

## Contact Information

- **Salt Lake City Department of Public Utilities - Storm Water Quality**  
1530 South West Temple, Salt Lake City 84115  
Phone: 801-483-6900  
Emergency: 801-483-6700  
Website: [www.SLCH2O.com](http://www.SLCH2O.com)
- **Salt Lake City POTW**  
Phone: 801-799-4000  
Email: [slcpretreatment@slcgov.com](mailto:slcpretreatment@slcgov.com)
- **Division of Environmental Response & Remediation**  
195 North 1950 West, Salt Lake City 84116  
Phone: 801-536-4100  
Emergency: 801-536-4123
- **Salt Lake County Health Department Bureau of Water Quality and Hazardous Waste**  
Phone: 385-468-3862  
Emergency: 801-580-6681  
Web: [www.slcohealth.org](http://www.slcohealth.org)
- **Salt Lake County Storm Water Coalition**  
Web: <https://stormwatercoalition.org/>



## Restaurant Site Checklist of Pollution Prevention Practices

### Storm Drains:

- Mark storm drains
- Clean drains as necessary to remove debris

### Grease and Oil:

#### Outside used cooking oil and grease containers

- Label with contents and hauler information; place away from storm drainage
- Place containers away from dumpsters to avoid accidental tipping
- Ensure that employees, regardless of size, can easily pour into containers
- Clean outside of containers and grate openings routinely.
- Keep container lids tightly closed.
- Provide labeled spill kit for employees & train them to use it.

#### Containers for transporting used cooking oil and grease

- Size appropriately for transporting to outside container.
- Use lids to avoid splashing between kitchen and outside container.
- Make sure container handles are secure.

### Mop Sink/Can Wash:

- Keep free from clutter and accessible to employees of all sizes who may need to lift and pour from heavy buckets (avoid having to lift above the waist to pour).
- Identify wash water disposal area through training or signage.

### Mats:

- Establish mop sink/can wash with drain going to sanitary sewer for mat washing;
- OR contain wash water & dispose of it in sanitary sewer;
- OR wash offsite at car wash or through contract services.

### Dumpster & Recycling Bins:

- Locate away from drainage to storm drain.
- Keep lids and doors closed.
- Keep drain plug tightly closed.
- Label with leasing company information (repair information).

### Grease exhaust fans on roof:

- Give contractor a copy of the Town's Pollution Prevention Notice contained in this guide. All wash water MUST be contained and emptied into a sanitary sewer drain with a grease trap.

### Outside Storage & Loading:

- Immediately & properly dispose of bulky waste
- Sweep to keep litter free.

## Guide to Water Pollution Prevention

### For Food Service Establishments



*In restaurant work, food safety is the highest priority, both for public health and for an excellent customer base. Given that priority and fast-paced work schedules, we have often neglected the conditions outside a restaurant's back door that affect the health of both our environment and people. Storm drains lead directly to creeks. What surrounds and washes into storm drains – or is poured down them- enters local waterways, untreated.*



**Salt Lake City**  
**Department of Public Utilities Storm Water**  
1530 South West Temple Salt Lake City, UT 84115

Telephone: 801-483-6900

Emergency: 801-483-6700

Website: [www.SLCH2O.com](http://www.SLCH2O.com)

## Cleaner Water is the Goal

Water pollution in our country comes mostly from storm water runoff. The mix of rain or snow melt with fertilizer, sediment, bacteria, vehicle fluids and dusts, detergents, grease, chemicals, litter, and other pollutants that accumulate and wash off the ground and impervious surfaces such as parking lots and streets. Direct dumping down storm drains is also a problem.

### **Dumping wash water, grease, or trash on the ground or into storm drains may lead to the following problems:**

- Fines and penalties for businesses, individuals, and the town for illicit discharges into storm drains or creeks.
- Property damage from flooding caused by blocked pipes.
- Foul-smelling standing water and waste in the restaurant's storm drain system.
- Attraction of rodents and pests to grease and food in and around storm drains.
- Reduced oxygen altered water chemistry and toxicity that harms life in local creeks.
- Illness in pets and people playing in polluted creeks.



Do not hose mats or garbage cans outside

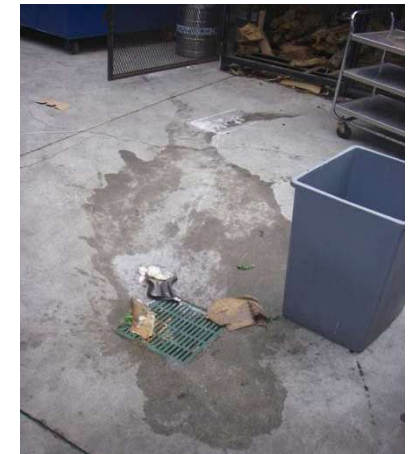


### **Building Maintenance**

- Never allow wash water, sweepings, or sediment to enter the storm drain.
- Sweep up dry spills and use cat litter, towels, or similar materials to absorb wet spills. Dispose of it in the trash.
- If you wash your building, sidewalk, or parking lot, you **must** contain the water. Use a shop vac to collect the water and contact your city or sanitation agency for proper disposal information. Do not let water enter the street, gutter, or storm drain.
- Use drop cloths underneath outdoor painting, scraping, and sandblasting work, and properly dispose of materials in the trash.
- Use a ground cloth or oversized tub for mixing paint and cleaning tools.
- Use a damp mop or broom to clean floors.
- Cover dumpsters to keep insects, animals, rainwater, and sand from entering. Keep the area around the dumpster clear of trash and debris. Do not overfill the dumpster.
- Call your trash hauler to replace leaking dumpsters.
- Do not dump any toxic substance or liquid waste on the pavement, the ground, or near a storm drain. Even materials that seem harmless such as latex paint or biodegradable cleaners can damage the environment.
- Store materials indoors or under cover and away from storm drains.
- Use a construction and demolition recycling company to recycle lumber, paper, cardboard, metals, masonry, carpet, plastic, pipes, drywall, rocks, dirt, and green waste. Familiarize employees with Material Safety Data Sheets.

## For The Manager

- Health inspections and local government regulations require proper disposal of wash water, oil, grease, garbage, and bulky items.
- Check storm drains and clean outdoor areas on a routine basis. Storm drain maintenance on private property is the responsibility of the property owner or tenant.
- Create employee incentives to keep outdoor areas clean and to properly dispose of wastes.
- Look for these signs at your restaurant every day. Note which shift may be responsible for improper disposal of wash water and retrain with videos and this guide.
- Train employees to place bagged garbage inside dumpsters, and to close lids and doors.
- Think about why employees are improperly disposing of wash water. Are your mop sinks blocked or too high? Are full buckets too heavy for employees to lift and pour into mop sinks? Did training cover proper disposal?



Employees were trained to dump mop wash water into the storm drain. Vegetable litter from cold storage was also rinsed into it. Flies, mosquitoes, roaches, rats, and horrid odors resulted. Nitrogen from decaying organics, soap, grease, and chemicals were released to local streams.

- ***If you have questions about disposal, drain cleaning or collections, contact any of the resources listed on the reverse page.***