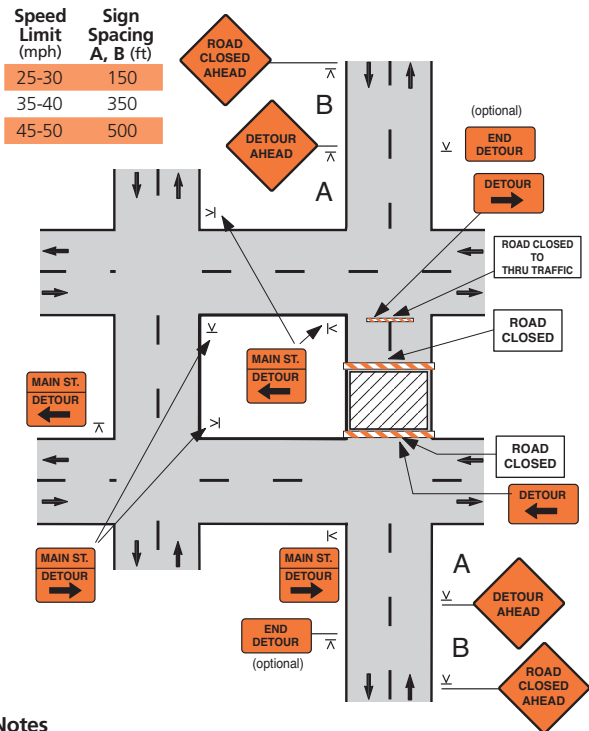


Street Closure with Detour



Notes

1. This layout is appropriate for city streets and township roads. See MUTCD Part VI for closing and detouring a numbered highway.
2. When a side road intersects the roadway within the work zone, place Type III barricades and ROAD CLOSED signs at the intersections, and provide advance signing of the closure on the side road approaches.
3. Using a street name sign with the DETOUR sign is optional. If used, the street nameplate goes above the DETOUR sign.
4. DETOUR sign with an advance turn arrow may be used in advance of a turn. On multilane streets, such signs should be used.
5. DETOUR signs may be located on the far side of the intersections.