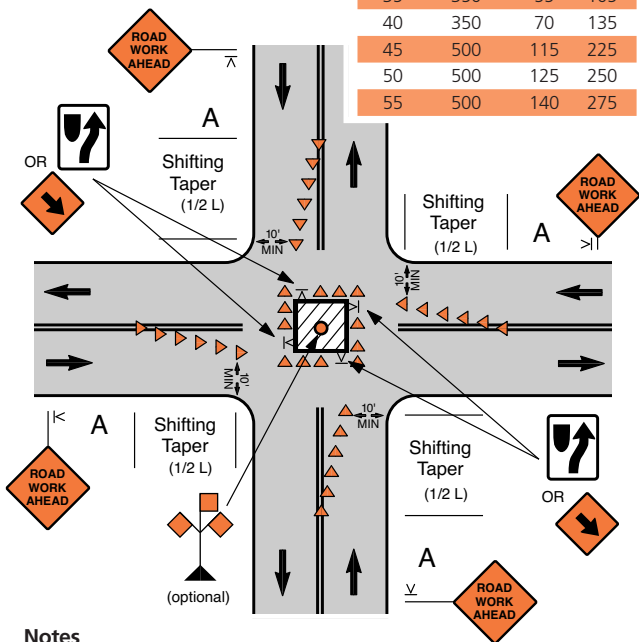


## Closure in the Center of an Intersection

Speed Limit (mph)	Sign Spacing A, B (ft)	Shift Taper (ft)	
		5' shift	10' shift
25	150	30	55
30	150	40	75
35	350	55	105
40	350	70	135
45	500	115	225
50	500	125	250
55	500	140	275



### Notes

1. Additional advance warning may be appropriate such as ROAD NARROWS or REVERSE CURVE/TURN signs. The REVERSE CURVE/TURN sign is appropriate for larger deviations in the travel path.
2. Prohibit left turns as required by traffic conditions. Unless the streets are wide, it may be physically impossible to turn left, especially for large vehicles.
3. A minimum of five channelizing devices shall be used for each taper.
4. For short duration work (60 minutes or less), the channelizing devices may be eliminated if a flashing or revolving yellow light is displayed in the work space.