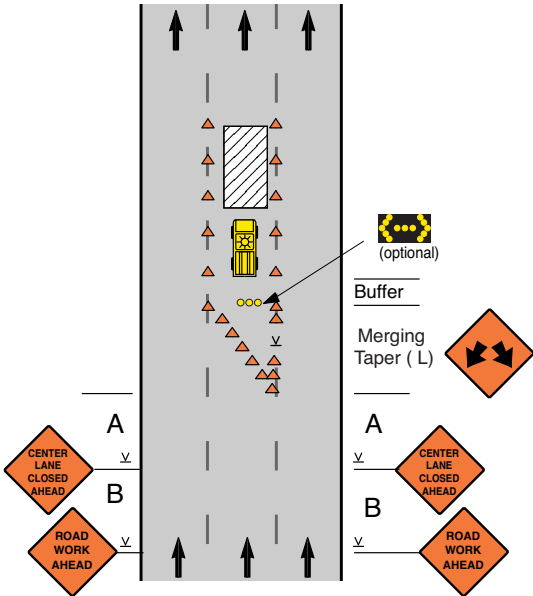


## Center Lane Closure on Divided Multi-Lane Roadway (Speeds of 35 mph or Less)



### Notes

- The merging taper may direct traffic into either the right or left lane but not both. Consider turning volumes and bus stop locations to determine the direction for the merging taper.
- When an arrow display is used, it may be placed in the closed lane near the end of the merging taper, or it may be on a vehicle in the work area.
- If an arrow display is not used, a LARGE DOUBLE ARROW sign may be used to provide added guidance.

Speed Limit (mph)	Sign Spacing (ft)		Merging Taper (ft) for 12' lane	Buffer (ft)
	A	B		
25	150	200	125	55
30	150	200	180	85
35	350	350	245	120