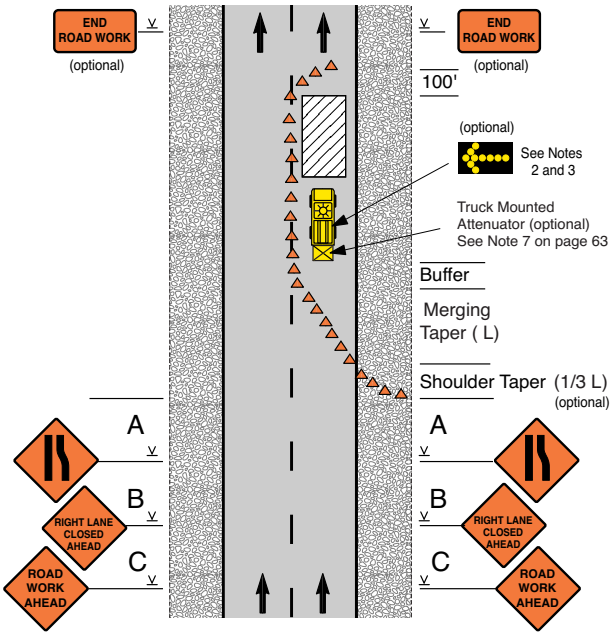


Lane Closure on Divided Roadway



Notes

- When a side road intersects the roadway within the work zone, additional devices shall be erected to channelize traffic to or from the side road, and a ROAD WORK AHEAD sign shall be placed on each side road approach.
- An arrow display is optional based on traffic volume, speed, and visibility. Generally, it is a good practice where speeds are 35 MPH or greater. When used, it may be placed near the beginning of the taper or on a vehicle in the work area.
- If an arrow display is not used, a LARGE ARROW sign may be used to provide added guidance.

Speed Limit (mph)	Sign Spacing (ft)			Merging Taper (ft) for 12' lane	Buffer (ft)
	A	B	C		
30	150	200	200	180	85
35	350	350	350	245	120
40	350	350	350	320	170
45	500	500	500	540	220
50	1000	1600	2600	600	280
55	1000	1600	2600	660	335
60	1000	1600	2600	720	415
65	1000	1600	2600	780	485