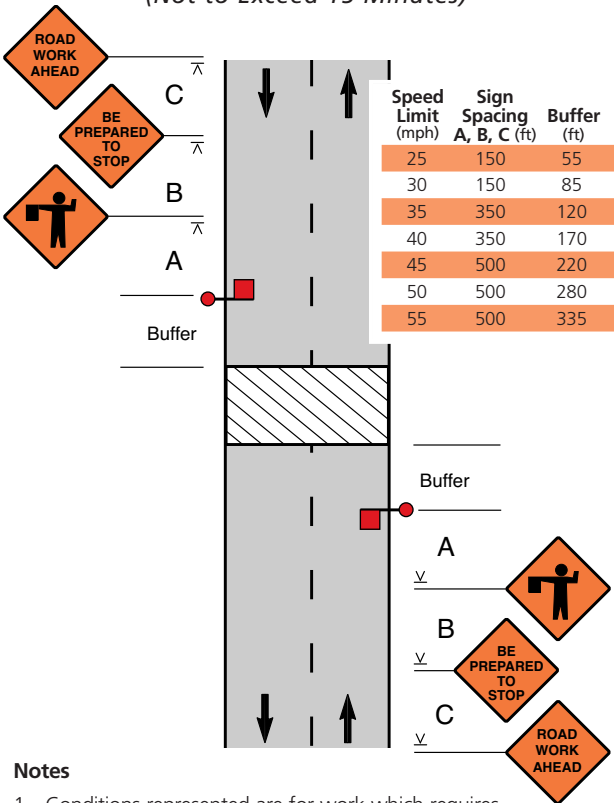


Temporary Road Closure (Not to Exceed 15 Minutes)



Notes

1. Conditions represented are for work which requires closings during daytime hours only.
2. This application is intended for a planned temporary closing not to exceed 15 minutes.
3. For high volume roads, a police patrol car or a changeable message sign or both may be added.
4. The flagger shall stop the first vehicle from the shoulder as shown. After stopping the first vehicle if the view of the flagger is obstructed, then he or she should move to the centerline to stop additional traffic.
5. Flaggers shall use approved flagging procedures according to the MUTCD and as shown on page 23.