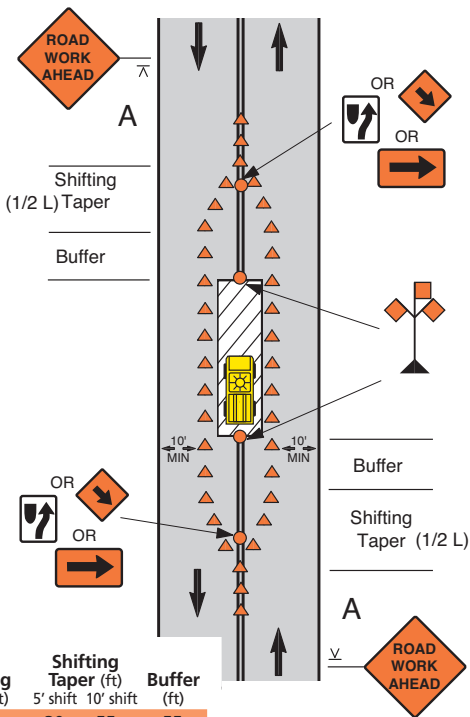


Work in Center of Road

(Maintaining Two-Way Traffic, 35 MPH or Less)



| Speed Limit (mph) | Sign Spacing A, B (ft) | Shifting Taper (ft) | | Buffer (ft) |
|-------------------|------------------------|---------------------|-----------|-------------|
| | | 5' shift | 10' shift | |
| 25 | 150 | 30 | 55 | 55 |
| 30 | 150 | 40 | 75 | 85 |
| 35 | 350 | 55 | 105 | 120 |

Notes

1. Additional advance warning may be appropriate such as ROAD NARROWS or REVERSE CURVE/TURN signs. The REVERSE CURVE/TURN sign is appropriate for larger deviations in the travel path.
2. Channelizing devices may be eliminated on low volume roads if the work vehicle displays a flashing or revolving yellow light.
3. The LARGE ARROW SIGN may be used instead of the KEEP RIGHT or DOWN ARROW sign where space permits.