

200 SOUTH INDEFINITE CLOSURE

PRESENTED BY



DEPARTMENT *of*
**COMMUNITY &
NEIGHBORHOODS**



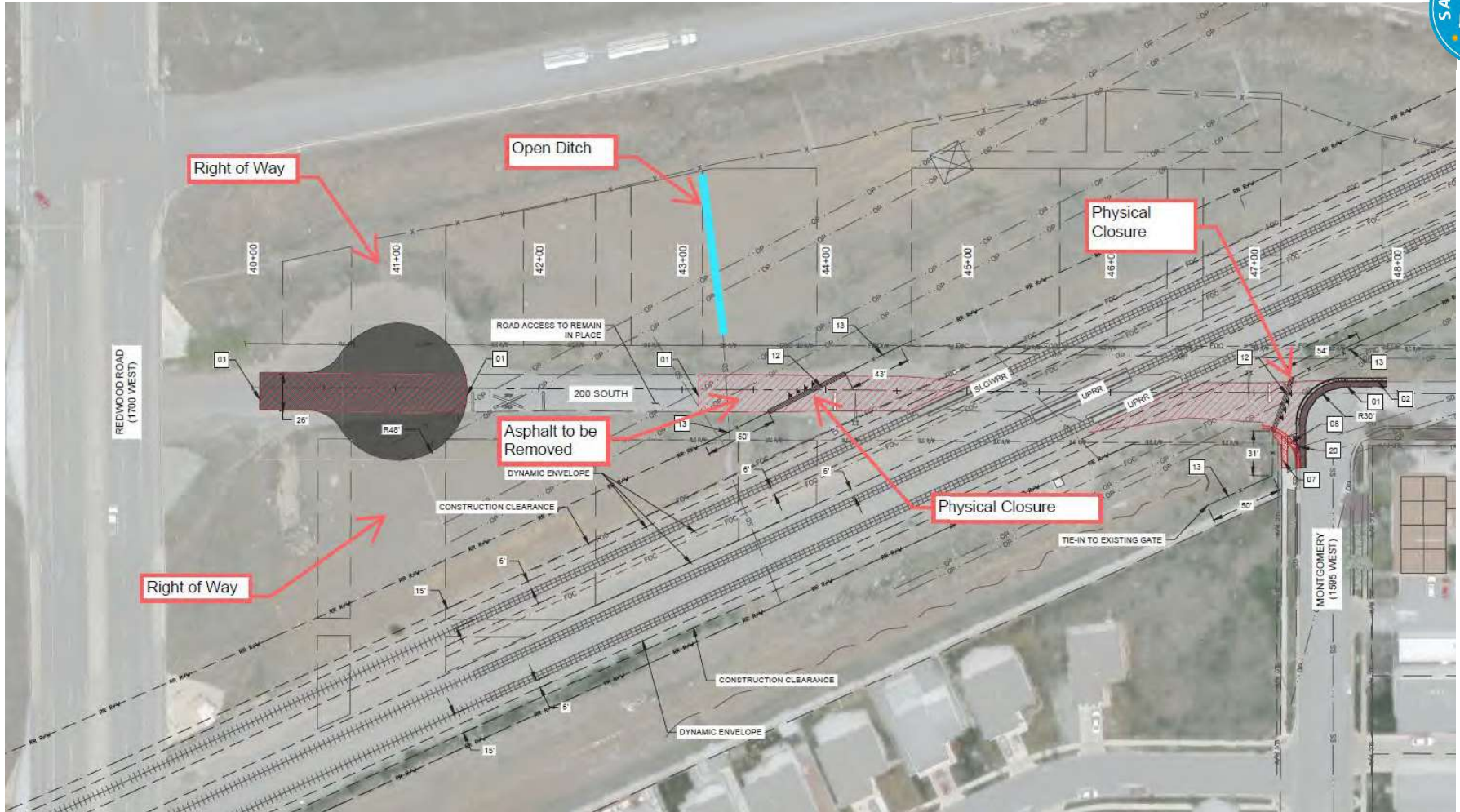
Purpose

- 200 South Indefinite Closure
- Westside Railroad Quiet Zone Project

Reasons for Proposed Closure

- Crossing Skew
- Rail Elevations

PROPOSED CLOSURE DESIGN



POTENTIAL CLOSURE IMPACTS



- ### Impacts
- Residential Properties
 - Industrial Properties
 - Utilities