

# Riparian Corridor Implementation Plan

## SALT LAKE DEPARTMENT OF PUBLIC UTILITIES

Public Workshop No. 1

February 28 and 29, 2012

6:00-8:00 P.M.



Anderson-Foothill Library  
1135 South 2100 East

Day-Riverside Branch Library  
1575 West 1000 North

Salt Lake City, Utah



Welcome to the Salt Lake City Riparian Corridor Implementation Plan Public Workshop. We are glad you could attend and look forward to receiving your input on this important effort. This is the first of two rounds of public workshops that will be held during this process.

Between 2008 and 2010, riparian Corridor Studies and Management Plans were prepared for the Salt Lake City segments of City, Red Butte, Emigration, and Parleys Creeks. Plans for each creek include a list of recommended riparian improvement measures summarized by stream reach. Salt Lake City is now in the process of integrating these recommendations into a prioritized implementation plan and developing a process to accept, review, rank, and approve or deny newly proposed projects. The implementation plan will also rank and prioritize several riparian improvement projects on the Jordan River that were previously identified through separate planning processes.

The City is also working on designs for educational creek-crossing signs and “leaving public land” signs. The goal of the creek crossing signs is to increase public awareness and geographic knowledge of the creeks within the City by informing motorists and pedestrians

that they are crossing a creek. The City plans to install signs on Red Butte, City, Parley’s, and Emigration Creeks this summer. The City’s Parks and Public Lands Division is also working on plans for future installation of signs along the Jordan River.

This workshop is designed to facilitate your input, which will guide the design of creek-crossing signs and the development of plans and priorities for implementing riparian corridor improvement projects. At this workshop, we will make an approximately 30-minute-long presentation. You will find informational maps identifying creek locations and major road crossings, along with posters of the sign graphics from the presentation, set up around the room. Following the presentation, you will be given the opportunity to ask questions and provide us with your comments and suggestions.

Please listen carefully to the presentation and take the time to familiarize yourself with the information included in this handout. Most importantly, let us know what suggestions you have for the creek-crossing signs, implementation plan, and prioritization process by filling out the Workshop Response Form included in this handout. If you have any questions, do not hesitate to ask members of the Project Team; they are here to listen to and answer your questions. Thanks again for participating!

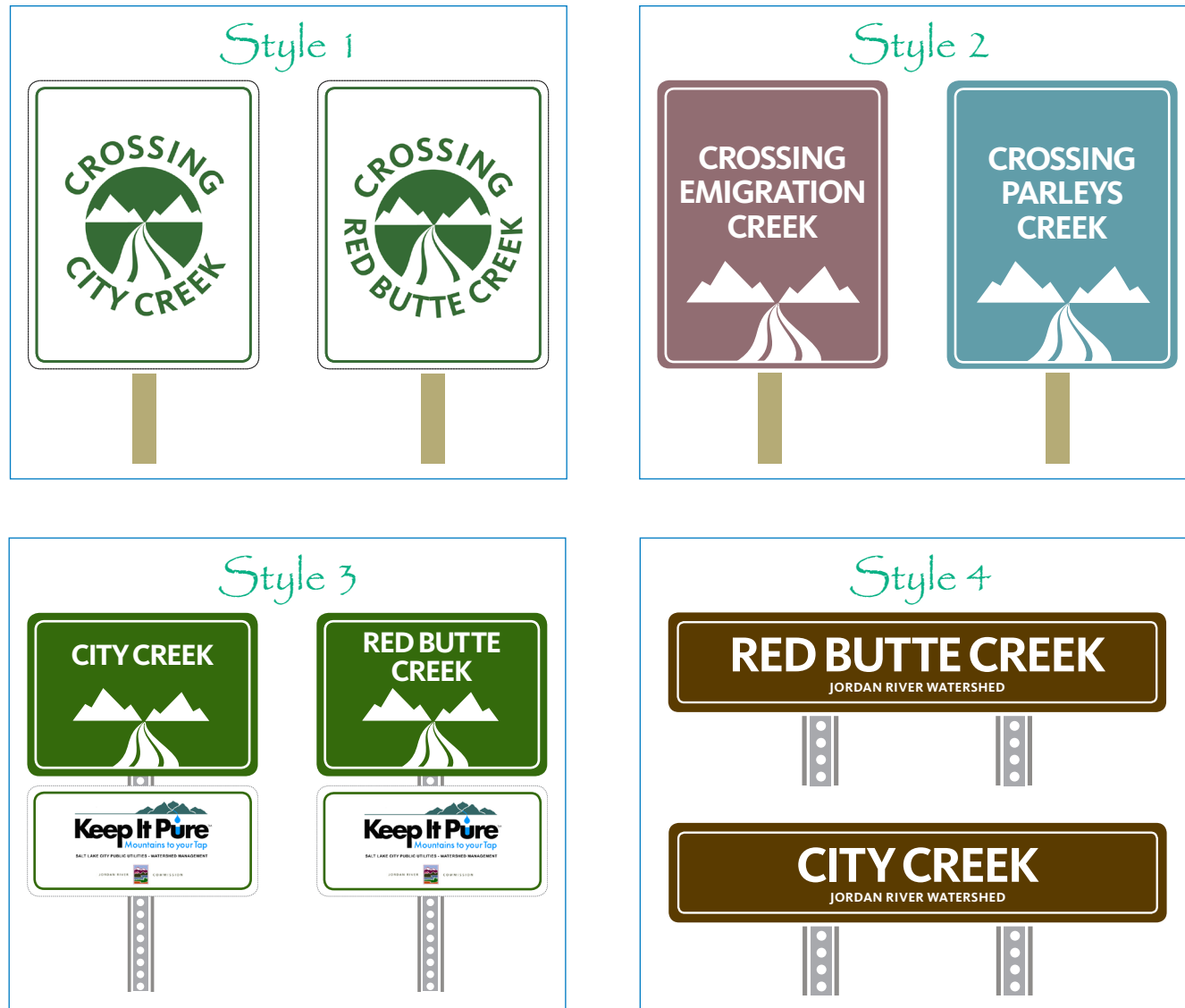


Figure 2. Options for creek signage (Style 1) logo with single wood post, (Style 2) logo with single wood post and color varied by creek, (Style 3) logo with single metal post and two stacked signs, (Style 4) no logo, horizontal format, double metal post on watershed-identifying sign.



For more information visit the City’s website. ([www.slch20.com](http://www.slch20.com))



### Project Schedule

The project began in November 2011 and is scheduled for completion in May 2012. A second round of public workshops where you can provide input will be held at the end of March. Dates and locations for the March workshops are as follows:

**Wednesday, March 28, 2012**  
**6–8 p.m.**  
**Main Library, Conference Room B**  
**210 East 400 South**

**Thursday, March 29, 2012**  
**6–8 p.m.**  
**Day-Riverside Branch Library**  
**1575 West 1000 North**

### What is a Riparian Area?

- A riparian area is the zone of influence between aquatic and upland areas.
- A riparian area includes the stream channel, floodplain, and transition zone.
- Riparian areas are rare and provide many important community benefits.
- The City’s Riparian Corridor Overlay Zone Ordinance applies to the area within 100 feet of the annual high water line of above-ground streams.
- A “riparian corridor” is the stream plus the 100-foot riparian corridor on each side.

### What Types of Benefits do Healthy Riparian Corridors Provide?

- scenic/aesthetic
- recreation

- floodplain storage and flood-damage reduction
- water quality
- streambank stability
- ecological/habitat

### What Types of Riparian Corridor Improvement Projects Have Been Proposed?

- stream cleanup and mechanized trash removal
- invasive plant removal/control
- native understory, shrub, and canopy cover revegetation
- storm drain improvement/runoff management
- grade control and biotechnical streambank stabilization
- access control/trail stabilization
- fill removal/floodplain reestablishment
- culvert replacement

### What Preliminary Types of Prioritization Criteria Have Been Identified?

- location and size criteria
- project benefits
- cost considerations
- project need/urgency
- stakeholder support
- other factors (safety or educational benefits, use of scientific monitoring, etc.)

### Review Process for Newly-Proposed Projects

A flow chart illustrating the draft review process is shown in Figure 1.



### Creek Crossing Signs

Some draft designs illustrating options for sign content and style are shown in Figure 2. The draft designs explore options for such things as sign post types (e.g wood vs. metal), use of logos, background colors, sign orientation, identification of watershed information, and inclusion of additional information. Please fill out a comment form to help us learn more about your preferences for sign designs and locations.

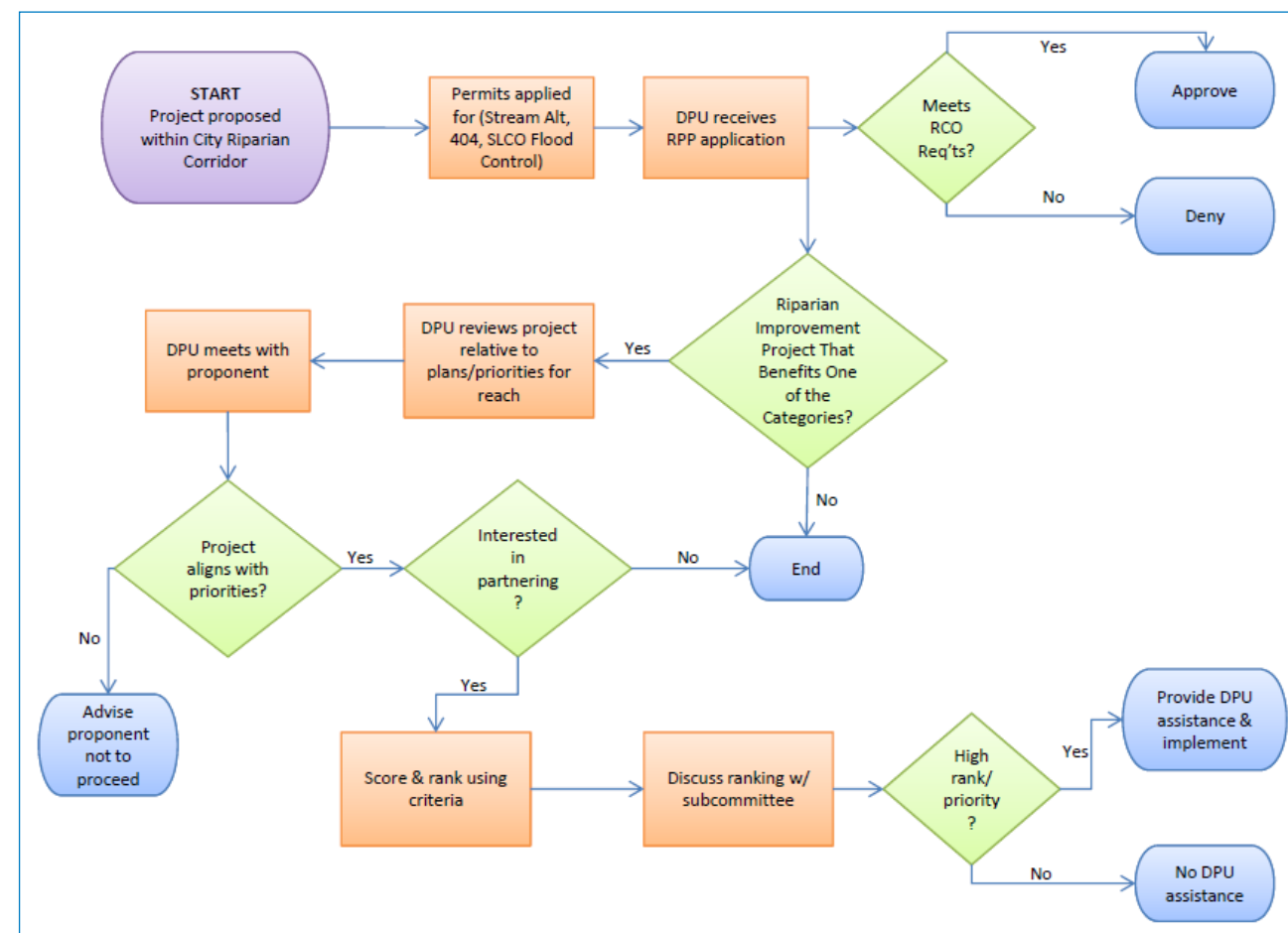


Figure 1. Draft review process for newly proposed riparian projects.

