

# City Creek Canyon



Proposed Shaded Fuel Break

Project Update: September 17, 2009

# Open House Schedule

- ▶ Presentation 15 min.
- ▶ Panel Questions & Answers 20 – 30 min.
- ▶ Dispersed Q & A until 8:00 PM
- ▶ Comment Forms 6PM – 9PM

# Background:

## Goals of Proposed Plan

1. Enhance safety and reduce risk to public, emergency responders, and water treatment plant staff in City Creek Canyon
2. Mitigate origination of wildfire from road to protect watershed

**Recommendation from Forest Service, County, and State Wildland Fire: Shaded Fuel Break**



# Background: What is a Shaded Fuel Break?



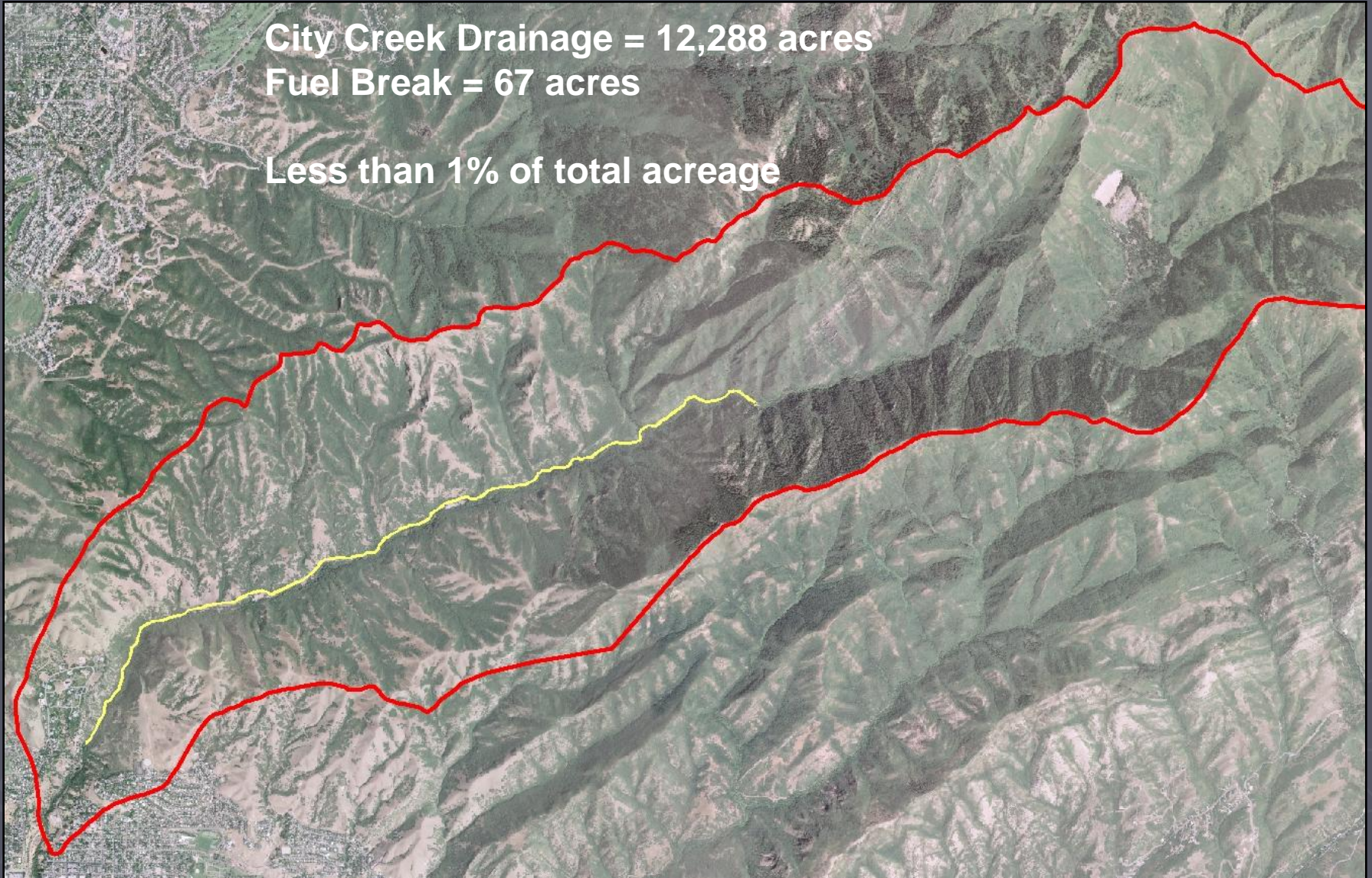
- Shaded break 100 ft North side of road from Gate House to Area 30 Rotary Park (5.5 miles)
- Riparian habitat South of road not disturbed
- Trees limbed from ground up to 15-20 feet high
- Most large trees will remain
- Dead/dying and smaller trees removed
- Bridge and "ladder" fuels eliminated
- Wood will be chipped or removed, depending on microhabitat
- 4-6 weeks to completion
- Best time to cut is spring or fall
- Shaded canopy maintains riparian quality, keeping fuel moisture levels up

# Background: City Creek Fuel Break Acreage

City Creek Drainage = 12,288 acres

Fuel Break = 67 acres

Less than 1% of total acreage



Red line = watershed boundary    Yellow = Shaded fuel break

# After the April 2009 Proposal...

- ▶ Request for more public participation
- ▶ Request to slow down for more review
- ▶ Request for specific environmental review
  - Impact on avian populations
  - Impact on native plant communities
  - Impact to public recreational experience

# In Response...

- ▶ Citizen's Review Committee Formed
- ▶ Field trips, meetings & discussions Summer 2009
- ▶ Joint recommendations for public review before any further actions/proposals to take place
- ▶ Comments Requested! We want your input!

# Citizen's Review Committee

- ▶ Pat Shea- Past Director, Bureau of Land Management
- ▶ Kirk Robinson- Western Wildlife Conservancy
- ▶ William Gray – Utah Native Plant Society
- ▶ Polly Hart – Capitol Hill Community Council
- ▶ Wayne Green – Past Director, Greater Avenues Community Council
- ▶ Carlton Christensen –
- ▶ Russell Norvell - Utah Division of Wildlife Resources, Partners in Flight Coordinator
- ▶ Ty Harrison – Professor Emeritus of Ecology Westminster College
- ▶ Wayne Martinson – National Audubon Society
- ▶ Rudy Drobnick - Professor Emeritus of Plants University of Utah
- ▶ Scott Williams – Community Activist



# Agency Staff & Partners

- ▶ Eric Jergensen – Salt Lake City Council Member, District #3
- ▶ Duane Woolsey - UFA Wildland Fire
- ▶ Ben Bloodworth- Utah Div. of Forestry, Fire and State Lands
- ▶ Beth Corbin, Robert Sanders – US Forest Service
- ▶ Tom Ward – SLC Dept. Public Utilities Deputy Director
- ▶ Florence Reynolds – SLC Dept. Public Utilities
- ▶ Devin Villa - SLC Fire Department
- ▶ Lehua Weaver - SLC Council Staff
- ▶ Quin Card - SLC Council Staff
- ▶ Vanessa Welsh - SLC Watershed
- ▶ Patrick Nelson - SLC Watershed

# Recommendations of Citizen Review Committee

- ▶ Create three test plot locations
- ▶ Study impact of test plots:
  - wildlife & birds, vegetation/weeds, public/recreation
- ▶ Fund a baseline avian study on road corridor usage for Spring/Early Summer 2009
- ▶ Solicit public input and comments before moving ahead with any further step

# Bottom line...

- ▶ Proposed test plots and avian studies are just recommendations
- ▶ Please give us your input!

# Summary of Review Process



# April 29, 2009 Field Trip

- ▶ City Creek Canyon site visit to discuss the concept and examine concerns.



# June 5, 2009: Site Visit Follow Up

- ▶ Concept of test plots, decision to select a subgroup to identify possible test sites



# June 9, 2009: Site Selection Tour

- ▶ Three Test plot sites selected by both avian/native plant specialists and fire suppression professionals.

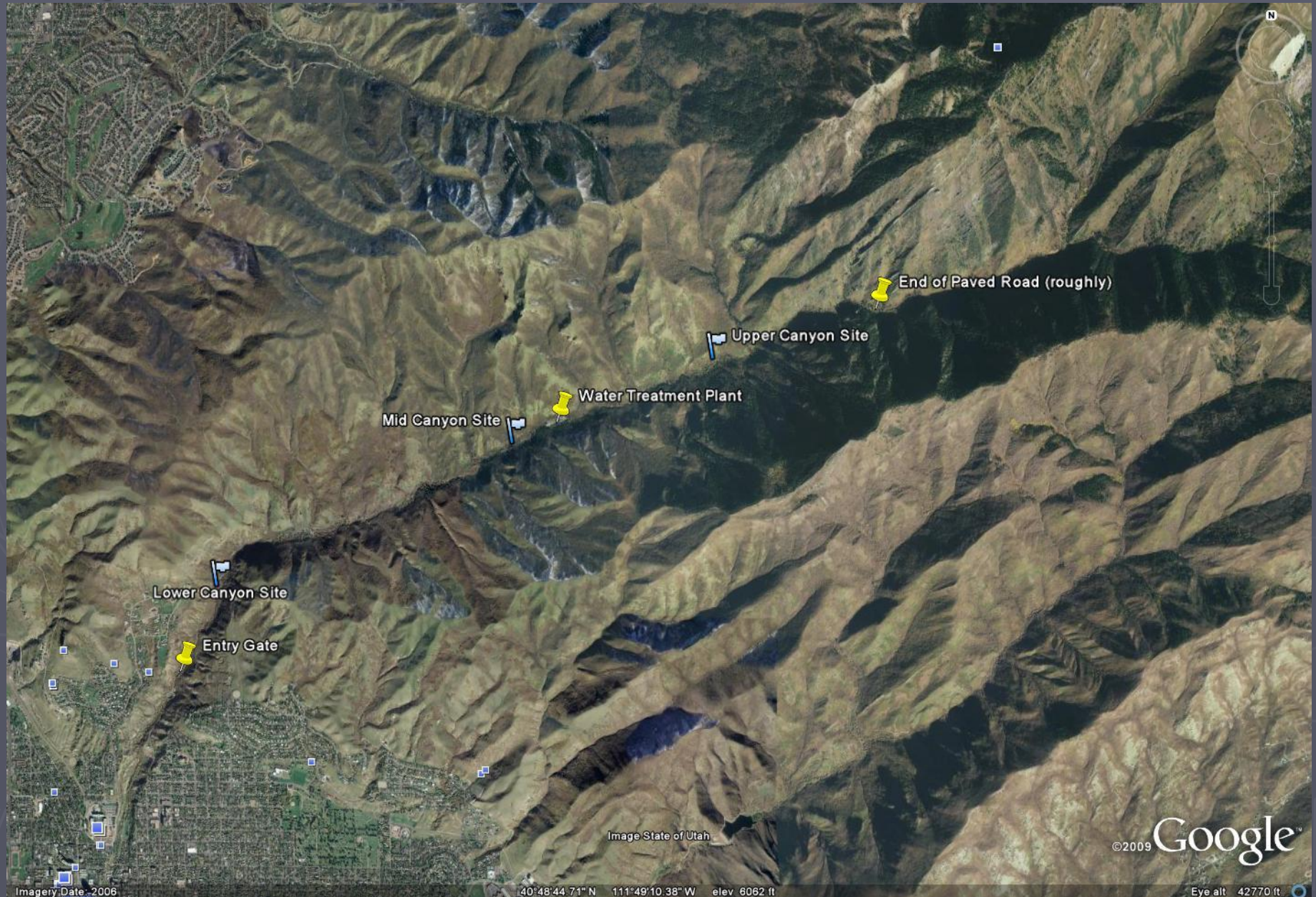


# Jun – Aug 2009: Baseline Studies

- ▶ Plant baseline studies by Ty Harrison and William Gray
- ▶ Bird baseline initial assessment by Russell Norvell, DWR
  - Recommended further studies
  - Submitted study proposal  
(study proposal part of recommendations)



# Map of Proposed Test Sites



# Test Plots: Details

- ▶ Proposed pending public comment
- ▶ Will be studied pre/post creation for impact
- ▶ Physically posted in City Creek Canyon (now)
- ▶ 500ft. Long

# What's Next?

- ▶ Public Comment Period
  - Open through October 15, 2009
  - Four weeks
- ▶ Citizen's Review Committee meeting  
To review results and finalize proposal

# Background Materials

- ▶ [www.slcgov.com/utilities/firesuppression.htm](http://www.slcgov.com/utilities/firesuppression.htm)
  - PowerPoint
    - ▶ April 2009 Open House
    - ▶ September 17, 2009 Update (tonight)
  - Google Earth test plot locations
  - Online Comment forms  
(available through October 15, 2009)

# Questions?

