



Construction of the City Creek Water Treatment Plant (CCWTP) Coagulation Building Demolition project is scheduled to start January 30, 2018 and is expected to continue through the end of May, 2018.

LOCATION

The CCWTP is a water treatment facility owned and operated by Salt Lake City Department of Public Utilities. It is located approximately 3.2 miles up-canyon from the City Creek Canyon gate and trailhead. Plant operators and construction crews access the plant year-round on the City Creek Canyon Road.

BACKGROUND AND NEED

During a routine inspection, engineers found structural deficiencies on the roof of the Coagulation Building, a sub-building within the plant. A report filed by the engineers detailed the possibility of a sudden collapse of the roof. The decision was made to demolish the roof and walls of the Coagulation Building immediately to protect workers' safety and the valuable water resource that the plant offers to downtown Salt Lake City.

HEAVY TRAFFIC AND ROAD CLOSURES

A majority of the work will take place on site at the CCWTP. There will be times when construction crews must mobilize equipment to and from the site. Dump trucks, equipment trailers, and work vehicles can be expected on City Creek Canyon Road throughout the duration of the project.

Public access and public safety must be balanced during the project. Every attempt will be made to keep the canyon open to the public throughout its duration. However, there may be times when it is too dangerous for the public to be in the canyon due to heavy equipment traffic. At least two full canyon closures are anticipated as a large crane is mobilized to and from the site. The crane is too wide to allow bikers and pedestrians to pass on the narrow road. All other construction equipment will attempt to access the road with the public present unless public safety is compromised. They will travel slowly, use flashers, and in some cases may have pilot vehicles.

Nearby residents, businesses, adjacent construction crews, and canyon recreators are asked to be aware of the increased construction traffic. Watch for heavy equipment in the canyon and travel slowly on the City Creek Canyon Road. This will protect personal property,

minimize impacts, and expedite work. The contractor will be asked to complete major construction and road restoration by the time City Creek Canyon Road opens to public vehicle traffic on Memorial Day.

SAFETY

Safety is a top priority for SLC Public Utilities. We encourage and appreciate everyone's participation to keep pedestrians, children, crew members, and vehicles away from the construction equipment and work areas. **Parents, please talk with your children about staying away from potentially dangerous construction and staging areas.** If you see any vandalism or trespassing in construction areas, please call the **Salt Lake City Dispatch: (801) 483-6700** to report the incident.

FREQUENTLY ASKED QUESTIONS

Q: *Will the public be notified prior to canyon closures?*

A: Yes. A 7 day minimum advanced notice will be given prior to any canyon closure. Follow Salt Lake City Department of Public Utilities on social media to watch for updates. An electronic sign will be posted at the base of the canyon to provide construction updates.

Q: *Will my water service be shut-off?*

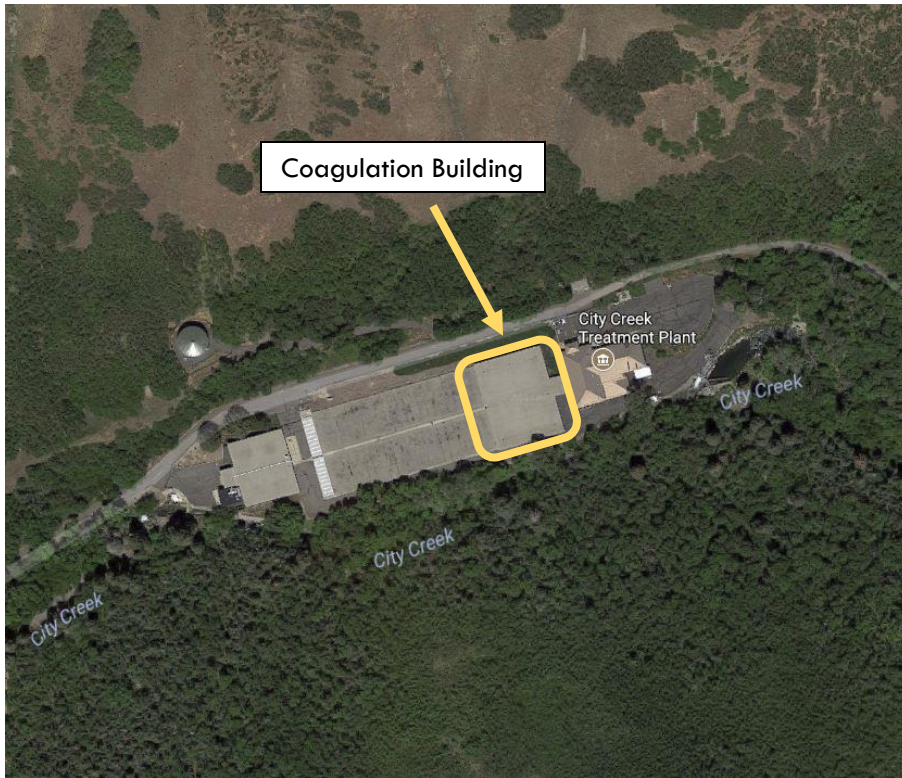
A: No. The project will be completed with the CCWTP on-line. Plant shutdowns are not anticipated, but if a shutdown is necessary, redundancies in the water distribution system will prevent any loss of service.

Q: *Will CCWTP be fully operational without walls and a roof on the Coagulation Building?*

A: Yes. This step in the water treatment process is not required to be covered. In fact, most water treatment plants do not have a covered building for this stage in the process.



City Creek Water Treatment Plant Area Map



Anticipated Schedule:

Begin Construction: January 30, 2018
Crane Delivered: Late February, 2018
Demolition: March 2018
Remove Equipment: May 2018

CONTACT INFORMATION:

Salt Lake City Department of Public Utilities

Project Manager:

Blayde McIntire, 801-483-6783
Email: Blayde.McIntire@slcgov.com

Construction Inspector:

Blaine Raby, 801-483-6886
Email: Blaine.Raby@slcgov.com

Administrator

Jason Brown, 801-483-6888
Email: Jason.Brown@slcgov.com

Contractor: Alder Construction

Val Martin
801-266-8856 Ext. 214
Email: VMartin@alderconstruction.com

Consultant: Carollo Engineers

Karina Payne
801-233-2518
Email: KPayne@carollo.com