



This update of the **Capitol Hills Pump Station** project provides design and construction update information based upon the final design review meeting at the 500 North Cortez pump station site on Saturday, November 1st and work since then to address neighbor concerns. See the October 30th project FAQ flyer for additional information reviewed at the field meeting. The project team will be at the November 19th Capitol Hills Community Council to share information, answer questions, and get more feedback.

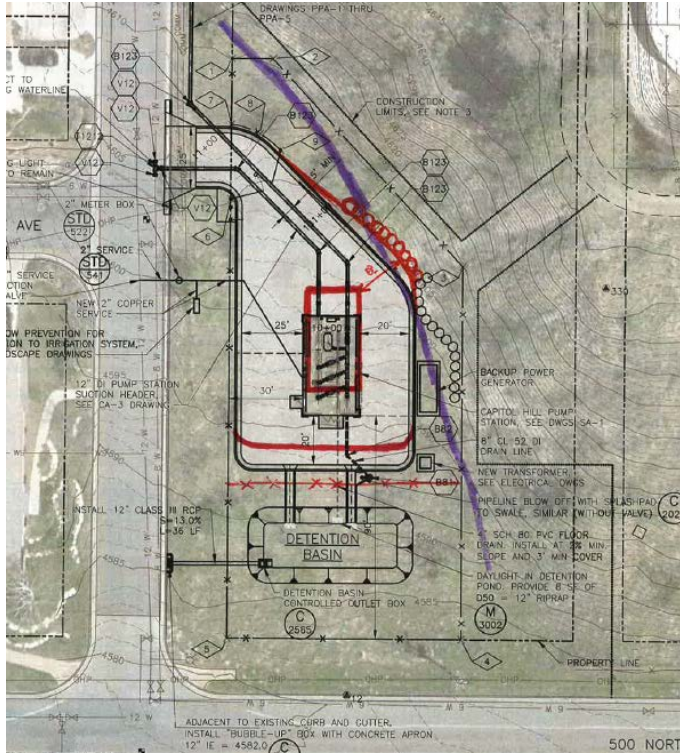
Based upon review and input from the neighboring community, the following changes are being incorporated into the project. Additional information regarding each item is provided further below.

- The pump station will be moved 10 feet north of the original design location.
- The general preference of the community is to maintain traditional pitched roof design.
- Include faux windows in west wall elevation.
- Increase noise attenuation above that required by code.
- Provide possible alternate exterior masonry finishes.

Below is a list of changes already implemented based upon previous community input:

- Include improved open space landscaping consistent with the Capitol Hills Master Plan.
- Include park benches at locations to enjoy views of the sunrise, sunset and the Capitol.
- Include more features to blend the pump station into the area.
- Upgrade site fence to wrought iron.
- Reduce size of fence enclosure to maximize area accessible to public at southwest corner.





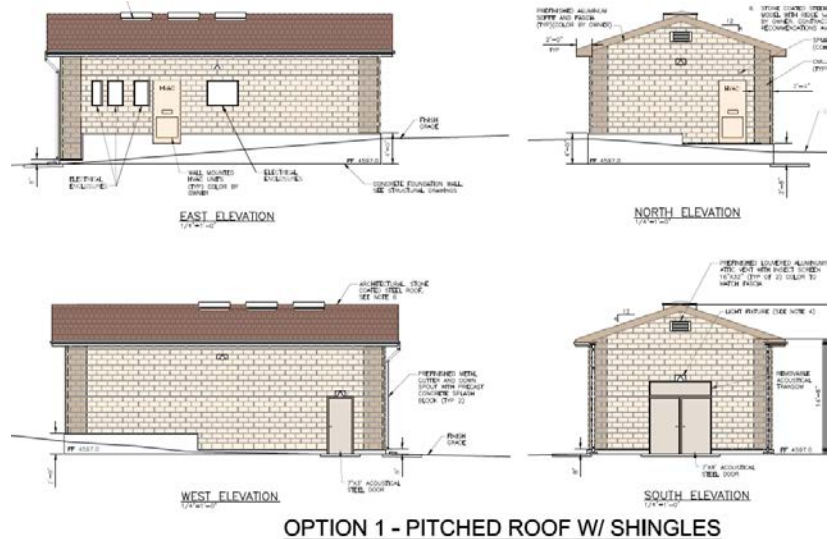
The Pump Station will move 10 feet north

The neighbors requested and the City has confirmed the pump station can be moved 10 feet north to increase the amount of improved open space area accessible to the public at the southwest corner of the site (500 North and Cortez). While moving it north reduces the visual impact of the pump station, it will move up the slope about 1 foot, and the generator is less shielded by the building to the west. The neighbors immediately in the vicinity of the pump station site supported this change.

This change will require an additional 40 feet of non-structural rock retaining, similar to the neighbors rock retaining features. The engineers reviewed the possibility of moving it further east, but concluded any further north or east would compromise the steep slope and water storage tanks.

Architectural Design

After review of several architectural roof line and elevations, the participating neighbor consensus was to keep the traditional ridged roof line from the original design. The generator, electrical panels and air conditioner will remain on the east side of the building to hide from view.

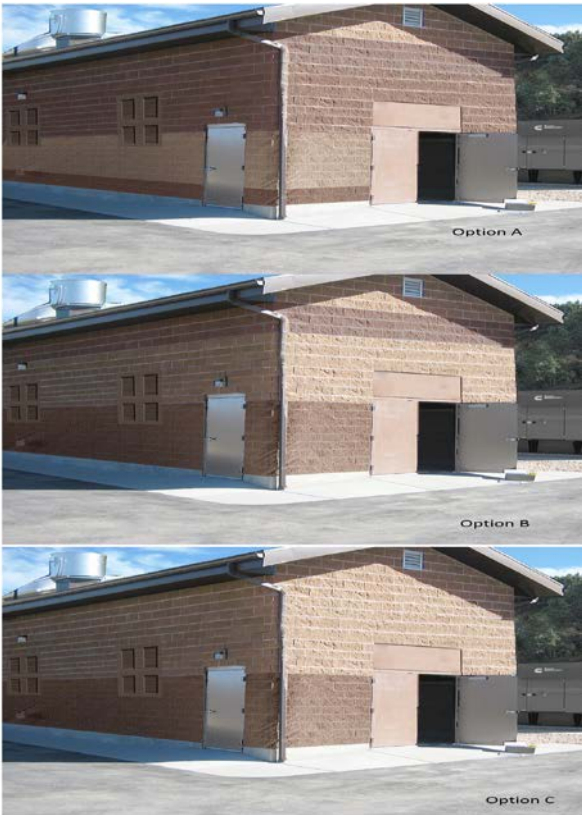


OPTION 1 - PITCHED ROOF W/ SHINGLES



Windows, Colors and Masonry

Several neighbors asked if the City would consider alternate masonry materials and faux windows. The design will now include faux windows similar to the pump station photo to the left. Several samples of masonry colors were reviewed at the November 1st meeting. The general color scheme consensus was for the brown earth tones.



The neighbors requested consideration of alternate masonry or brick design schemes, including horizontal color bands rather than vertical/corner color changes shown on the original architect renderings (previous page). It is still recommend keeping the corner column blocks per the original rendering for depth contrast, but the corner colors will be the same as the adjacent wall.

The City will give the neighbors an opportunity for input into final masonry color selections with sample materials that will be provided at a future project meeting that will be coordinated with the Capitol Hills Community Council.

Additional Noise Control Measures

The pump station is designed to dampen noise from the pumps and is required to include noise abatement that meets the Salt Lake Valley Health requirements for residential neighborhoods (equivalent of a “quiet street”). The City is including additional sound mitigation above that required by the noise ordinance.

An emergency backup power generator is required but only needs to run in the infrequent event of a power outage to provide water to the neighborhood, and for scheduled exercising during the day. City staff will coordinate with neighbors to set a time and day of the week to exercise the generator when most people are not home, and to blend with traffic and other background noises.

Schedule

The pump station has been delayed from an October start in order to obtain additional public feedback into the final design location and amenities of the pump station. One resident filed an action in Third District Court to obtain a temporary restraining order to stop the project. On November 7th, the Court heard arguments and ruled that the City could continue with the project. The foundation and grading is anticipated to begin in late November to meet completion scheduled for May 2015.

An important schedule milestone is to complete the site and be ready for landscaping in early spring so that the dozens of new plantings are able to establish and survive the summer months. If landscaping is delayed to summer, then the site may have to wait until fall for landscaping when the plants can survive. The Contractor is scheduled to be complete in late spring so that the site is finished and all construction activity and impacts are done by that time. This also meets the primary project milestone to have the pump station and pipeline operational for the high water demand summer season which begins in late June.



Ongoing Public Outreach

Project representatives from the City will attend the November 19th Capitol Hill Community Council meeting to answer questions, get input, share progress, decisions, and the project schedule. The City, Contractor and Engineer will provide regular updates on project progress and schedule to the immediate neighbors and post on the project web page at www.slcgov.com/utilities.

If you have questions, wish to attend future project meetings, or to provide input to the project, please contact the City's project manager, Jason Brown at 801-483-6888 or jason.brown@slcgov.com.

Contractor Public Involvement Coordinator
Steve Idle (801) 960-5849, Vancon Construction

City Project Manager: Jason Brown, P.E.
(801) 483-6888 Jason.brown@slcgov.com

City Inspector: Brett Schuurman
(801)381-8990 brett.schuurman@slcgov.com

***For water or flooding emergencies:
Call 801-483-6700***