

## Tips to Identify a lead service line in your home

- **Age of service is a good indicator**
  - 1986 or newer (Should not have lead- Lead was banned in June, 1986)
  - 1960's to 1986 (most likely not lead)
  - 1930 to 1959 (possibly lead but lead was being phased out by 1930's)
  - 1929 or older (More likely to be lead)
- **Service line size**
  - Most frequent lead service lines are 1 inch or less
  - Almost all lead services are 2 inches or less
  - Very rarely lead service lines are 3 inches or larger

### Types of pipe your service line may be made of:

#### Lead



A dull, silver-gray color that is easily scratched with a coin. Use a magnet - strong magnets will *not* cling to lead pipes.

#### Galvanized



A dull, silver-gray color. Use a magnet - strong magnets will typically cling to galvanized pipes.

#### Copper



The color of a copper penny.

#### Plastic



White, rigid pipe that is joined to water supply piping with a clamp.

**Tools for Identificaion:** Flashlight, Magnet, Screwdriver or coin to scratch pipe if necessary.

**Step 1:** Find your main service line. This is typically where your main shutoff is and is inline with your water meter outside.

**Step 2:** Visually inspect pipe. Scratch pipe and test with a magnet to see if it sticks.

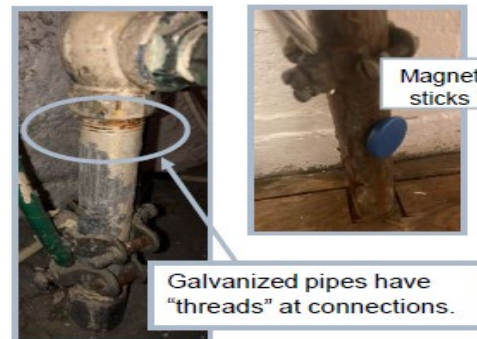
**Step 3:** Identify pipe from the matrix below. Please notify our office if you think you have a lead service line or fill out our survey at (insert link) and upload a picture to help us identify or confirm your service line material for you.

	Lead	Galvanized Iron	Copper	Plastic
<b>Outer Appearance</b>	Dull gray, bendable; Often curves between wall/floor and valve	Dark gray or black; Straight rigid pipe	Brown; Can have green corrosion spots	Rigid plastic pipe that is typically clamped or crimped
<b>Threads at connections</b>	None	Yes	None	None
<b>Scratch Test (coin or key)</b>	Shiny silver	Hard to scratch, remains gray	Copper, like a penny	Blue, white or black
<b>Magnet Test</b>	Does not stick	Magnet WILL stick	Does not stick	Does not stick

### Lead



### Galvanized Iron



### Copper



### Plastic

