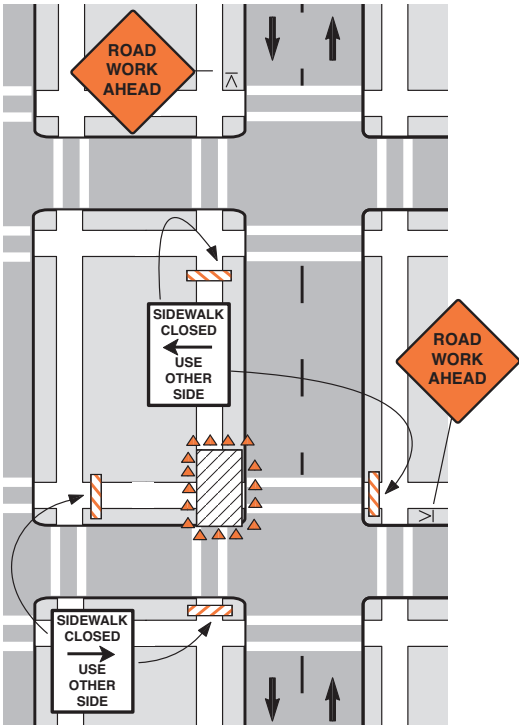


Sidewalk Corner Closure



Notes

1. Additional advance warning may be necessary.
2. Only the traffic control devices controlling pedestrian flows are shown. Other devices may be needed to control traffic on the streets. Use lane closure signing, ROAD NARROWS or LANE NARROWS signs, as needed.
3. Pedestrian traffic signal displays controlling closed sidewalks at signalized intersections should be covered or deactivated.
4. Night time street lighting should be considered.
5. Provide minimum grade and safety standards outlined in the Americans with Disabilities Act (ADA).