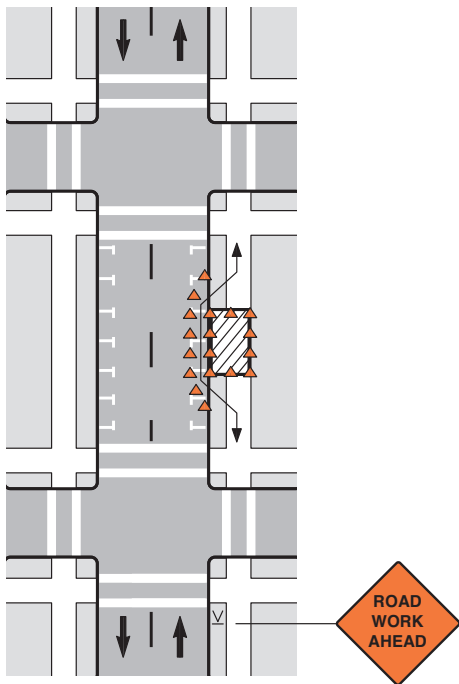


Sidewalk Closure *(Pedestrian Walkway Provided)*



Notes

1. Additional advance warning may be necessary.
2. Only the traffic control devices controlling pedestrian flows are shown. Other devices may be needed to control traffic on the streets. Use lane closure signing, ROAD NARROWS or LANE NARROWS signs, as needed.
3. Where high speeds are anticipated, use a barrier to separate the temporary walkway from vehicular traffic. Refer to part VI of the MUTCD for information on barriers.
4. Signs may be placed along a temporary walkway to guide or direct pedestrians; for example, KEEP RIGHT or KEEP LEFT signs.
5. Provide minimum grade and safety standards outlined in the Americans with Disabilities Act (ADA).