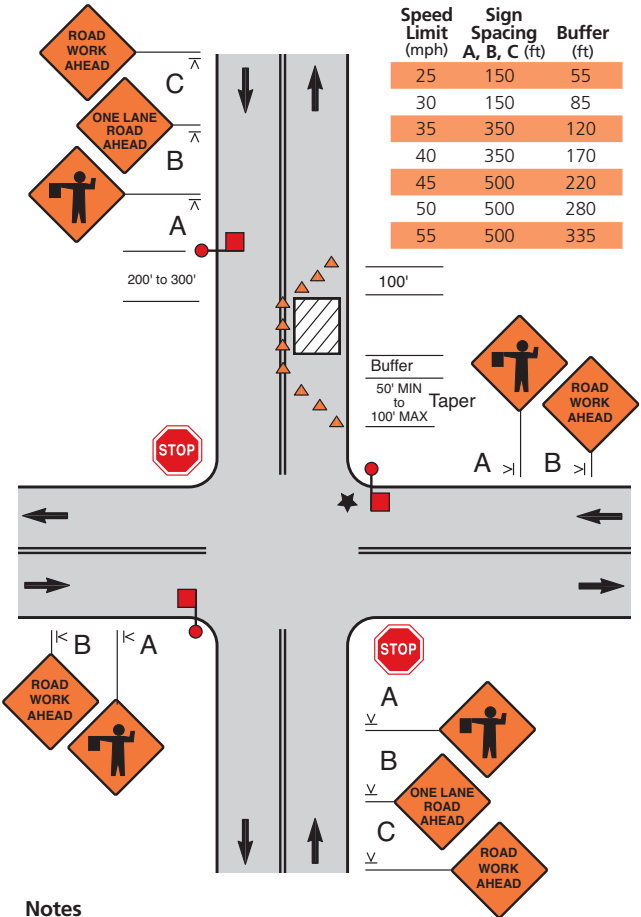


Lane Closure Beyond an Intersection (Work Area on the Side Road)



Notes

1. Depending on traffic conditions, additional traffic control, such as flaggers and appropriate signage, may be needed.
- ★ 2. The middle flagger should be designated *lead flagger* and should coordinate the actions of the other flaggers.
3. The flaggers shall use approved flagging procedures according to the MUTCD and as shown on page 23.