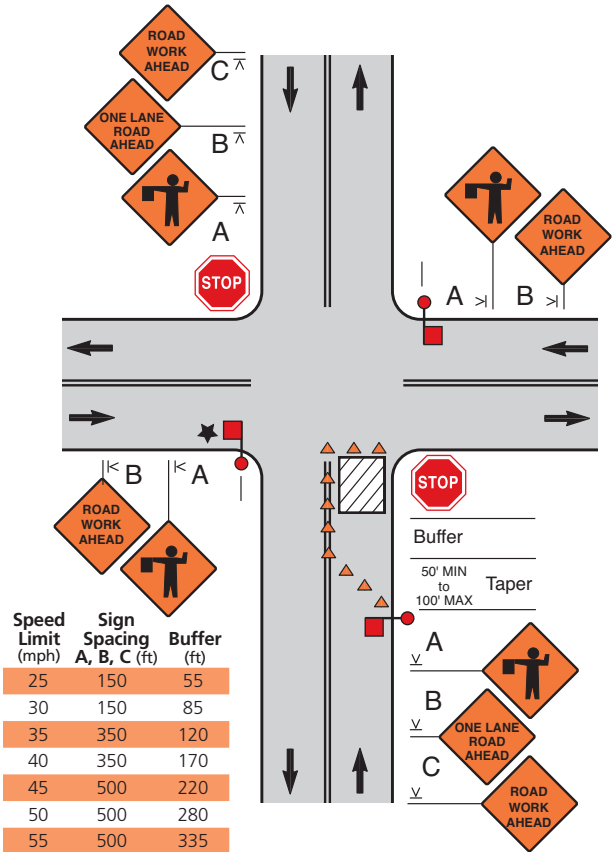


## Lane Closure in Advance of an Intersection (Work Area on the Side Road)



### Notes

- Depending on traffic conditions, additional traffic control, such as flaggers and appropriate signage, may be needed.
- ★ The middle flagger has the best view of traffic from all directions. This flagger should be designated *lead flagger* and should coordinate the actions of the other flaggers.
- The flaggers shall use approved flagging procedures according to the MUTCD and as shown on page 23.