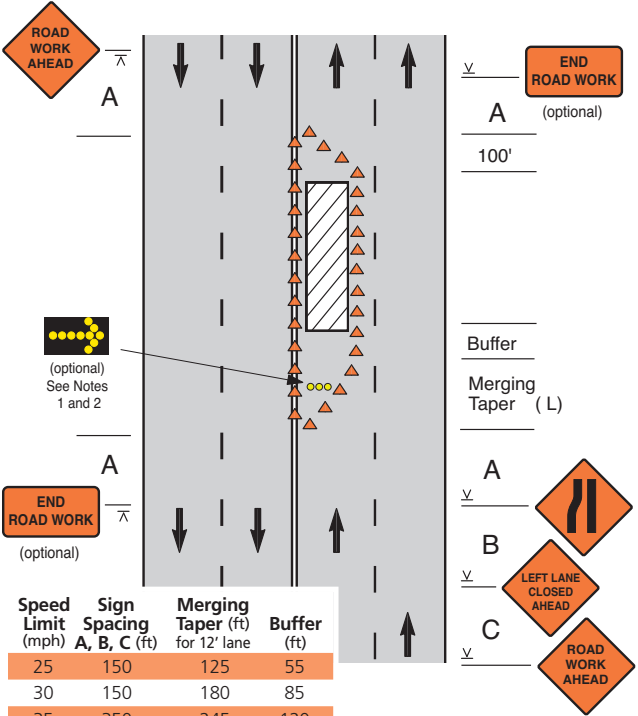


Lane Closure on a Four-Lane Undivided Road



Speed Limit (mph)	Sign Spacing A, B, C (ft)	Merging Taper (ft) for 12' lane	Buffer (ft)
25	150	125	55
30	150	180	85
35	350	245	120
40	350	320	170
45	500	540	220
50	500	600	280
55	500	660	335

Notes

1. Use of an arrow display is optional based on traffic volume, speed, and visibility. Generally, it is a good practice on roads with speeds of 35 MPH or greater. When used, it may be placed near the beginning of the taper, or it may be on a vehicle in the work area.
2. If an arrow display is not used, a LARGE ARROW sign may be used for added guidance.