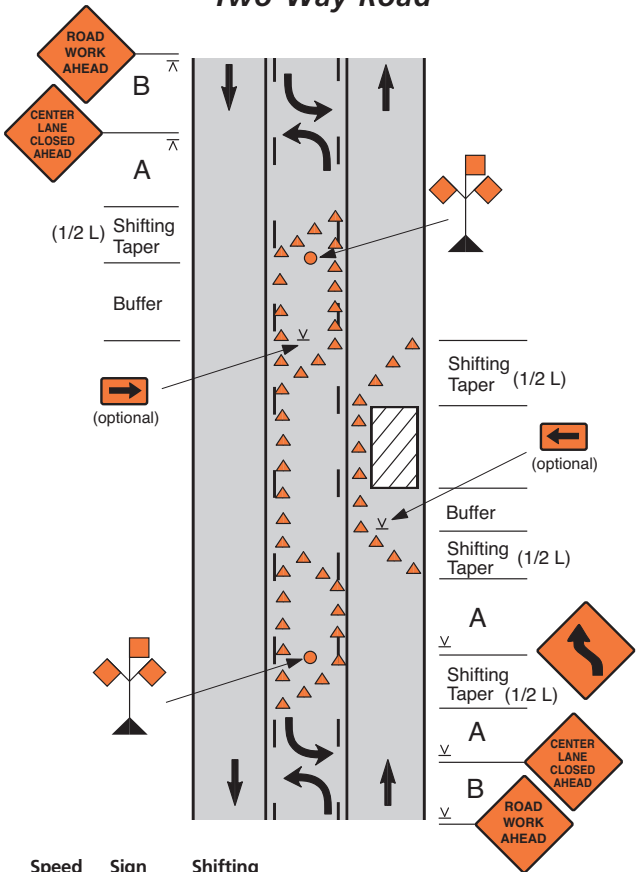


Lane Shift on a Three-Lane, Two-Way Road



Speed Limit (mph)	Sign Spacing A, B (ft)	Shifting Taper (ft) for 12' lane	Buffer (ft)
25	150	65	55
30	150	90	85
35	350	125	120
40	350	160	170
45	500	270	220
50	500	300	280
55	500	330	335

Notes

1. LARGE ARROW signs may be used at the shifts for added visibility.
2. If the speeds are 30 MPH or less, REVERSE TURN signs shall be used instead of REVERSE CURVE.