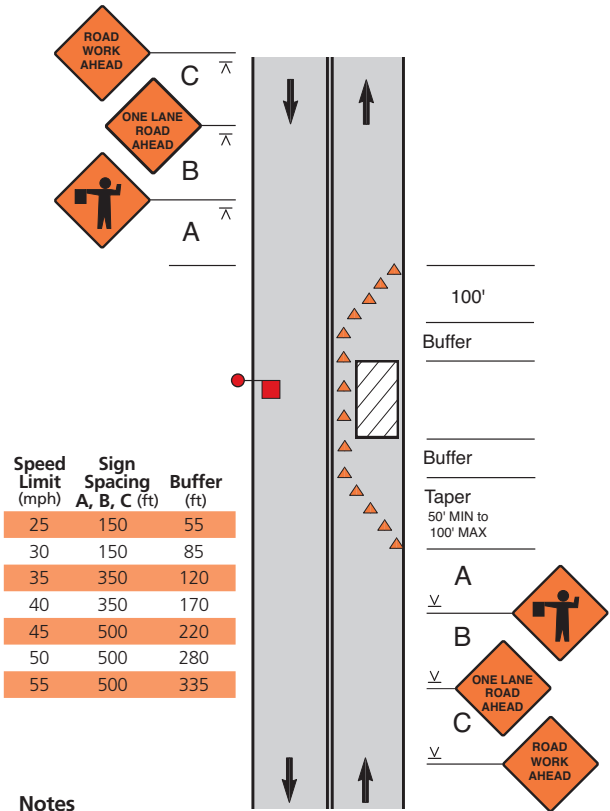


Lane Closure on a Two-Lane Low-Volume Low Speed (30 mph or less) Road (One Flagger Operation)



Notes

1. A single flagger may be adequate for low volume roads. Where one flagger is used, such as for short work areas on straight roadways, the flagger must be visible to approaching traffic from both directions.
2. The flagger shall use approved flagging procedures according to the MUTCD and as shown on page 23.
3. For short duration work (60 minutes or less), the ROAD WORK AHEAD sign may be omitted.