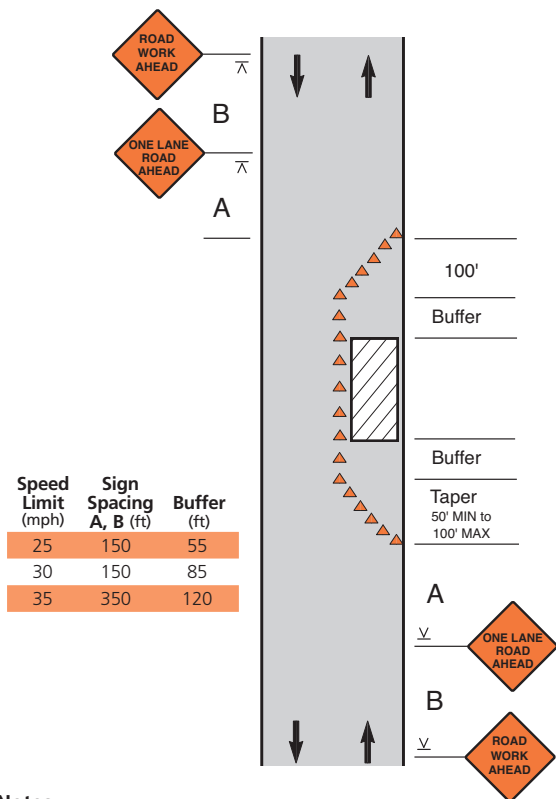


Lane Closure on a Low-Volume Road (No Flagger, Traffic Self-Regulating, 25 MPH or Less)



Notes

1. This layout is only appropriate where work areas are short and sight distance is good, thus allowing traffic to readily see the roadway beyond.
2. Where traffic does not self-regulate effectively, use one or two flaggers (see pages 31 and 32), or add STOP signs for each direction near the beginning of the tapers, with STOP AHEAD signs in advance.