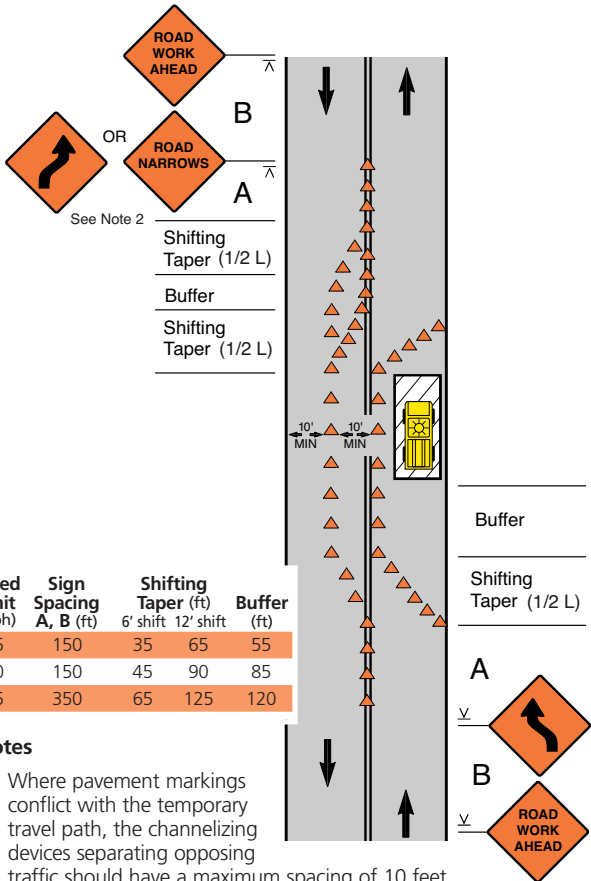


Work in Travel Lane

(Maintaining Two-Way Traffic, 35 MPH or Less)



Notes

- Where pavement markings conflict with the temporary travel path, the channelizing devices separating opposing traffic should have a maximum spacing of 10 feet.
- The ROAD NARROWS or REVERSE CURVE/TURN sign is optional on low volume roads or where the lane shift requires only a minor deviation in the travel path. The REVERSE CURVE/TURN sign is appropriate for larger deviations in the travel path.
- If speeds are 30 MPH or less, REVERSE TURN signs shall be used instead of REVERSE CURVE.