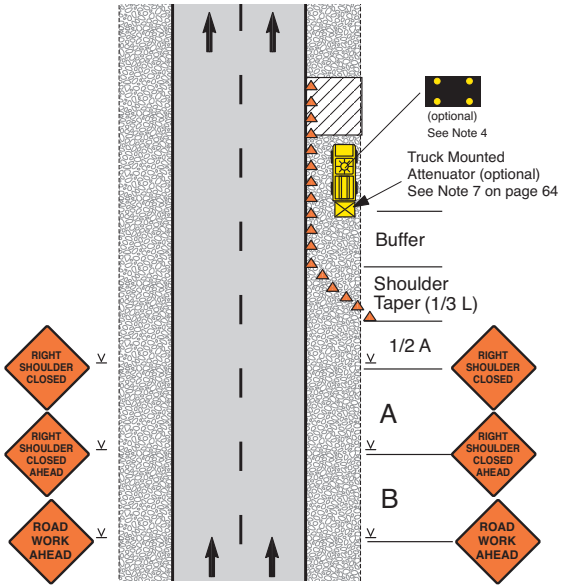


Shoulder Closed on Divided Roadway



Notes

- SHOULDER CLOSED signs should be used on limited-access highways where there is no opportunity for disabled vehicles to pull off the traveled way.
- For short-duration work, one of the SHOULDER CLOSED warning signs may be omitted.
- UTILITY WORK AHEAD or WORKERS signs may be used instead of the warning signs shown.
- Use of an arrow display is optional. If used, it shall be operated in the caution mode.

Speed Limit (mph)	Sign Spacing (ft) A	Sign Spacing (ft) B	Shoulder Taper (ft) 10' shoulder	Buffer (ft)
35	350	350	70	120
40	350	350	90	170
45	500	500	150	220
50	1000	1600	170	280
55	1000	1600	185	335
60	1000	1600	200	415
65	1000	1600	220	485