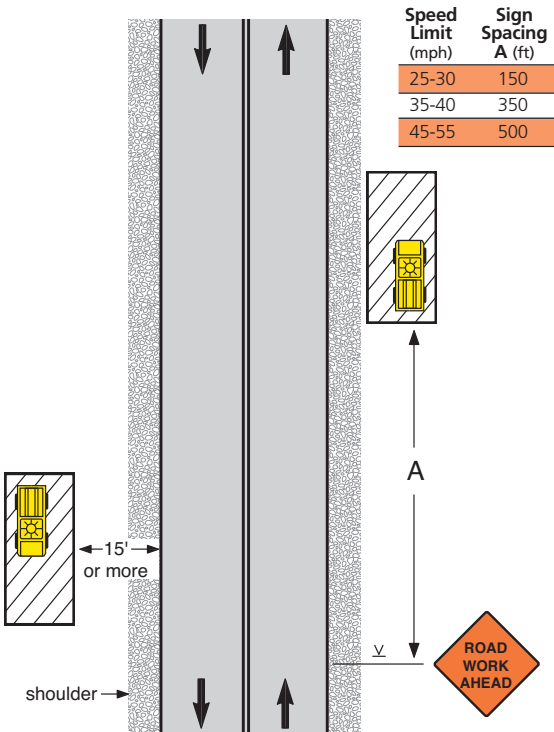


Work Outside the Shoulder



Notes

1. If vehicle and work activity are both behind a guard rail, more than 2 feet behind a curb, or 15 feet or more from the edge of any roadway, then only an activated flashing or revolving yellow light is needed.
2. For short-term, short-duration (60 minutes or less), or mobile operations, the warning sign may be omitted if an activated flashing or revolving yellow light and activated vehicle flashers are used.
3. Other acceptable advance warning signs are those indicating SHOULDER WORK, UTILITY WORK AHEAD, or the WORKERS sign.