



Salt Lake City **Community Food Assessment**

*Dialogue on Local Food
Health, Accessibility,
Affordability and
Economic Opportunity*





What is food sustainability?

Why are we here?

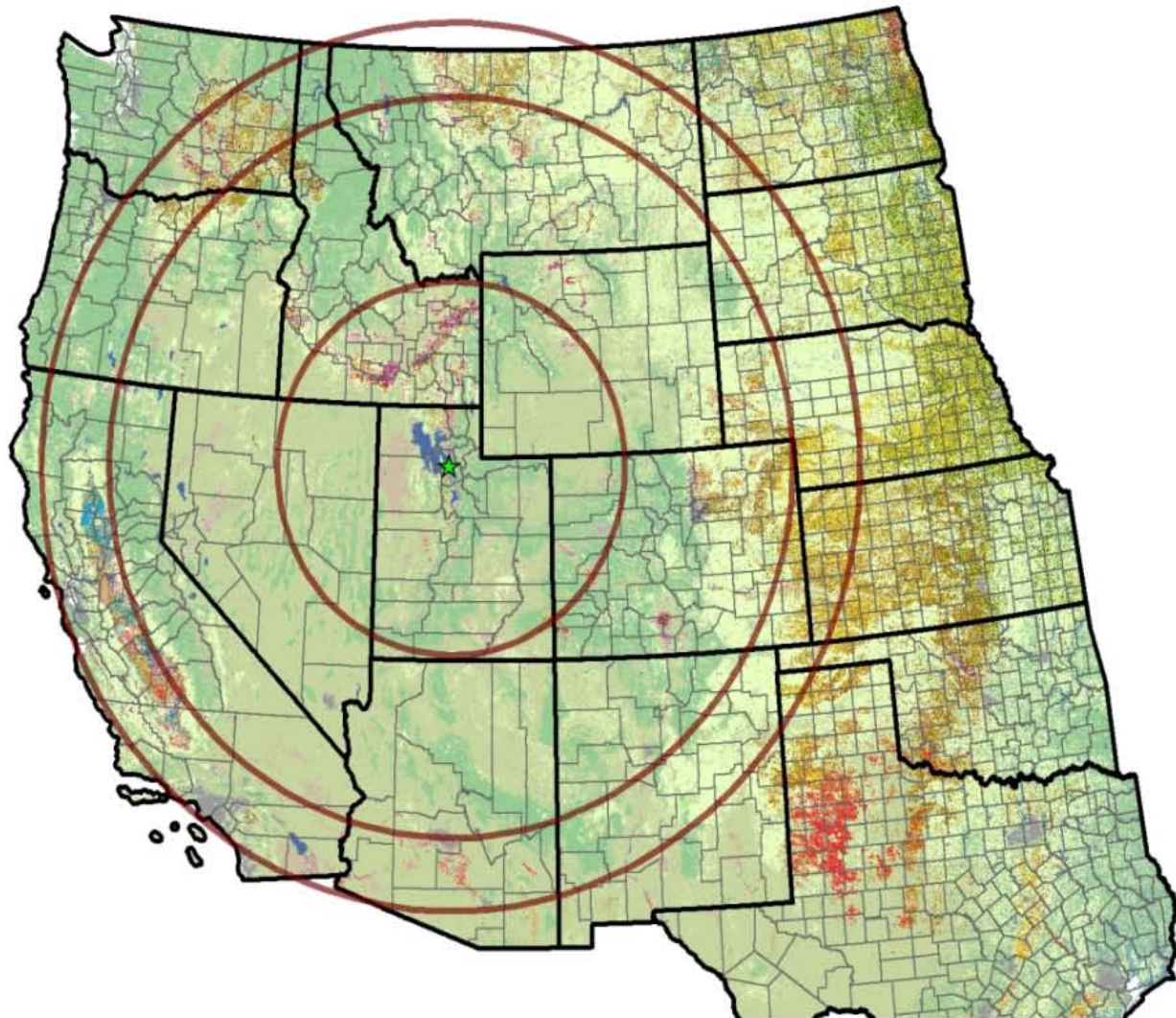
What are we doing?



Source: US Department of Agriculture, National Agricultural Statistics Service

Euclidean Buffers

★ Salt Lake City

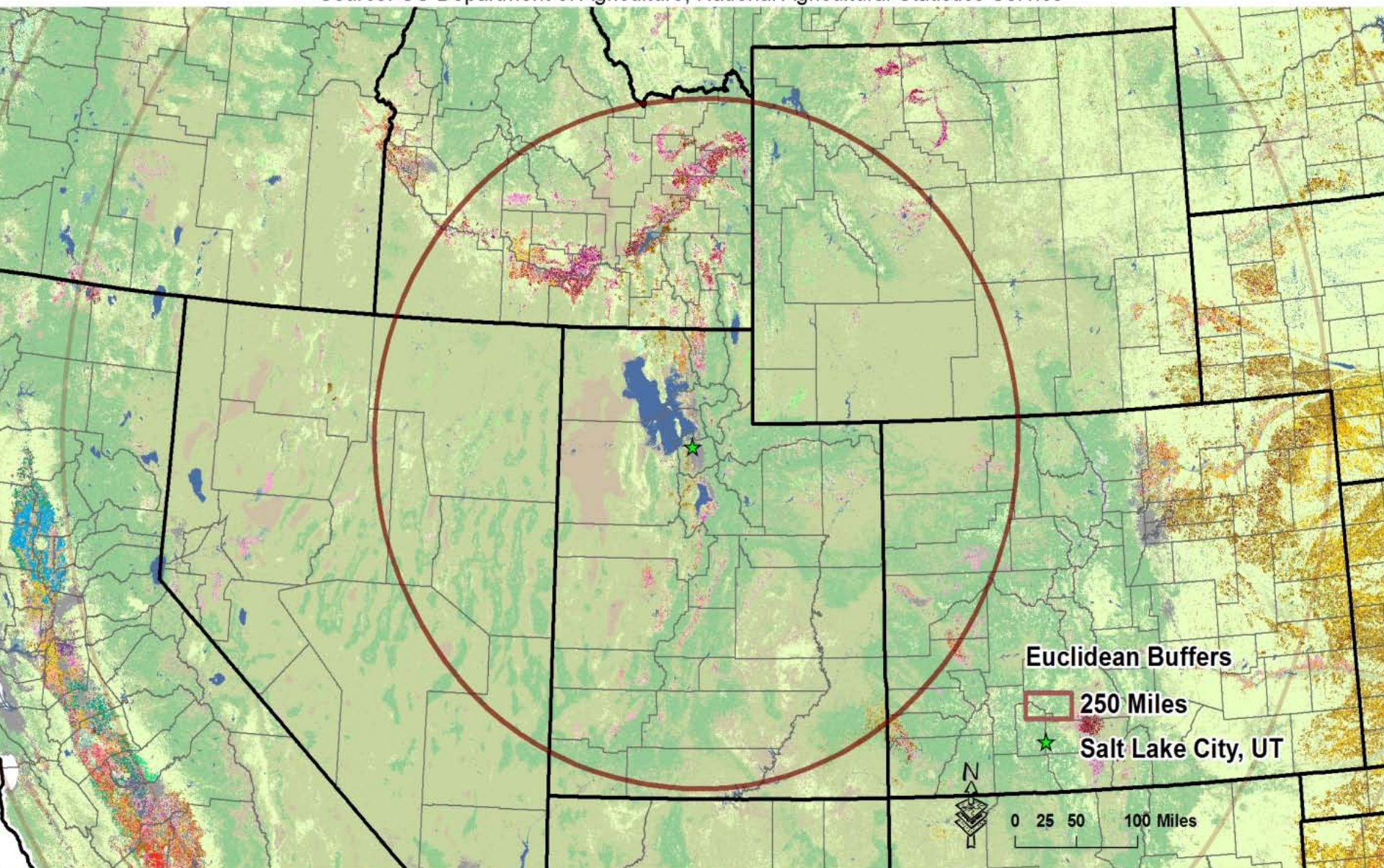


0 50 100 200 Miles



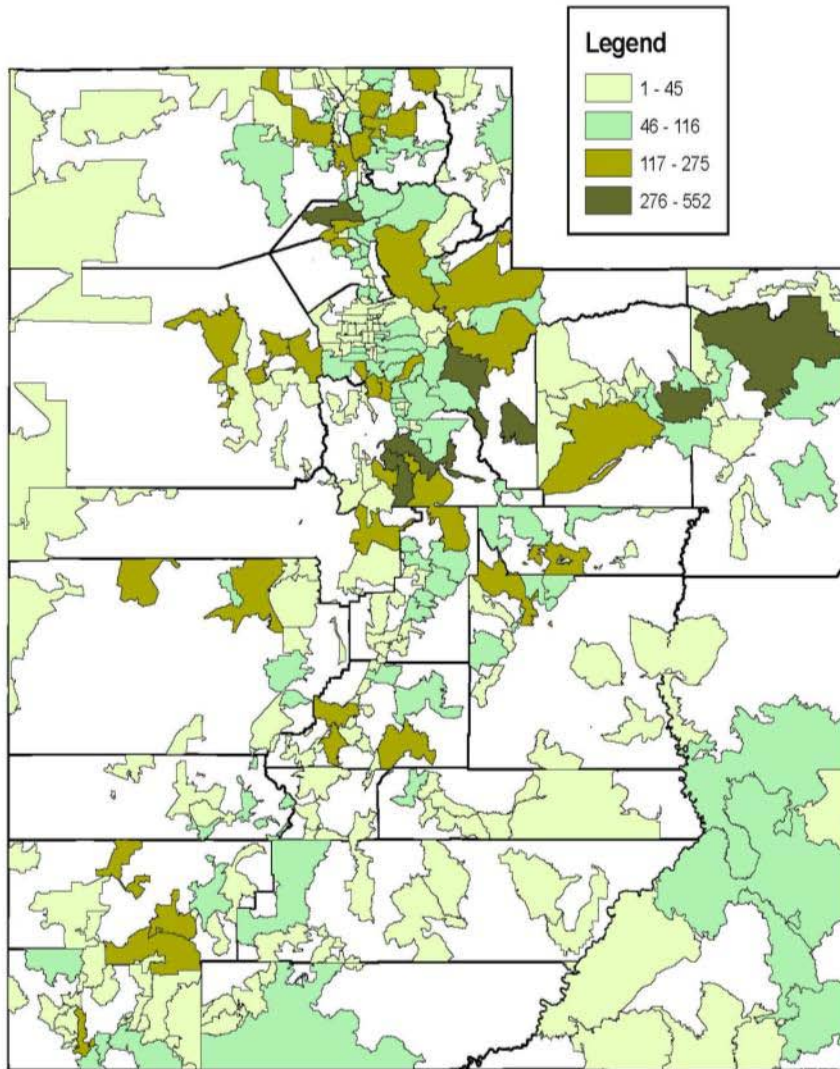
2010 Crop Land Cover Classes: Salt Lake City, UT and Surrounding Environs

Source: US Department of Agriculture, National Agricultural Statistics Service



Corn	Cotton	Rice	Sorghum	Barley	Durum Wheat	Winter Wheat	Oats	Safflower	Alfalfa	Other Hays	Dry Beans	Misc. Veggies & Fruits	Onions	Peas	Tomatoes	Fallow/Idle Cropland	Grass/Pasture/Non-Ag	Woodland
Cherries	Peaches	Apples	Grapes	Other Tree Fruits	Pecans	Almonds	Walnuts	NLCD - Open Water	NLCD - Developed/Open Space	NLCD - Developed/Low Intensity	NLCD - Developed/Medium Intensity	NLCD - Developed/High Intensity						
NLCD - Barren	NLCD - Deciduous Forest	NLCD - Evergreen Forest	NLCD - Mixed Forest	NLCD - Shrubland	NLCD - Grassland Herbaceous	NLCD - Woody Wetlands	NLCD - Herbaceous Wetlands	Pistachios	Triticale	Asparagus	Garlic	Cantaloupes						
Prunes	Olives	Oranges	Peppers	Pomegranates	Nectarine	Plums	Strawberries	Squash	Apricots	Dbl. Crop Win/Wh/Corn	Dbl. Crop Oats/Corn	Lettuce	Dbl. Crop Barley/Sorghum	Dbl. Crop Win/Wh/Sorghum				

Farms In Utah By Zip Code



Source: NASS Salt Lake City: John Hilton

Within 250 Miles
40,988 farms

Utah
16,600 farms

Source USDA



From 1997 to 2007

Utah Certified Organic Operations

Increased from 3 to 48

Utah's Top 5 Agriculture
Food Commodities

Dairy products

Cattle and Calves

Hogs

Turkeys

Chicken eggs



In Utah

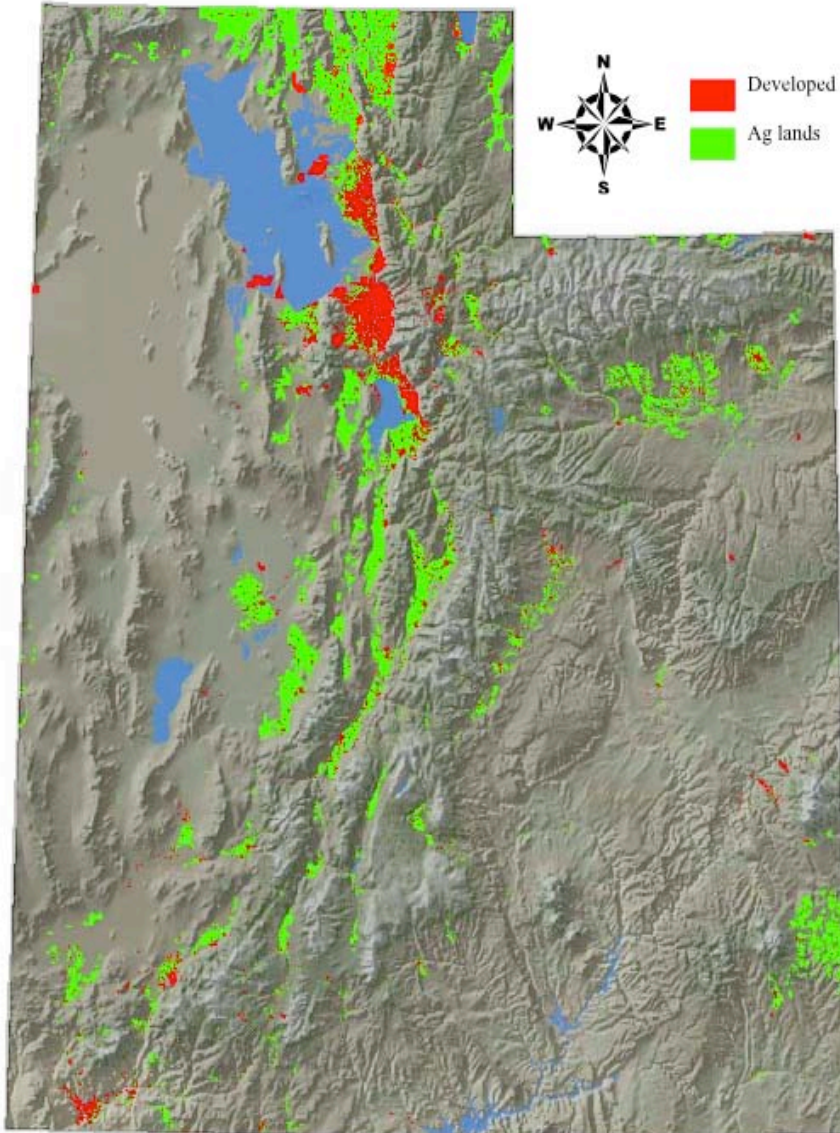
89% of Principal Operators are male

11% are female

The average age is **57.4**



Agricultural and Developed Lands in Utah



Utah Land Use Stats

Over **1,244 square miles** developed land

Over **4,321 square miles** agricultural land

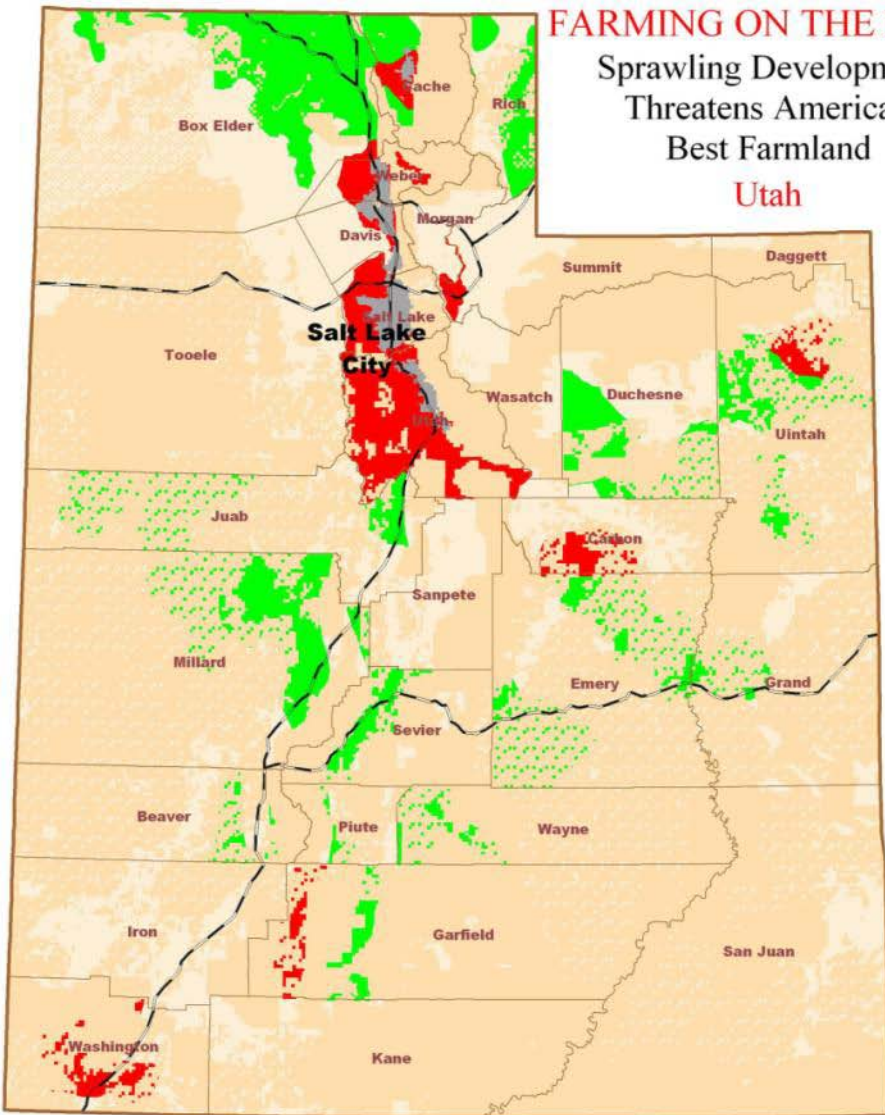
Average of **3.2 people** per developed acre

Source: Utah Governors Office of Planning and Budget: Land Use Planning-2008

FARMING ON THE EDGE

Sprawling Development
Threatens America's
Best Farmland

Utah



Legend:

- High-Quality Farmland & High Development
- High-Quality Farmland & Low Development
- Federal & Indian Lands
- Urban Areas
- Other Lands

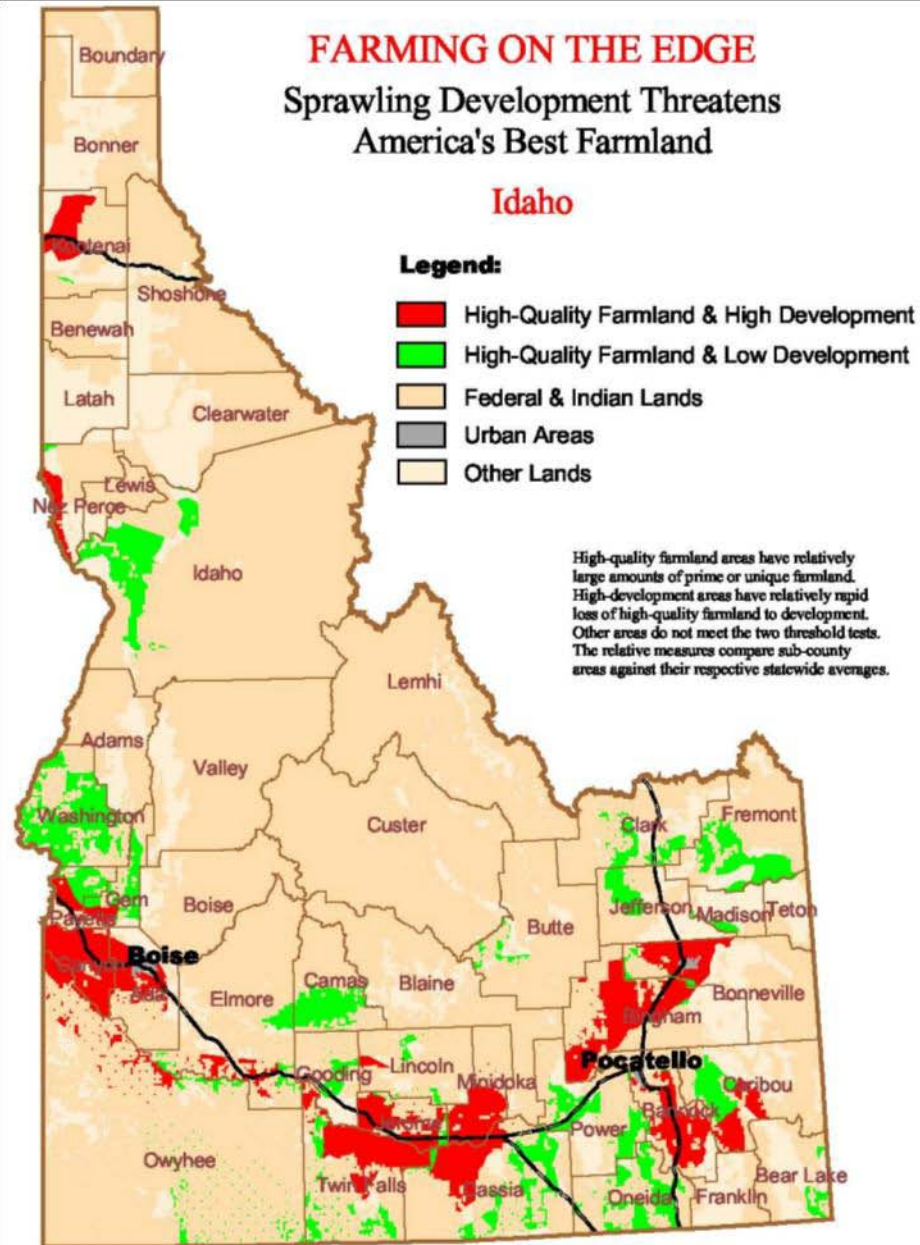
0 20 Miles

American Farmland Trust
www.farmland.org

FARMING ON THE EDGE

Sprawling Development Threatens
America's Best Farmland

Idaho



Legend:

- High-Quality Farmland & High Development
- High-Quality Farmland & Low Development
- Federal & Indian Lands
- Urban Areas
- Other Lands

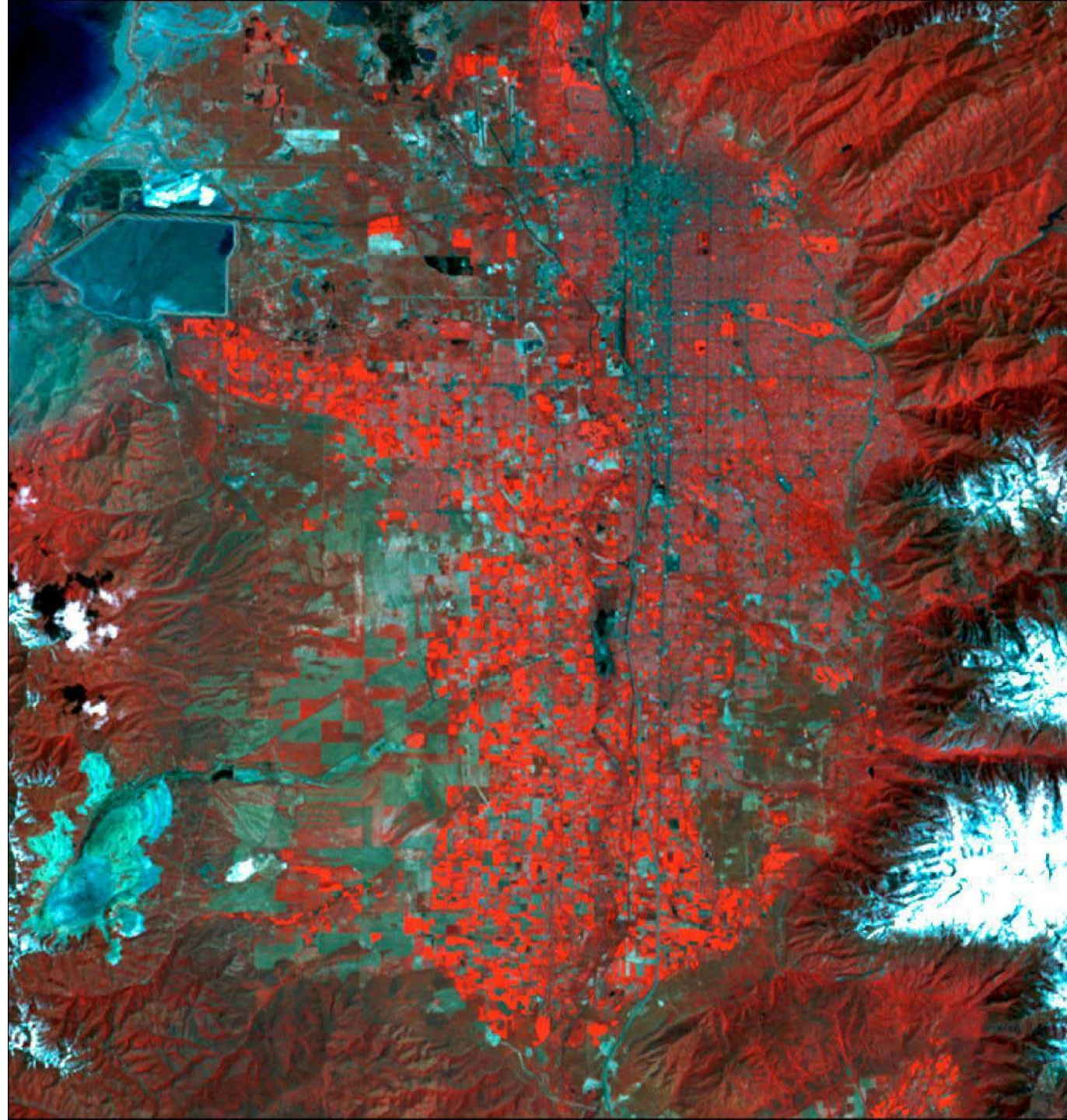
High-quality farmland areas have relatively large amounts of prime or unique farmland. High-development areas have relatively rapid loss of high-quality farmland to development. Other areas do not meet the two threshold tests. The relative measures compare sub-county areas against their respective statewide averages.

0 20 Miles

American Farmland Trust
www.farmland.org

Landsat MSS May 22, 1973

The bright red parcels are
agricultural land



Source:
Charles W. Gay
Associate Vice President
for Cooperative Extension

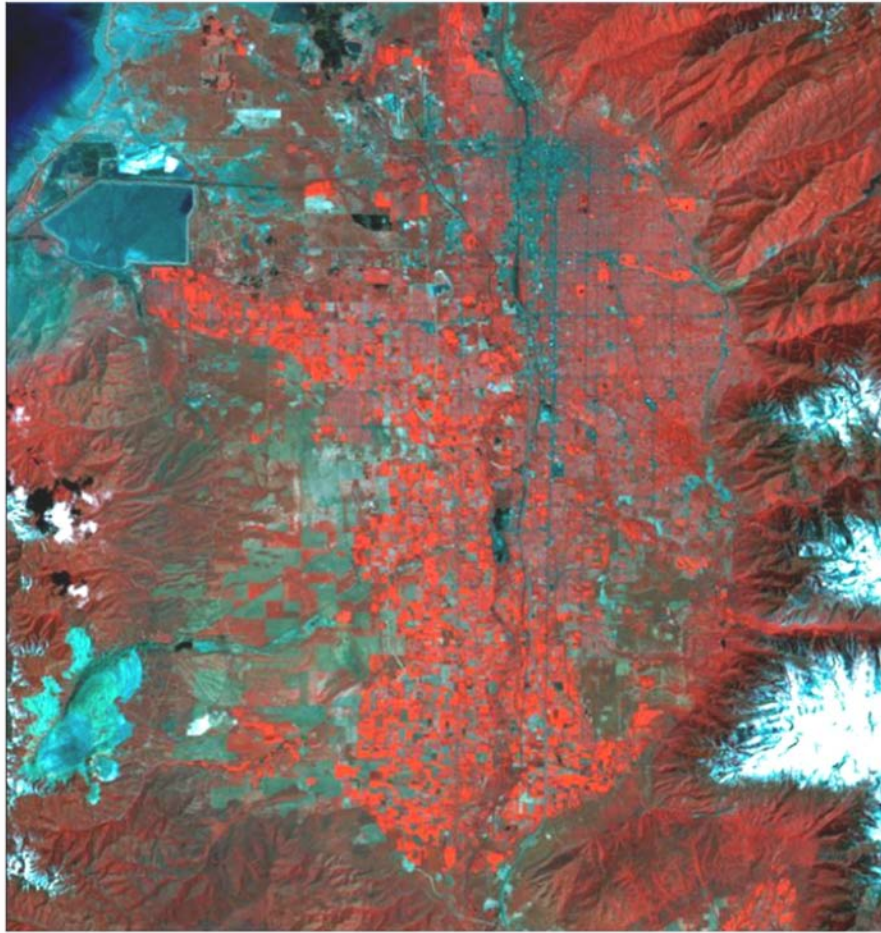
Landsat TM July 16, 2009

The bright red parcels are
agricultural land

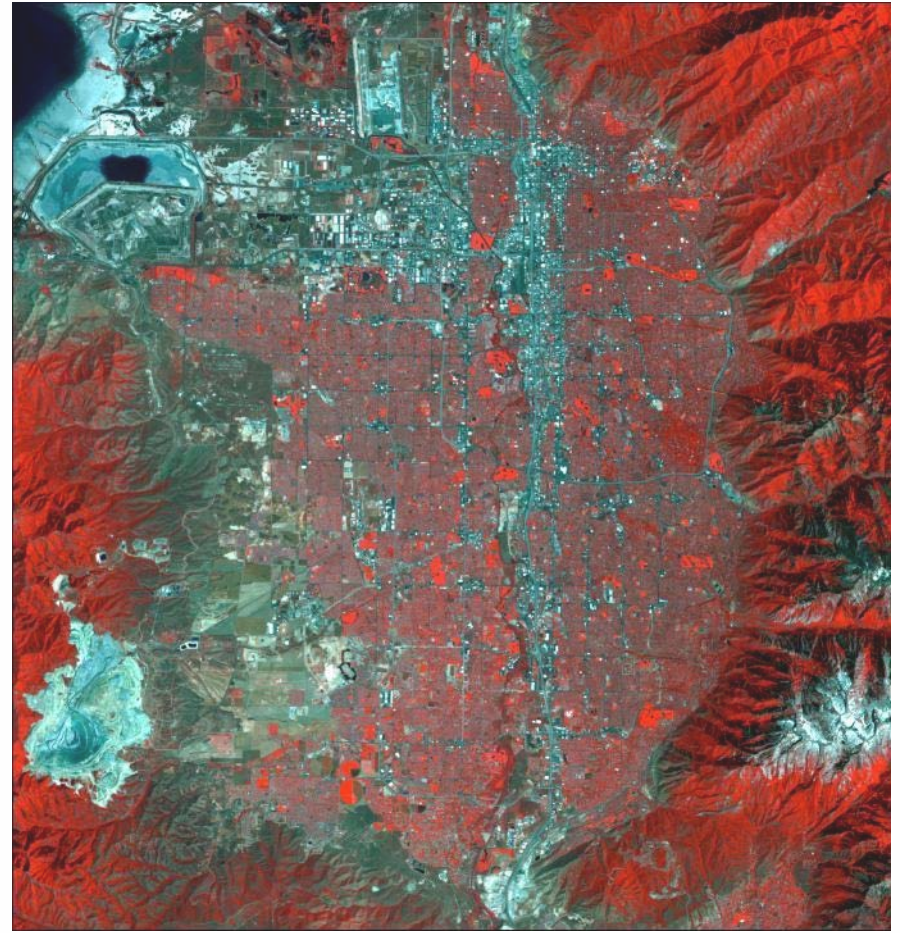
Source:
Charles W. Gay
Associate Vice President
for Cooperative Extension



Salt Lake County, Utah Agricultural Land Use Change 1973-2009

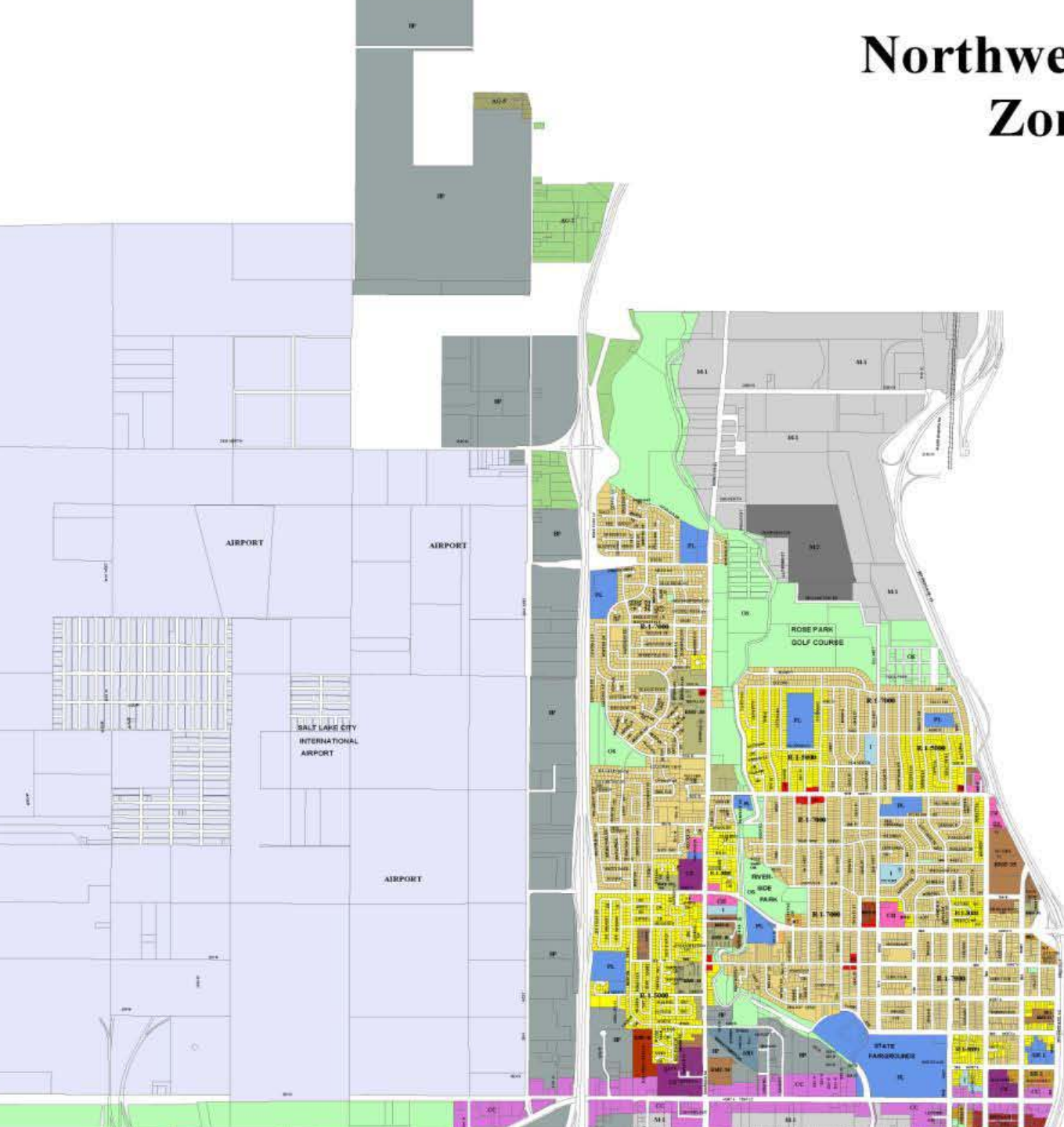


Landsat MSS
Salt Lake County: May 22, 1973



Landsat TM
Salt Lake County: July 16, 2009

Northwest Community Zoning Map



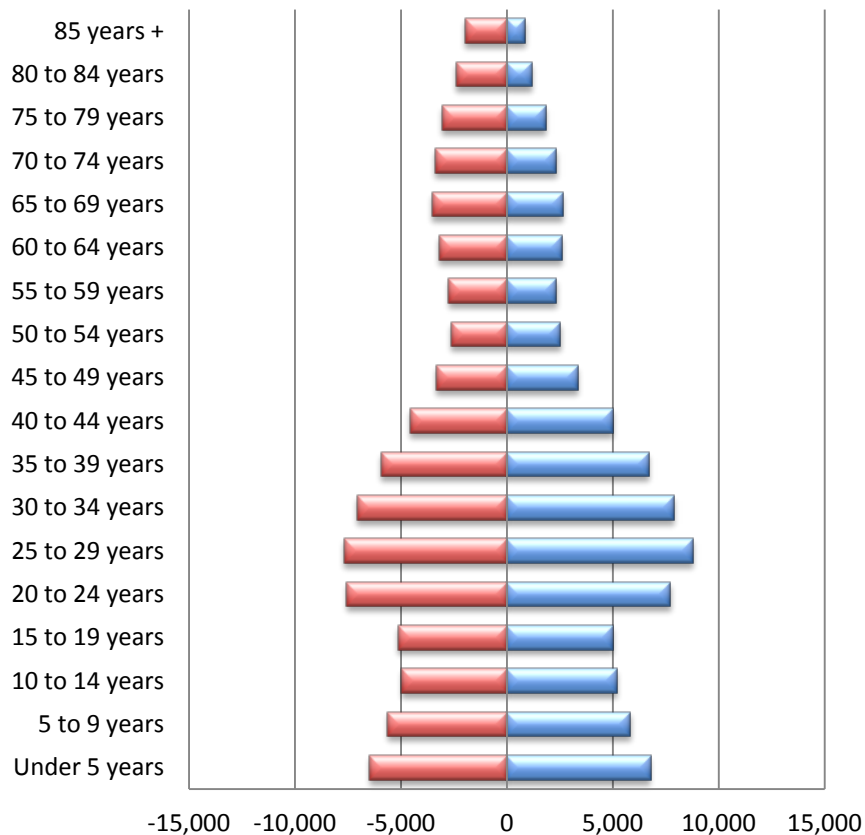
Map Legend

- AG-2, Agriculture-2 Acre Minimum
- AG-5, Agriculture-5 Acre Minimum
- Airport
- BP, Business Park
- CB, Community Business
- CC, Commercial Corridor
- CG, General Commercial
- CN, Neighborhood Commercial
- CS, Community Shopping
- I, Institutional
- M-1, Light Manufacturing
- M-2, Heavy Manufacturing
- MH, Mobile Home Park
- OS, Open Space
- PL, Public Lands
- R-1-5000, Single Family Residential
- R-1-7000, Single Family Residential
- R-2, Single and Two-Family Residential
- RMF-30, Low Density Multifamily Residential
- RMF-35, Moderate Density Multifamily Residential
- RMF-45, Moderate/High Density Multifamily Residential
- SR-1, Special Development Pattern Residential
- SR-3, Special Development Pattern Residential

Population by Race & Ethnicity: Salt Lake City, UT 1990-2010



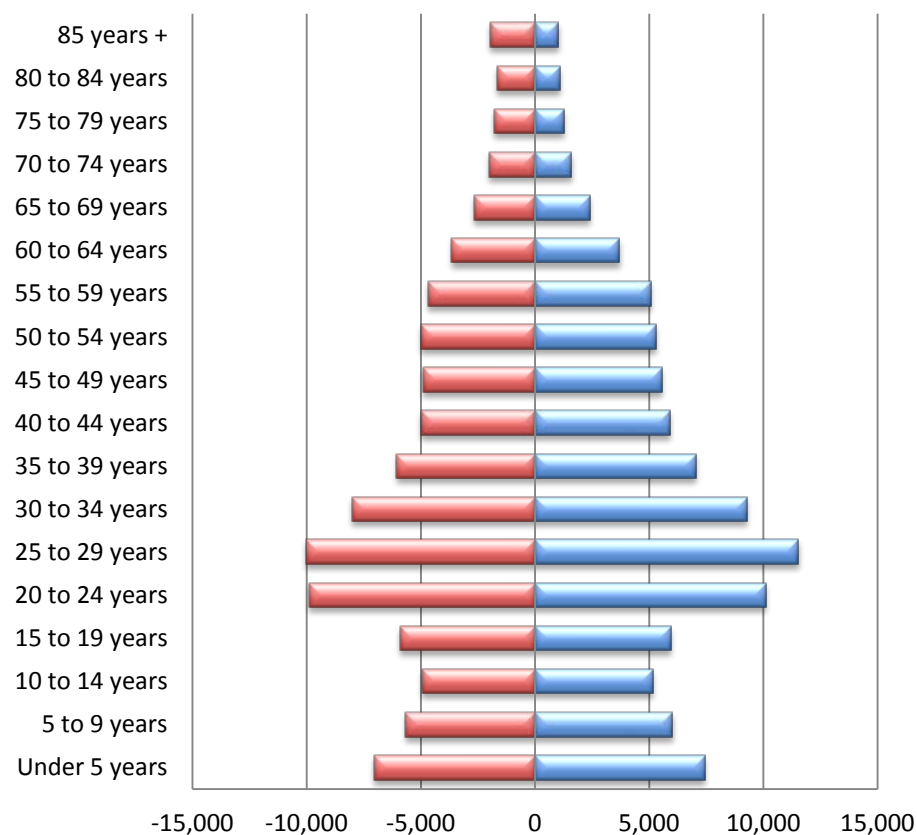
Population Pyramid (1990): Salt Lake City, UT



Source: US Census Bureau

■ 1990 Females
■ 1990 Males

Population Pyramid (2010): Salt Lake City, UT

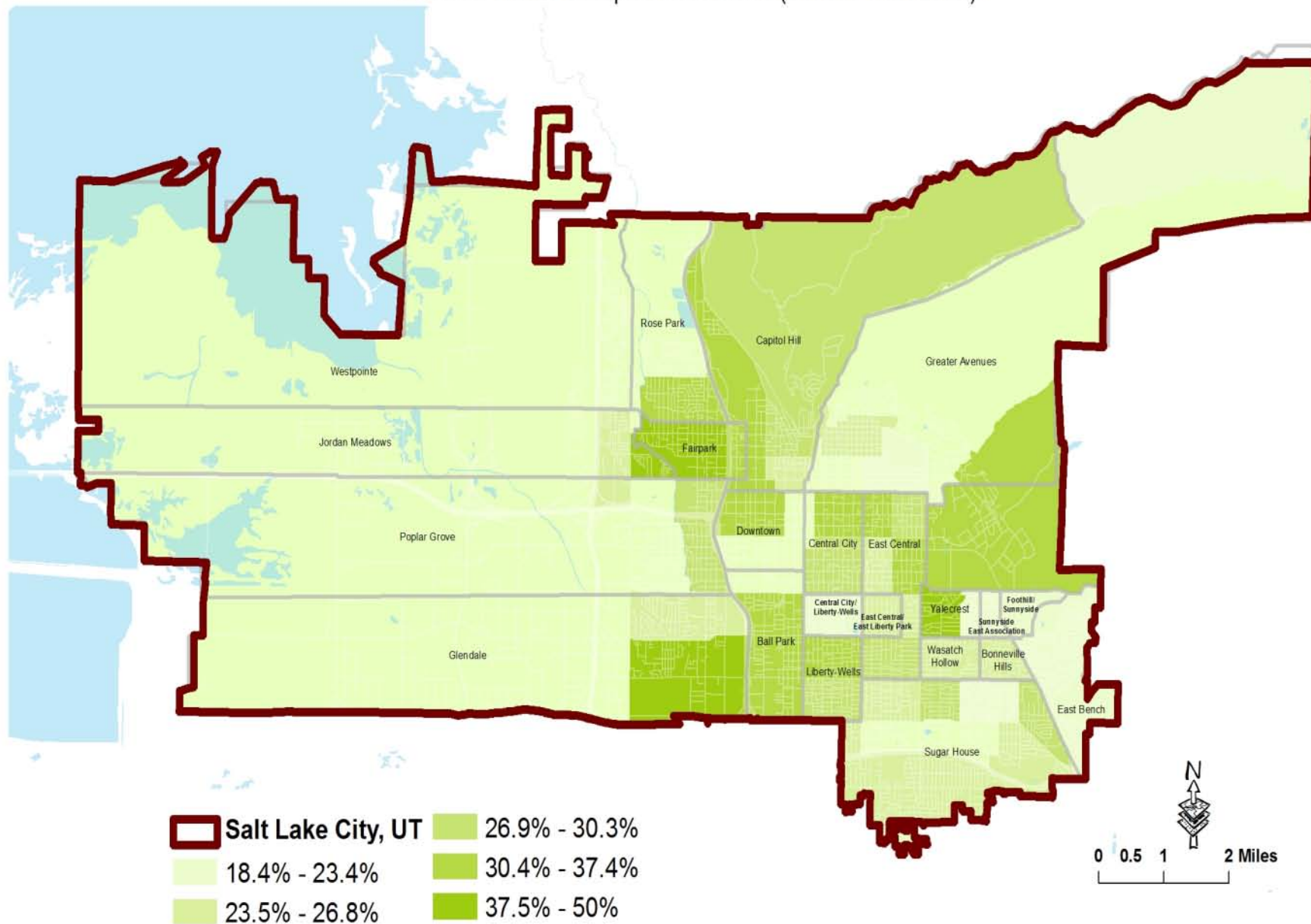


Source: US Census Bureau
American FactFinder: QT-

■ 2010 Females
■ 2010 Males

2009 Median Gross Rent as a Percent of Household Income Last 12 Months

Universe: Renter Occupied Households (Census Tract Level)



Source: US Census Bureau, American Community Survey 5 Year Estimates (2005-2009)



Where Do We Get Our Food?

In Salt Lake City there are:

76 Convenience /Gas Marts

63 Grocery Retail Locations

8 Farmers Markets



14

Food Support Resource Services

HILDEGARDE'S
FOOD PANTRY

ST. MARK'S
CATHEDRAL





SLC Food Stamp Recipients, Dec 2011:
27,212 Households

Family of four monthly food stamp
allocation:

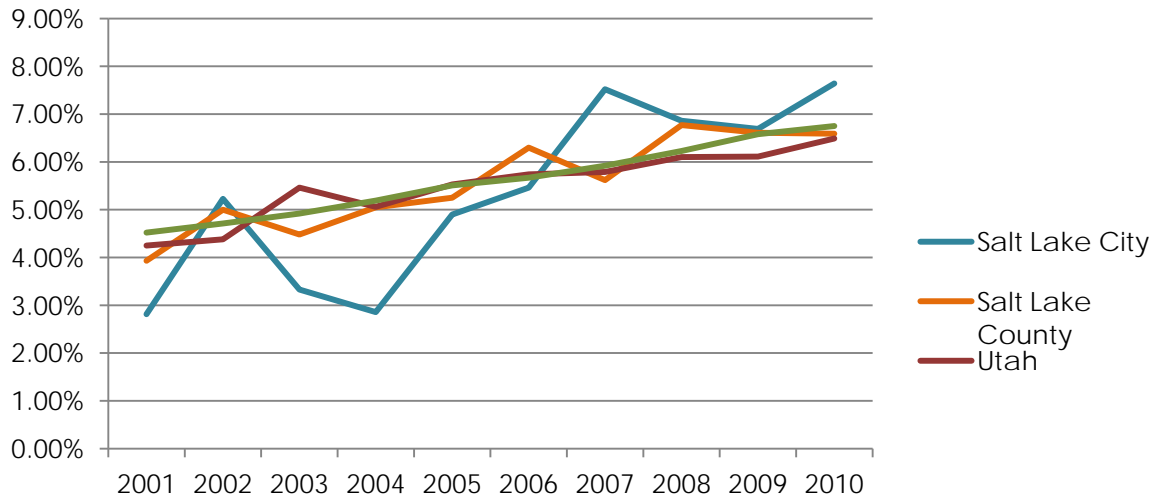
\$668 maximum

Single Adult monthly food stamp
allocation:

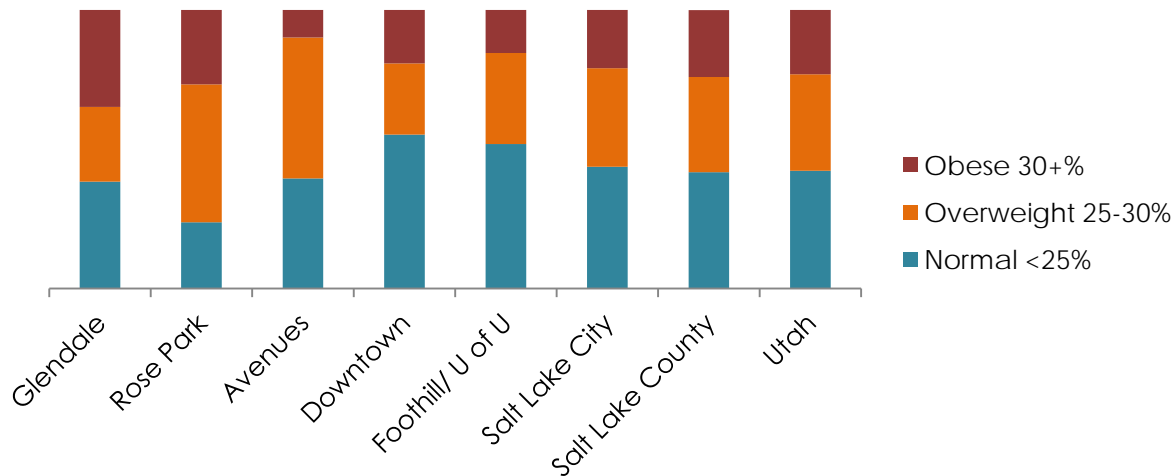
\$200 maximum



Diabetes Rates 2001-2010



BMI 2010



Health
Trends
Salt Lake City

Local Economic Trends:

Farm to School

**Community Supported
Agriculture (CSA)**

Community Gardens

Farmer to Restaurant

Farm to Hospital





Emerging Urban Agriculture





WELCOME TO
SALT LAKE CITY

SEARCH slcgov

Government Residents Business Visitors Services Directory Programs Events Join In

SLCGREEN



Home Calendar Volunteer Carbon Calculator Contacts

Recycling & Waste Reduction
Climate Change & Air Quality
Energy
Mobility & Transportation
Open Space
Urban Forestry
Water
Food Production
Community Health
Housing
e2 Programs
Code Revision Project

Community Food Assessment

Salt Lake City is in the process of conducting a Community Food Assessment to determine the social, economic and environmental health of the food system, and identify key challenges, barriers and unmet needs. The assessment will be evaluating the entire life cycle of our food system from production to plate to food waste, to provide guidance towards crafting effective policies to strengthen it;

The following areas of concern shall be the primary focus of the food system assessment:

1. Production: This includes the growing, raising, and harvesting of any food item.
 - Outline demographics and determine what is produced locally and what percentage is consumed in the City verses export to other markets.
2. Processing and Distribution: Processing addresses how food is prepared for market. Distribution addresses how food gets to market.
 - Determine what is processed in the City, and how it is distributed. Determine the local market's capacity for processing and identify limitations.
3. Consumption: This includes all the ways people access food. Identify all direct (Community Supported Agriculture (CSA), Farmers Markets, Fruit Stands), and indirect (grocers, restaurants, charitable and federal assistance programs) consumer food sources.
 - Identify community, institution, and home gardens.
4. Nutrition and Health: Nutrition and health includes how people are eating, and preparing meals, along with how the food they eat may affect their health.
 - Survey residents to understand how and where people are preparing and eating food. Gather data on the prevalence of diet related disease(s).
5. Nutrition Education: This includes all programs addressing nutrition.
 - Identify all nutrition programs available within the City, and how many people are served.
6. Food Waste: This includes any food substance, raw or cooked, which is discarded, or intended or required to be discarded.
 - Identify consumable verses inconsumable waste, total volume donated and discarded.

[Progress Report 1 \(PDF\)](#)
[Community Food Assessment Data & Demographics \(PowerPoint\)](#)
[Map of Regional Crop Production \(PDF Map\)](#)
[What is with in 250 miles of SLC via Street Networks? \(PDF Map\)](#)




Vicki Bennett, Director
Division of Sustainability and Environment
Physical Address
City & County Building
451 South State, Room 145
Salt Lake City, Utah
Mailing Address
PO Box 145467
Salt Lake City UT 84114-5467
Phone Number
801.535.6438
Fax
801.535.7789
Email Address
slcgreen@slcgov.com
Hours of Operation
8:00 a.m. to 5 p.m.
Monday - Friday

Salt Lake City

Community Food Assessment

<http://www.slcclassic.com/slcgreen/food/CFA.htm>