



Partners and Stakeholders Meeting

February 16, 2024



AGENDA

- 1) 15 mins - Welcome, CPRG Approach, and Updates
- 2) 10 mins - PCAP GHG Reduction Measures
- 3) 10 mins - SL-CLEAR Public Survey
- 4) 20 mins - Environmental Justice Committee and LIDAC
- 5) 30 mins - CPRG Implementation Grants
- 6) 5 mins - Looking Ahead and CCAP Development



EPA Climate Pollution Reduction Grants (CPRG)

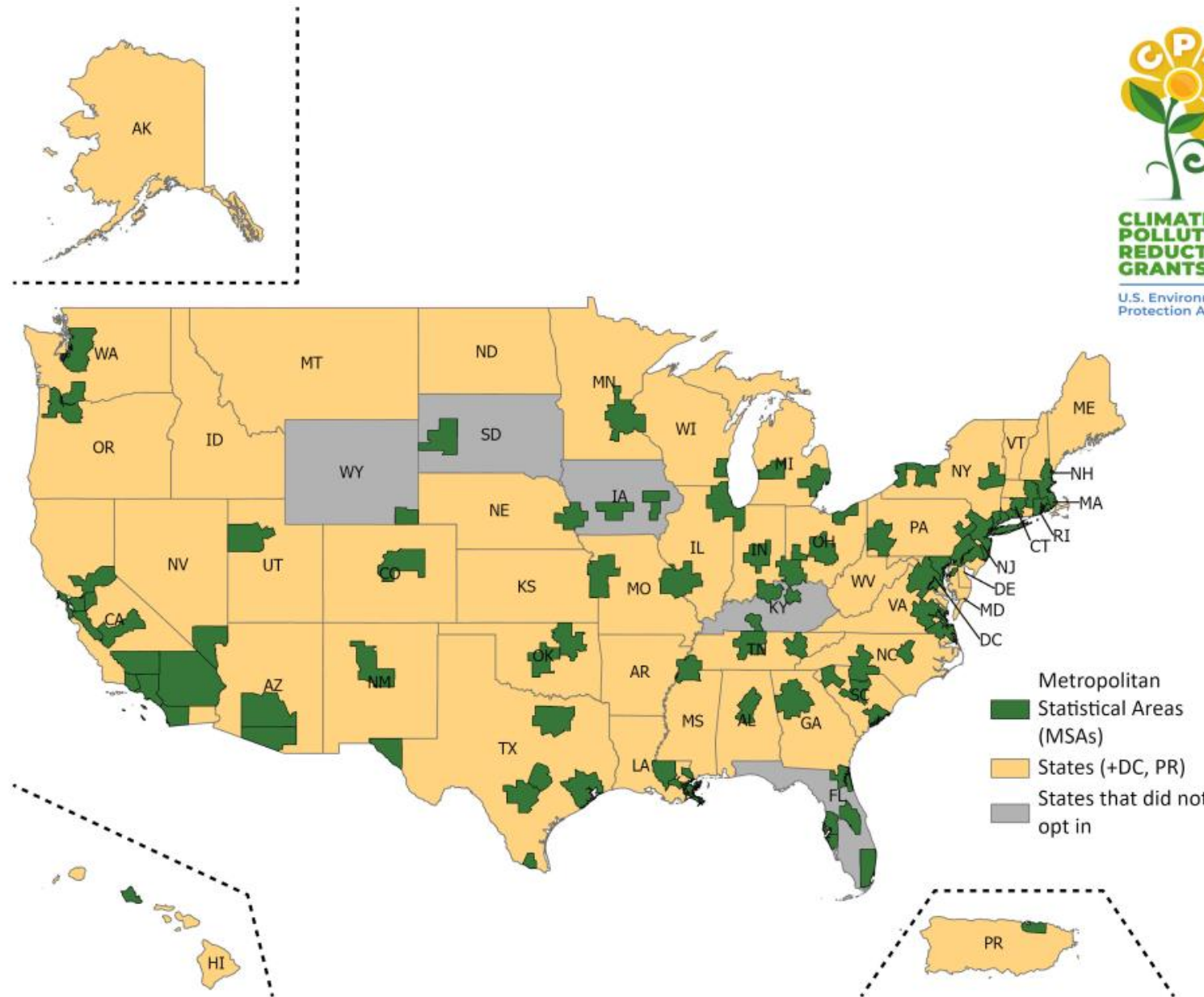
PROJECT APPROACH AND UPDATES





**CLIMATE
POLLUTION
REDUCTION
GRANTS**

U.S. Environmental
Protection Agency



Beehive Emission Reduction Plan

EPA CPRG: Key Deliverables

EPA CPRG: Key Deliverables

Priority Climate Action Plan ("PCAP")

Due March 1, 2024

Implementation Grant Proposals

Due April 1, 2024

EPA CPRG: Key Deliverables

Priority Climate Action Plan ("PCAP")

Due March 1, 2024

Implementation Grant Proposals

Due April 1, 2024

Comprehensive Climate Action Plan ("CCAP")

Due August 4, 2025

*Two years from grant
award date*

EPA CPRG: Key Deliverables

Priority Climate Action Plan ("PCAP")

Due March 1, 2024

Implementation Grant Proposals

Due April 1, 2024

Comprehensive Climate Action Plan ("CCAP")

Due August 4, 2025
*Two years from grant
award date*

Status Report

Due August 4, 2027
*Four years from grant
award date*

EPA CPRG: Key Deliverables

**Priority
Climate
Action Plan
("PCAP")**

Due March 1, 2024

**Implementation
Grant Proposals**

Due April 1, 2024

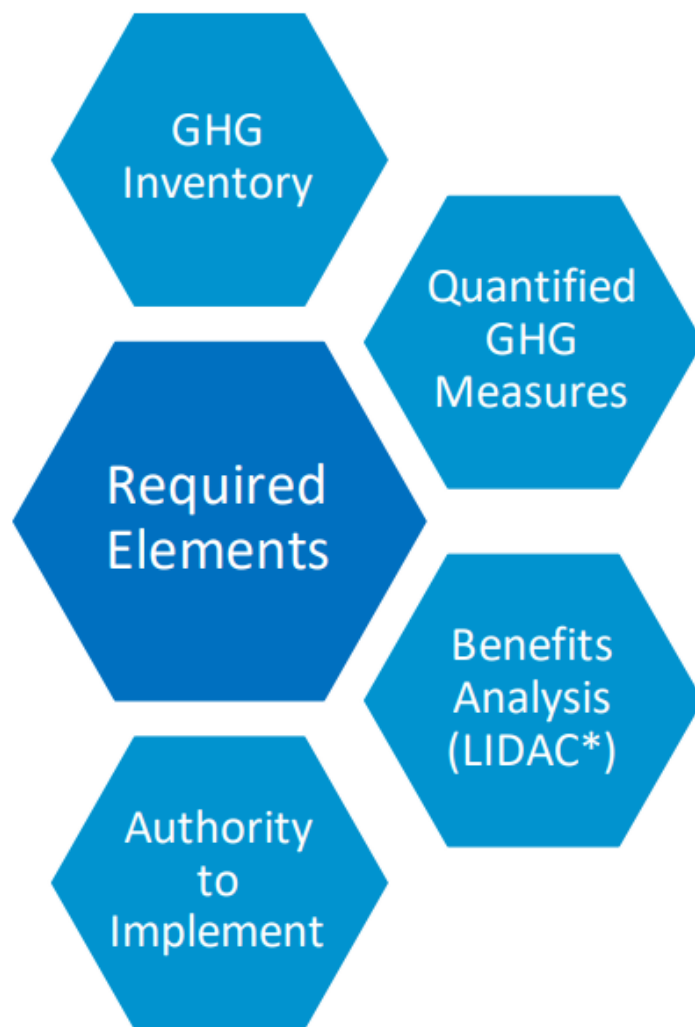
**Comprehensive
Climate Action
Plan
("CCAP")**

Due August 4, 2025
*Two years from grant
award date*

**Status
Report**

Due August 4, 2027
*Four years from grant
award date*

Priority Climate Action Plan



- Due March 1, 2024
- Identifies near-term action items to prepare for implementation grants
- Can focus on specific sector(s) or sources
- Limited set of requirements that set foundations for informed decisions
- May build on previous climate planning efforts

* Low-income and disadvantaged community



PRIORITY CLIMATE ACTION PLAN (PCAP) MEASURES



Buildings



Electricity



Natural and Working Lands



Transportation



Water and Wastewater

Priority Sectors: SL-CLEAR PCAP

Priority Sectors: SL-CLEAR PCAP

Electricity



Utility



Distributed

14 Measures Submitted

Priority Sectors: SL-CLEAR PCAP

Electricity



Utility



Distributed

14 Measures Submitted

Transportation



Transit



Personal EVs



Electric Fleets



Active Transport

28 Measures Submitted

Buildings

Priority Sectors: SL-CLEAR PCAP

Electricity



Utility



Distributed

14 Measures Submitted

Transportation



Transit



Personal EVs



Electric Fleets



Active Transport

28 Measures Submitted

Buildings



Electrification



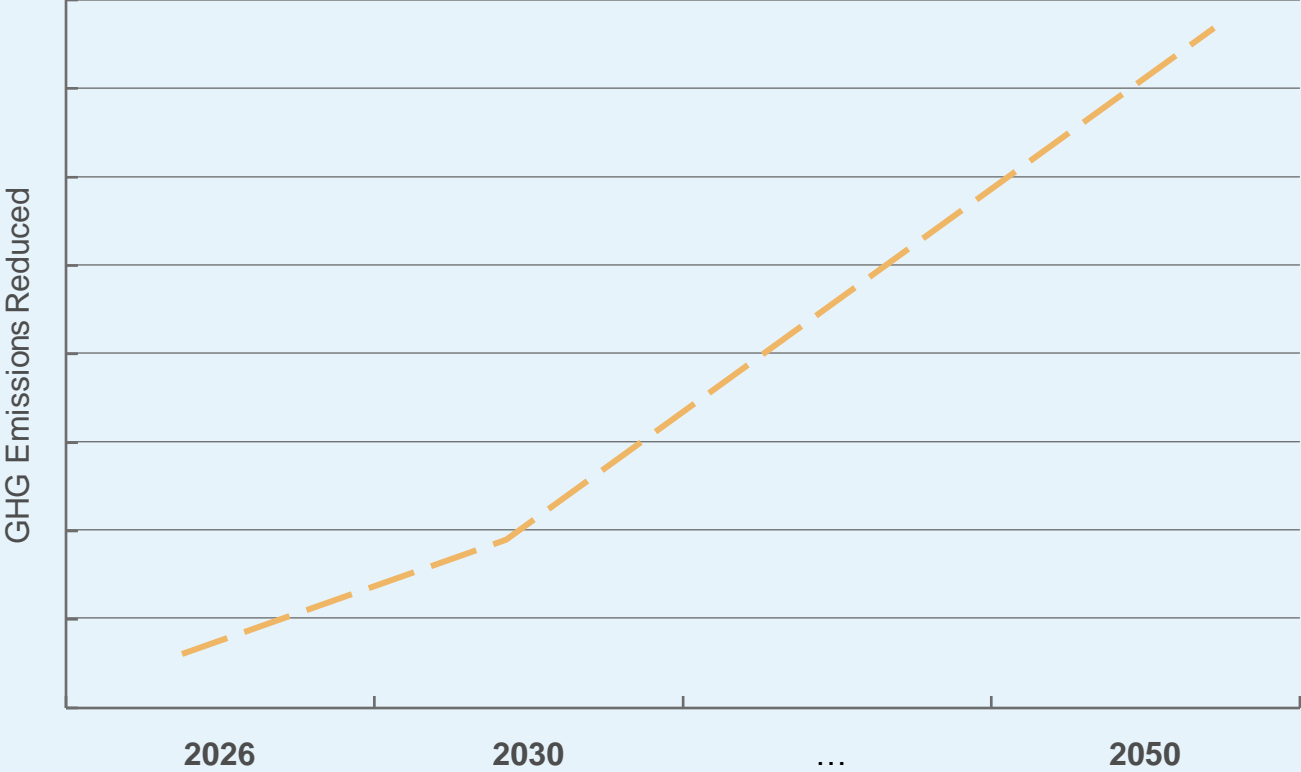
Residential Efficiency



Non-Residential Efficiency

25 Measures Submitted

SL-CLEAR GHG Emissions Reduction Modelling



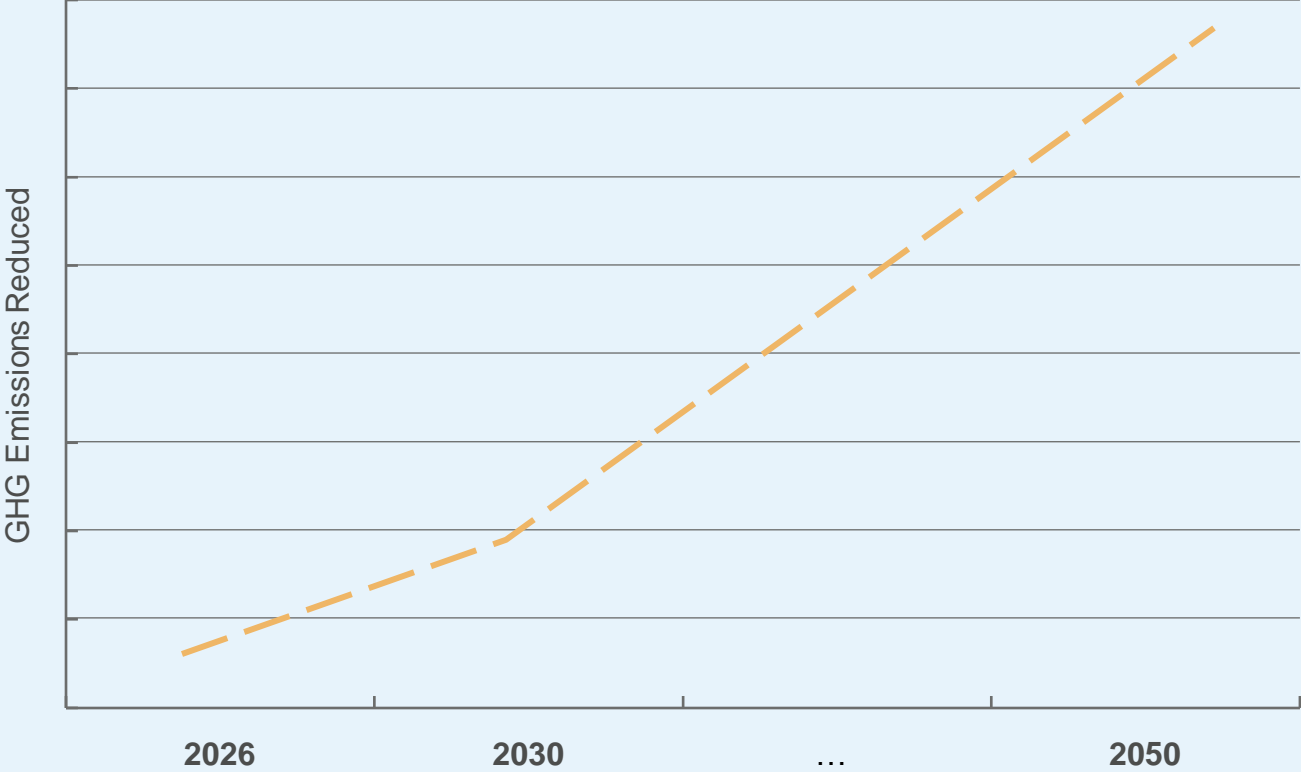
GHG REDUCTION MEASURES

Cumulative GHG emissions reductions were modelled for three milestone years in the PCAP: 2026, 2030, and 2050.

SL-CLEAR GHG Emissions Reduction Modelling

INDIVIDUAL MEASURES

Five individual measures were modelled for the PCAP and each is anticipated to be part of a CPRG Implementation Grant



GHG REDUCTION MEASURES

Cumulative GHG emissions reductions were modelled for three milestone years in the PCAP: 2026, 2030, and 2050.

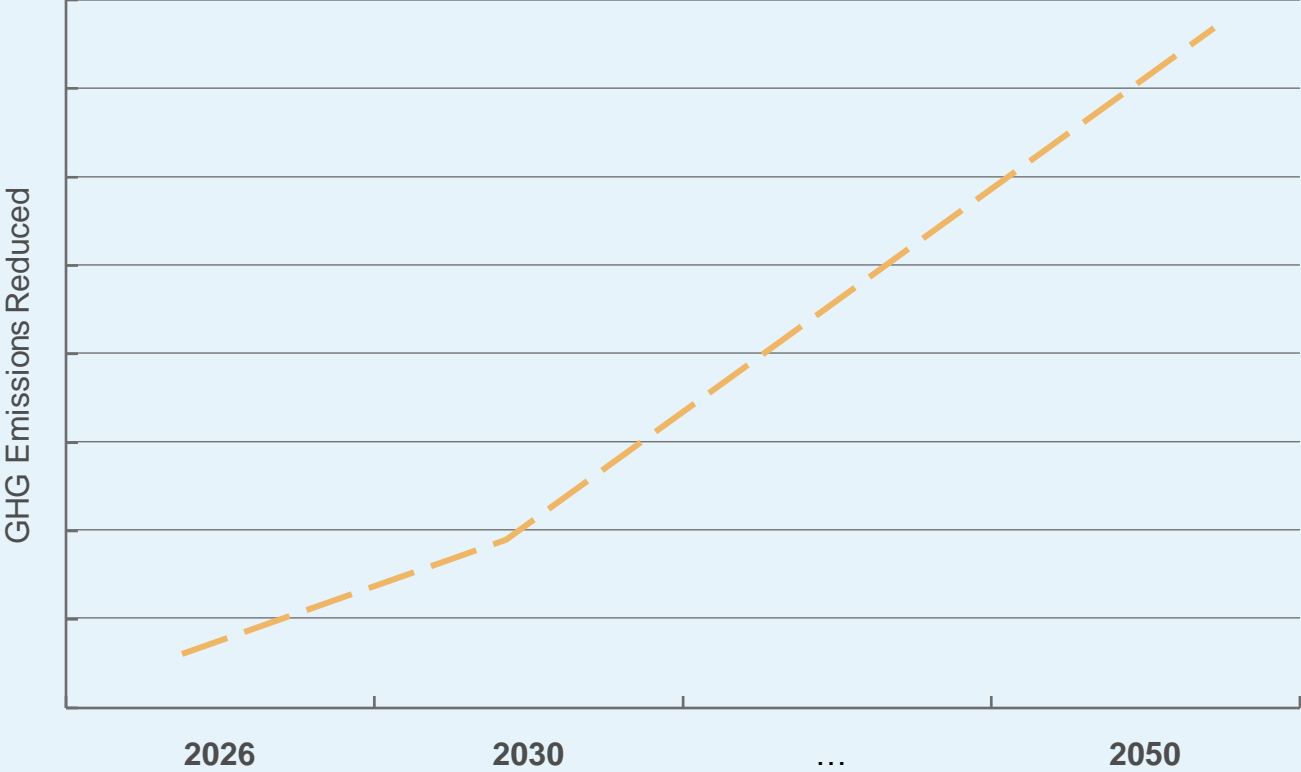
SL-CLEAR GHG Emissions Reduction Modelling

INDIVIDUAL MEASURES

Five Individual measures were modelled for the PCAP and each is anticipated to be part of a CPRG Implementation Grant

GROUPED MEASURES

Other measures were grouped into broader categories for joint modelling GHG modelling for the PCAP



GHG REDUCTION MEASURES

Cumulative GHG emissions reductions were modelled for three milestone years in the PCAP: 2026, 2030, and 2050.



PUBLIC SURVEY RESULTS

Engagement Efforts: SL-CLEAR PCAP



Jurisdictional Partners and Stakeholders



Environmental Justice Committee



Online Engagement and Survey

Engagement Efforts: SL-CLEAR PCAP



Jurisdictional Partners and Stakeholders



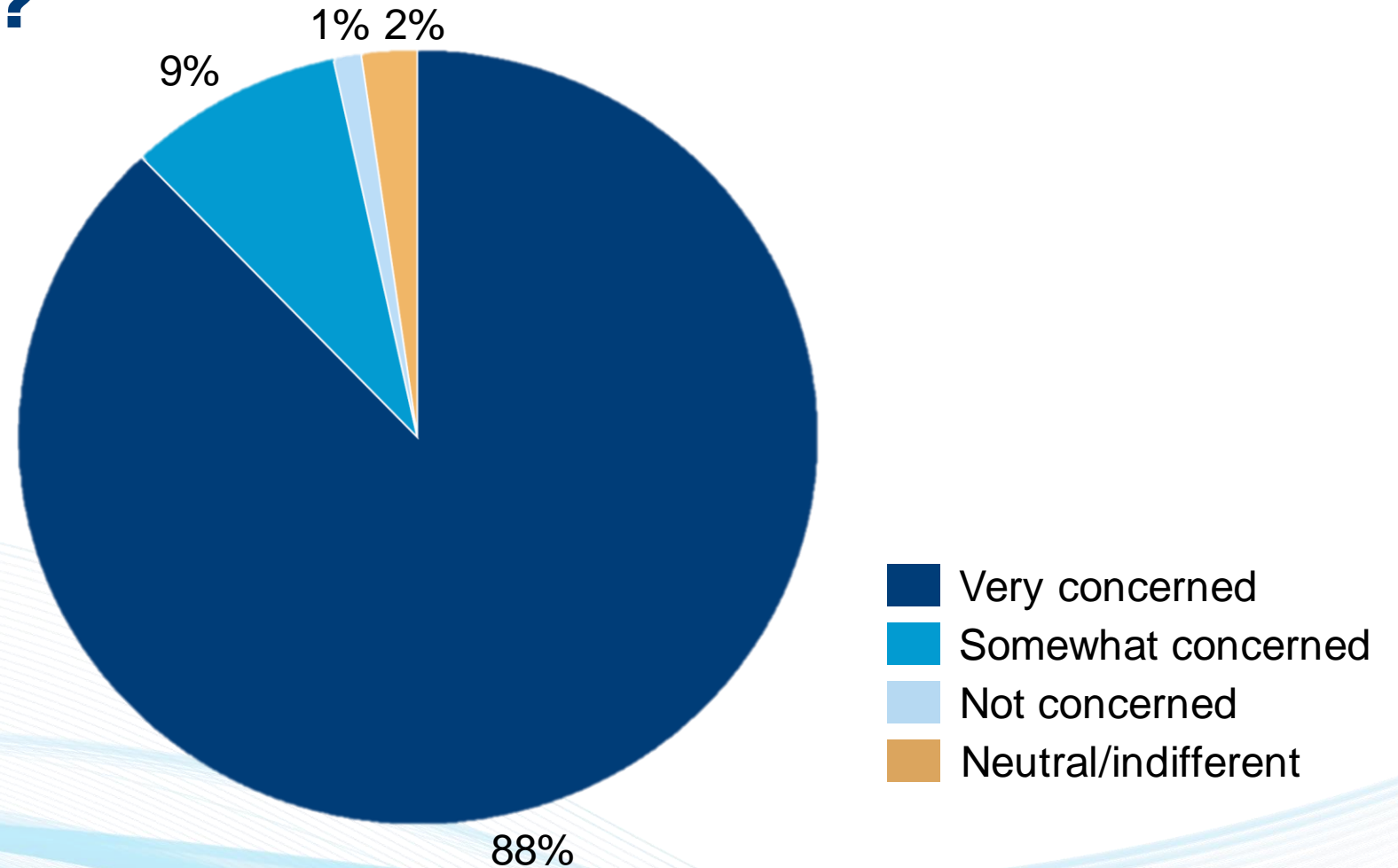
Environmental Justice Committee



Online Engagement and Survey

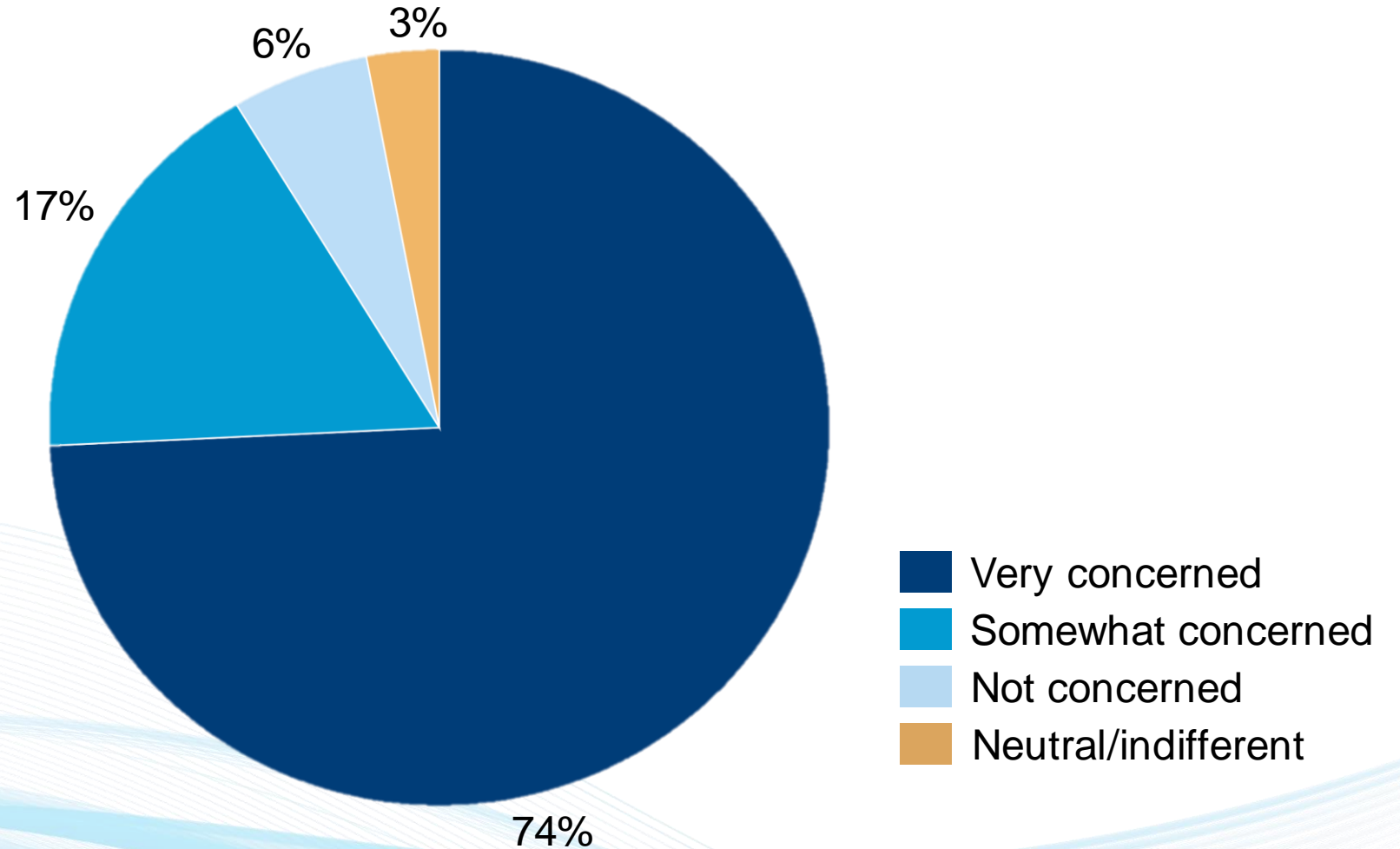
PUBLIC SURVEY

How concerned are you with air pollution and related health impacts?



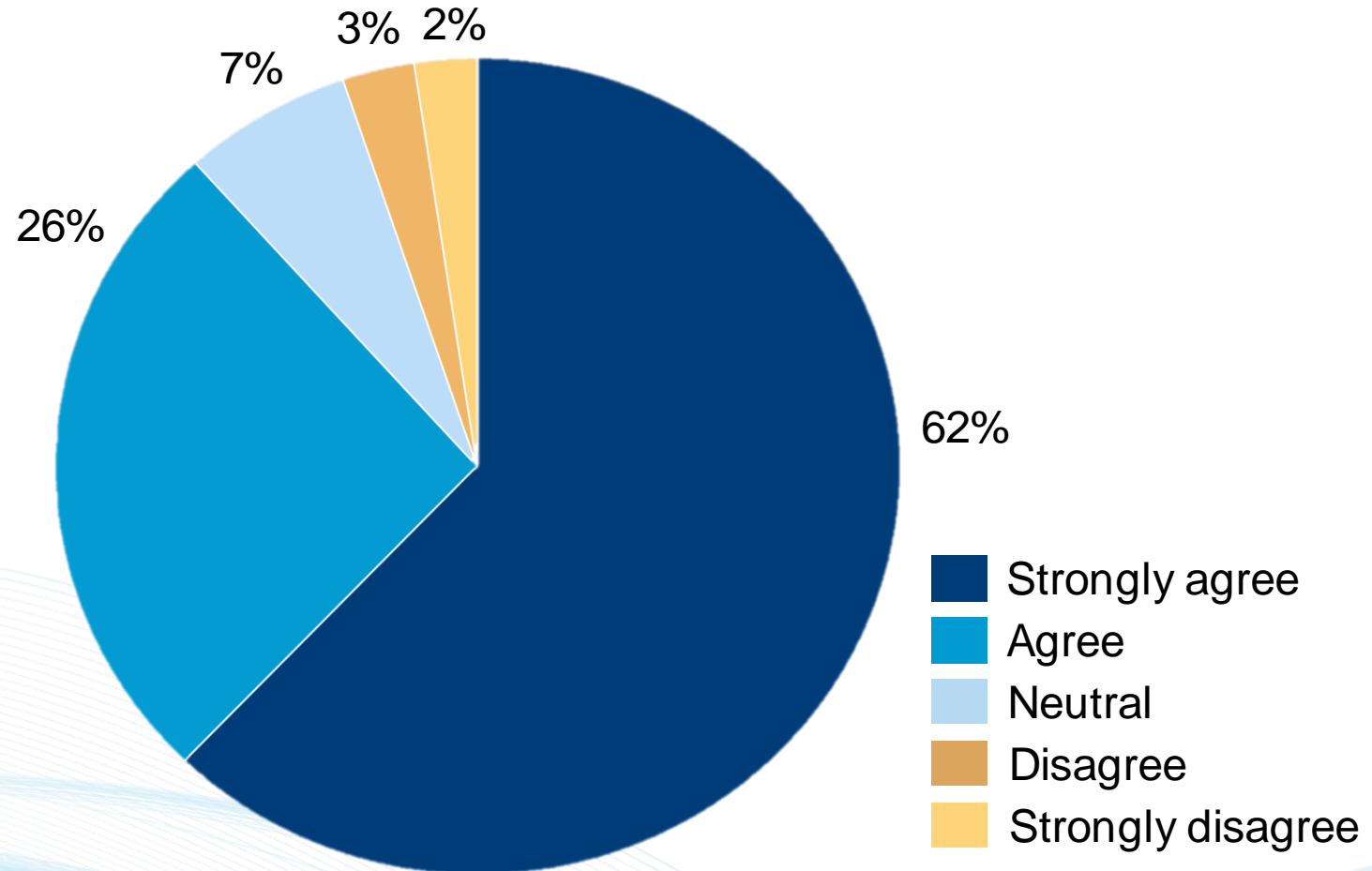
PUBLIC SURVEY

How concerned are you with climate change?



PUBLIC SURVEY

Are there alternative technologies that produce less air pollution...?



PUBLIC SURVEY

Attitudes toward technologies to reduce air pollution

	Familiarity (very and somewhat) %	Attitude (very positive and positive) %	Most cited barrier
EVs	92	70	Too expensive (60%)
Electric bikes	86	79	It's not practical for my situation (42%) Safety concern (38%)
Solar panels	91	87	Too expensive (57%)
Heat pumps	52	58	Lack of knowledge (43%) Too expensive (34%)

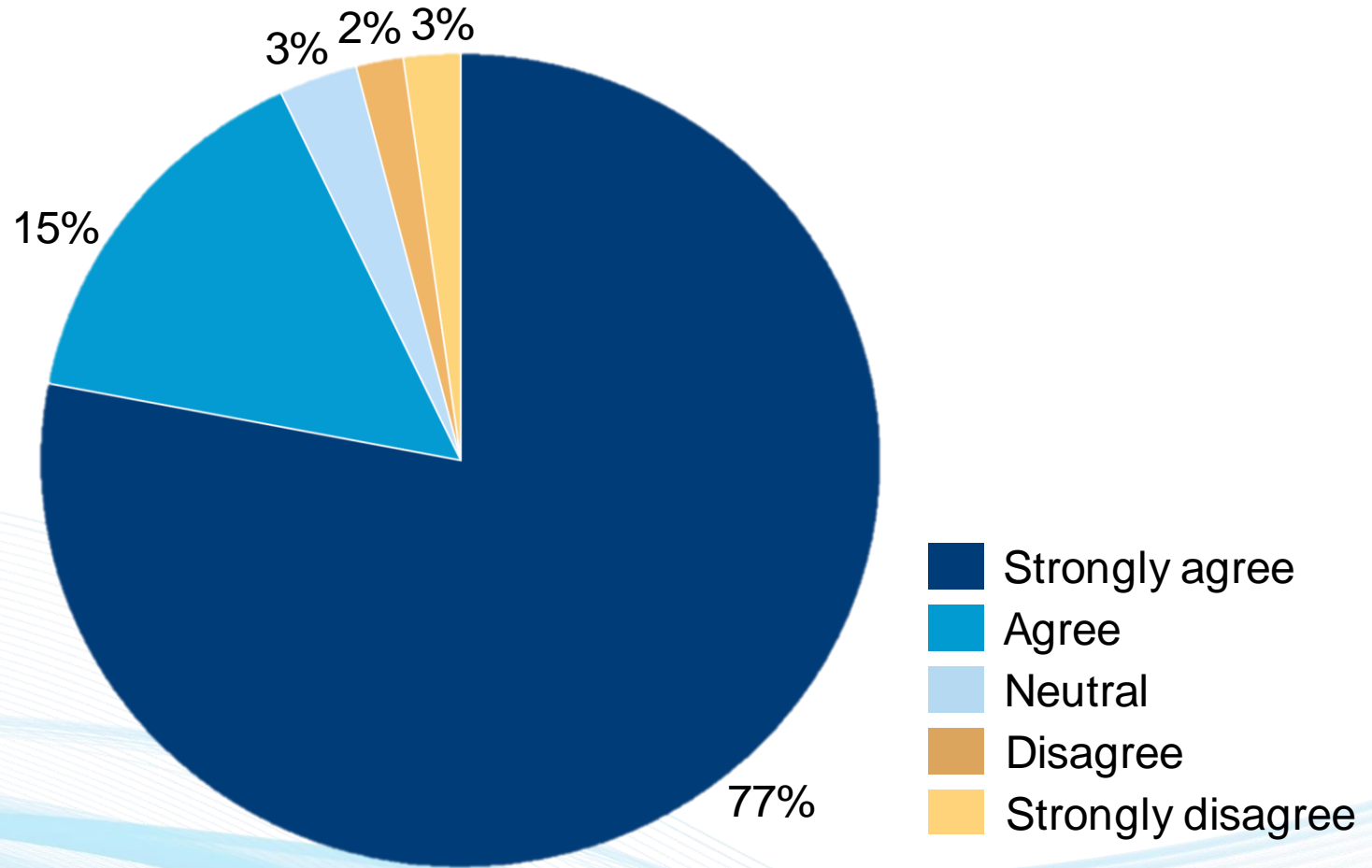
PUBLIC SURVEY

Do you support clean energy and clean air dollars from the Federal Inflation Reduction Act being directed toward...

	Strongly support %	Support %	Total supportive %
Residents	50	36	86
Local Governments and public infrastructure	57	34	91
Businesses and industry	35	33	68
Public schools and universities	52	36	88

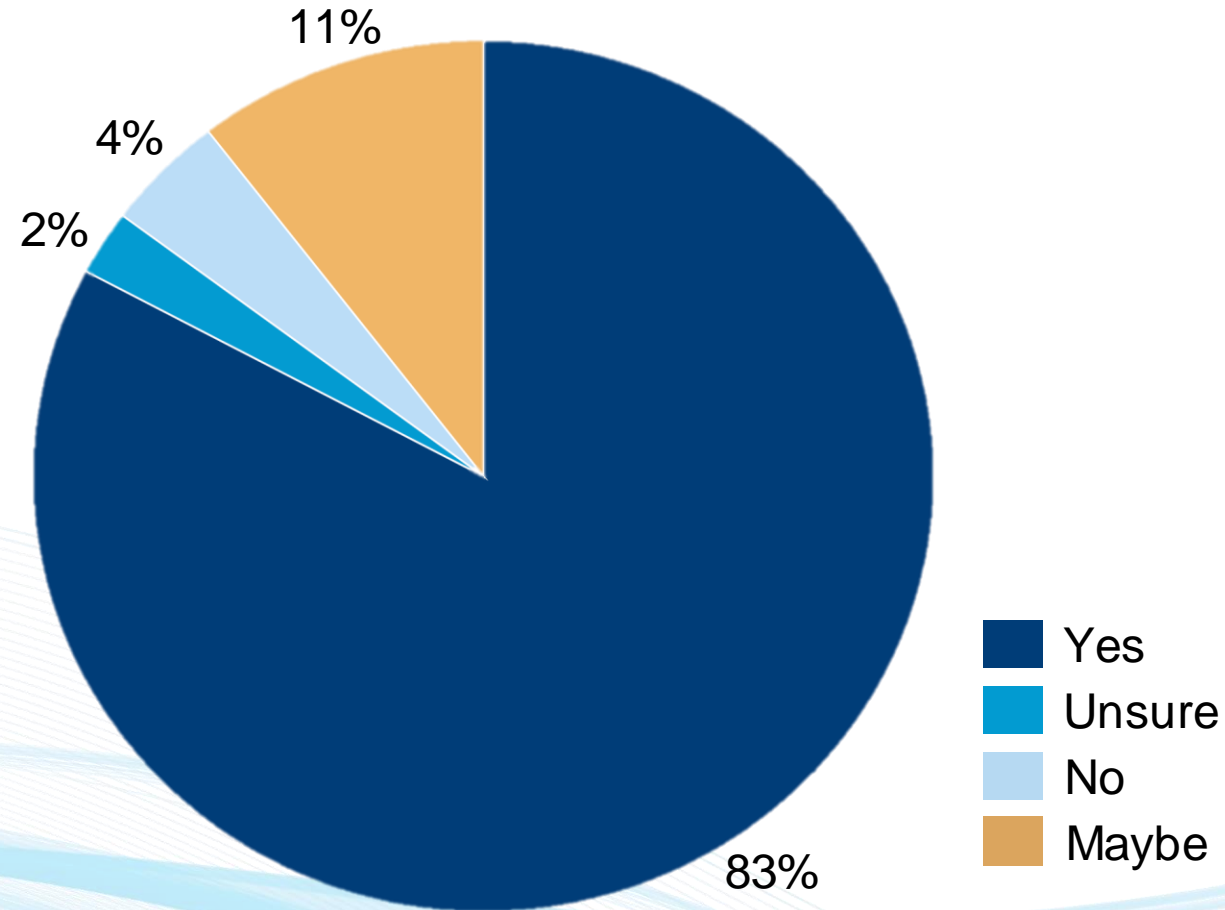
PUBLIC SURVEY

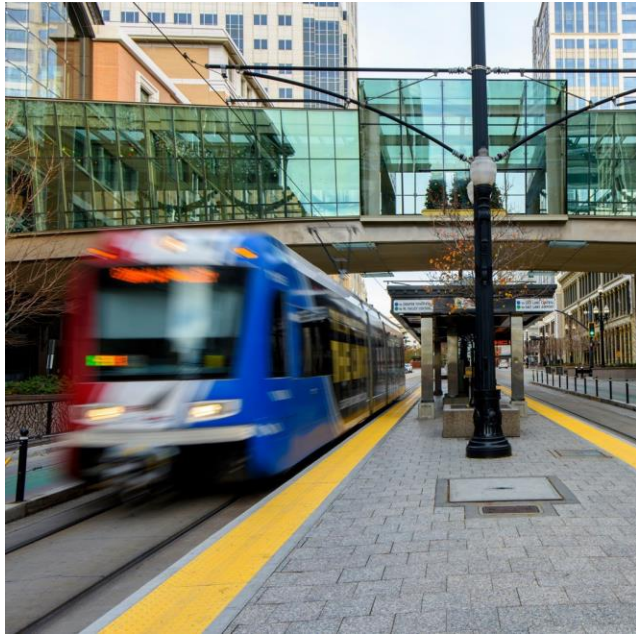
Should local governments be investing Federal money in technologies and practices that reduce air pollution?



PUBLIC SURVEY

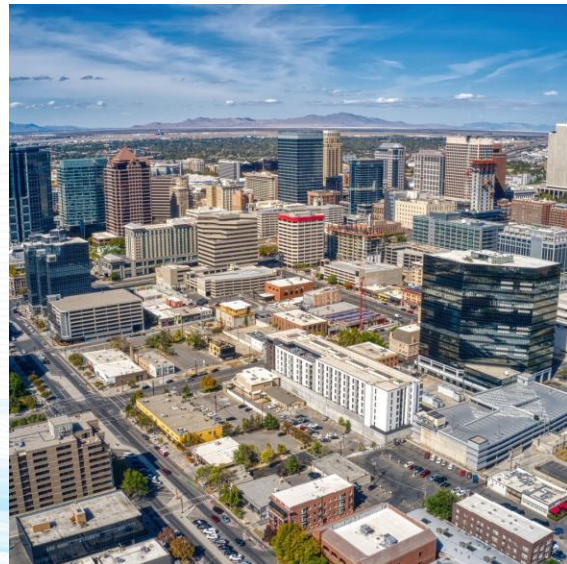
Would you like to see clean air and clean energy investments in your neighborhood?





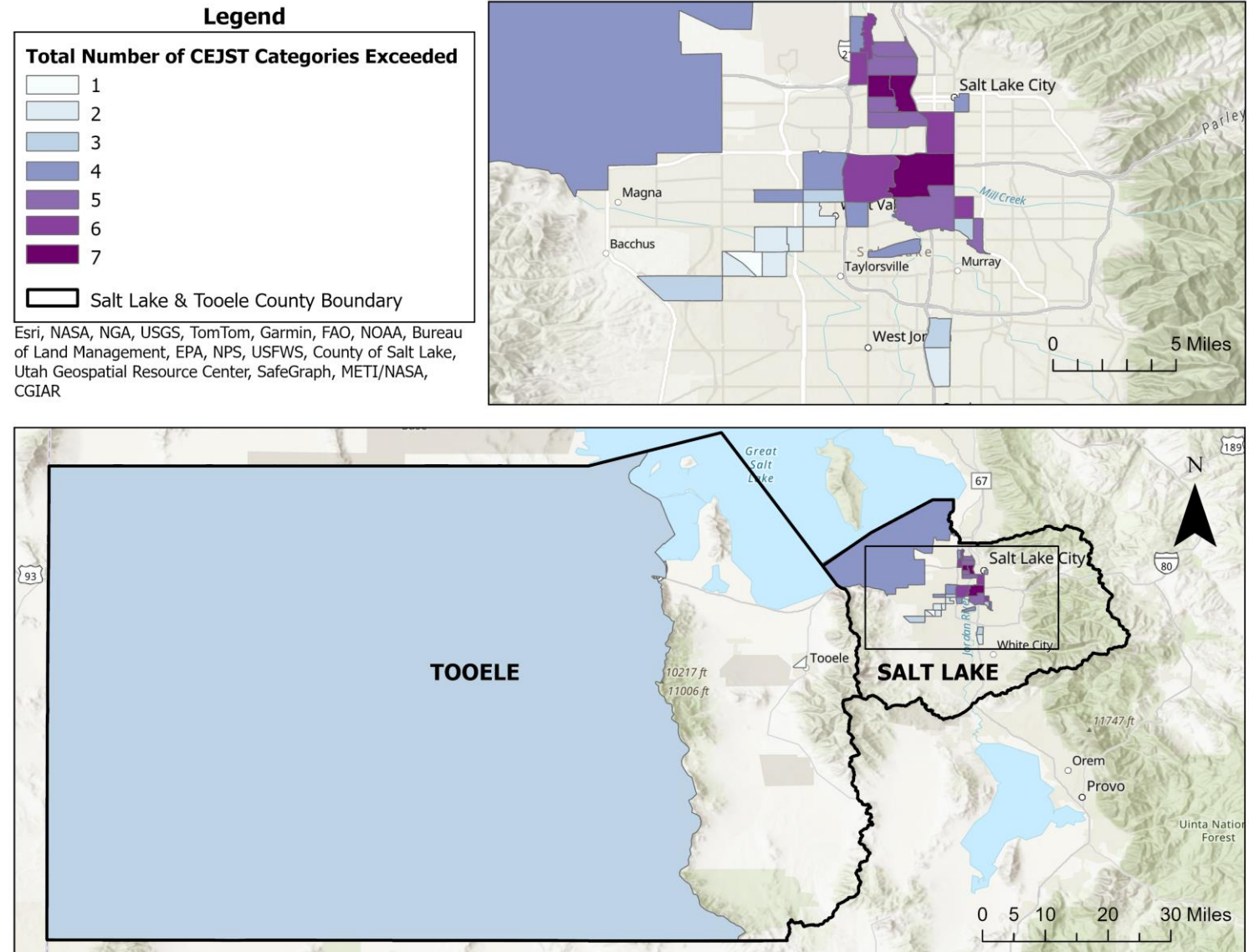
Environmental Justice (EJ) Committee

Low-Income and Disadvantaged Communities (LIDAC)



LOW-INCOME AND DISADVANTAGED COMMUNITIES

- Communities are highlighted as “disadvantaged” on CEJST if they are (1) at or above the threshold for one or more environmental, climate, or other burdens, and (2) at or above the thresholds for an associated socioeconomic burden.
- Disadvantaged census tracts in the Salt Lake and Tooele Counties face burdens in 7 of the 8 categories



LOW-INCOME AND DISADVANTAGED COMMUNITIES

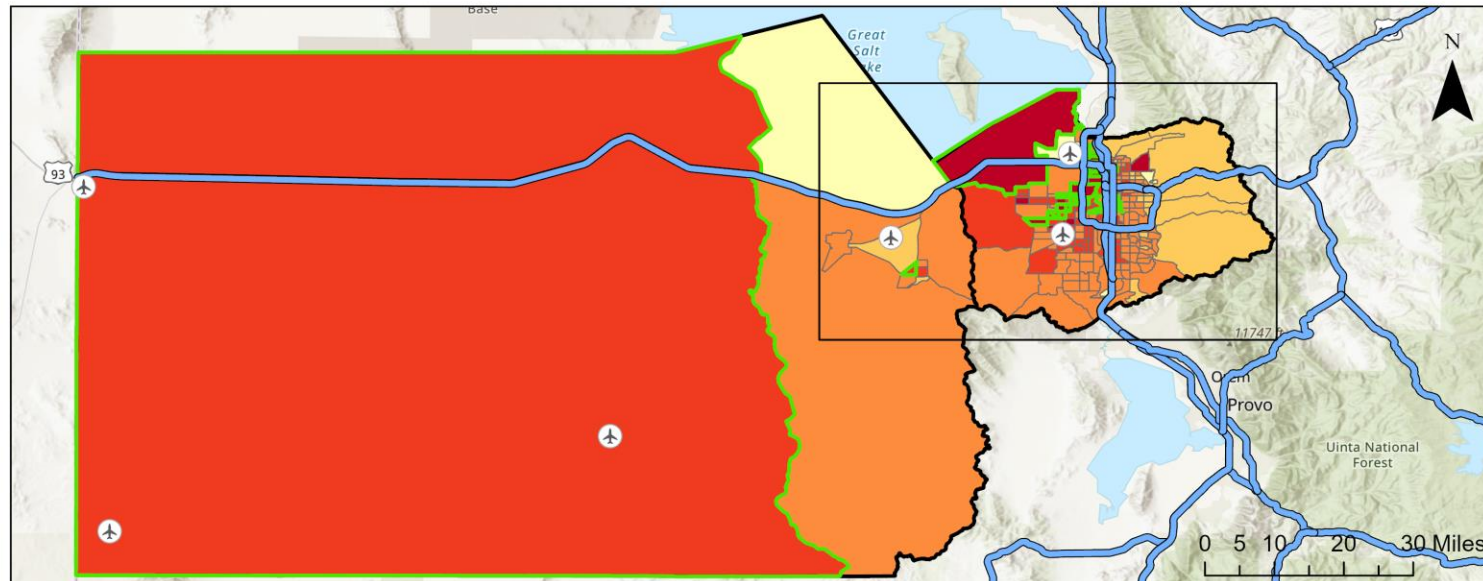
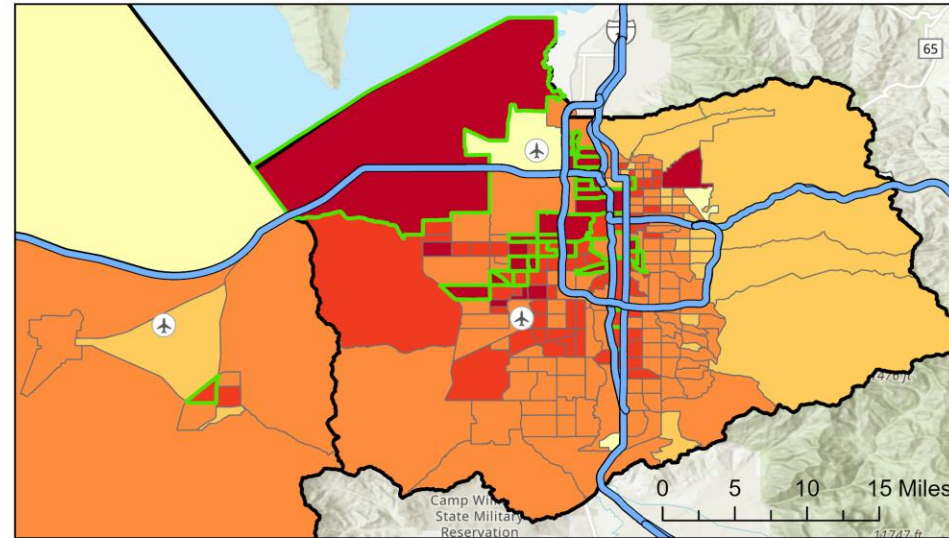
Legend

Current Asthma among Adults Aged 18 Years or Older

- Less than or equal to 40th percentile
- 40th - 60th percentile
- 60th - 80th percentile
- 80th - 90th percentile
- Greater than 90th percentile

- Airport Locations
- Interstate and US Highways
- Salt Lake & Tooele County Boundary
- LIDAC Identified by CEJST

Esri, TomTom, Garmin, FAO, NOAA, USGS, Bureau of Land Management, EPA, County of Salt Lake, Utah Geospatial Resource Center, SafeGraph, METI/NASA, NPS, USFWS, CGIAR





LIDAC: Environmental Justice Resident Committee



Purpose

- Community engagement in the plan development
- Opportunity to incorporate community priorities into plans
- Increased community awareness of GHG emission reduction measure benefits
- Increased capacity building for future engagement

First meeting January 10

LOW-INCOME AND DISADVANTAGED COMMUNITIES

Environmental Justice Resident Committee: Priorities

- **Public transportation:** faster and more frequent routes
- **Carpool strategies**
- **Mitigate pollution:** from freeway expansions, refineries, and inland port
- **Green space:** for community building, indigenous sacred site, and for mitigation of pollution and heat
- **Renewable electrification and electric appliances:** vouchers or incentive programs, eco bikes to generate electricity on campus, schools, and stations
- **Solar alternatives:** for the westside in partnership with the Goshute Nation
- **Green jobs:** for the westside residents
- **Education:** on environmental issues



CPRG Implementation Grants

SL-CLEAR Priority Sectors



Buildings



Electricity



Natural and Working Lands



Transportation

EPA CPRG: Key Deliverables

**Priority
Climate
Action Plan
("PCAP")**

Due March 1, 2024

**Implementation
Grant Proposals**

Due April 1, 2024

**Comprehensive
Climate Action
Plan
("CCAP")**

Due August 4, 2025
*Two years from grant
award date*

**Status
Report**

Due August 4, 2027
*Four years from grant
award date*

EPA CPRG: Implementation Grants

Eligible Applicants

**State Government
Departments and Agencies**

**Local Government
Departments and Agencies**

**Tribes and Tribal
Consortiums**

**Coalition of Eligible
Applicants**

EPA CPRG: Implementation Grants

Other municipal entities such as regional transit authorities, public housing authorities, port authorities, water sanitation, and waste districts, public school districts, and flood authorities **may be eligible to apply** if they meet the below criteria and can provide documentation proving that:

- They constitute a public body created by or pursuant to State law, and
- They are accountable to municipal or state units of government

EPA CPRG: Implementation Grants

Similarly, **state entities** other than state agencies, departments, and other executive branch level offices are eligible to apply if:

- They constitute a public body created by or pursuant to state law and;
- They are accountable to the state level government.



CPRG Implementation Grants

SL-CLEAR Priority Sectors



Buildings



Electricity



Natural and Working Lands



Transportation



CPRG Implementation Grants

SL-CLEAR Priority Sectors



Buildings



Electricity



Natural and Working Lands



Transportation



CPRG Implementation Grants

SL-CLEAR Priority Sectors



Buildings



Electricity



Natural and Working Lands



Transportation

Utah Renewable Communities (URC) Coalition application led by Salt Lake City

- Coalition of 18 Utah communities partnering with Rocky Mountain power to design a new renewable energy program
- Will offer customers a choice to supplement their current energy mix with additional clean energy at a minimal cost increase (net-100% by 2030)
- Without an EPA grant, projected to cost an additional \$2 - \$7 per month on average for the typical household
- Enabled by 2019 state law – the Utah Community Renewable Energy Act
- The Utah Renewable Communities (URC) interlocal cooperative agency was formed in July 2021



**UTAH
RENEWABLE
COMMUNITIES**

100% Committed to Clean Energy

Utah Renewable Communities (URC) Coalition application led by Salt Lake City

- Funding to acquire initial ~200 MW of solar (or other clean equivalent) energy
- + up to four energy navigator positions in parts of the state with Federally-designated LIDAC communities
- Funding will help mitigate the risk of customers exiting the program and allow the program to acquire more renewable energy faster at a lower cost to participants
- By 2030: Around 1.2million metric tons of CO₂e reduced
- By 2050: Around 5million metric tons CO₂e reduced
- ~\$45 million (Tier D)



UTAH
RENEWABLE
COMMUNITIES

100% Committed to Clean Energy



CPRG Implementation Grants

SL-CLEAR Priority Sectors



Buildings



Electricity



Natural and Working Lands



Transportation



CPRG Implementation Grants

SL-CLEAR Priority Sectors



Buildings



Electricity



Natural and Working Lands



Transportation

Beehive Emission Reduction Plan



CPRG Implementation Grants

SL-CLEAR Priority Sectors



Buildings



Electricity



Natural and Working Lands



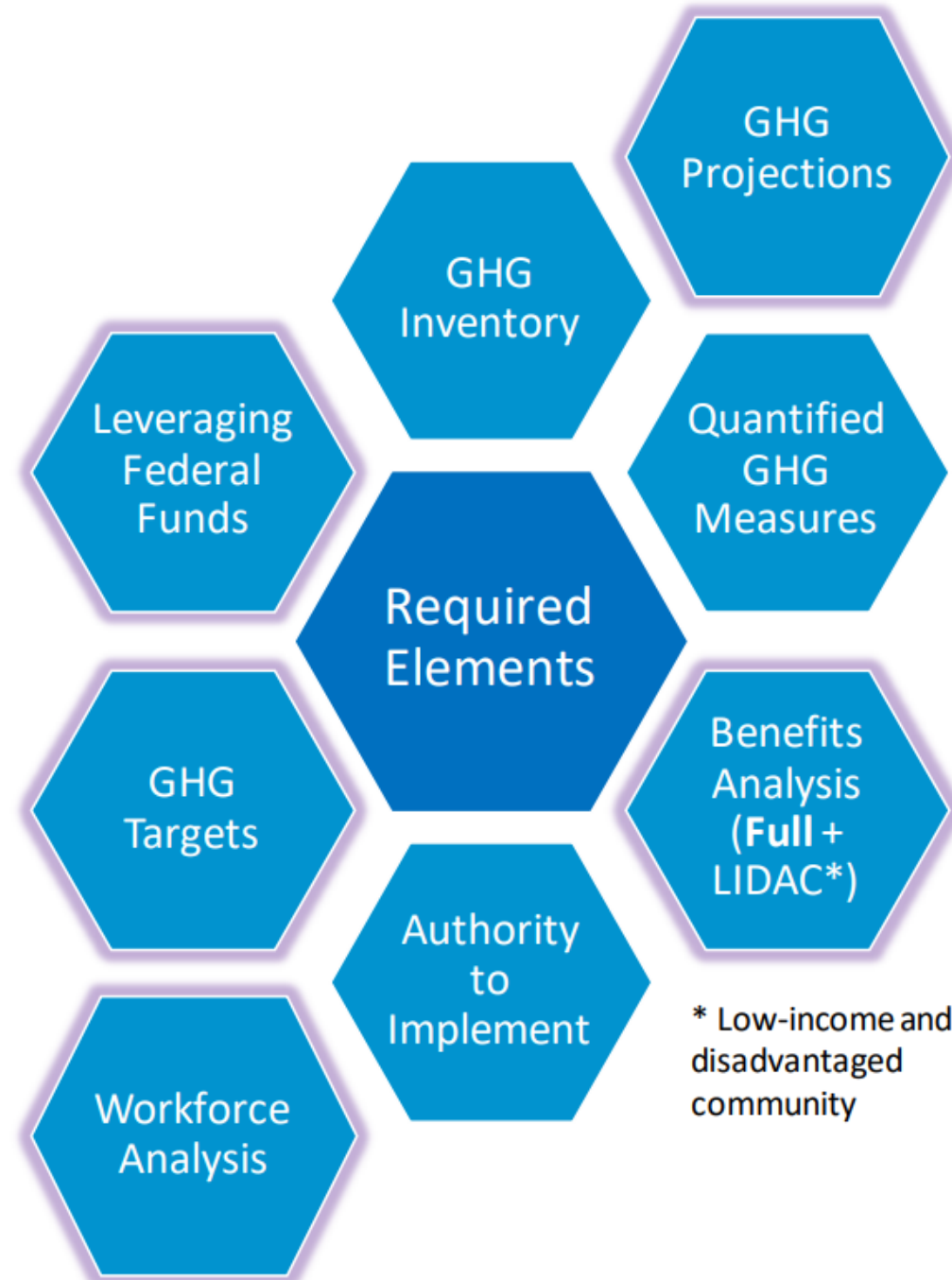
Transportation

Looking Ahead

COMPREHENSIVE CLIMATE ACTION PLAN (CCAP)



Comprehensive Climate Action Plan



- Due 2 years from the date of award for states and metro areas (summer 2025) and at close of grant for tribes and territories
- Covers GHG reduction measures across **all significant sources/sinks and sectors**
- Establishes near-term **and long-term** GHG emission reduction targets
- Adds additional required analyses to support robust implementation



Partners and Stakeholders Meeting

February 16, 2024

