

SALT LAKE CITY
DOG GUARDIAN POLICIES
Better trained animals & better stewardship



1 Existing Framework

Background, Key Issues, SLC Policies, Existing Parks, National Comparison

2 Models

Voice & Tag Program, Fee Program, Limited Hours, Volunteer Roles

3 Next Steps

Enforcement, Tag & Certification, Adaptive Reuse and Land Acquisition



KEY ISSUES



Meeting demand

Non compliance

Habitat conservation

Water quality

User conflicts

Development costs

Funding sources

FRAMEWORK

Background
Key Issues
SLC Policies

Existing Parks
Comparison

MODELS

NEXT STEPS

EXISTING DOG LAWS

3.50.240: regulations for public property adjacent to event routes

8.04.070: dog license; required when; application and fees

8.04.080: dog or cat license; tag requirements

8.04.090: dog and cat license; exemptions

8.04.100: dog or cat license; revocation procedures

8.04.320: impoundment; authorized when

8.04.340: impoundment; holding period; notice to owner; disposition of animals

8.04.352: impound fees for voluntary relinquishment by owner

8.04.356: sterilization required

8.04.370: animal nuisances designated; penalty

8.04.380: female dogs in heat

8.04.390: animals running at large

8.04.400: dogs on chains on unenclosed premises

8.04.410: animals attacking persons and animals

8.04.420: fierce, dangerous, vicious animals

8.04.510: issuance of misdemeanor citations; notice of violations

8.05.010: regulation of vicious dogs

8.05.020: control of vicious dogs

8.05.030: offending vicious dogs

8.05.040: penalties for violation

8.05.050: determination, seizure, impoundment, and disposition of vicious dogs

12.04.190: guide dog

15.08.070: interference with animals or fowl

15.08.060: business activities

15.10.060: dog off leash and on leash trails and areas

15.24.090: dogs prohibited

17.04.160: dogs; permit requirements

17.04.170: dogs; prohibited in designated areas

FRAMEWORK

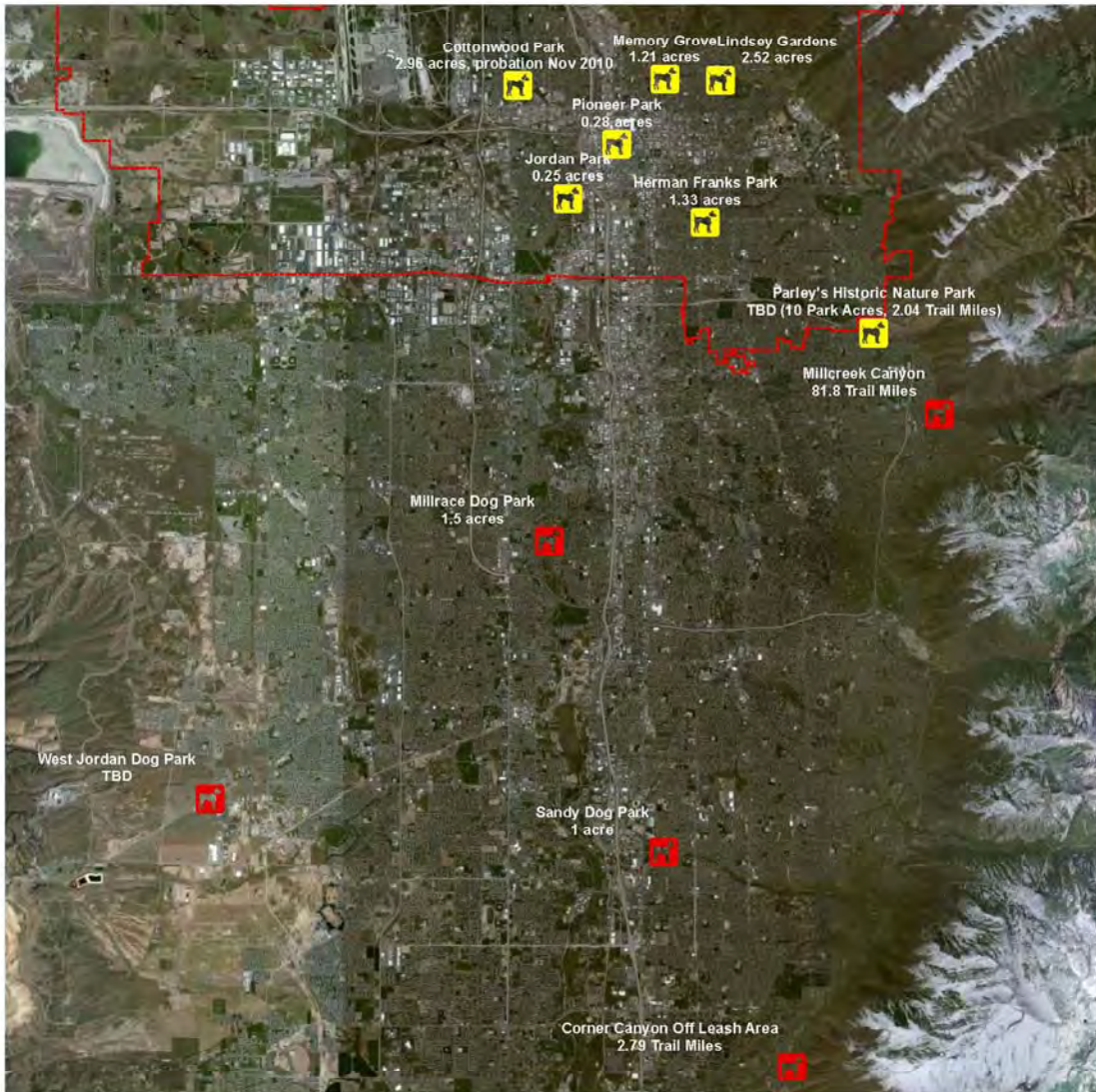
Background
Key Issues
SLC Policies

Existing Parks
Comparison

MODELS

NEXT STEPS

SEVEN EXISTING PARKS



Cottonwood Park

Herman Franks

Jordan Park

Lindsey Garden Park

Parley's Historic Nature Park

Pioneer Park

Memory Grove

FRAMEWORK

Background
Key Issues
SLC Policies

Existing Parks
Comparison

MODELS

NEXT STEPS

	Population	Number of Off-Leash Parks	Fenced Dog Park acreage	Off leash areas total acreage	Enforcement Agency
Boulder, CO	97,385	4	9	10.25	Animal Control/Park Rangers
Salt Lake City	181,743	7	4.82	21.61	Animal Services
Boise, ID	206,000	4	3	13	2 f/t officers hired
Portland, OR	583,776	32	65	65	Animal Control + 1 f/t Parks & Rec Officer
Seattle, WA	608,660	11	19.5	25.3	2 Animal Control Officers + 2 Parks & Rec Officers
Austin, TX	790,390	11	16	672*	Animal Control
Calgary	1,071,515	149	4	3,162	Animal Services
Salt Lake County	1,033,910	3	6.39	6.39	Animal Services

*Austin includes total park/open space acreage for off leash areas, leading to this overestimated number.

FRAMEWORK

Background
Key Issues
SLC Policies

Existing Parks
Comparison

MODELS

NEXT STEPS

	Population	Number of Off-Leash Parks	Fenced Dog Park acreage	Off leash areas total acreage	Enforcement Agency
Boulder, CO	97,385	4	9	10.25	Animal Control/Park Rangers
Salt Lake City	181,743	7	4.82	21.61	Animal Services
Boise, ID	206,000	4	3	13	2 f/t officers hired
Portland, OR	583,776	32	65	65	Animal Control + 1 f/t Parks & Rec Officer
Seattle, WA	608,660	11	19.5	25.3	2 Animal Control Officers + 2 Parks & Rec Officers
Austin, TX	790,390	11	16	672*	Animal Control
Calgary	1,071,515	149	4	3,162	Animal Services
Salt Lake County	1,033,910	3	6.39	6.39	Animal Services

*Austin includes total park/open space acreage for off leash areas, leading to this overestimated number.

FRAMEWORK		MODELS	NEXT STEPS
Background	Existing Parks		
Key Issues	Comparison		
SLC Policies			



MODELS

- 1. Voice & Tag Program**
- 2. Fee Program**
- 3. Limited Hours**
- 4. Volunteer Roles**

VOICE & TAG PROGRAM

Boulder's Process

1. Watch 10 minute video about voice & sight standards
2. Register dog with Open Space and Mountain Parks
3. Agree to terms and pay one time \$15 fee
4. Display tag in all voice and sight tag areas



FRAMEWORK

MODELS

NEXT STEPS

Voice & Tag Program
Fee Program
Limited Hours

Volunteers
Summary

VOICE & TAG PROGRAM



Boulder's Costs & Results

Cost: \$66,100* to initiate & 7,500 hours of staff time

Fees collected for tags totaled approximately \$300,000, through August 31, 2010

Over **25,000 people have registered** and most (86%) of off-leash dogs had tags visibly displayed

*does not include ongoing administration costs

Boulder's Feedback

No "teeth"- **enforcement is difficult** and there is no test to ensure the dogs can follow the commands

Staff did **not detect any increase in dog guardians' ability to use voice control** after implementing the program

Boulder Staff does not believe people are watching training video and suggest a **testing requirement**

Fee only covers the cost of the tag, not enforcement

FRAMEWORK

MODELS

Voice & Tag Program
Fee Program
Limited Hours

Volunteers
Summary

NEXT STEPS

FEE PROGRAM

Local Example

Taylorsville contracts West Valley Animal Control to administer and enforce a permit program for Millrace Dog Park. The park requires an permit tag- \$10 resident and \$25 non resident. The owner must have a current pet license to purchase the tag and must renew annually.

The program initially had animal control officers regularly patrolling and issuing citations for not having the tag. People caught on after a few months and regular patrols are no longer necessary. The citations and the purchase of tags provides funds for maintaining and improving the park.

National Examples

Long Island, NY: \$13 fee for dogs over 25 pounds every time they take their dogs to the dog park

Montgomery Parks: an annual fee of \$40 and an additional \$5 per dog to use all five statewide parks.

Madison, WI: Requires a permit and fee to use all parks. The permits cost \$27 annually and then an extra six dollars for each additional dog.

Virginia Parks: an annual fee of \$10 dollars and an additional \$5 per dog



FRAMEWORK

MODELS

NEXT STEPS

Voice & Tag Program
Fee Program
Limited Hours

Volunteers
Summary

LIMITED HOURS

Taylorville Millrace Park

The park has **limited hours and closes during and after inclement weather**. Conditions are assessed on a daily basis for re-opening. The park is open Monday, Wednesday, Thursday & Friday 8 am to 10 pm. Closed Tuesday and Saturday at 4 pm, reopens Sunday at 4 pm.

Issues: maintenance but solves the problem by closing at will

Boise's Pilot Program

In addition to four off-leash parks, Boise has a pilot program that allows off-leash dogs in **unfenced portions of approved parks during early morning and late evening hours**, adding an additional 21.53 acres for off-leash use.

Issues: Enforcement during non-off-leash hours

FRAMEWORK

MODELS

NEXT STEPS

Voice & Tag Program
Fee Program
Limited Hours

Volunteers
Summary

VOLUNTEER ROLES

Austin

The Volunteer Advisory Committee has eleven members serving two year terms. They hold public meetings once a month and act as a liaison between the public and Parks department.

Seattle

Volunteer stewards from Citizens for Off-Leash Areas are assigned to parks to educate the public and “keep the peace.” Stewards can inform officers about violations.

Boulder

The Parks Board manages a volunteer program to help with rule enforcement that is still in the recruitment phase.

Atlanta

Atlanta outlines a grass roots process for a community to organize and present a dog park proposal to the city. The proposal must include the community’s plans for all maintenance and monitoring of the park.

FRAMEWORK

MODELS

NEXT STEPS

Voice & Tag Program
Fee Program
Limited Hours

Volunteers
Summary

	Tag & Permit Program	Limited Hours	Public Process/ Volunteers	Enforcement Program
Boulder, CO	Yes		Yes	Yes
Boise, ID		Yes		Yes
Portland, OR		Yes		Yes
Seattle, WA			Yes	Yes
Atlanta, GA			Yes	
Austin, TX			Yes	
Taylorsville, UT	Yes	Yes		
Salt Lake City Recommendations	Future Consideration	Future Consideration	Future Consideration	Future Consideration

FRAMEWORK

MODELS

Voice & Tag Program
 Fee Program
 Limited Hours

Volunteers
 Summary

NEXT STEPS

NEXT STEPS

for Salt Lake City



- 1. Public Input Schedule**
- 2. Adaptive Reuse & Land Acquisition**
- 3. Tag & Certification Program**
- 4. Enforcement Program**

2012 PUBLIC INPUT SCHEDULE

June 27th

7PM - Wasatch Hollow Community Council (Anderson-Foothill Library)

June 28th

6PM - Bonneville Hills Community Council (Anderson-Foothill Library)

July 18th

7:30PM – Westpointe Community Council (Day-Riverside Library)

August 15th

7PM - East Bench Community Council (Anderson Library)

August 22nd

7PM – Poplar Grove Community Council (Pioneer Precinct)

August 23rd

6:30PM – Fairpark Community Council (Northwest Multipurpose Center)

September 19th

6:30PM – Capital Hill Community Council (New Senate Building Capitol Copper Room)



FRAMEWORK

MODELS

NEXT STEPS

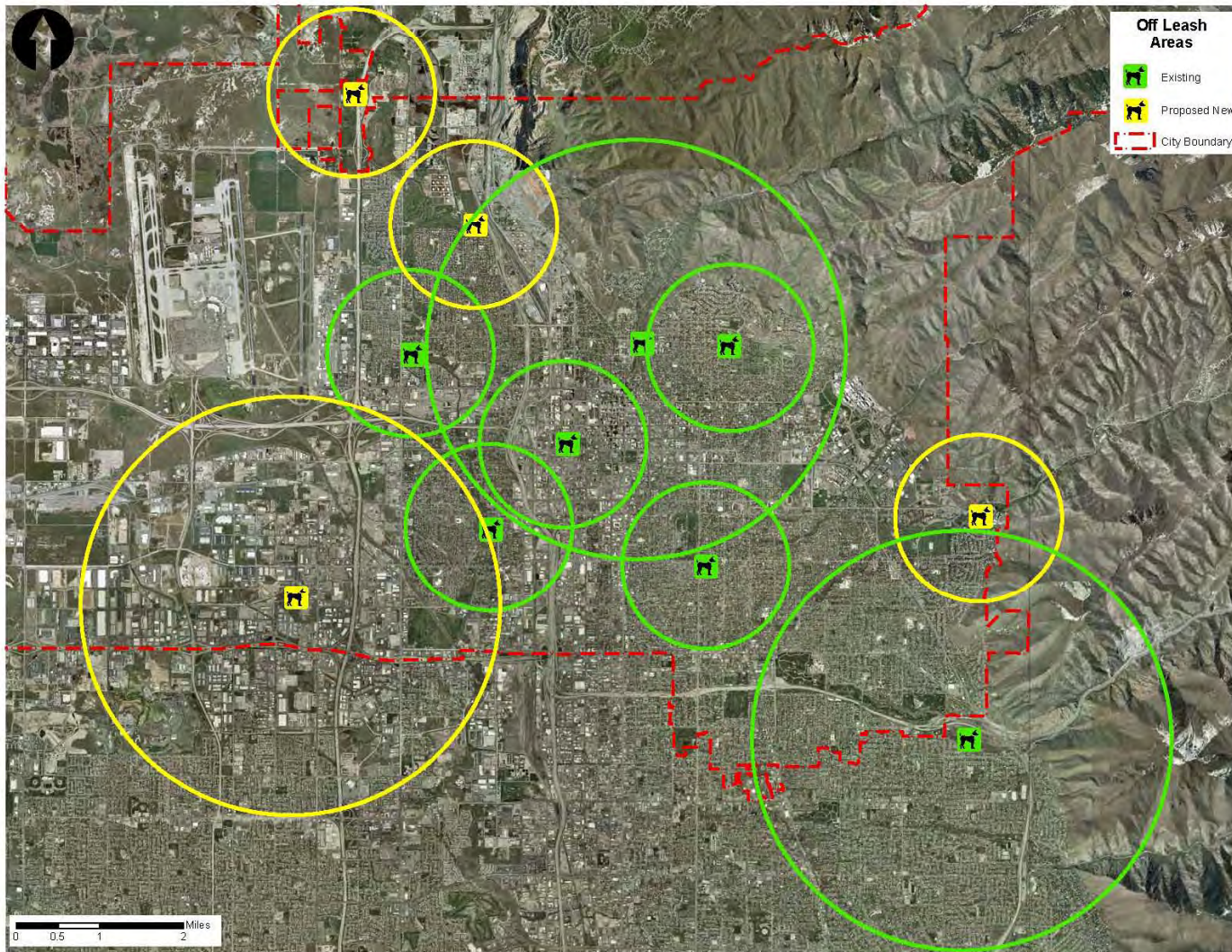
Public Input Schedule

Adaptive Reuse & Land Acquisition

Tag & Certification Program

Enforcement Program

ADAPTIVE REUSE & LAND ACQUISITION



Considerations...

Parcel size

Parcel availability

Space in existing parks

Community support

Development costs

Funding sources

FRAMEWORK

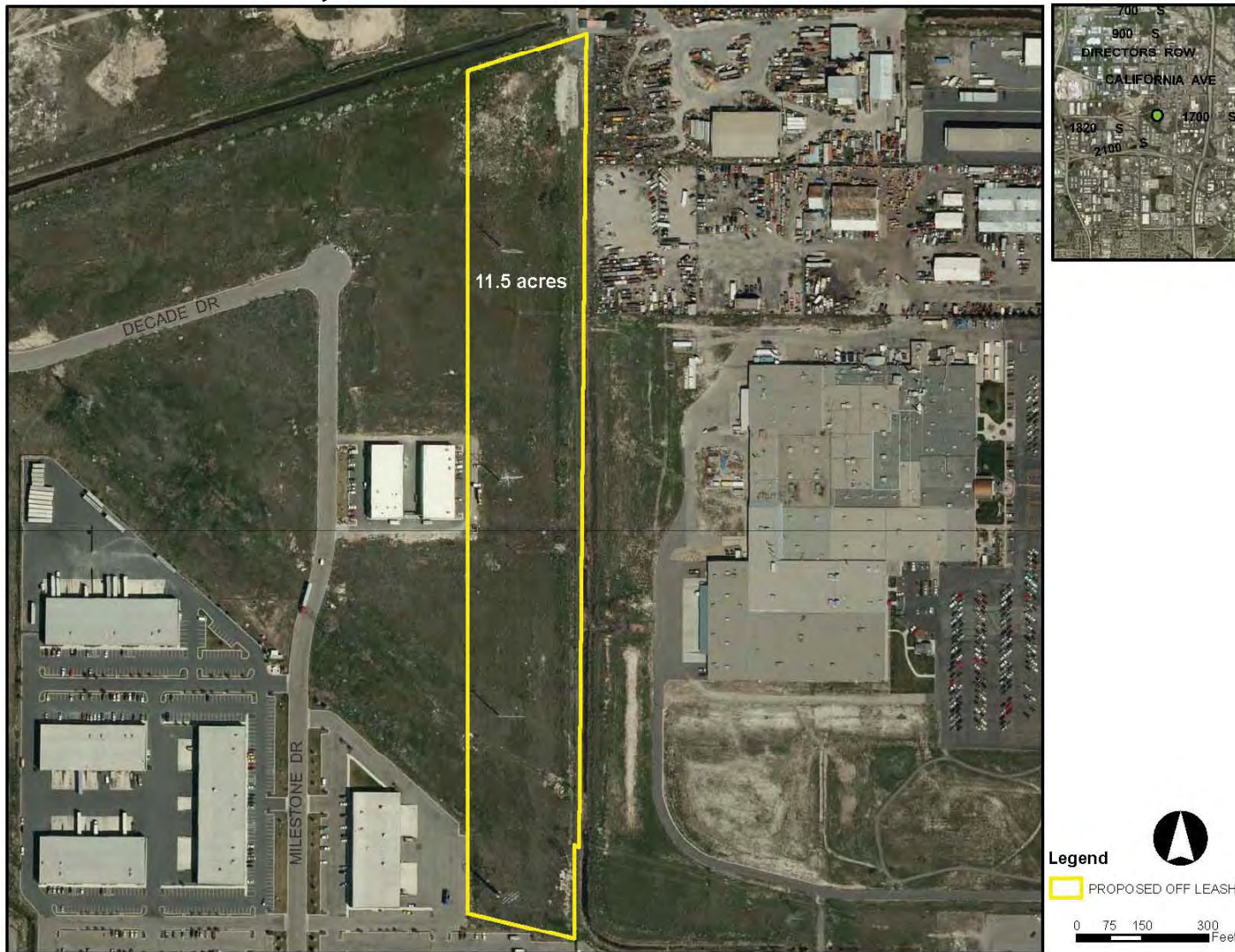
MODELS

NEXT STEPS

Public Input Schedule
Adaptive Reuse & Land Acquisition
Tag & Certification Program
Enforcement Program

NEW JOINT USE OFF LEASH AREA SCENARIO 1

Rocky Mountain Power Corridor



FRAMEWORK

MODELS

NEXT STEPS

- Public Input Schedule
- Adaptive Reuse & Land Acquisition
- Tag & Certification Program
- Enforcement Program

NEW DOG PARK DEVELOPMENT SCENARIO 2

15 Acre Parcel for Sale



FRAMEWORK

MODELS

NEXT STEPS


- Public Input Schedule
- Adaptive Reuse & Land Acquisition
- Tag & Certification Program
- Enforcement Program

NEW DOG PARK DEVELOPMENT SCENARIO 3

Rosewood Park



Legend

 PROPOSED OFF LEASH

0 50 100 200 Feet

FRAMEWORK

MODELS

NEXT STEPS

- Public Input Schedule
- Adaptive Reuse & Land Acquisition
- Tag & Certification Program
- Enforcement Program

NEW DOG PARK DEVELOPMENT SCENARIO 4

Rotary Glen



FRAMEWORK

MODELS

NEXT STEPS



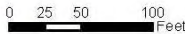
- Enforcement Program
- Tag & Certification Program
- Adaptive Reuse & Land Acquisition
- Public Input Schedule

NEW DOG PARK DEVELOPMENT SCENARIO 5

Fairmont Park



Legend


 PROPOSED OFF LEASH


FRAMEWORK

MODELS

NEXT STEPS

- Public Input Schedule
- Adaptive Reuse & Land Acquisition
- Tag & Certification Program
- Enforcement Program

CREATION PROCESS

a refined process for creating SLC off leash area

	Community Initiated Off Leash Area		City Initiated Off Leash Area	
	Community Responsibilities	City Responsibilities	Existing Park	New Park
Initial site request is made by public or staff				
Site selection and preliminary approval of site by public services director based on staff review	X	X	X	X
Present proposal to Parks, Natural Lands, Urban Forestry and Trails Board for recommendation	X	X	X	X
Year long usage survey	X		X	
Petition of support from park users and surrounding residents	X		X	X
Letters of support from the local Community Council and affected stakeholder groups	X		X	X
Present findings of survey and proposal to Parks, Natural Lands, Urban Forestry and Trails Board for recommendation	X	X	X	X
Board recommendation conveyed by Parks and Public Lands Director to Public Service Department Director for approval		X	X	X
Site concept development	X	X	X	X
Request improvement funds through CIP, and management and maintenance funds in annual budget cycle		X	X	X
Park implemented upon funding approval and allocation by Council		X	X	X

FRAMEWORK

MODELS

NEXT STEPS

Public Input Schedule
Adaptive Reuse & Land Acquisition
Tag & Certification Program
Enforcement Program

TAG & CERTIFICATION PROGRAM

1. Tag Program: Neighborhood Parks

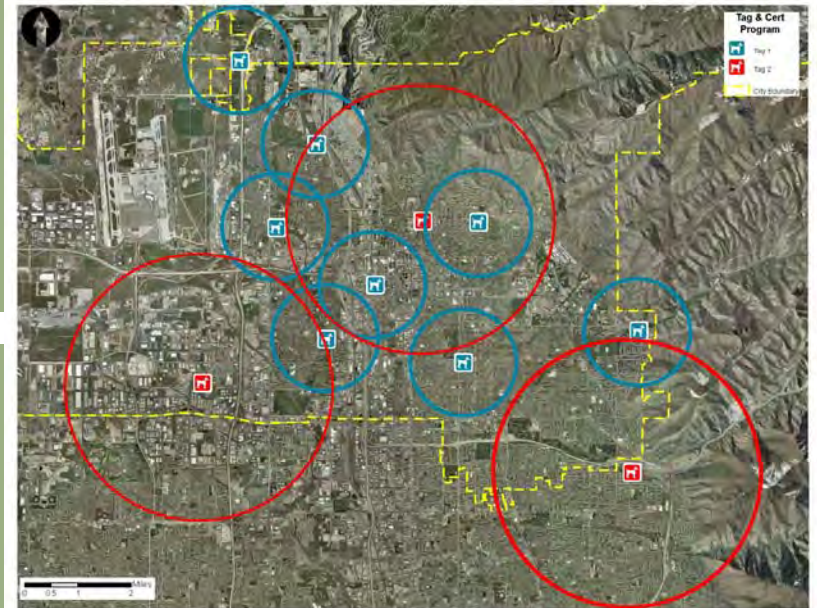
A general tag could be required for use of all fenced off leash areas to help fund the maintenance and development of dog parks

- Owner would pay an annual fee (with a low income option) to the City to receive the tag.
- Tag would allow guardian and pet to use all fenced off leash areas

2. Tag Program: Regional City Parks (Rocky Mountain Power & PHNP)

A tag and training certification could be required for use of all specially designated off leash areas to help fund maintenance and development of these areas and ensure dogs are trained to respond to voice commands

- Partner with Animal Control and dog trainers for a training class and third party certification.
- Owner and pet would take and pass the training class and pay an annual fee (with a low income option) to the City to receive the tag.
- Partner with Animal Control and implement SLC Park Ranger program for enforcement of both tag programs.



FRAMEWORK

MODELS

NEXT STEPS

Public Input Schedule
Adaptive Reuse & Land Acquisition
Tag & Certification Program
Enforcement Program

SLC ENFORCEMENT PROGRAM

Goal:

Provide a consistent park presence, educate the public, and enforce park rules and city code at all city parks, including dog parks. This can provide:

- A friendly face of city parks
- Enforcement of City laws and park rules in parks and open spaces
- Person-to-person educational experiences
- On site security and public safety promoting appropriate park use
- On site monitoring and protection of resources

Options:

Park ranger program
Police enforcement

FRAMEWORK

MODELS

NEXT STEPS

Public Input Schedule
Adaptive Reuse & Land Acquisition
Tag & Certification Program
Enforcement Program

QUESTIONS?

