

Site 3: Facilities Maintenance Access Area

Rocky Mountain Power, Salt Lake County, and Salt Lake City use this driveway to access their respective facilities when necessary. Proposed improvement projects at this location include the following:

- regrading and revegetating the abandoned house site,
- constructing a new turn-around and parking area for maintenance vehicles,
- constructing new primary and secondary trail connections, and
- installing split-rail and restoration fencing where appropriate.

Site 4: North Meadow Area

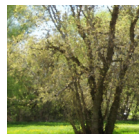
This is the most secluded portion of WHP. Proposed improvement projects at this location include the following:

- constructing secondary trails through the different habitat types,
- removing invasive species and trash/debris,
- installing split-rail and restoration fencing where appropriate, and
- revegetating disturbed areas with native species.

Site 5: South Access Area (7:00 pm)

This is the second of three primary access locations for visitors. Proposed improvement projects at this location include the following:

- installing both split-rail and restoration fencing where appropriate,
- revegetating existing turf and nonnative areas with native plant species,
- removing invasive species,
- improving existing primary and secondary trail conditions with grading and drainage facilities, and



- installing a new access gate for pedestrians.

Site 6: Nature Play Area

This area will be the primary focus for nature play activities. Proposed improvement projects at this location include the following:

- installing split-rail and restoration fencing where appropriate;
- developing a defined nature play area with tree-stump rounds, lean-to structures, tree branches, logs, boulders, and a shade structure;
- installing erosion-control and drainage facilities as necessary; and
- constructing new primary and secondary trail connections.

Site 7: East Access Area

This is the primary access location for community members who live along the east side of WHP. Proposed improvement projects at this location include the following:

- installing split rail and restoration fencing where appropriate,
- revegetating disturbed and nonnative areas with native species,
- regrading and realigning the primary access trail, and
- constructing new primary and secondary access trails.

**PLEASE JOIN US
FOR PUBLIC WORKSHOP NO. 4**

**Tuesday, July 29, 2014
Anderson-Foothill Library
6:00–8:00 p.m.**

**SLC PPL Project Contact: Lewis Kogan
801-972-7828 / lewis.kogan@slcgov.com**

Wasatch Hollow Preserve Riparian Restoration Project **SALT LAKE CITY CORPORATION, PARKS AND PUBLIC LANDS DIVISION**



Public Workshop No. 3
July 2, 2014
6:00–8:00 PM

Wasatch Hollow Preserve
1631 E 1700 S
Salt Lake City

WELCOME!

Welcome to the Wasatch Hollow Preserve (WHP) Riparian Restoration Project Public Workshop. We are glad you could attend and look forward to receiving your input on this important effort. This is the third in a series of four public workshops that will be held during the 6-month planning process to design and implement substantial elements from the 2011 Comprehensive Restoration, Use, and Management Plan approved by Salt Lake City (City). The plan describes a series of implementation projects for improvements to this 10-acre natural preserve. You can download a copy of the plan and other project information by going to the City's website and the Parks and Public Lands webpage at: <http://www.slcparcs.com>. Simply click on the Wasatch Hollow Preserve link for more information.

This workshop is designed to provide you with a better understanding of the design of specific improvement solutions. We suggested meeting with members of the public onsite at Wasatch Hollow Preserve to visit key improvement locations and discuss proposed concepts to provide you with a better understanding of the project. During this site visit, you will have the opportunity to ask questions of staff and provide us with your comments and suggestions.

Please take the time to familiarize yourself with the information included in this and previous handouts, and on the attached drawings. Most importantly, let us know your thoughts on the conceptual design plans discussed today. If you have any questions, do not hesitate to ask members of the Project Team; we are here to listen to and answer your questions. Thanks again for participating!

Site Visit Itinerary

We plan to visit seven (7) key improvement sites throughout the WHP property today. These sites are shown on Figure 1, which provides an

overview of proposed improvement projects. The following list identifies the sites and highlights a few of the improvement project solutions.

Site 1: West Access Area (6:00 pm)

This is the location where most members of the public will enter the WHP property. It is also the location where Rocky Mountain Power, Salt Lake County, and Salt Lake City access their respective facilities when necessary. Proposed improvement projects at this location include the following:

- installing both split-rail and restoration fencing where appropriate,
- revegetating existing turf and nonnative areas with native plant species,
- removing invasive species,
- improving existing trail conditions with grading and drainage facilities, and
- installing new access gates for pedestrians and maintenance vehicles where appropriate.

Site 2: Central Meadow Area

This existing meadow area was once the location of a spring and wetland/riparian complex. Proposed improvement projects at this location include the following:

- removing human-made fill to expose the spring and natural topography,
- reconnecting Emigration Creek to its natural floodplain,
- installing a bridge to cross the creek,
- restoring vegetation using native upland and riparian/wetland species, and
- constructing new at-grade and elevated trails where appropriate.



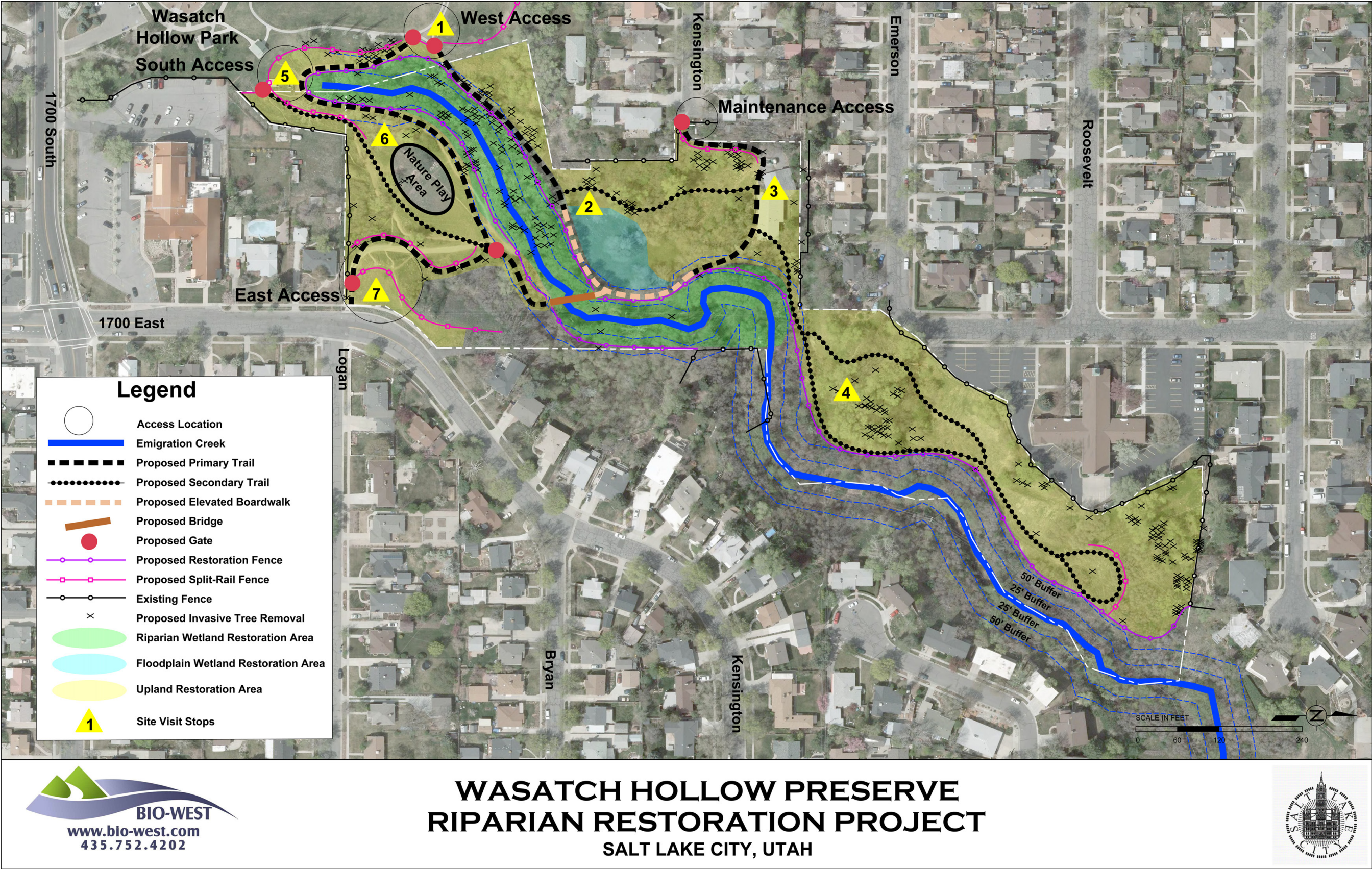


Figure 1. Overview map of Wasatch Hollow Preserve improvement projects.

