

Wasatch Hollow Preserve Riparian Restoration Project

SALT LAKE CITY CORPORATION, PARKS AND PUBLIC LANDS DIVISION



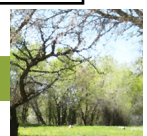
Public Workshop Series I Workshop Response Form

As this design process begins, it is useful to solicit input from Wasatch Hollow Preserve users on improvement projects and priorities. To facilitate your feedback, we have prepared a set of questions for you to consider. Please use this Workshop Response Form to tell us your vision for improvement projects, as well as the priorities that are most important to you. If you need more space, feel free to attach additional sheets to this form. If you need more time, please mail or e-mail this response form to Lewis Kogan, Salt Lake City Parks and Public Lands, 1965 West 500 South, Salt Lake City, Utah, 84104-3511 or lewis.kogan@slc.gov.com, by Friday, May 9, 2014. Thanks again for your participation!

What Proposed Improvement Projects Are Most Important to You?

What Recommendations Do You Have for Specific Improvement Projects?

If You Do Not Mind, Please Provide Us with Your Name and Address (for project updates only):



THANKS AGAIN FOR YOUR PARTICIPATION!

Fold along dotted line

PLACE
STAMP
HERE

**Lewis Kogan
Salt Lake City Parks and Public Lands
1965 West 500 South
Salt Lake City, Utah
84104-3511**

Fold along dotted line

