

Red Butte Creek Oil Release Air Monitoring Journal

Date	Location (Time)	Analyte	Method	Result	GPS Location	Comment		
7/9/10	Miller Park, along Red Butte Creek (1445-1500)	Volatile Organic Compounds (VOCs)	PID	0.0 ppm ¹	40°44'46.37"N, 111°50'48.60"W	~20 yards from outlet from Miller Park, 10 ft above creek		
				0.0 ppm ¹	40°44'46.60"N, 111°50'46.30"W	~50 yards from outlet, on edge of creek		
				0.0 ppm ¹	40°44'47.10"N, 111°50'45.55"W	~75 yards from outlet, 2 ft above creek		
				0.0 ppm ¹	40°44'47.72"N, 111°50'43.65"W	At waterfall on bridge, 12 ft above creek		
		Hydrogen Sulfide (H ₂ S)	QRAEII	0.0 ppm ²	Odors are not detected in this area. No crews working in this area. Crews working in the creek are downstream from this site.			
		Carbon Monoxide (CO)	QRAEII	0.0 ppm				
		Lower Explosive Limit (LEL)	QRAEII	0.0%				
	Confluence of Jordan River and Red Butte Creek (1405-1415)	Volatile Organic Compounds (VOCs)	Photo Ionization Detector (PID)	0.0 ppm ¹	40°44'29.75"N, 111°55'3.68"W	At inlet to Jordan River, 3 ft from water. No odors were detected. Some oil is built up around the barriers. No crews working in this area.		
				Hydrogen Sulfide (H ₂ S)			QRAEII	0.0 ppm ²
				Carbon Monoxide (CO)			QRAEII	0.0 ppm
				Lower Explosive Limit (LEL)			QRAEII	0.0%
	Garden Park Ward, 1140 East Harvard (1515-1530)	Volatile Organic Compounds (VOCs)	Photo Ionization Detector (PID)	0.0-1.0 ppm ¹	40°44'42.01"N, 111°51'29.60"W	At the creek's edge. There were no workers in the creek. Low odor detected by technician.		
				Hydrogen Sulfide (H ₂ S)			QRAEII	0.0 ppm ²
Carbon Monoxide (CO)				QRAEII			0.0 ppm	
Lower Explosive Limit (LEL)				QRAEII			0.0%	

¹ PID readings for VOCs are used as a screening method to determine contaminants typically associated with crude oil. If high levels of VOCs are detected, additional sampling is conducted

² 10ppm Hydrogen Sulfide (ceiling) - NIOSH recommended exposure level

Red Butte Creek Oil Release Air Monitoring Journal

Date	Location (Time)	Analyte	Method	Result	GPS Location	Comment
7/9/10	1100 East Harvard (1505-1515)	Volatile Organic Compounds (VOCs)	Photo Ionization Detector (PID)	0.4 ppm ¹	40°44'42.1"N, 111°51'34.0"W	Sample taken at culvert opening.
		Volatile Organic Compounds (VOCs)	Photo Ionization Detector (PID)	0.0 ppm ¹		North of Harvard where Red Butte Creek goes underneath 1100 East. Low odors detected by technician.
		Hydrogen Sulfide (H ₂ S)	QRAEII	0.0 ppm ²		
		Carbon Monoxide (CO)	QRAEII	0.0 ppm		
		Lower Explosive Limit (LEL)	QRAEII	0.0%		
	Liberty Park (1425-1440)	Volatile Organic Compounds (VOCs)	Photo Ionization Detector (PID)	0.0 ppm ¹	In between 40°44'37.96"N, 111°52'25.29"W and 40°44'38.41"N, 111°52'21.04"W	Sampling along the north side of the lake. No odor was detected by technician.
		Hydrogen Sulfide (H ₂ S)	QRAEII	0.0 ppm ²		
		Carbon Monoxide (CO)	QRAEII	0.0 ppm		
		Lower Explosive Limit (LEL)	QRAEII	0.0%		
	At creek east of 1300 East Harvard (1535-1545)	Volatile Organic Compounds (VOCs)	Photo Ionization Detector (PID)	5.6 ppm ¹	40°44'41.14"N, 111°51'7.03"W	Sample was taken beside the creek along side of the pressure-washing crews. There were several 2-cycle engines running at this time. Odors were detected by technician.
		Hydrogen Sulfide (H ₂ S)	QRAEII	0.0 ppm ²		
		Carbon Monoxide (CO)	QRAEII	0.0 ppm		
		Lower Explosive Limit (LEL)	QRAEII	0.0%		
	1067 Harvard (1515-1530)	Volatile Organic Compounds (VOCs)	Passive Dosimeter	----	40°44'41.62"N, 111°51'38.09"W	Two passive dosimeters were picked up at this residence. One set inside the residence in the main room (NW corner of house). One set outside the residence creekside near a small waterfall in the NW corner of lot by shed. PID reading inside residence was 0.0 and 1.0 outside at the creekside.
		Volatile Organic Compounds (VOCs)	Photo Ionization Detector (PID)	0.0-1.0 ppm ¹		
		Hydrogen Sulfide (H ₂ S)	QRAEII	0.0 ppm ²		
Carbon Monoxide (CO)		QRAEII	0.0 ppm			

Red Butte Creek Oil Release Air Monitoring Journal

Date	Location (Time)	Analyte	Method	Result	GPS Location	Comment
7/9/10	1067 Harvard (1515-1530)	Lower Explosive Limit (LEL)	QRAEII	0.0%	40°44'41.62"N, 111°51'38.09"W	

Weather Conditions for:		K7PB Salt Lake City, UT (AS230)				Elev: 4615 ft; Latitude: 40.73067; Longitude: -111.82667			
Time: (MDT)	Temp. (f)	Dew	Relative	Wind	Wind	Altimeter	Station	Precip	Quality
		Point (f)	Humidity (%)	Direction	Speed (mph)	Setting (inches)	Pressure (inches)	24 hour (inches)	Control
09 Jul 3:49 pm	83	47	28	SE	4G13	29.73	25.098	0.03	OK
09 Jul 3:39 pm	82	47	29	ESE	G13	29.73	25.098	0.03	OK
09 Jul 3:29 pm	84	46	27	SSE	3G13	29.73	25.098	0.03	OK
09 Jul 3:19 pm	84	47	28	SE	3G13	29.73	25.098	0.03	OK
09 Jul 3:09 pm	84	43	24	W	4G13	29.73	25.098	0.03	OK
09 Jul 2:59 pm	82	45	27	WNW	3G17	29.74	25.106	0.03	OK
09 Jul 2:49 pm	80	44	28	SW	4G17	29.75	25.115	0.03	OK
09 Jul 2:39 pm	81	44	27	W	7G17	29.75	25.115	0.03	OK
09 Jul 2:29 pm	82	44	26	WSW	6G13	29.75	25.115	0.03	OK
09 Jul 2:19 pm	83	46	27	W	4G08	29.74	25.106	0.03	OK
09 Jul 2:09 pm	84	46	27	SW	4G04	29.73	25.098	0.03	OK
09 Jul 1:59 pm	84	47	28	SW	2G06	29.72	25.089	0.03	OK

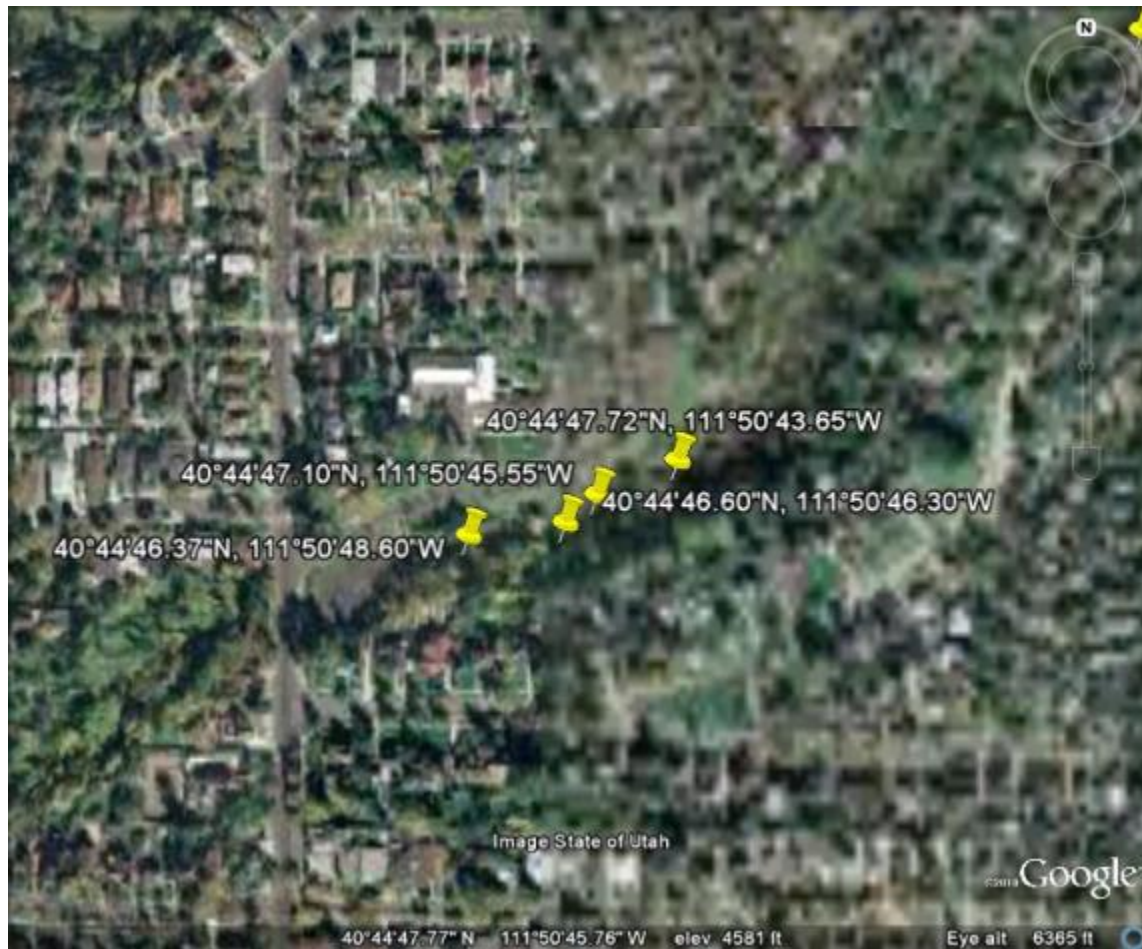
Red Butte Creek Oil Release Air Monitoring Journal

Liberty Park Sample Sites



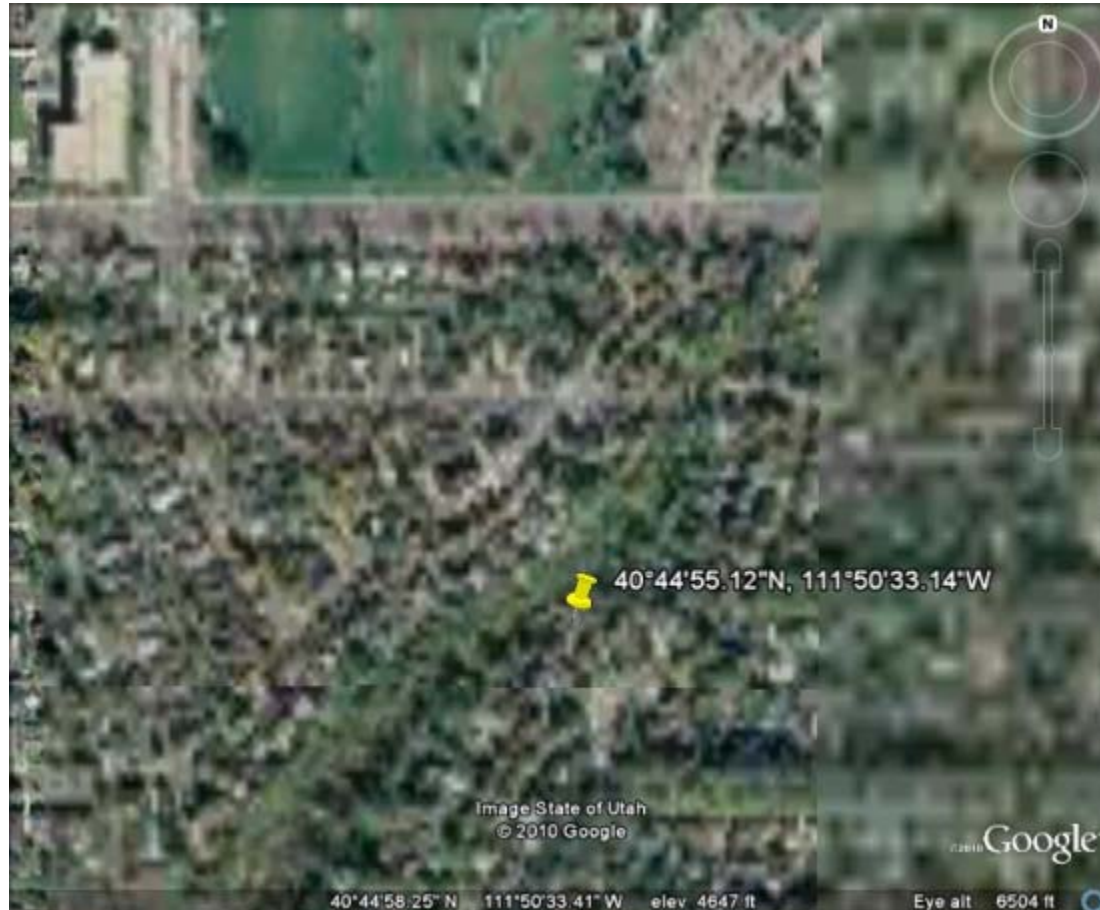
Red Butte Creek Oil Release Air Monitoring Journal

Miller Park Sample Sites



Red Butte Creek Oil Release Air Monitoring Journal

Resident Sample Site at 966 Military



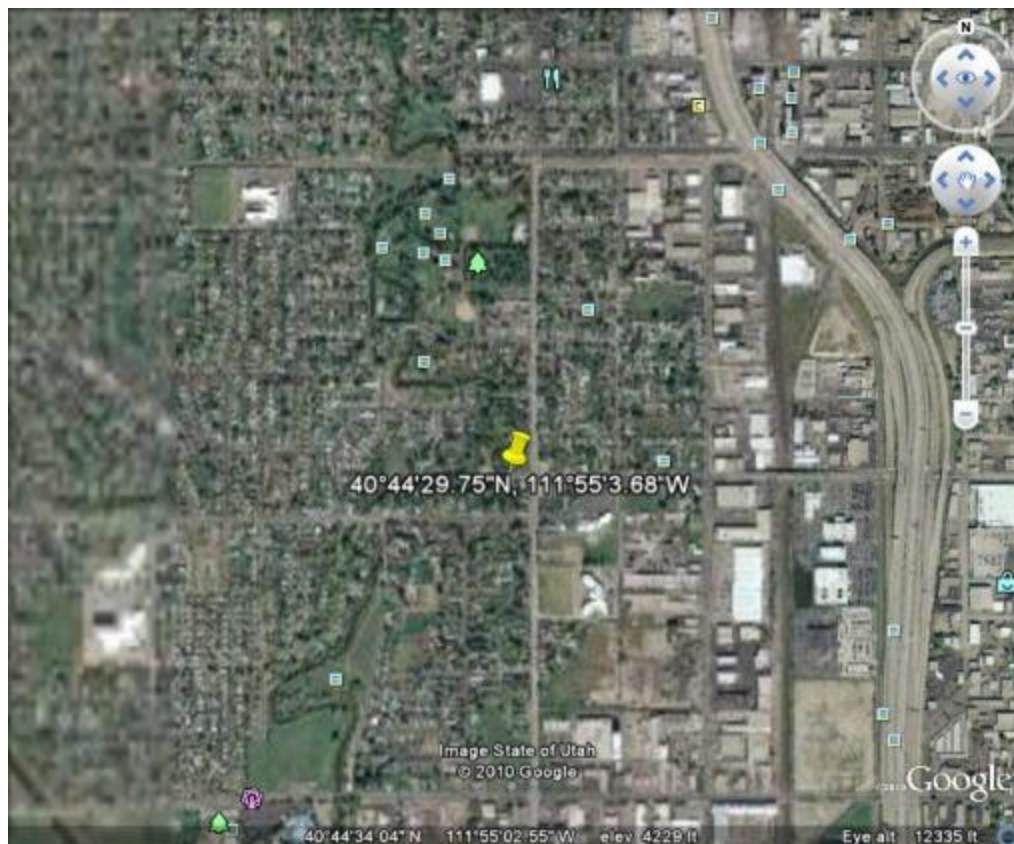
Red Butte Creek Oil Release Air Monitoring Journal

Garden Ward Sample Site at 11th East and Harvard



Red Butte Creek Oil Release Air Monitoring Journal

Sample Site at the Jordan River Confluence



Red Butte Creek Oil Release Air Monitoring Journal

Sample Site at Sunnyside Park

