

Red Butte Creek Oil Release Air Monitoring Journal

Date	Location (Time)	Analyte	Method	Result	GPS Location	Comment	
7/7/10	Miller Park, along Red Butte Creek (1525-1535)	Volatile Organic Compounds (VOCs)	PID	0.0 ppm ¹	40°44'46.37"N, 111°50'48.60"W	~20 yards from outlet from Miller Park, 10 ft above creek	
				0.0 ppm ¹	40°44'46.60"N, 111°50'46.30"W	~50 yards from outlet, on edge of creek	
				0.0 ppm ¹	40°44'47.10"N, 111°50'45.55"W	~75 yards from outlet, 2 ft above creek	
				0.0 ppm ¹	40°44'47.72"N, 111°50'43.65"W	At waterfall on bridge, 12 ft above creek	
		Hydrogen Sulfide (H ₂ S)	QRAEII	0.0 ppm ²	Odors are not detected in this area. No crews working in this area		
		Carbon Monoxide (CO)	QRAEII	0.0 ppm			
		Lower Explosive Limit (LEL)	QRAEII	0.0%			
	Confluence of Jordan River and Red Butte Creek (1350-1400)	Volatile Organic Compounds (VOCs)	Photo Ionization Detector (PID)	0.0 ppm ¹	40°44'29.75"N, 111°55'3.68"W	At inlet to Jordan River, 3 ft from water. No odors were detected. Some oil is built up around the barriers.	
		Hydrogen Sulfide (H ₂ S)	QRAEII	0.0 ppm ²			
		Carbon Monoxide (CO)	QRAEII	0.0 ppm			
		Lower Explosive Limit (LEL)	QRAEII	0.0%			
	Garden Park Ward, 1140 East Harvard (1540-1545)	Volatile Organic Compounds (VOCs)	Photo Ionization Detector (PID)	0.0-0.3 ppm ¹	40°44'42.01"N, 111°51'29.60"W	At the creek's edge. There were no workers in the creek. Low odor detected by technician when wind blows stronger.	
		Hydrogen Sulfide (H ₂ S)	QRAEII	0.0 ppm ²			
Carbon Monoxide (CO)		QRAEII	0.0 ppm				
Lower Explosive Limit (LEL)		QRAEII	0.0%				

¹ PID readings for VOCs are used as a screening method to determine contaminants typically associated with crude oil. If high levels of VOCs are detected, additional sampling is conducted

² 10ppm Hydrogen Sulfide (ceiling) - NIOSH recommended exposure level

Red Butte Creek Oil Release Air Monitoring Journal

Date	Location (Time)	Analyte	Method	Result	GPS Location	Comment
7/7/10	1100 East Harvard (1545-1550)	Volatile Organic Compounds (VOCs)	Photo Ionization Detector (PID)	0.3-0.7 ppm ¹	40°44'42.1"N, 111°51'34.0"W	Sample taken at culvert opening.
		Volatile Organic Compounds (VOCs)	Photo Ionization Detector (PID)	0.0-0.1ppm ¹		North of Harvard where Red Butte Creek goes underneath 1100 East. Low odors detected by technician.
		Hydrogen Sulfide (H ₂ S)	QRAEII	0.0 ppm ²		
		Carbon Monoxide (CO)	QRAEII	0.0 ppm		
		Lower Explosive Limit (LEL)	QRAEII	0.0%		
	Liberty Park (1555-1605)	Volatile Organic Compounds (VOCs)	Photo Ionization Detector (PID)	0.0 ppm ¹	In between 40°44'37.96"N, 111°52'25.29"W and 40°44'38.41"N, 111°52'21.04"W	Sampling along the north side of the lake. No odor was detected by technician.
		Hydrogen Sulfide (H ₂ S)	QRAEII	0.0 ppm ²		
		Carbon Monoxide (CO)	QRAEII	0.0 ppm		
		Lower Explosive Limit (LEL)	QRAEII	0.0%		
	1455 East Harvard (1458)	Volatile Organic Compounds (VOCs)	Summa Canister	----	40°44'41.28"N, 111°50'58.11"W	Sample was set inside the back of the house. Property is downwind of pressure-washing crews. 2-hour sample.
	At creek near 1350 Yale (1509)	Volatile Organic Compounds (VOCs)	Summa Canister	----	40°44'41.14"N, 111°51'7.03"W	Sample was set beside the creek downstream from pressure-washing crews. 2-hour sample. At the start of this sample, this location was about 100 yards downstream from crews.
Volatile Organic Compounds (VOCs)		Photo Ionization Detector (PID)	2.0-7.0 ppm ¹			
1351 Normandie Circle (1521)	Volatile Organic Compounds (VOCs)	Summa Canister	----	40°44'39.91"N, 111°51'8.92"W	Sample was set up in the front yard of this residence. Property is upwind from pressure-washing crews. 2-hour sample.	

Red Butte Creek Oil Release Air Monitoring Journal

Weather Conditions for:	K7PB Salt Lake City, UT (AS230)				Elev: 4615 ft; Latitude: 40.73067; Longitude: -111.82667				
Time: (MDT)	Temp. (f)	Dew	Relative	Wind	Wind	Altimeter	Station	Precip	Quality
		Point (f)	Humidity (%)	Direction	Speed (mph)	Setting (inches)	Pressure (inches)	24 hour (inches)	Control
07 Jul 4:25 pm	82	37	20	WNW	1G09	29.80	24.939	0.00	OK
07 Jul 4:10 pm	82	44	26	SW	4G09	29.80	24.939	0.00	OK
07 Jul 3:55 pm	82	41	23	WNW	3G10	29.79	24.930	0.00	OK
07 Jul 3:40 pm	80	40	24	WSW	4G09	29.80	24.939	0.00	OK
07 Jul 3:25 pm	80	44	28	W	3G10	29.81	24.947	0.00	OK
07 Jul 3:10 pm	80	42	26	SW	3G10	29.79	24.930	0.00	OK
07 Jul 2:55 pm	80	39	23	SSW	6G11	29.80	24.939	0.00	OK
07 Jul 2:40 pm	80	42	26	WSW	3G08	29.80	24.939	0.00	OK
07 Jul 2:25 pm	81	40	23	WSW	11G12	29.80	24.939	0.00	OK
07 Jul 2:10 pm	82	37	20	WSW	2G09	29.80	24.939	0.00	OK
07 Jul 1:55 pm	81	43	26	SSW	1G10	29.80	24.939	0.00	OK
07 Jul 1:40 pm	82	39	22	WSW	4G05	29.80	24.939	0.00	OK

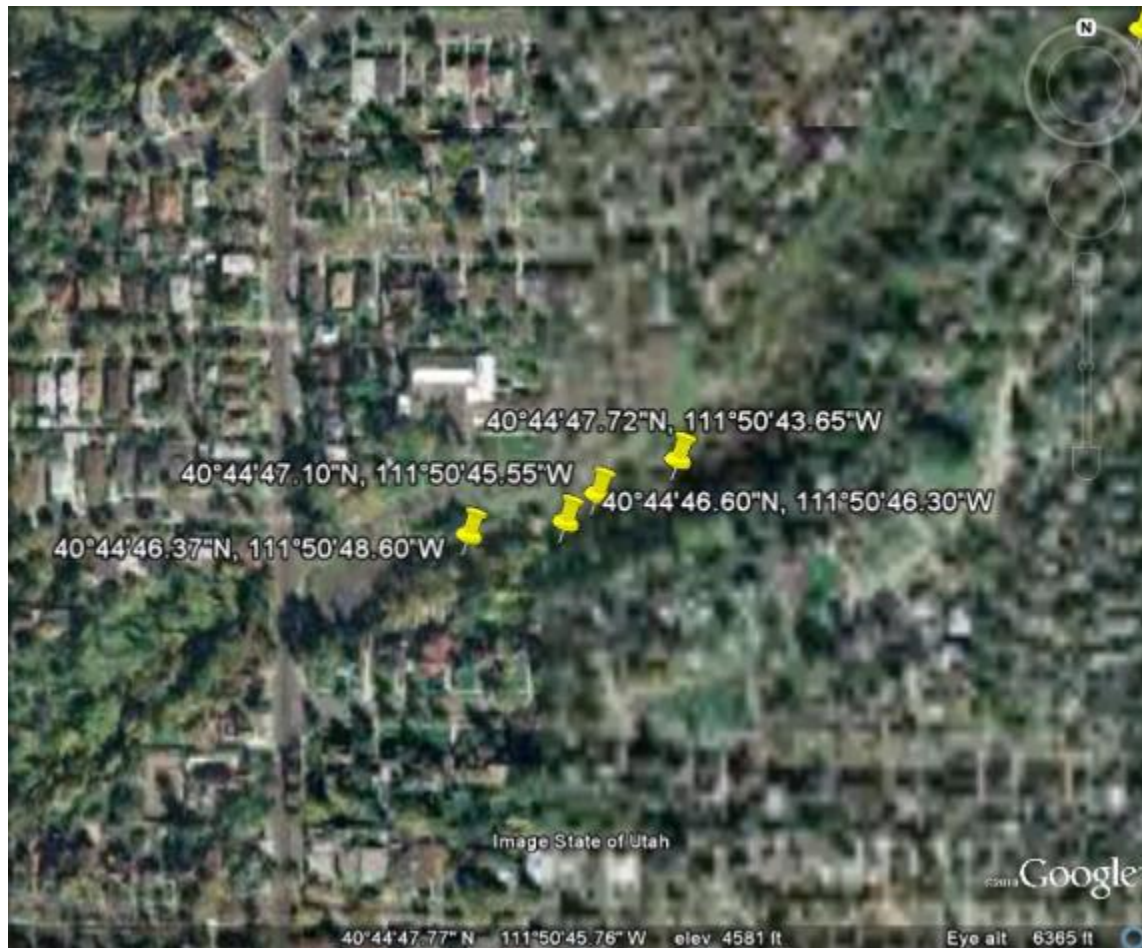
Red Butte Creek Oil Release Air Monitoring Journal

Liberty Park Sample Sites



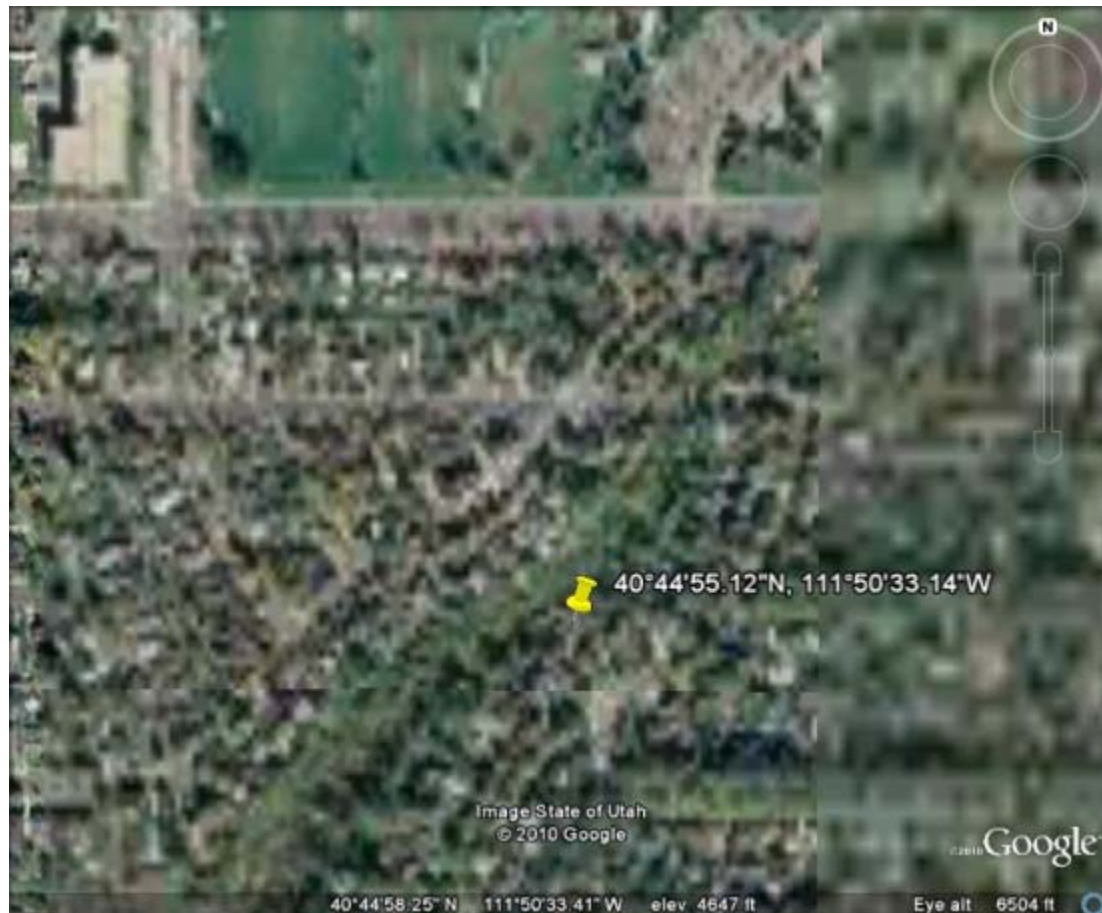
Red Butte Creek Oil Release Air Monitoring Journal

Miller Park Sample Sites



Red Butte Creek Oil Release Air Monitoring Journal

Resident Sample Site at 966 Military



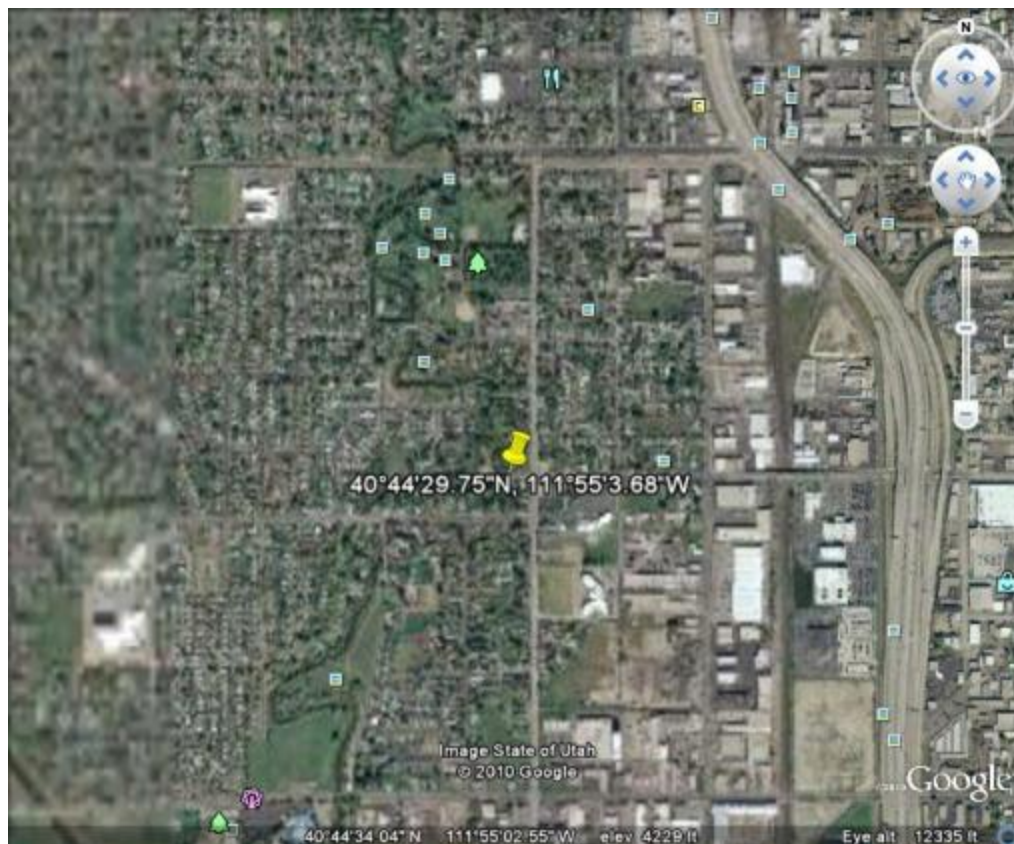
Red Butte Creek Oil Release Air Monitoring Journal

Garden Ward Sample Site at 11th East and Harvard



Red Butte Creek Oil Release Air Monitoring Journal

Sample Site at the Jordan River Confluence



Red Butte Creek Oil Release Air Monitoring Journal

Sample Site at Sunnyside Park

