

Red Butte Creek Oil Release Air Monitoring Journal

Date	Location (Time)	Analyte	Method	Result	GPS Location	Comment
7/6/10	Miller Park, along Red Butte Creek (1435-1450)	Volatile Organic Compounds (VOCs)	PID	2.5-6.7 ppm ¹	40°44'46.37"N, 111°50'48.60"W	~20 yards from outlet from Miller Park, 10 ft above creek
				0.5-1.3 ppm ¹	40°44'46.60"N, 111°50'46.30"W	~50 yards from outlet, on edge of creek
				10.0-22.0 ppm ¹	40°44'47.10"N, 111°50'45.55"W	~75 yards from outlet, 2 ft above creek
				0.0-1.7 ppm ¹	40°44'47.72"N, 111°50'43.65"W	At waterfall on bridge, 12 ft above creek
		Hydrogen Sulfide (H ₂ S)	QRAEII	0.0 ppm ²	Odors high in this area. Pressure-washing crews located between 70 yards from creek outlet to above the waterfall.	
		Carbon Monoxide (CO)	QRAEII	0.0 ppm		
		Lower Explosive Limit (LEL)	QRAEII	0.0%		
	Confluence of Jordan River and Red Butte Creek (1355-1405)	Volatile Organic Compounds (VOCs)	Photo Ionization Detector (PID)	0.0 ppm ¹	40°44'29.75"N, 111°55'3.68"W	At inlet to Jordan River, 3 ft from water. No odors were detected. Some oil is built up around the barriers.
		Hydrogen Sulfide (H ₂ S)	QRAEII	0.0 ppm ²		
		Carbon Monoxide (CO)	QRAEII	0.0 ppm		
		Lower Explosive Limit (LEL)	QRAEII	0.0%		
	Garden Park Ward, 1140 East Harvard (1455-1500)	Volatile Organic Compounds (VOCs)	Photo Ionization Detector (PID)	0.0-0.1 ppm ¹	40°44'42.01"N, 111°51'29.60"W	At the creek's edge. There were workers in the creek. Low odor detected by technician on bridge near the entrance or along creek.
		Hydrogen Sulfide (H ₂ S)	QRAEII	0.0 ppm ²		
Carbon Monoxide (CO)		QRAEII	0.0 ppm			
Lower Explosive Limit (LEL)		QRAEII	0.0%			

¹ PID readings for VOCs are used as a screening method to determine contaminants typically associated with crude oil. If high levels of VOCs are detected, additional sampling is conducted

² 10ppm Hydrogen Sulfide (ceiling) - NIOSH recommended exposure level

Red Butte Creek Oil Release Air Monitoring Journal

Date	Location (Time)	Analyte	Method	Result	GPS Location	Comment
7/6/10	1100 East Harvard (1500-1505)	Volatile Organic Compounds (VOCs)	Photo Ionization Detector (PID)	0.1-0.3 ppm ¹	40°44'42.1"N, 111°51'34.0"W	Sample taken at culvert opening.
		Volatile Organic Compounds (VOCs)	Photo Ionization Detector (PID)	0.0-0.3 ppm ¹		North of Harvard where Red Butte Creek goes underneath 1100 East. No odors detected by technician.
		Hydrogen Sulfide (H ₂ S)	QRAEII	0.0 ppm ²		
		Carbon Monoxide (CO)	QRAEII	0.0 ppm		
		Lower Explosive Limit (LEL)	QRAEII	0.0%		
	Liberty Park (1415-1430)	Volatile Organic Compounds (VOCs)	Photo Ionization Detector (PID)	0.0 ppm ¹	In between 40°44'37.96"N, 111°52'25.29"W and 40°44'38.41"N, 111°52'21.04"W	Sampling along the north side of the lake. No odor was detected by technician.
		Hydrogen Sulfide (H ₂ S)	QRAEII	0.0 ppm ²		
		Carbon Monoxide (CO)	QRAEII	0.0 ppm		
Lower Explosive Limit (LEL)		QRAEII	0.0%			

Red Butte Creek Oil Release Air Monitoring Journal

Weather Conditions for:	K7PB Salt Lake City, UT (AS230)				<small>Elev: 4615 ft; Latitude: 40.73067; Longitude: -111.82667</small>				
Time: (MDT)	Temp. (f)	Dew Point (f)	Relative Humidity (%)	Wind Direction	Wind Speed (mph)	Altimeter Setting (inches)	Station Pressure (inches)	Precip 24 hour (inches)	Quality Control
06 Jul 3:39 pm	82	44	26	WNW	2G11	29.71	25.080	0.00	OK
06 Jul 3:29 pm	82	46	28	NE	2G11	29.71	25.080	0.00	OK
06 Jul 3:19 pm	82	47	29	W	1G11	29.72	25.089	0.00	OK
06 Jul 3:09 pm	81	45	28	W	2G11	29.72	25.089	0.00	OK
06 Jul 2:59 pm	82	46	28	NW	3G13	29.72	25.089	0.00	OK
06 Jul 2:49 pm	81	48	32	W	3G13	29.71	25.080	0.00	OK
06 Jul 2:39 pm	81	48	32	W	5G13	29.71	25.080	0.00	OK
06 Jul 2:29 pm	81	48	32	NW	3G11	29.72	25.089	0.00	OK
06 Jul 2:19 pm	81	46	29	WNW	G11	29.72	25.089	0.00	OK
06 Jul 2:09 pm	80	47	31	WNW	1G11	29.73	25.098	0.00	OK
06 Jul 1:59 pm	80	45	29	WSW	4G11	29.72	25.089	0.00	OK
06 Jul 1:49 pm	80	47	31	WNW	1G11	29.72	25.089	0.00	OK
06 Jul 1:39 pm	80	51	36	WNW	1G11	29.72	25.089	0.00	OK

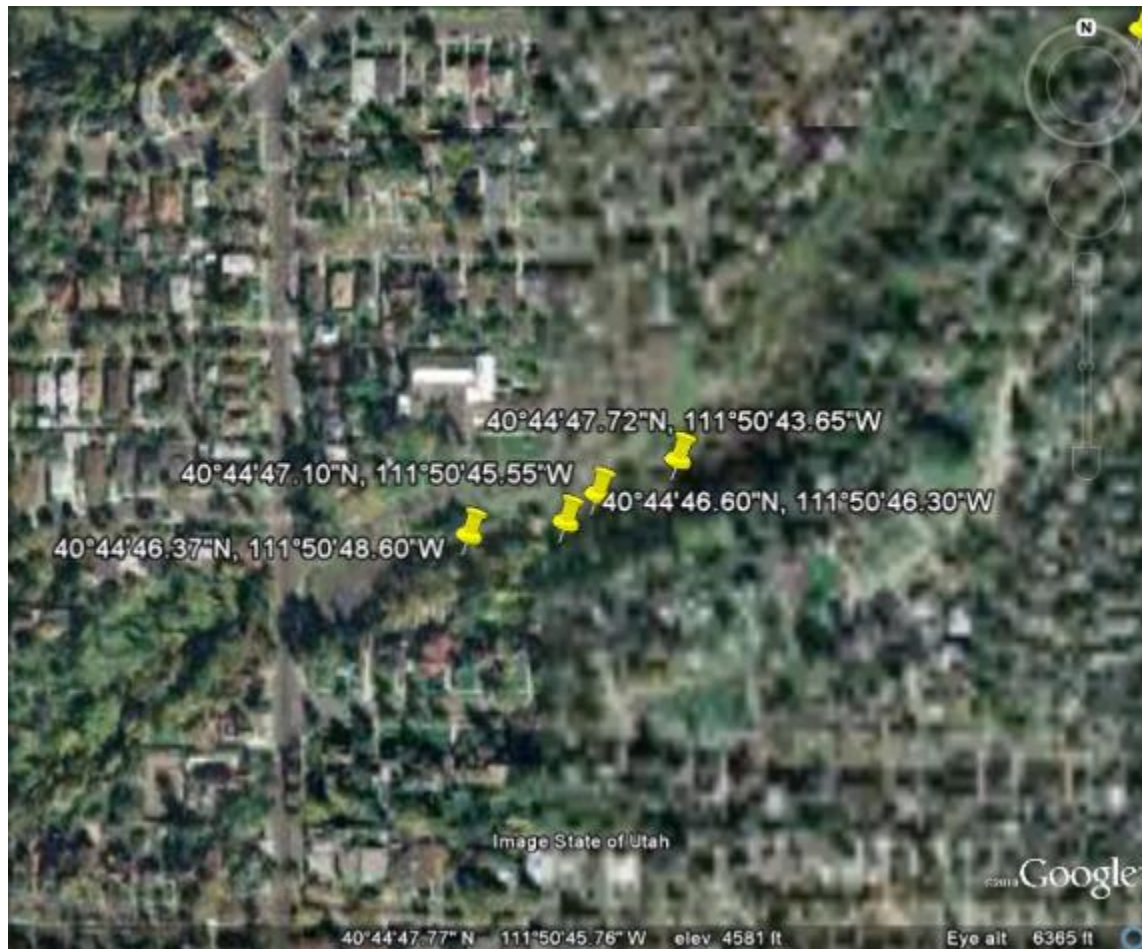
Red Butte Creek Oil Release Air Monitoring Journal

Liberty Park Sample Sites



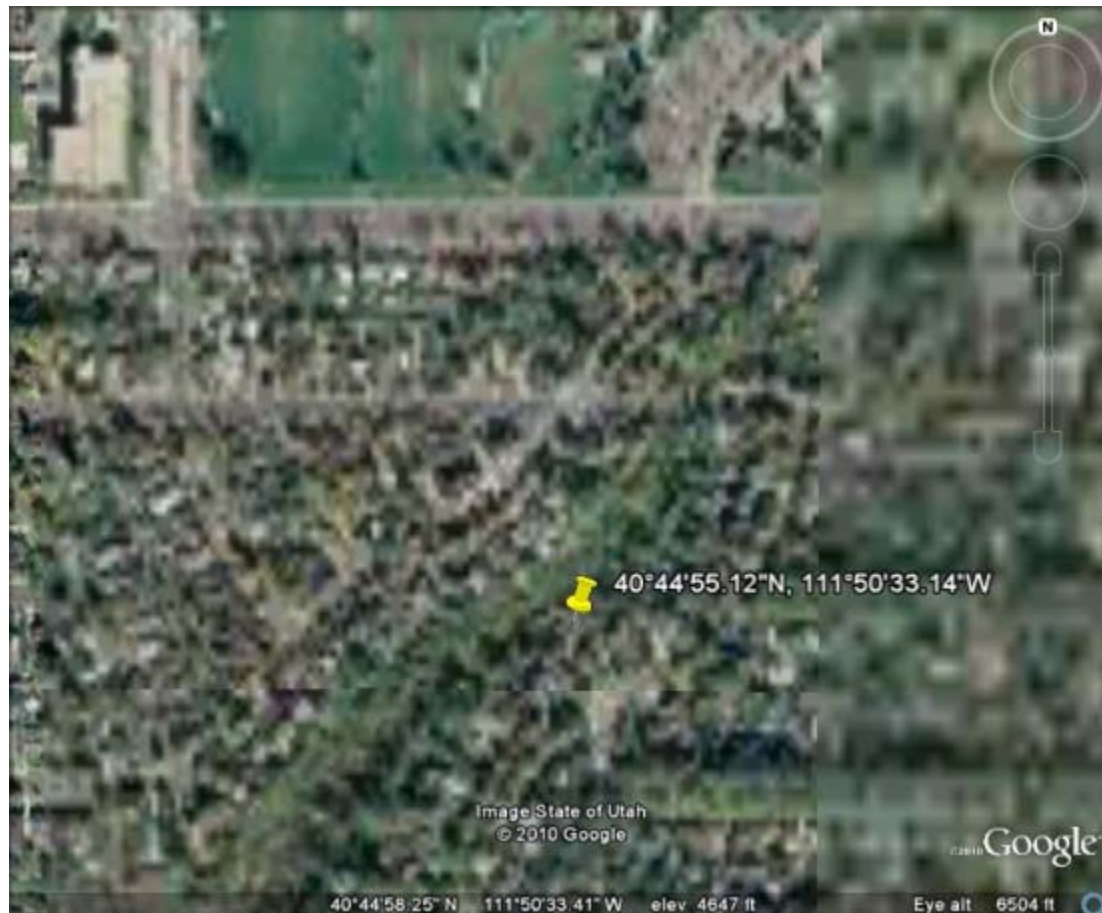
Red Butte Creek Oil Release Air Monitoring Journal

Miller Park Sample Sites



Red Butte Creek Oil Release Air Monitoring Journal

Resident Sample Site at 966 Military



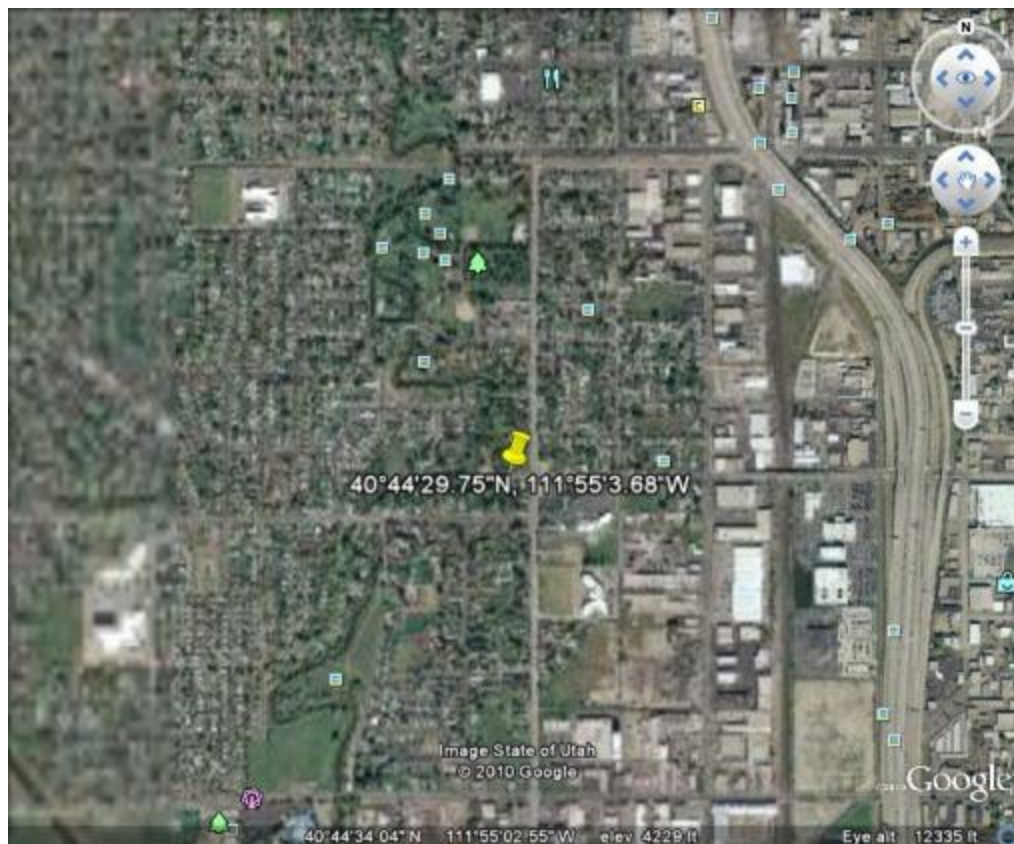
Red Butte Creek Oil Release Air Monitoring Journal

Garden Ward Sample Site at 11th East and Harvard



Red Butte Creek Oil Release Air Monitoring Journal

Sample Site at the Jordan River Confluence



Red Butte Creek Oil Release Air Monitoring Journal

Sample Site at Sunnyside Park

