

Red Butte Creek Oil Release Air Monitoring Journal

Date	Location (Time)	Analyte	Method	Result	GPS Location	Comment	
7/16/10	Miller Park, along Red Butte Creek (1305-1320)	Volatile Organic Compounds (VOCs)	PID	0.0 ppm ¹	40°44'46.37"N, 111°50'48.60"W	~20 yards from outlet from Miller Park, 10 ft above creek	
				0.0 ppm ¹	40°44'46.60"N, 111°50'46.30"W	~50 yards from outlet, on edge of creek	
				0.0 ppm ¹	40°44'47.10"N, 111°50'45.55"W	~75 yards from outlet, 2 ft above creek	
				0.0 ppm ¹	40°44'47.72"N, 111°50'43.65"W	At waterfall on bridge, 12 ft above creek	
		Hydrogen Sulfide (H ₂ S)	QRAEII	0.0 ppm ²	No odor detected. Water very low. No crews working in this area.		
		Carbon Monoxide (CO)	QRAEII	0.0 ppm			
		Lower Explosive Limit (LEL)	QRAEII	0.0%			
	Confluence of Jordan River and Red Butte Creek (1220-1230)	Volatile Organic Compounds (VOCs)	Photo Ionization Detector (PID)	0.0-0.1 ppm ¹	40°44'29.75"N, 111°55'3.68"W	At inlet to Jordan River, 3 ft from water. No odors were detected. Oil is built up around the barriers. No crews working in this area.	
		Hydrogen Sulfide (H ₂ S)	QRAEII	0.0 ppm ²			
		Carbon Monoxide (CO)	QRAEII	0.0 ppm			
		Lower Explosive Limit (LEL)	QRAEII	0.0%			
	Garden Park Ward, 1140 East Harvard (1325-1330)	Volatile Organic Compounds (VOCs)	Photo Ionization Detector (PID)	0.0 ppm ¹	40°44'42.01"N, 111°51'29.60"W	At the creek's edge. Two crew members working to hand-scrub any remaining oil off of rocks. No odor detected by technician. Water very low.	
		Hydrogen Sulfide (H ₂ S)	QRAEII	0.0 ppm ²			
Carbon Monoxide (CO)		QRAEII	0.0 ppm				
Lower Explosive Limit (LEL)		QRAEII	0.0%				

¹ PID readings for VOCs are used as a screening method to determine contaminants typically associated with crude oil. If high levels of VOCs are detected, additional sampling is conducted

² 10ppm Hydrogen Sulfide (ceiling) - NIOSH recommended exposure level

Red Butte Creek Oil Release Air Monitoring Journal

Date	Location (Time)	Analyte	Method	Result	GPS Location	Comment
7/16/10	1100 East Harvard (1332-1337)	Volatile Organic Compounds (VOCs)	Photo Ionization Detector (PID)	0.0 ppm ¹	40°44'42.1"N, 111°51'34.0"W	Sample taken at culvert opening.
		Volatile Organic Compounds (VOCs)	Photo Ionization Detector (PID)	0.0 ppm ¹		North of Harvard where Red Butte Creek goes underneath 1100 East. Very low to no odors detected by technician. Water very low.
		Hydrogen Sulfide (H ₂ S)	QRAEII	0.0 ppm ²		
		Carbon Monoxide (CO)	QRAEII	0.0 ppm		
		Lower Explosive Limit (LEL)	QRAEII	0.0%		
	Liberty Park (1245-1255)	Volatile Organic Compounds (VOCs)	Photo Ionization Detector (PID)	0.0 ppm ¹	In between 40°44'37.96"N, 111°52'25.29"W and 40°44'38.41"N, 111°52'21.04"W	Sampling along the north side of the lake. No odor was detected by technician.
		Hydrogen Sulfide (H ₂ S)	QRAEII	0.0 ppm ²		
		Carbon Monoxide (CO)	QRAEII	0.0 ppm		
Lower Explosive Limit (LEL)		QRAEII	0.0%			

Red Butte Creek Oil Release Air Monitoring Journal

Weather Conditions for:	K7PB Salt Lake City, UT (AS230)				Elev: 4615 ft; Latitude: 40.73067; Longitude: -111.82667				
Time: (MDT)	Temp. (f)	Dew	Relative	Wind	Wind	Altimeter	Station	Precip	Quality
		Point (f)	Humidity (%)	Direction	Speed (mph)	Setting (inches)	Pressure (inches)	24 hour (inches)	Control
16 Jul 1:41 pm	97	42	15	W	G05	29.70	25.072	0.00	OK
16 Jul 1:31 pm	96	46	18	WSW	1G03	29.71	25.080	0.00	OK
16 Jul 1:21 pm	93	50	23	WSW	G03	29.73	25.098	0.00	OK
16 Jul 1:11 pm	93	43	18	SSE	G03	29.73	25.098	0.00	OK
16 Jul 1:01 pm	92	48	22	SSE	1G05	29.74	25.106	0.00	OK
16 Jul 12:51 pm	93	49	22	S	1G05	29.75	25.115	0.00	OK
16 Jul 12:41 pm	92	48	22	S	1G05	29.74	25.106	0.00	OK
16 Jul 12:31 pm	91	44	20	SSW	1G05	29.76	25.124	0.00	OK
16 Jul 12:21 pm	91	49	24	SSW	3G05	29.76	25.124	0.00	OK
16 Jul 12:11 pm	90	50	25	S	1G04	29.76	25.124	0.00	OK

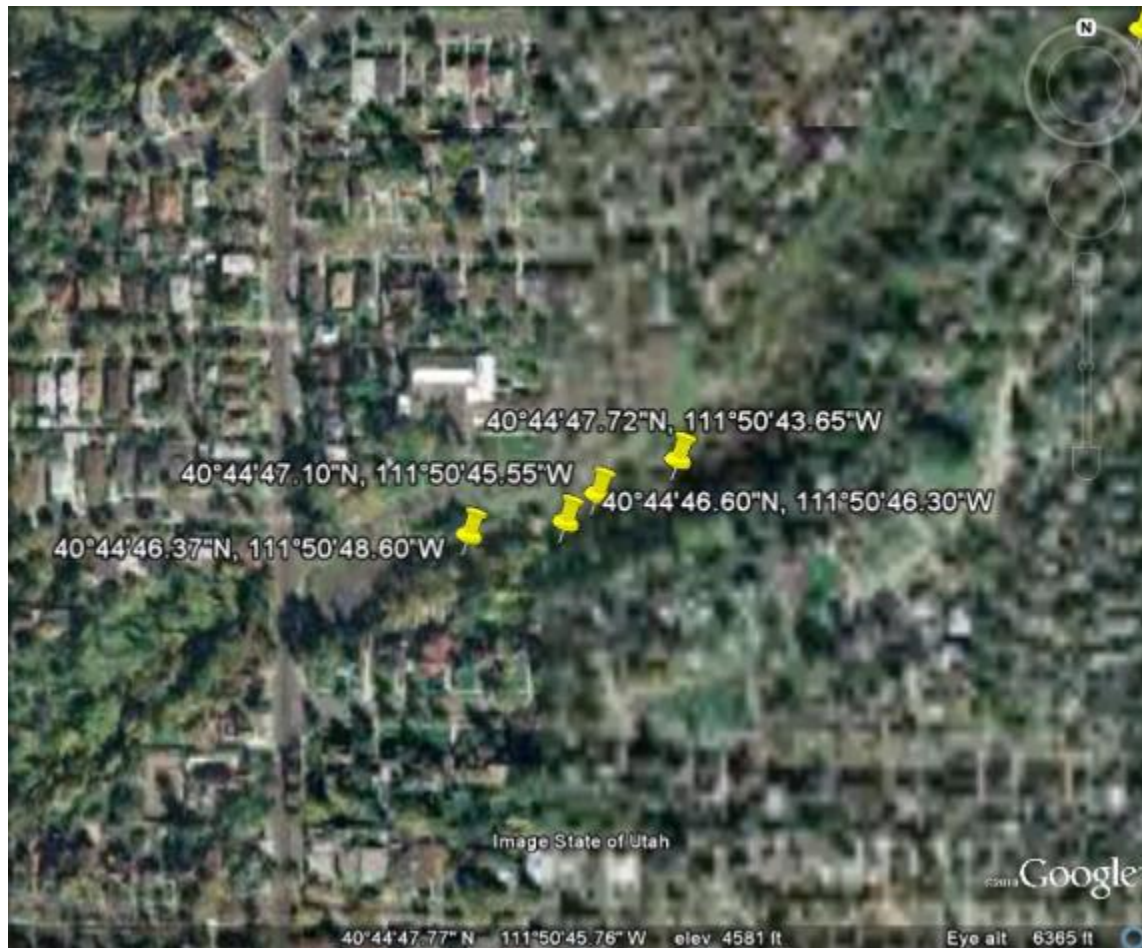
Red Butte Creek Oil Release Air Monitoring Journal

Liberty Park Sample Sites



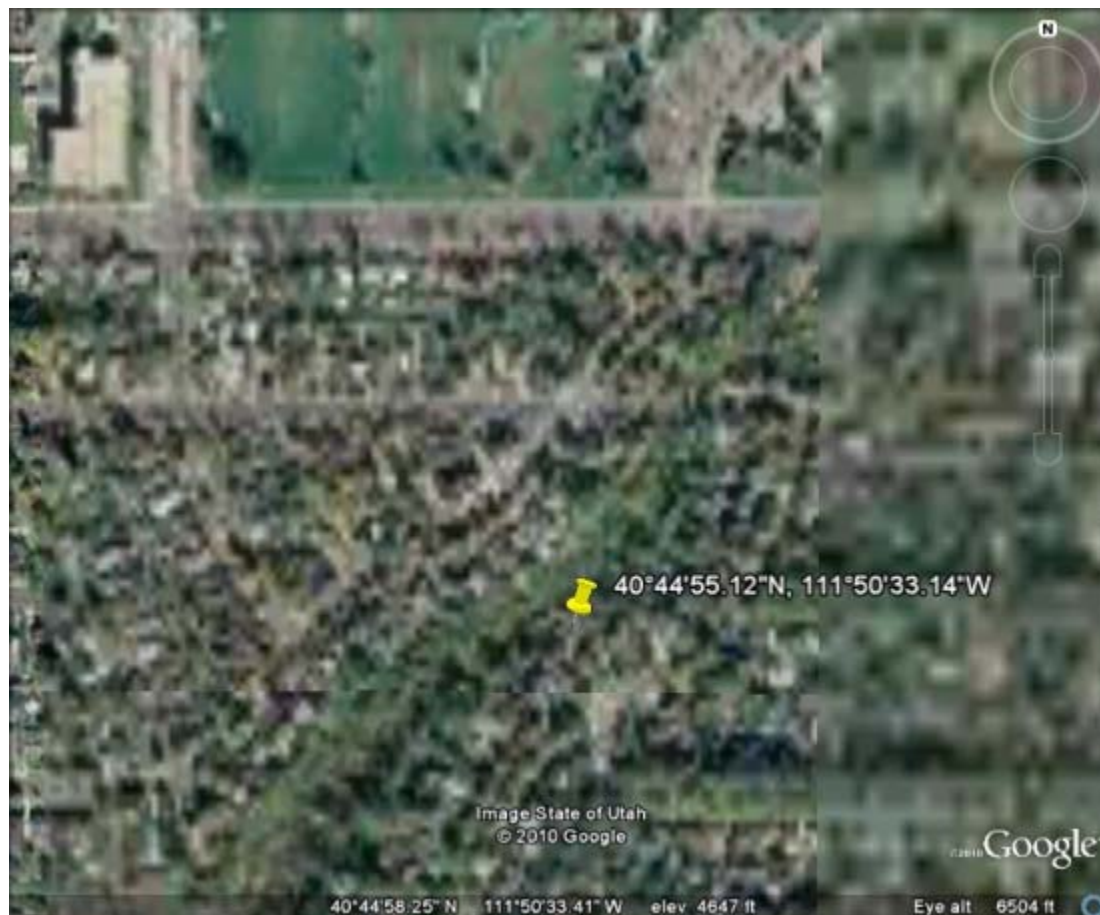
Red Butte Creek Oil Release Air Monitoring Journal

Miller Park Sample Sites



Red Butte Creek Oil Release Air Monitoring Journal

Resident Sample Site at 966 Military



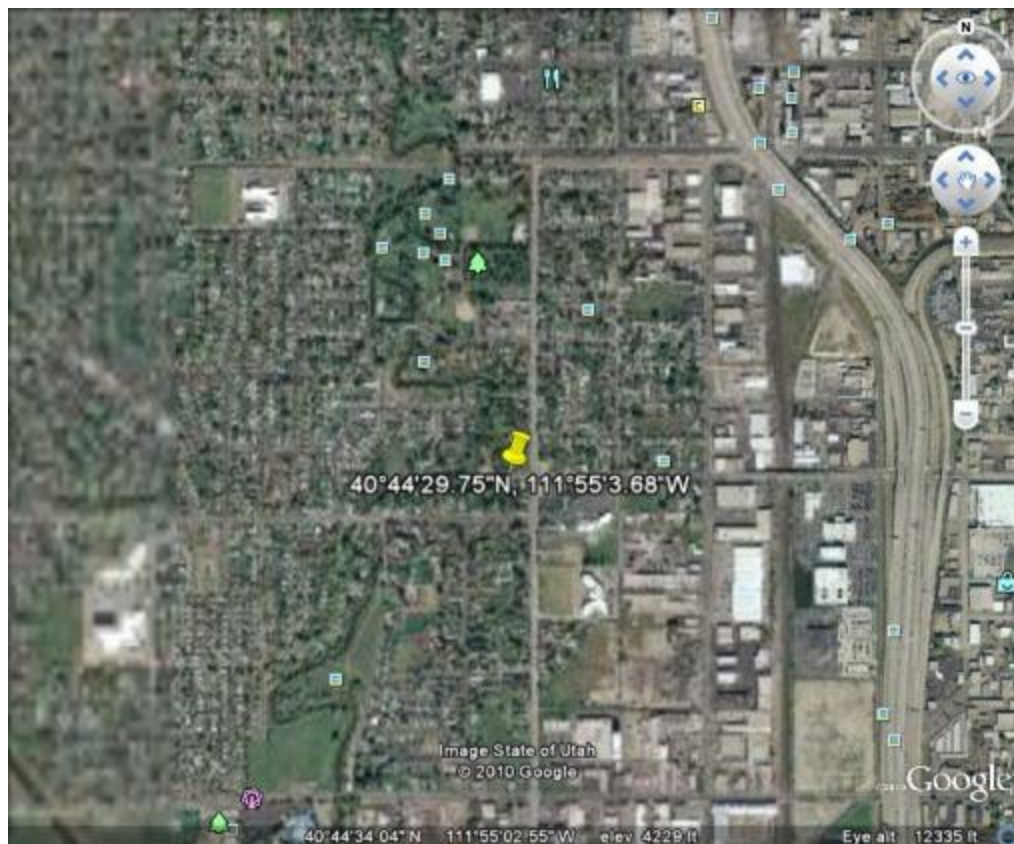
Red Butte Creek Oil Release Air Monitoring Journal

Garden Ward Sample Site at 11th East and Harvard



Red Butte Creek Oil Release Air Monitoring Journal

Sample Site at the Jordan River Confluence



Red Butte Creek Oil Release Air Monitoring Journal

Sample Site at Sunnyside Park

