

Red Butte Creek Oil Release Air Monitoring Journal

Date	Location (Time)	Analyte	Method	Result	GPS Location	Comment		
7/14/10	Miller Park, along Red Butte Creek (1450-1500)	Volatile Organic Compounds (VOCs)	PID	0.0 ppm ¹	40°44'46.37"N, 111°50'48.60"W	~20 yards from outlet from Miller Park, 10 ft above creek		
				0.0 ppm ¹	40°44'46.60"N, 111°50'46.30"W	~50 yards from outlet, on edge of creek		
				0.0 ppm ¹	40°44'47.10"N, 111°50'45.55"W	~75 yards from outlet, 2 ft above creek		
				0.0 ppm ¹	40°44'47.72"N, 111°50'43.65"W	At waterfall on bridge, 12 ft above creek		
		Hydrogen Sulfide (H ₂ S)	QRAEII	0.0 ppm ²	Slight odor at waterfall. No crews working in this area. Stream flow is reduced for maintenance on east end.			
		Carbon Monoxide (CO)	QRAEII	0.0 ppm				
		Lower Explosive Limit (LEL)	QRAEII	0.0%				
	Confluence of Jordan River and Red Butte Creek (1354-1405)	Volatile Organic Compounds (VOCs)	Photo Ionization Detector (PID)	0.0 ppm ¹	40°44'29.75"N, 111°55'3.68"W	At inlet to Jordan River, 3 ft from water. No odors were detected. Oil is built up around the barriers. No crews working in this area.		
				Hydrogen Sulfide (H ₂ S)			QRAEII	0.0 ppm ²
				Carbon Monoxide (CO)			QRAEII	0.0 ppm
				Lower Explosive Limit (LEL)			QRAEII	0.0%
	Garden Park Ward, 1140 East Harvard (1435-1450)	Volatile Organic Compounds (VOCs)	Photo Ionization Detector (PID)	0.0 ppm ¹	40°44'42.01"N, 111°51'29.60"W	At the creek's edge. Crews are working downstream from this site. Slight odor detected by technician.		
				Hydrogen Sulfide (H ₂ S)			QRAEII	0.0 ppm ²
Carbon Monoxide (CO)				QRAEII			0.0 ppm	
Lower Explosive Limit (LEL)				QRAEII			0.0%	

¹ PID readings for VOCs are used as a screening method to determine contaminants typically associated with crude oil. If high levels of VOCs are detected, additional sampling is conducted

² 10ppm Hydrogen Sulfide (ceiling) - NIOSH recommended exposure level

Red Butte Creek Oil Release Air Monitoring Journal

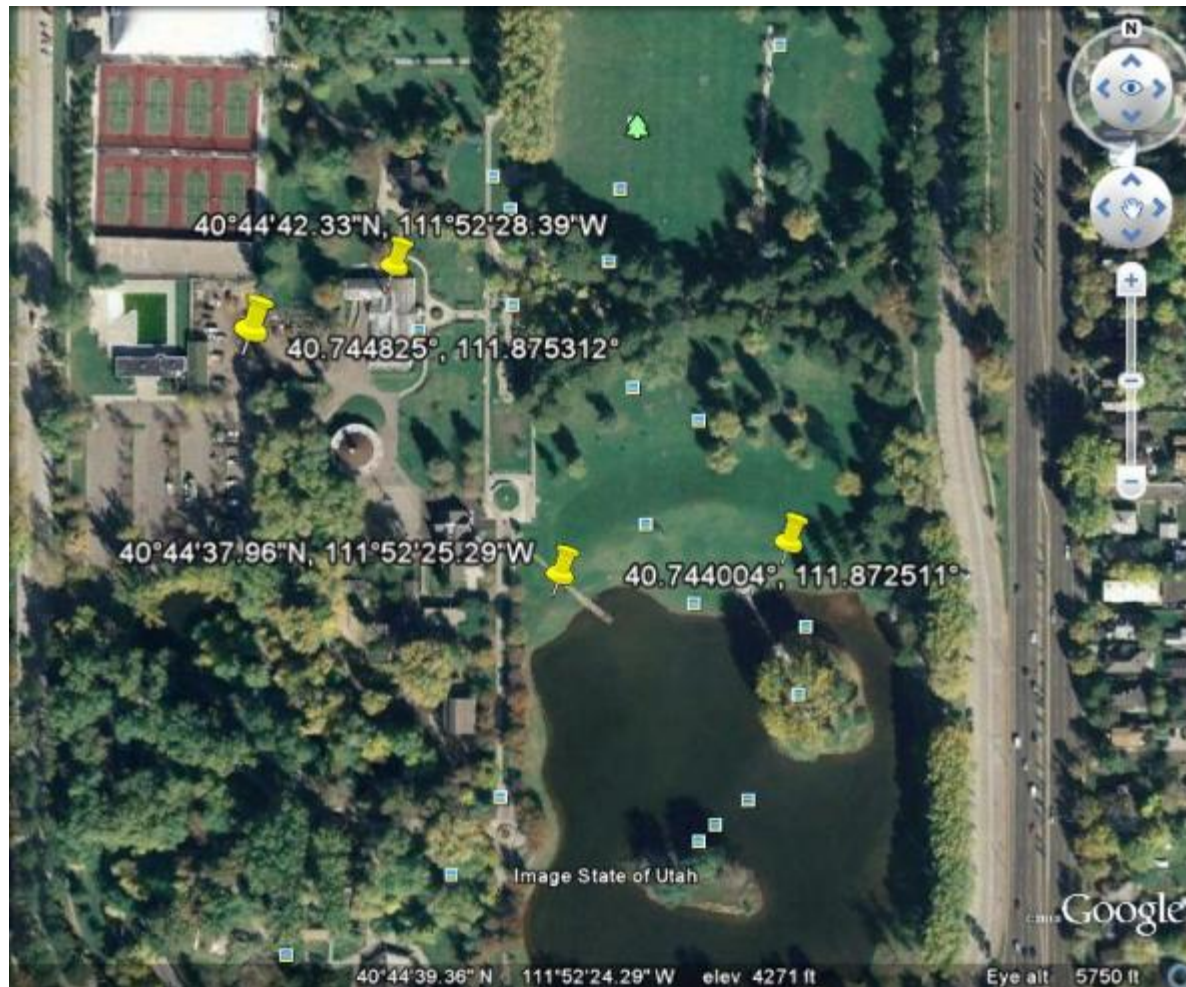
Date	Location (Time)	Analyte	Method	Result	GPS Location	Comment
7/14/10	1100 East Harvard (1427-1432)	Volatile Organic Compounds (VOCs)	Photo Ionization Detector (PID)	0.0 ppm ¹	40°44'42.1"N, 111°51'34.0"W	Sample taken at culvert opening.
		Volatile Organic Compounds (VOCs)	Photo Ionization Detector (PID)	0.0 ppm ¹		North of Harvard where Red Butte Creek goes underneath 1100 East. No odors detected by technician.
		Hydrogen Sulfide (H ₂ S)	QRAEII	0.0 ppm ²		
		Carbon Monoxide (CO)	QRAEII	0.0 ppm		
		Lower Explosive Limit (LEL)	QRAEII	0.0%		
	Liberty Park (1413-1420)	Volatile Organic Compounds (VOCs)	Photo Ionization Detector (PID)	0.0 ppm ¹	In between 40°44'37.96"N, 111°52'25.29"W and 40°44'38.41"N, 111°52'21.04"W	Sampling along the north side of the lake. No odor was detected by technician.
		Hydrogen Sulfide (H ₂ S)	QRAEII	0.0 ppm ²		
		Carbon Monoxide (CO)	QRAEII	0.0 ppm		
Lower Explosive Limit (LEL)		QRAEII	0.0%			

Red Butte Creek Oil Release Air Monitoring Journal

Weather Conditions for:	K7PB Salt Lake City, UT (AS230)				Elev: 4615 ft; Latitude: 40.73067; Longitude: -111.82667				
Time: (MDT)	Temp. (f)	Dew	Relative	Wind	Wind	Altimeter	Station	Precip	Quality
		Point (f)	Humidity (%)	Direction	Speed (mph)	Setting (inches)	Pressure (inches)	24 hour (inches)	Control
14 Jul 2:55 pm	80			W	9G17	856.63	0.00		OK
14 Jul 2:50 pm	79			W	12G17	856.65	0.00		OK
14 Jul 2:45 pm	79	-98	0	W	10G16	856.72	0.00		OK
14 Jul 2:40 pm	80			W	9G15	856.72	0.00		OK
14 Jul 2:35 pm	80	-98	0	WNW	6G11	856.76	0.00		OK
14 Jul 2:30 pm	80			WSW	8G13	856.77	0.00		OK
14 Jul 2:25 pm	79			W	7G14	856.80	0.00		OK
14 Jul 2:20 pm	79	-99	0	W	9G14	856.83	0.00		OK
14 Jul 2:15 pm	79			W	9G13	856.81	0.00		OK
14 Jul 2:10 pm	79			W	8G13	856.86	0.00		OK
14 Jul 2:05 pm	79			W	9G13	856.86	0.00		OK
14 Jul 2:00 pm	78			WSW	7G11	856.87	0.00		OK
14 Jul 1:55 pm	78			WSW	6G12	856.88	0.00		OK
14 Jul 1:50 pm	77	-99	0	W	8G12	856.91	0.00		OK

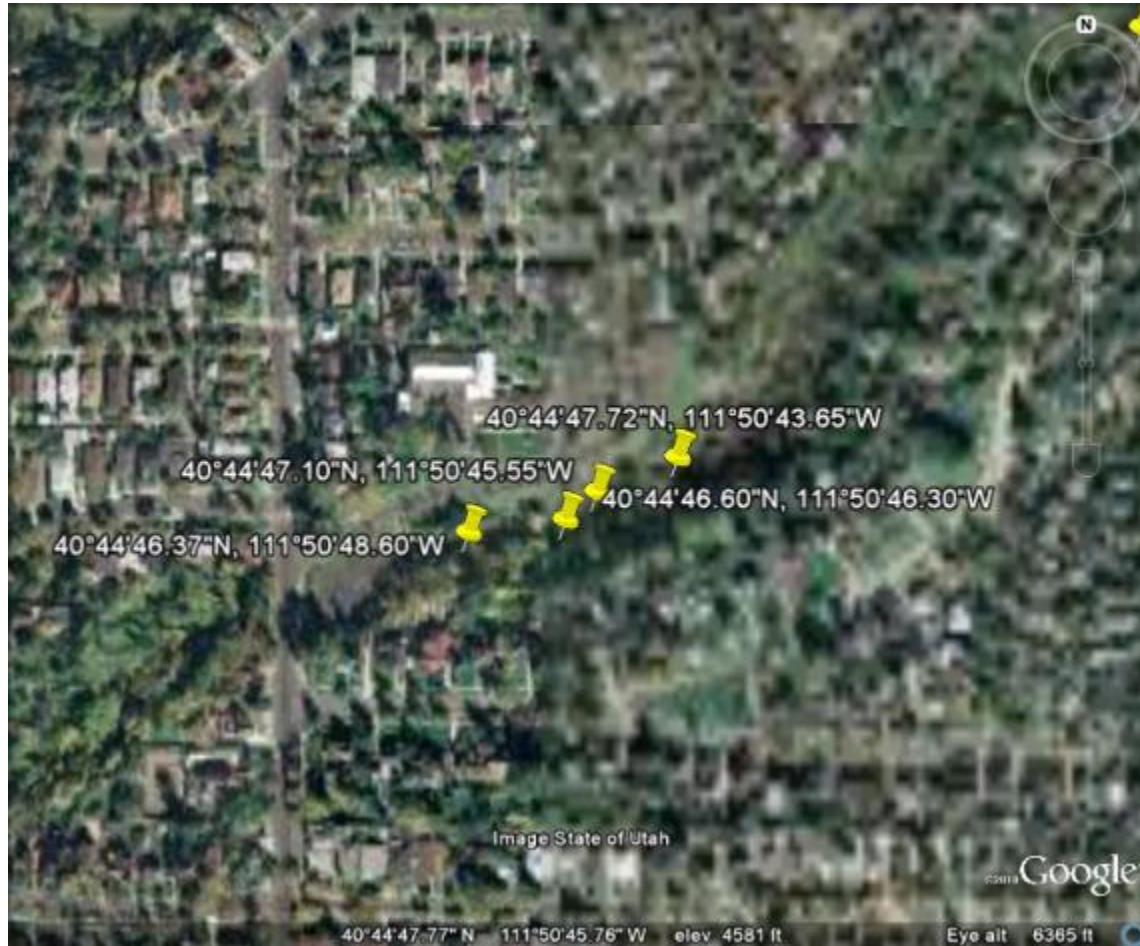
Red Butte Creek Oil Release Air Monitoring Journal

Liberty Park Sample Sites



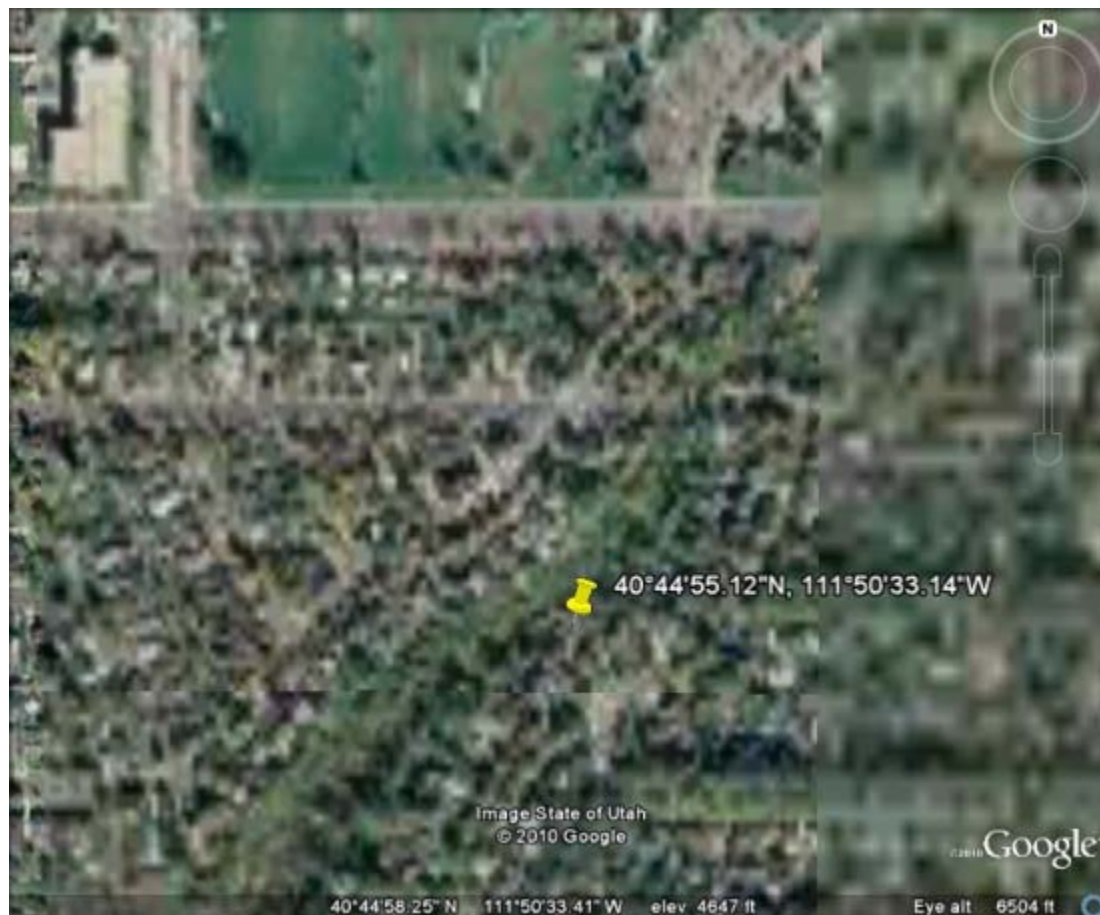
Red Butte Creek Oil Release Air Monitoring Journal

Miller Park Sample Sites



Red Butte Creek Oil Release Air Monitoring Journal

Resident Sample Site at 966 Military



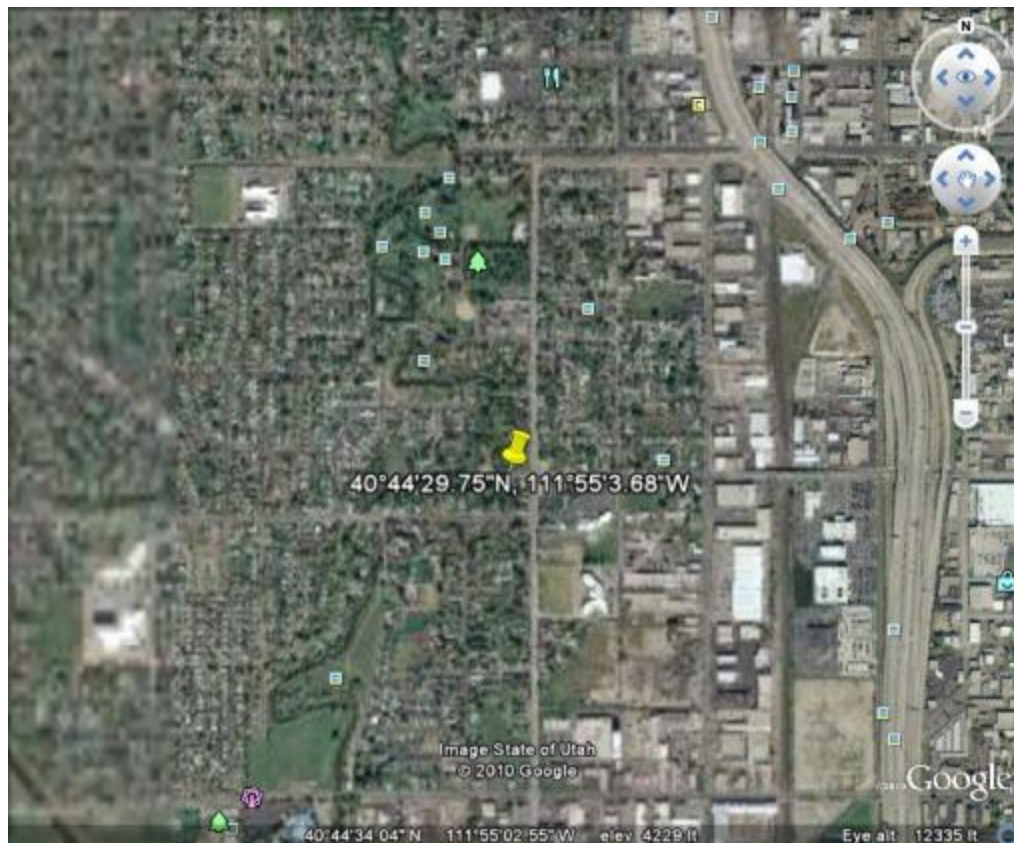
Red Butte Creek Oil Release Air Monitoring Journal

Garden Ward Sample Site at 11th East and Harvard



Red Butte Creek Oil Release Air Monitoring Journal

Sample Site at the Jordan River Confluence



Red Butte Creek Oil Release Air Monitoring Journal

Sample Site at Sunnyside Park

