

Red Butte Creek Oil Release Air Monitoring Journal

Date	Location (Time)	Analyte	Method	Result	GPS Location	Comment		
6/28/10	Miller Park, along Red Butte Creek (1140-1155)	VOCs	PID	0.6-0.7 ppm ¹	40°44'46.37"N, 111°50'48.60"W	~20 yards from outlet from Miller Park, 10 ft above creek		
				0.8-1.1 ppm ¹	40°44'46.60"N, 111°50'46.30"W	~50 yards from outlet, on edge of creek		
				1.7 ppm ¹	40°44'47.10"N, 111°50'45.55"W	~75 yards from outlet, 2 ft above creek		
				2.0 ppm ¹	40°44'47.72"N, 111°50'43.65"W	At waterfall on bridge, 12 ft above creek		
		Hydrogen Sulfide (H ₂ S)	QRAEII	0.0 ppm ²	At all locations along Red Butte Creek at Miller Park. There were no workers scrubbing the creek. Odors were moderate in this area.			
		Carbon Monoxide (CO)	QRAEII	0.0 ppm				
		Lower Explosive Limit (LEL)	QRAEII	0.0%				
	Confluence of Jordan River and Red Butte Creek (1100-1110)	Volatile Organic Compounds (VOCs)	Photo Ionization Detector (PID)	0.0-0.1 ppm ¹	40°44'29.75"N, 111°55'3.68"W	At inlet to Jordan River, 3 ft from water. No odors were detected.		
				Hydrogen Sulfide (H ₂ S)			QRAEII	0.0 ppm ²
				Carbon Monoxide (CO)			QRAEII	0.0 ppm
				Lower Explosive Limit (LEL)			QRAEII	0.0%
	Garden Park Ward, 1140 East Harvard (1200-1205)	Volatile Organic Compounds (VOCs)	Photo Ionization Detector (PID)	0.0-0.1 ppm ¹	40°44'42.01"N, 111°51'29.60"W	At the creek's edge. There were workers in the creek. No odor detected by technician on bridge near the entrance or along creek.		
				Hydrogen Sulfide (H ₂ S)			QRAEII	0.0 ppm ²
Carbon Monoxide (CO)				QRAEII			0.0 ppm	
Lower Explosive Limit (LEL)				QRAEII			0.0%	

¹ PID readings for VOCs are used as a screening method to determine contaminants typically associated with crude oil. If high levels of VOCs are detected, additional sampling is conducted

² 10ppm Hydrogen Sulfide (ceiling) - NIOSH recommended exposure level

Red Butte Creek Oil Release Air Monitoring Journal

Date	Location (Time)	Analyte	Method	Result	GPS Location	Comment
6/28/10	1100 East Harvard (1210-1215)	Volatile Organic Compounds (VOCs)	Photo Ionization Detector (PID)	1.3 ppm ¹	40°44'42.1"N, 111°51'34.0"W	Sample taken at culvert opening.
		Volatile Organic Compounds (VOCs)	Photo Ionization Detector (PID)	1.0 ppm ¹		North of Harvard where Red Butte Creek goes underneath 1100 East. Low odors detected by technician.
		Hydrogen Sulfide (H ₂ S)	QRAEII	0.0 ppm ²		
		Carbon Monoxide (CO)	QRAEII	0.0 ppm		
		Lower Explosive Limit (LEL)	QRAEII	0.0%		
	Liberty Park (1120-1135)	Volatile Organic Compounds (VOCs)	Photo Ionization Detector (PID)	0.0 ppm ¹	In between 40°44'37.96"N, 111°52'25.29"W and 40°44'38.41"N, 111°52'21.04"W	Sampling along the north side of the lake. No odor was detected by technician.
		Hydrogen Sulfide (H ₂ S)	QRAEII	0.0 ppm ²		
		Carbon Monoxide (CO)	QRAEII	0.0 ppm		
Lower Explosive Limit (LEL)		QRAEII	0.0%			

Red Butte Creek Oil Release Air Monitoring Journal

Weather Conditions for:	K7PB Salt Lake City, UT (AS230)				Elev: 4615 ft; Latitude: 40.73067; Longitude: -111.82667					
	Time: (MDT)	Temp. (f)	Dew Point (f)	Relative Humidity (%)	Wind Direction	Wind Speed (mph)	Altimeter Setting (inches)	Station Pressure (inches)	Precip 24 hour (inches)	Quality Control
	28 Jun 12:38 pm	87	51	29	W	2G06	29.68	25.054	0.00	Caution
	28 Jun 12:28 pm	87	48	26	SW	G05	29.69	25.063	0.00	Caution
	28 Jun 12:18 pm	86	50	29	SW	G05	29.70	25.072	0.00	Caution
	28 Jun 12:08 pm	86	50	29	W	3G04	29.70	25.072	0.00	Caution
	28 Jun 11:58 am	85	50	30	SW	G06	29.67	25.045	0.00	Caution
	28 Jun 11:48 am	86	47	26	W	G06	29.67	25.045	0.00	Caution
	28 Jun 11:38 am	84	54	36	W	4G06	29.67	25.045	0.00	Caution
	28 Jun 11:28 am	83	49	31	SSW	1G06	29.68	25.054	0.00	Caution
	28 Jun 11:18 am	82	46	28	SSW	3G06	29.68	25.054	0.00	Caution
	28 Jun 11:08 am	82	48	30	S	2G06	29.68	25.054	0.00	Caution
	28 Jun 10:58 am	82	46	28	S	G06	29.68	25.054	0.00	Caution

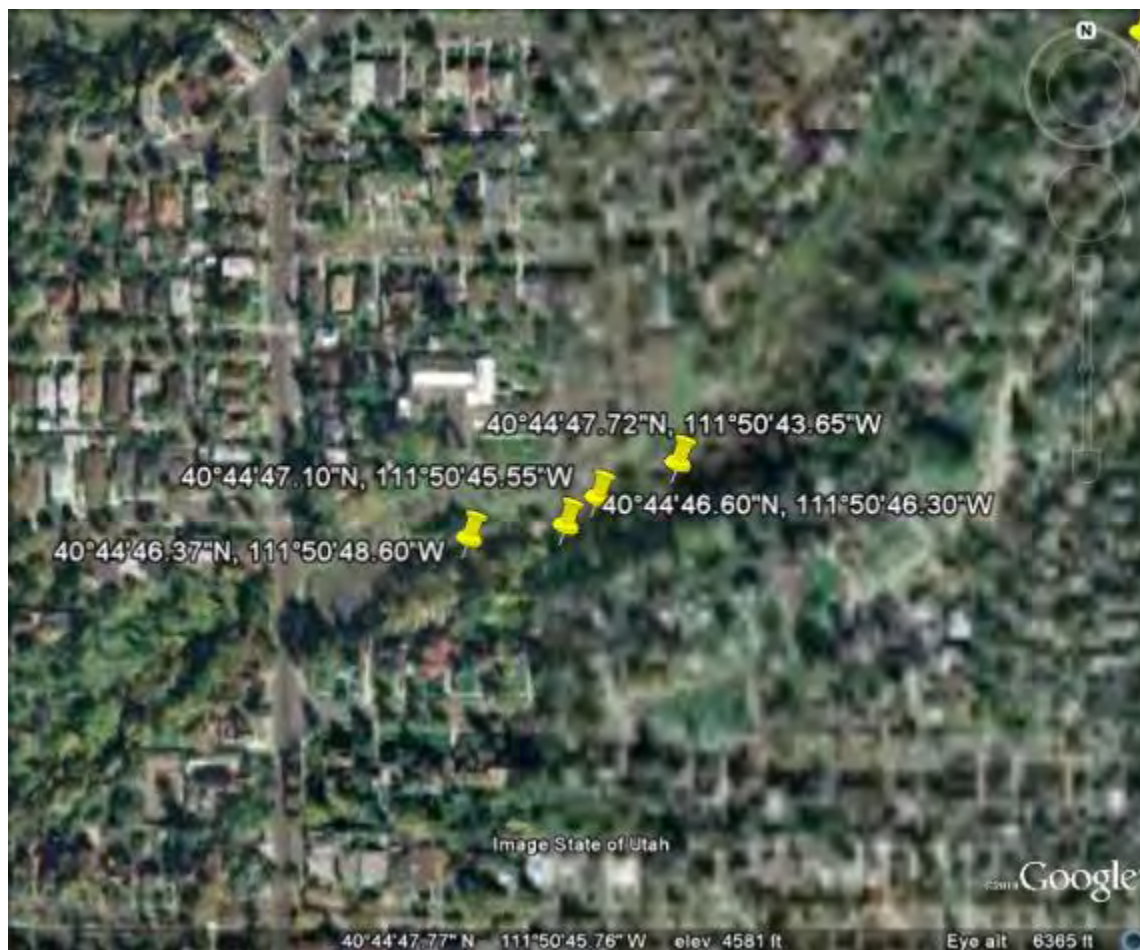
Red Butte Creek Oil Release Air Monitoring Journal

Liberty Park Sample Sites



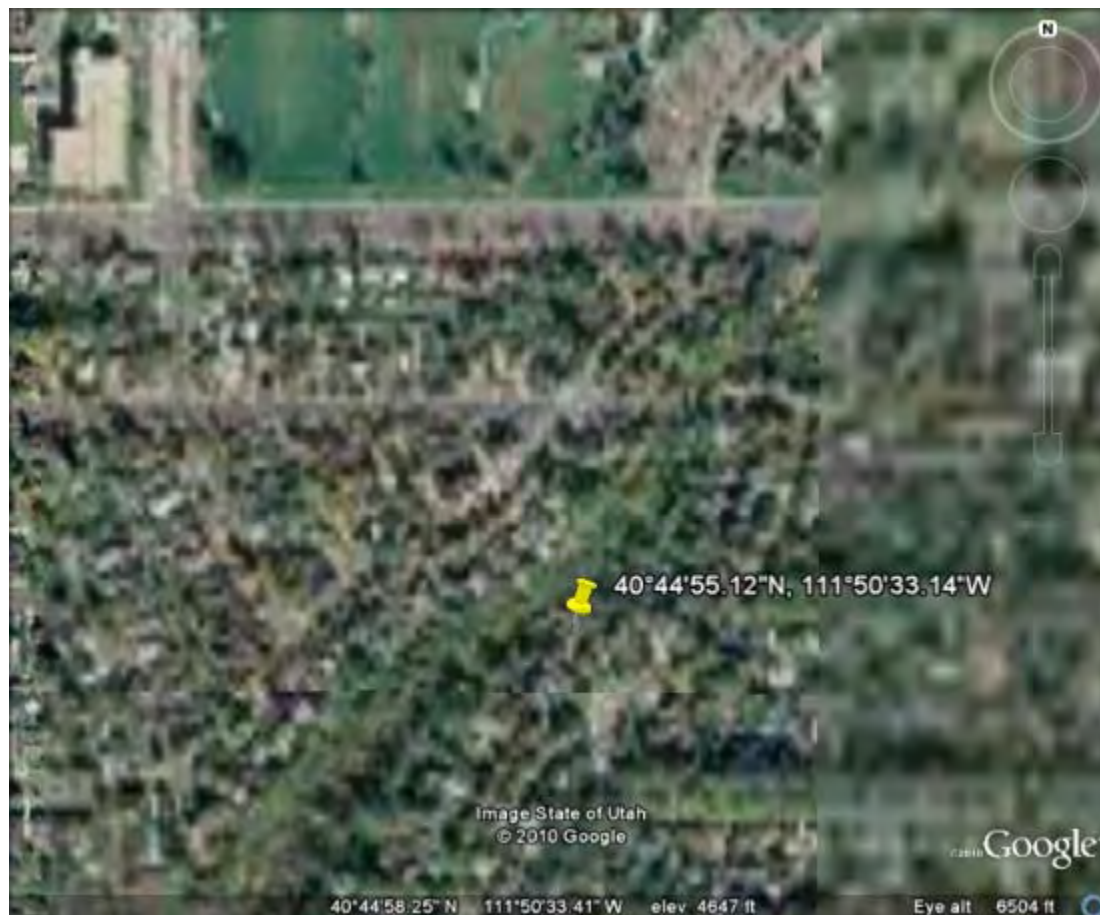
Red Butte Creek Oil Release Air Monitoring Journal

Miller Park Sample Sites



Red Butte Creek Oil Release Air Monitoring Journal

Resident Sample Site at 966 Military



Red Butte Creek Oil Release Air Monitoring Journal

Garden Ward Sample Site at 11th East and Harvard



Red Butte Creek Oil Release Air Monitoring Journal

Sample Site at the Jordan River Confluence

