

Red Butte Creek Oil Release Air Monitoring Journal

Date	Location (Time)	Analyte	Method	Result	GPS Location	Comment	
	Miller Park, along Red Butte Creek (1115-1130)	VOCs	PID	0.3ppm ¹	40°44'46.60"N, 111°50'46.30"W	~50 yards from outlet, on edge of creek	
				0.3 ppm ¹	40°44'47.10"N, 111°50'45.55"W	~75 yards from outlet, 2 ft above creek	
				0.2 ppm ¹	40°44'47.72"N, 111°50'43.65"W	At waterfall on bridge, 12 ft above creek	
		Hydrogen Sulfide (H ₂ S)	QRAEII	0.0 ppm ¹	At all locations along Red Butte Creek at Miller Park. There were no workers scrubbing the creek. Odors were low in this area.		
		Carbon Monoxide (CO)	QRAEII	0.0 ppm			
		Lower Explosive Limit (LEL)	QRAEII	0.0%			
Confluence of Jordan River and Red Butte Creek (1050-1100)	Volatile Organic Compounds (VOCs)	Photo Ionization Detector (PID)	0.0 ppm ¹	40°44'29.75"N, 111°55'3.68"W	At inlet to Jordan River, 3 ft from water. No odors were detected by technician.		
			Hydrogen Sulfide (H ₂ S)			QRAEII	0.0 ppm ²
			Carbon Monoxide (CO)			QRAEII	0.0 ppm
			Lower Explosive Limit (LEL)			QRAEII	0.0%
Garden Park Ward, 1140 East Harvard (1155-1205)	Volatile Organic Compounds (VOCs)	Photo Ionization Detector (PID)	0.0 ppm ¹	40°44'42.01"N, 111°51'29.60"W	At the creek's edge. There were workers in the creek. No odor detected by technician on bridge near the entrance or along creek.		
			Hydrogen Sulfide (H ₂ S)			QRAEII	0.0 ppm ²
			Carbon Monoxide (CO)			QRAEII	0.0 ppm
			Lower Explosive Limit (LEL)			QRAEII	0.0%

¹ 10ppm Hydrogen Sulfide (ceiling) - NIOSH recommended exposure level

Red Butte Creek Oil Release Air Monitoring Journal

Date	Location (Time)	Analyte	Method	Result	GPS Location	Comment
	1100 East Harvard (1140-1155)	Volatile Organic Compounds (VOCs)	Photo Ionization Detector (PID)	4.5 ppm ¹	40°44'42.1"N, 111°51'34.0"W	Sample taken at culvert opening.
		Volatile Organic Compounds (VOCs)	Photo Ionization Detector (PID)	0.1 ppm ¹		North of Harvard where Red Butte Creek goes underneath 1100 East. Faint odors detected by technician.
		Hydrogen Sulfide (H ₂ S)	QRAEII	0.0 ppm ²		
		Carbon Monoxide (CO)	QRAEII	0.0 ppm		
		Lower Explosive Limit (LEL)	QRAEII	0.0%		
		Benzene	Draeger Tube	None Detected		
	Liberty Park (1215-1230)	Volatile Organic Compounds (VOCs)	Photo Ionization Detector (PID)	0.0 ppm ¹	In between 40°44'37.96"N, 111°52'25.29"W and 40°44'38.41"N, 111°52'21.04"W	Sampling along the north side of the lake. No odor was detected by technician. Crews are working in area. aerators are on.
		Hydrogen Sulfide (H ₂ S)	QRAEII	0.0 ppm ²		
		Carbon Monoxide (CO)	QRAEII	0.0 ppm		
		Lower Explosive Limit (LEL)	QRAEII	0.0%		
	Residence of 580 East 1300 South (1205-1210)	Volatile Organic Compounds (VOCs)	Photo Ionization Detector (PID)	0.0 ppm ¹	40°44'29.6"N, 111°51'27.6"W	Sampling in the front yard of this residence. No odor was detected by technician.
Hydrogen Sulfide (H ₂ S)		QRAEII	0.0 ppm ²			
Carbon Monoxide (CO)		QRAEII	0.0 ppm			

Red Butte Creek Oil Release Air Monitoring Journal

Weather Conditions for:	K7PB Salt Lake City, UT (AS230)				Elev: 4615 ft; Latitude: 40.73067; Longitude: -111.82667				
Time: (MDT)	Temp. (f)	Dew	Relative	Wind	Wind	Altimeter	Station	Precip	Quality
		Point (f)	Humidity (%)	Direction	Speed (mph)	Setting (inches)	Pressure (inches)	24 hour (inches)	Control
25 Jun 12:28 pm	89	35	15	S	5G19	29.55	24.941	0.00	Caution
25 Jun 12:18 pm	89	37	16	SW	13G17	29.55	24.941	0.00	Caution
25 Jun 12:08 pm	88	36	16	S	5G17	29.55	24.941	0.00	Caution
25 Jun 11:58 am	88	35	15	SW	3G15	29.56	24.950	0.00	Caution
25 Jun 11:48 am	88	36	16	SSE	8G15	29.57	24.958	0.00	Caution
25 Jun 11:38 am	87	35	16	SW	5G15	29.57	24.958	0.00	Caution
25 Jun 11:28 am	88	36	16	SSW	10G11	29.57	24.958	0.00	Caution
25 Jun 11:18 am	89	44	21	SSE	1G03	29.56	24.950	0.00	Caution
25 Jun 11:08 am	86	42	21	W	G02	29.57	24.958	0.00	Caution
25 Jun 10:58 am	86	36	17	W	G05	29.60	24.984	0.00	Caution
25 Jun 10:48 am	85	43	23	W	2G05	29.61	24.993	0.00	Caution
25 Jun 10:38 am	85	41	21	SE	G04	29.62	25.002	0.00	Caution
25 Jun 10:28 am	85	43	23	SW	G04	29.62	25.002	0.00	Caution

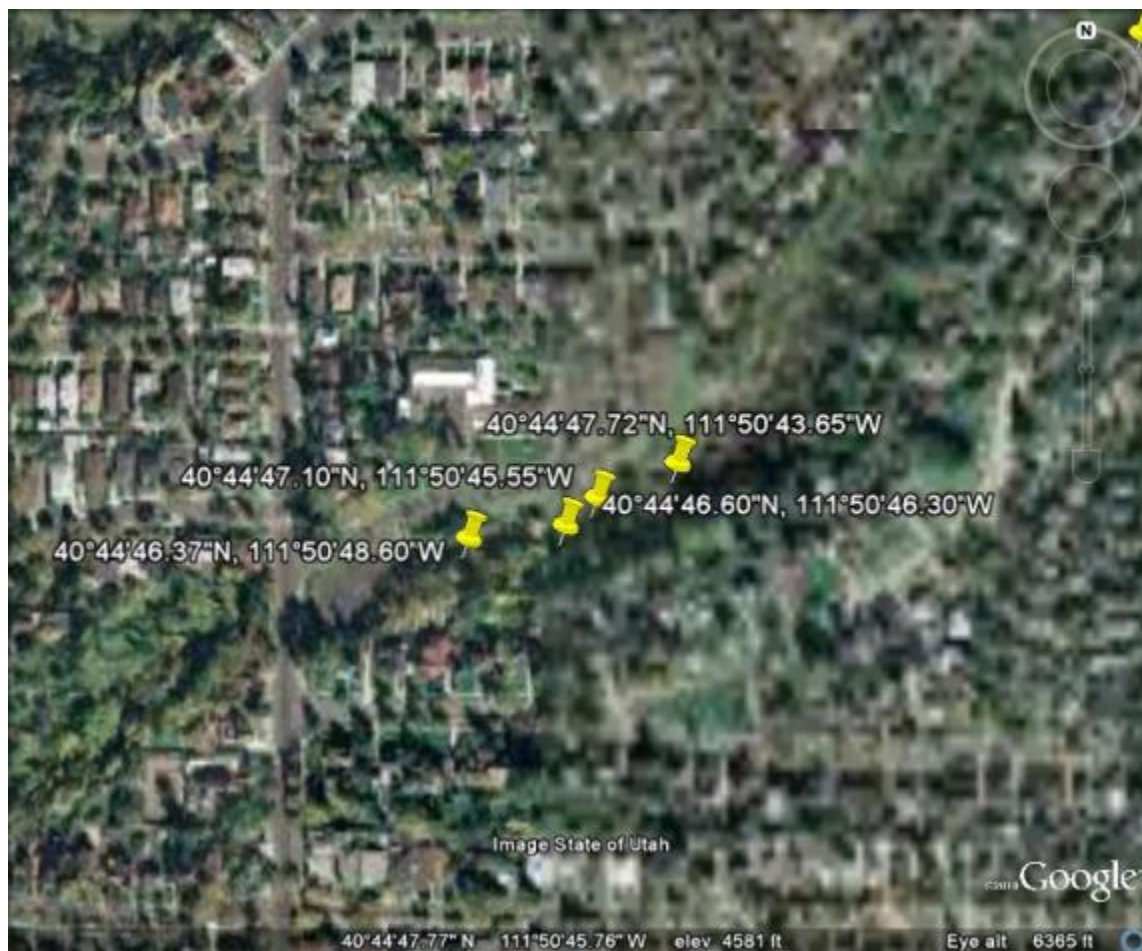
Red Butte Creek Oil Release Air Monitoring Journal

Liberty Park Sample Sites



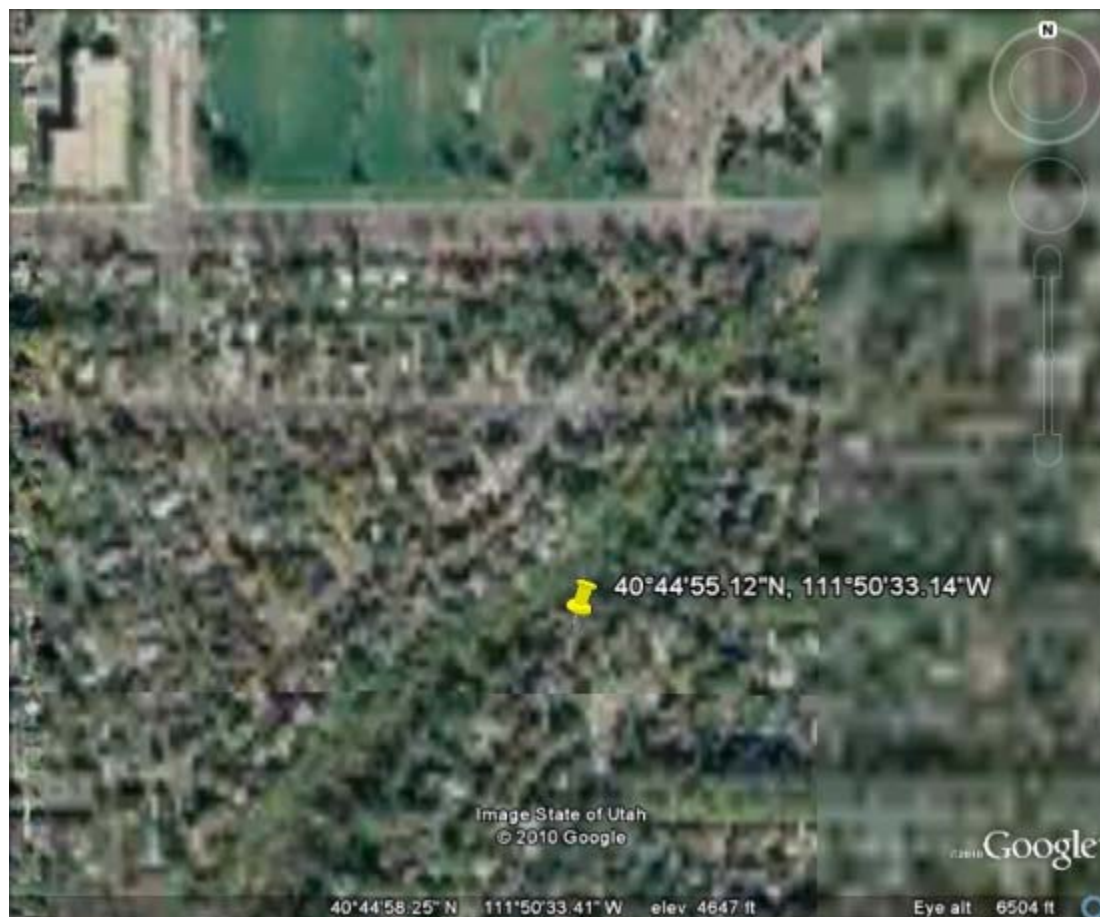
Red Butte Creek Oil Release Air Monitoring Journal

Miller Park Sample Sites



Red Butte Creek Oil Release Air Monitoring Journal

Resident Sample Site at 966 Military



Red Butte Creek Oil Release Air Monitoring Journal

Garden Ward Sample Site at 11th East and Harvard



Red Butte Creek Oil Release Air Monitoring Journal

Sample Site at the Jordan River Confluence

