

### Red Butte Creek Oil Release Air Monitoring Journal

Date	Location (Time)	Analyte	Method	Result	GPS Location	Comment		
6/23/10	Miller Park, along Red Butte Creek (1425-1440)	VOCs	PID	0.1 ppm <sup>1</sup>	40°44'46.37"N, 111°50'48.60"W	~20 yards from outlet from Miller Park, 10 ft above creek		
				0.2 ppm <sup>1</sup>	40°44'46.60"N, 111°50'46.30"W	~50 yards from outlet, on edge of creek		
				0.2-0.5 ppm <sup>1</sup>	40°44'47.10"N, 111°50'45.55"W	~75 yards from outlet, 2 ft above creek		
				0.3 ppm <sup>1</sup>	40°44'47.72"N, 111°50'43.65"W	At waterfall on bridge, 12 ft above creek		
		Hydrogen Sulfide (H <sub>2</sub> S)	QRAEII	0.0 ppm <sup>2</sup>	At all locations along Red Butte Creek at Miller Park. There were no workers scrubbing the creek. Odors were low in this area.			
		Carbon Monoxide (CO)	QRAEII	0.0 ppm				
		Lower Explosive Limit (LEL)	QRAEII	0.0%				
	Confluence of Jordan River and Red Butte Creek (1450-1500)	Volatile Organic Compounds (VOCs)	Photo Ionization Detector (PID)	0.0 ppm <sup>1</sup>	40°44'29.75"N, 111°55'3.68"W	At inlet to Jordan River, 3 ft from water. No odors were detected by technician.		
				Hydrogen Sulfide (H <sub>2</sub> S)			QRAEII	0.0 ppm <sup>2</sup>
				Carbon Monoxide (CO)			QRAEII	0.0 ppm
				Lower Explosive Limit (LEL)			QRAEII	0.0%
	Garden Park Ward, 1140 East Harvard (1410-1415)	Volatile Organic Compounds (VOCs)	Photo Ionization Detector (PID)	0.0 ppm <sup>1</sup>	40°44'42.01"N, 111°51'29.60"W	At the creek's edge. There were workers in the creek. No odor detected by technician on bridge near the entrance or along creek.		
				Hydrogen Sulfide (H <sub>2</sub> S)			QRAEII	0.0 ppm <sup>2</sup>
Carbon Monoxide (CO)				QRAEII			0.0 ppm	
Lower Explosive Limit (LEL)				QRAEII			0.0%	

<sup>1</sup> PID readings for VOCs are used as a screening method to determine contaminants typically associated with crude oil. If high levels of VOCs are detected, additional sampling is conducted

<sup>2</sup> 10ppm Hydrogen Sulfide (ceiling) - NIOSH recommended exposure level

### Red Butte Creek Oil Release Air Monitoring Journal

Date	Location (Time)	Analyte	Method	Result	GPS Location	Comment
6/23/10	1100 East Harvard (1415-1420)	Volatile Organic Compounds (VOCs)	Photo Ionization Detector (PID)	0.4 ppm <sup>1</sup>	40°44'42.1"N, 111°51'34.0"W	Sample taken at culvert opening.
		Volatile Organic Compounds (VOCs)	Photo Ionization Detector (PID)	0.0 ppm <sup>1</sup>		North of Harvard where Red Butte Creek goes underneath 1100 East. Faint odors detected by technician.
		Hydrogen Sulfide (H <sub>2</sub> S)	QRAEII	0.0 ppm <sup>2</sup>		
		Carbon Monoxide (CO)	QRAEII	0.0 ppm		
		Lower Explosive Limit (LEL)	QRAEII	0.0%		
	Liberty Park (1225-1235)	Volatile Organic Compounds (VOCs)	Photo Ionization Detector (PID)	0.0 ppm <sup>1</sup>	In between 40°44'37.96"N, 111°52'25.29"W and 40°44'38.41"N, 111°52'21.04"W	Sampling along the north side of the lake. No odor was detected by technician.
		Hydrogen Sulfide (H <sub>2</sub> S)	QRAEII	0.0 ppm <sup>2</sup>		
		Carbon Monoxide (CO)	QRAEII	0.0 ppm		
		Lower Explosive Limit (LEL)	QRAEII	0.0%		
	Residence of 580 East 1300 South (1255-1305)	Volatile Organic Compounds (VOCs)	Photo Ionization Detector (PID)	0.0 ppm <sup>1</sup>	40°44'29.6"N, 111°51'27.6"W	Sampling in the front yard of this residence. No odor was detected by technician.
		Hydrogen Sulfide (H <sub>2</sub> S)	QRAEII	0.0 ppm <sup>2</sup>		
		Carbon Monoxide (CO)	QRAEII	0.0 ppm		
Lower Explosive Limit (LEL)		QRAEII	0.0%			

**Red Butte Creek Oil Release Air Monitoring Journal**

<b>Date</b>	<b>Location (Time)</b>	<b>Analyte</b>	<b>Method</b>	<b>Result</b>	<b>GPS Location</b>	<b>Comment</b>
6/23/10	Residence of 900 East 1102 South (1340-1405)	Volatile Organic Compounds (VOCs)	Photo Ionization Detector (PID)	0.0-0.2 ppm <sup>1</sup>	unavailable	Sampling in basement of residence
		Volatile Organic Compounds (VOCs)	Photo Ionization Detector (PID)	0.1-1.0 ppm <sup>1</sup>		Sampling at the south end of the lot by Red Butte Creek.
		Hydrogen Sulfide (H <sub>2</sub> S)	QRAEII	0.0 ppm <sup>2</sup>		At all locations at this residence. Faint odors were detected by technician.
		Carbon Monoxide (CO)	QRAEII	0.0 ppm		
		Lower Explosive Limit (LEL)	QRAEII	0.0%		
		Volatile Organic Compounds	Passive Dosimeters	-----		

## Red Butte Creek Oil Release Air Monitoring Journal

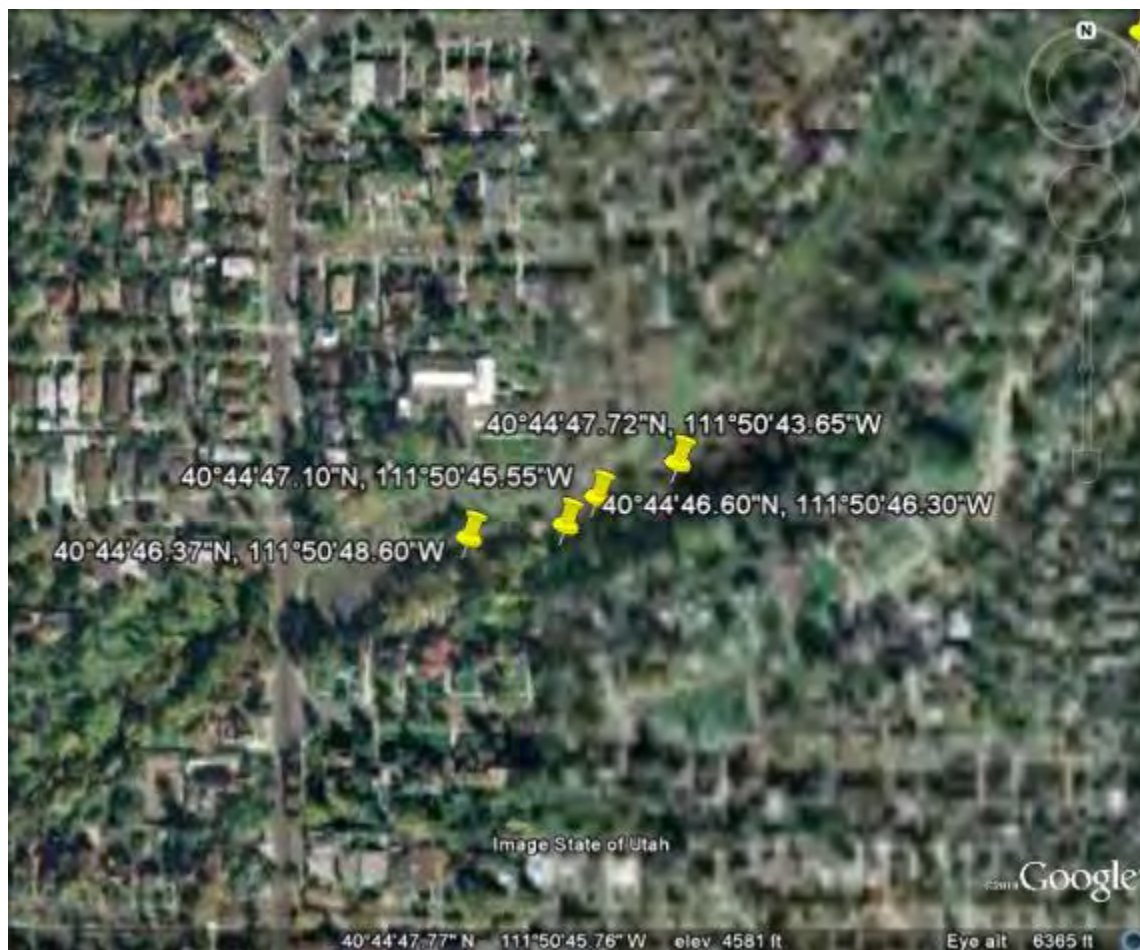
<b>Weather Conditions for:</b>	<b>K7PB Salt Lake City, UT (AS230)</b>				Elev: 4615 ft; Latitude: 40.73067; Longitude: -111.82667				
Time: (MDT)	Temp. (f)	Dew	Relative	Wind	Wind	Altimeter	Station	Precip	Quality
		Point (f)	Humidity (%)	Direction	Speed (mph)	Setting (inches)	Pressure (inches)	24 hour (inches)	Control
23 Jun 3:08 pm	87	44	22	W	2G02	29.76	25.124	0.00	Caution
23 Jun 2:58 pm	87	45	23	W	2G05	29.76	25.124	0.00	Caution
23 Jun 2:48 pm	85	47	27	W	G05	29.77	25.133	0.00	Caution
23 Jun 2:38 pm	85	44	24	W	1G04	29.78	25.141	0.00	Caution
23 Jun 2:28 pm	86	44	23	W	G04	29.78	25.141	0.00	Caution
23 Jun 2:18 pm	86	43	22	W	2G04	29.78	25.141	0.00	Caution
23 Jun 2:08 pm	84	42	23	W	G01	29.78	25.141	0.00	Caution
23 Jun 1:58 pm	85	45	25	W	1G06	29.79	25.150	0.00	Caution
23 Jun 1:48 pm	84	44	25	WNW	3G06	29.78	25.141	0.00	Caution
23 Jun 1:38 pm	86	44	23	NW	G06	29.78	25.141	0.00	Caution
23 Jun 1:28 pm	85	44	24	NE	G06	29.79	25.150	0.00	Caution
23 Jun 1:18 pm	85	47	27	NNW	2G06	29.79	25.150	0.00	Caution
23 Jun 1:08 pm	85	44	24	WNW	G03	29.80	25.159	0.00	Caution
23 Jun 12:58 pm	84	43	24	WNW	G06	29.81	25.167	0.00	Caution
23 Jun 12:48 pm	82	45	27	SE	G06	29.81	25.167	0.00	Caution
23 Jun 12:38 pm	82	46	28	SSE	2G06	29.82	25.176	0.00	Caution
23 Jun 12:28 pm	82	45	27	SSW	G06	29.82	25.176	0.00	Caution
23 Jun 12:18 pm	82	47	29	WSW	2G06	29.82	25.176	0.00	Caution

**Red Butte Creek Oil Release Air Monitoring Journal  
Liberty Park Sample Sites**



# Red Butte Creek Oil Release Air Monitoring Journal

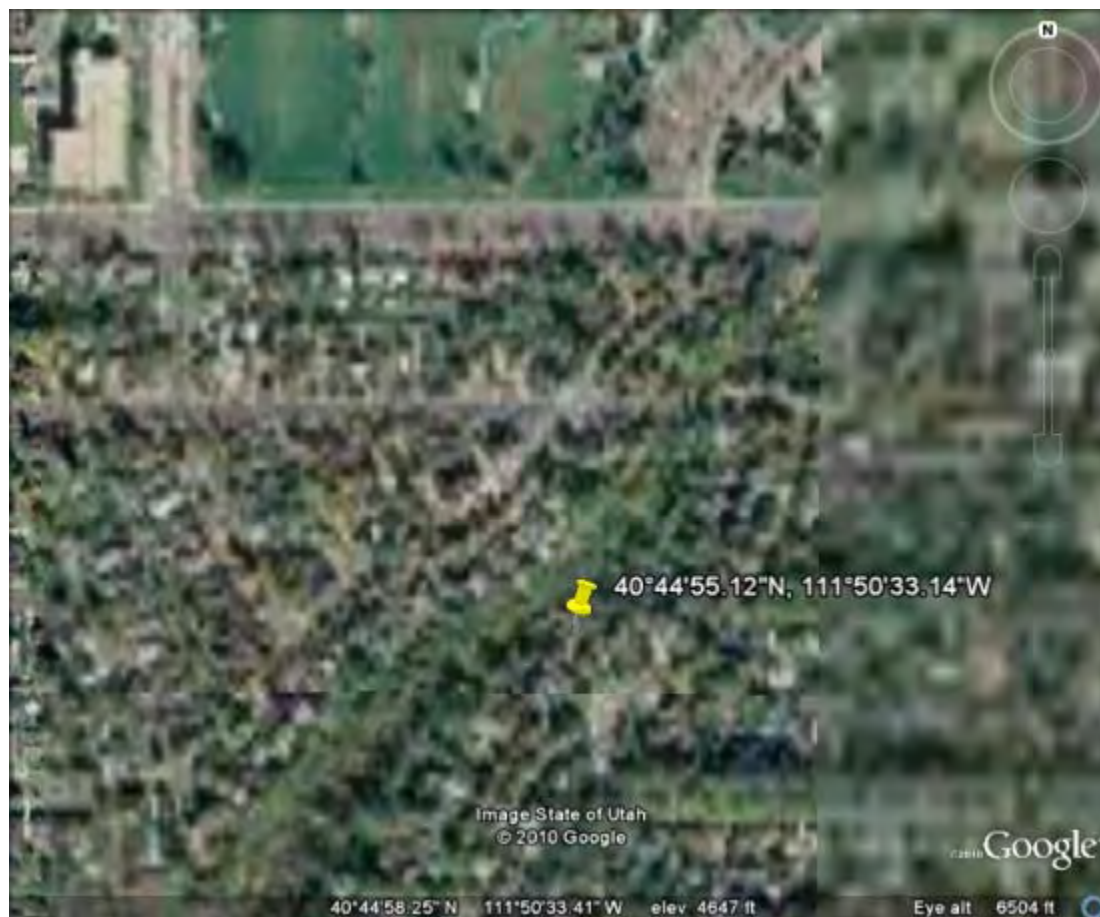
## Miller Park Sample Sites





## Red Butte Creek Oil Release Air Monitoring Journal

### Resident Sample Site at 966 Military



## Red Butte Creek Oil Release Air Monitoring Journal

### Garden Ward Sample Site at 11<sup>th</sup> East and Harvard





## Red Butte Creek Oil Release Air Monitoring Journal

### Sample Site at the Jordan River Confluence

