

Red Butte Creek Oil Release Air Monitoring Journal

Date	Location (Time)	Analyte	Method	Result	GPS Location	Comment		
6/21/10	Miller Park, along Red Butte Creek (1230-1250)	VOCs	PID	0.0 ppm ¹	40°44'46.37"N, 111°50'48.60"W	~20 yards from outlet from Miller Park, 10 ft above creek		
				0.0 ppm ¹	40°44'46.60"N, 111°50'46.30"W	~50 yards from outlet, on edge of creek		
				0.3 ppm ¹	40°44'47.10"N, 111°50'45.55"W	~75 yards from outlet, 2 ft above creek		
				0.1 ppm ¹	40°44'47.72"N, 111°50'43.65"W	At waterfall on bridge, 12 ft above creek		
				0.2 ppm ¹	40°44'47.72"N, 111°50'43.65"W	At waterfall, next to creek		
		Hydrogen Sulfide (H ₂ S)	QRAEII	0.0 ppm ²	At all locations along Red Butte Creek at Miller Park. There were no workers scrubbing the creek. Odors were low in this area.			
		Carbon Monoxide (CO)	QRAEII	0.0 ppm				
		Lower Explosive Limit (LEL)	QRAEII	0.0%				
	Confluence of Jordan River and Red Butte Creek (1115-1125)	Volatile Organic Compounds (VOCs)	Photo Ionization Detector (PID)	0.0 ppm ¹	40°44'29.75"N, 111°55'3.68"W	At inlet to Jordan River, 3 ft from water. Extra barriers present in the area today.		
				Hydrogen Sulfide (H ₂ S)			QRAEII	0.0 ppm ²
				Carbon Monoxide (CO)			QRAEII	0.0 ppm
				Lower Explosive Limit (LEL)			QRAEII	0.0%
	Garden Park Ward, 1140 East Harvard (1215-1220)	Volatile Organic Compounds (VOCs)	Photo Ionization Detector (PID)	0.0-0.0 ppm ¹	40°44'42.01"N, 111°51'29.60"W	At the creek's edge. There were no workers scrubbing the creek.		
Hydrogen Sulfide (H ₂ S)				QRAEII			0.0 ppm ²	
Carbon Monoxide (CO)				QRAEII			0.0 ppm	
Lower Explosive Limit (LEL)				QRAEII			0.0%	

¹ PID readings for VOCs are used as a screening method to determine contaminants typically associated with crude oil. If high levels of VOCs are detected, additional sampling is conducted

² 10ppm Hydrogen Sulfide (ceiling) - NIOSH recommended exposure level

Red Butte Creek Oil Release Air Monitoring Journal

Date	Location (Time)	Analyte	Method	Result	GPS Location	Comment
6/21/10	1100 East Harvard (1220-1225)	Volatile Organic Compounds (VOCs)	Photo Ionization Detector (PID)	0.7 ppm ¹	40°44'42.1"N, 111°51'34.0"W	Sample taken at culvert opening.
		Volatile Organic Compounds (VOCs)	Photo Ionization Detector (PID)	0.0 ppm ¹		North of Harvard where Red Butte Creek goes underneath 1100 East
		Hydrogen Sulfide (H ₂ S)	QRAEII	0.0 ppm ²		
		Carbon Monoxide (CO)	QRAEII	0.0 ppm		
		Lower Explosive Limit (LEL)	QRAEII	0.0%		
	Liberty Park (1140-1150)	Volatile Organic Compounds (VOCs)	Photo Ionization Detector (PID)	0.0 ppm ¹	In between 40°44'37.96"N, 111°52'25.29"W and 40°44'38.41"N, 111°52'21.04"W	Sampling along the north side of the lake. No odor was detected.
		Hydrogen Sulfide (H ₂ S)	QRAEII	0.0 ppm ²		
		Carbon Monoxide (CO)	QRAEII	0.0 ppm		
		Lower Explosive Limit (LEL)	QRAEII	0.0%		
	Residence of 580 East 1300 South (1155-1205)	Volatile Organic Compounds (VOCs)	Photo Ionization Detector (PID)	0.0 ppm ¹	40°44'29.6"N, 111°51'27.6"W	Sampling in the front yard of this residence.
		Hydrogen Sulfide (H ₂ S)	QRAEII	0.0 ppm ²		
		Carbon Monoxide (CO)	QRAEII	0.0 ppm		
		Lower Explosive Limit (LEL)	QRAEII	0.0%		

Red Butte Creek Oil Release Air Monitoring Journal

Date	Location (Time)	Analyte	Method	Result	GPS Location	Comment
6/21/10	Residence of 1350 East Yale (1430-1515)	Volatile Organic Compounds (VOCs)	Photo Ionization Detector (PID)	0.0-0.1 ppm ¹	unavailable	Sampling in Main level of residence.
		Volatile Organic Compounds (VOCs)	Photo Ionization Detector (PID)	0.0-0.1 ppm ¹		Sampling in the loft of the residence.
		Volatile Organic Compounds (VOCs)	Photo Ionization Detector (PID)	0.0 ppm ¹		Sampling in the basement of the residence.
		Volatile Organic Compounds (VOCs)	Photo Ionization Detector (PID)	0.0 ppm ¹		Sampling in the apartment area.
		Volatile Organic Compounds (VOCs)	Photo Ionization Detector (PID)	0.3-0.5 ppm ¹		Sampling at the south end of the lot by Red Butte Creek.
		Hydrogen Sulfide (H ₂ S)	QRAEII	0.0 ppm ²		At all locations at this residence.
		Carbon Monoxide (CO)	QRAEII	0.0 ppm		
		Lower Explosive Limit (LEL)	QRAEII	0.0%		
		Volatile Organic Compounds	Passive Dosimeters	-----		Two passive dosimeters were set up. One outside and one inside of the residence.

Red Butte Creek Oil Release Air Monitoring Journal

Weather Conditions for:	K7PB Salt Lake City, UT (AS230)				Elev: 4615 ft; Latitude: 40.73067; Longitude: -111.82667				
Time: (MDT)	Temp. (f)	Dew Point (f)	Relative Humidity (%)	Wind Direction	Wind Speed (mph)	Altimeter Setting (inches)	Station Pressure (inches)	Precip 24 hour (inches)	Quality Control
21 Jun 3:09 pm	78	50	37	WNW	G05	29.71	25.080	0.00	OK
21 Jun 2:59 pm	76	46	35	WNW	3G09	29.71	25.080	0.00	OK
21 Jun 2:49 pm	77	47	34	NW	2G09	29.71	25.080	0.00	OK
21 Jun 2:39 pm	77	48	36	WNW	1G09	29.71	25.080	0.00	OK
21 Jun 2:29 pm	77	47	34	W	G07	29.72	25.089	0.00	OK
21 Jun 2:19 pm	76	50	40	WNW	3G07	29.73	25.098	0.00	OK
21 Jun 2:09 pm	76	47	36	WNW	2G07	29.73	25.098	0.00	OK
21 Jun 1:59 pm	76	49	38	W	2G11	29.72	25.089	0.00	OK
21 Jun 1:49 pm	76	49	38	W	3G10	29.72	25.089	0.00	OK
21 Jun 1:39 pm	75	47	37	WSW	3G10	29.73	25.098	0.00	OK
21 Jun 1:29 pm	76	51	41	WNW	3G09	29.72	25.089	0.00	OK
21 Jun 1:19 pm	75	48	38	NW	G09	29.73	25.098	0.00	OK
21 Jun 1:09 pm	75	50	42	WNW	3G09	29.73	25.098	0.00	OK
21 Jun 12:59 pm	74	49	42	W	3G10	29.72	25.089	0.00	OK
21 Jun 12:49 pm	74	49	41	WNW	3G09	29.73	25.098	0.00	OK
21 Jun 12:39 pm	74	51	44	W	6G09	29.73	25.098	0.00	OK
21 Jun 12:29 pm	73	49	42	W	6G09	29.73	25.098	0.00	OK
21 Jun 12:19 pm	72	49	44	WNW	G09	29.74	25.106	0.00	OK
21 Jun 12:09 pm	71	47	43	SW	3G09	29.74	25.106	0.00	OK
21 Jun 11:59 am	71	48	44	WNW	4G08	29.71	25.080	0.00	OK
21 Jun 11:49 am	71	47	42	SW	G08	29.71	25.080	0.00	OK
21 Jun 11:39 am	70	47	43	SW	5G08	29.72	25.089	0.00	OK
21 Jun 11:29 am	69	47	46	ENE	2G07	29.72	25.089	0.00	OK
21 Jun 11:19 am	71	47	43	WNW	G07	29.71	25.080	0.00	OK
21 Jun 11:09 am	71	49	45	WSW	3G07	29.71	25.080	0.00	OK
21 Jun 10:59 am	71	49	45	WNW	3G06	29.73	25.098	0.00	OK

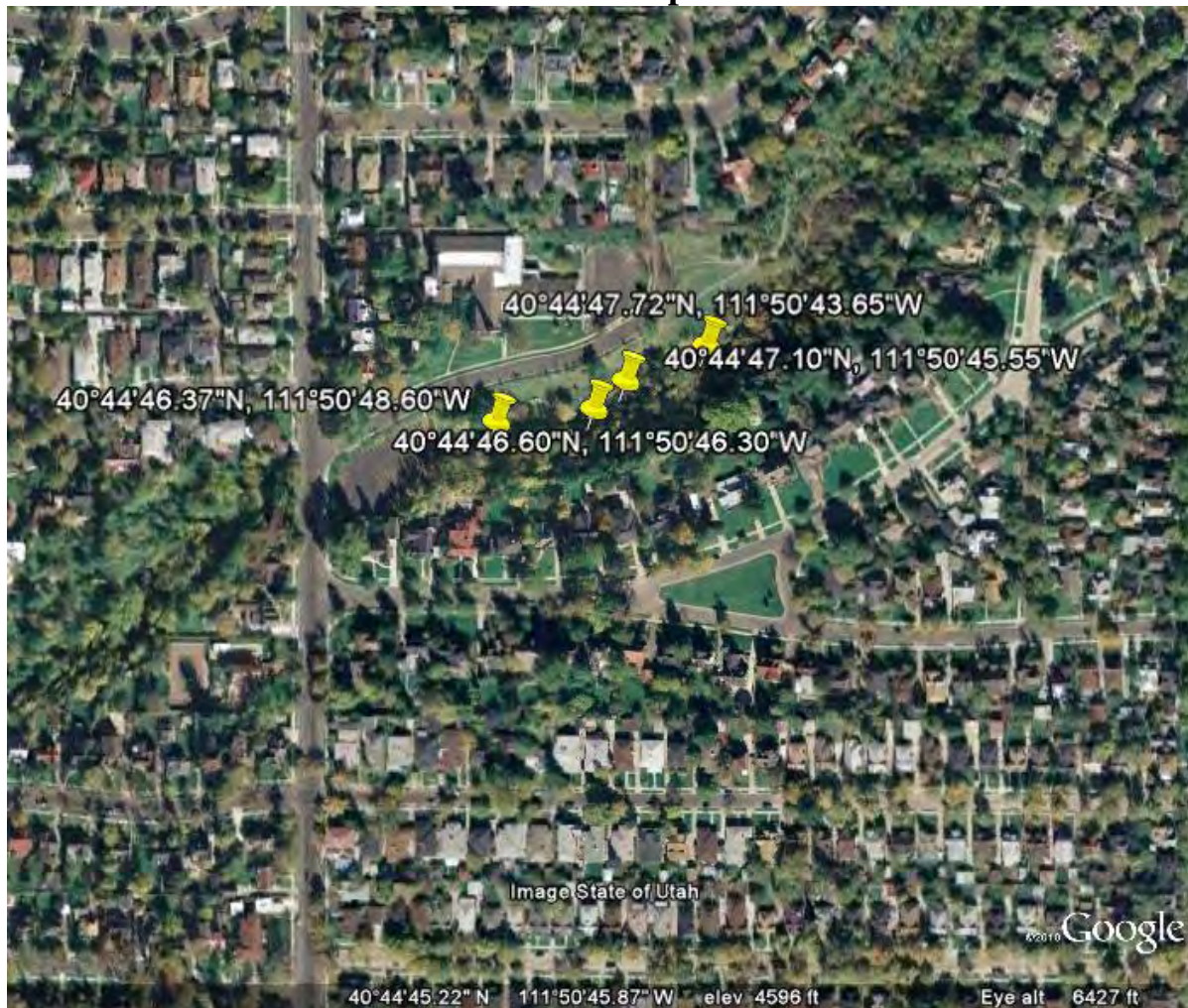
Red Butte Creek Oil Release Air Monitoring Journal

Liberty Park Sample Sites



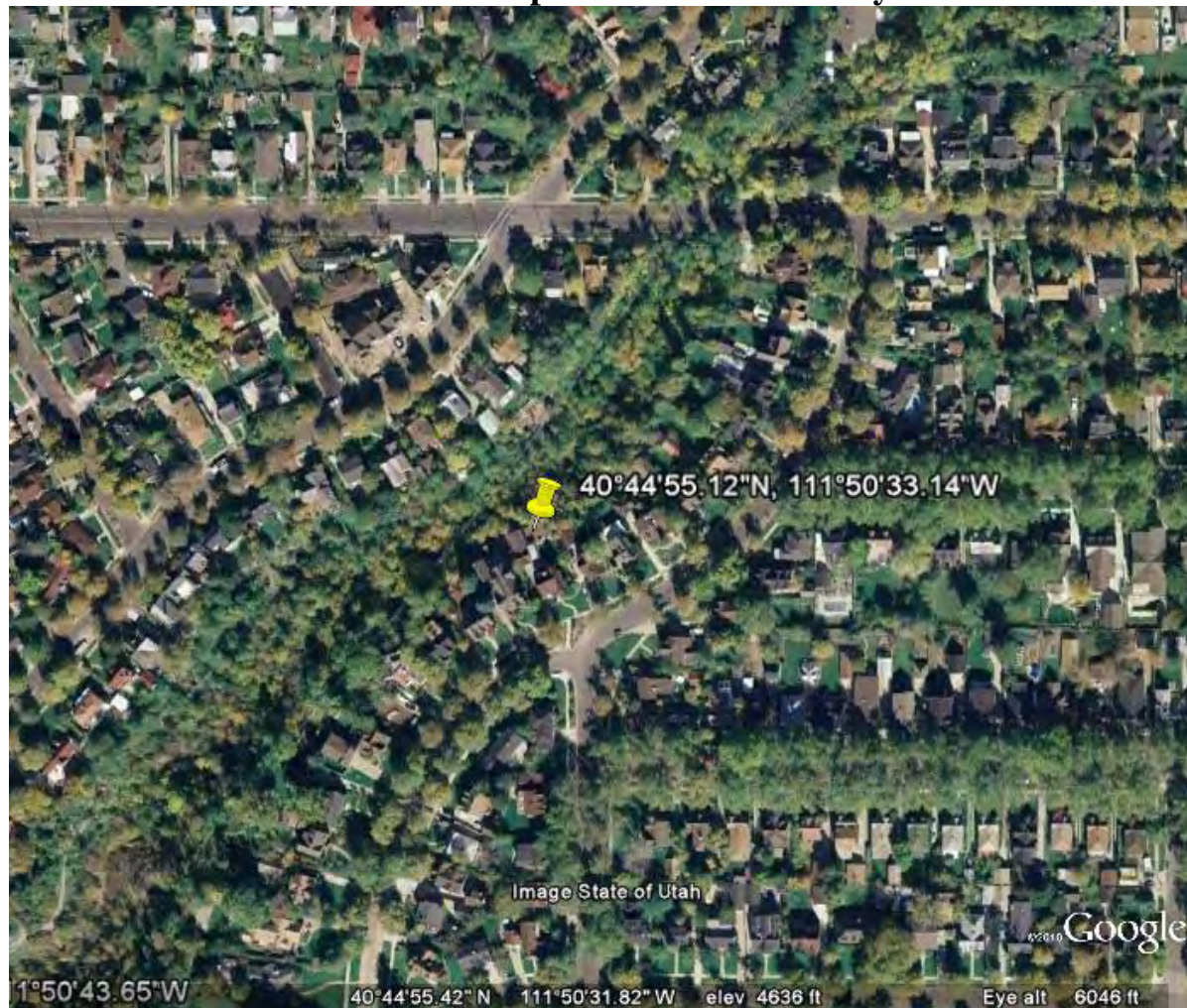
Red Butte Creek Oil Release Air Monitoring Journal

Miller Park Sample Sites



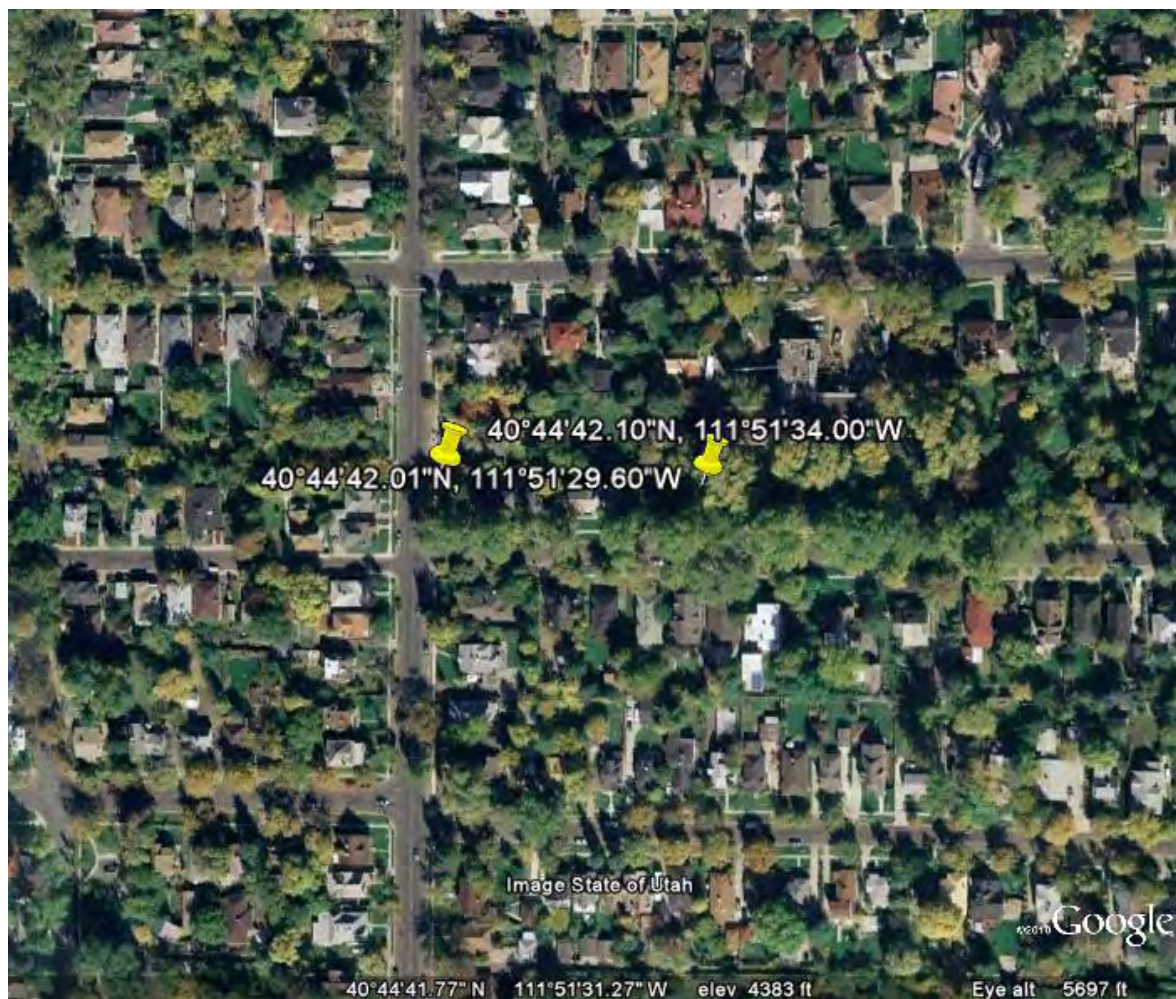
Red Butte Creek Oil Release Air Monitoring Journal

Resident Sample Site at 966 Military



Red Butte Creek Oil Release Air Monitoring Journal

Garden Ward Sample Site at 11th East and Harvard



Red Butte Creek Oil Release Air Monitoring Journal

Sample Site at the Jordan River Confluence

