

Red Butte Creek Oil Release Air Monitoring Journal

Date	Location (Time)	Analyte	Method	Result	GPS Location	Comment		
6/20/10	Miller Park, along Red Butte Creek (0920-0935)	VOCs	PID	0.1 ppm ¹	40°44'46.37"N, 111°50'48.60"W	~20 yards from outlet from Miller Park, 10 ft above creek		
				0.1-0.3 ppm ¹	40°44'46.60"N, 111°50'46.30"W	~50 yards from outlet, on edge of creek		
				0.2-0.3 ppm ¹	40°44'47.10"N, 111°50'45.55"W	~75 yards from outlet, 2 ft above creek		
				0.0 ppm ¹	40°44'47.72"N, 111°50'43.65"W	At waterfall on bridge, 12 ft above creek		
				0.0 ppm ¹	40°44'47.72"N, 111°50'43.65"W	At waterfall, next to creek		
		Hydrogen Sulfide (H ₂ S)	QRAEII	0.0 ppm ²	At all locations along Red Butte Creek at Miller Park. There were no workers scrubbing the creek.			
		Carbon Monoxide (CO)	QRAEII	0.0 ppm				
		Lower Explosive Limit (LEL)	QRAEII	0.0%				
	Confluence of Jordan River and Red Butte Creek (0840-0850)	Volatile Organic Compounds (VOCs)	Photo Ionization Detector (PID)	0.0 ppm ¹	40°44'29.75"N, 111°55'3.68"W	At inlet to Jordan River, 3 ft from water		
				Hydrogen Sulfide (H ₂ S)			QRAEII	0.0 ppm ²
				Carbon Monoxide (CO)			QRAEII	0.0 ppm
				Lower Explosive Limit (LEL)			QRAEII	0.0%
	Garden Park Ward 1140 Harvard (0947-0955)	Volatile Organic Compounds (VOCs)	Photo Ionization Detector (PID)	0.0-0.0 ppm ¹	40°44'42.01"N, 111°51'29.60"W	At the creek's edge. There were no workers scrubbing the creek.		
Hydrogen Sulfide (H ₂ S)				QRAEII			0.0 ppm ²	
Carbon Monoxide (CO)				QRAEII			0.0 ppm	
Lower Explosive Limit (LEL)				QRAEII			0.0%	

¹ PID readings for VOCs are used as a screening method to determine contaminants typically associated with crude oil. If high levels of VOCs are detected, additional sampling is conducted

² 10ppm Hydrogen Sulfide (ceiling) - NIOSH recommended exposure level

Red Butte Creek Oil Release Air Monitoring Journal

Date	Location (Time)	Analyte	Method	Result	GPS Location	Comment
6/20/10	1100 East Harvard (0957-1005)	Volatile Organic Compounds (VOCs)	Photo Ionization Detector (PID)	0.1-0.2 ppm ¹	40°44'42.1"N, 111°51'34.0"W	North of Harvard where Red Butte Creek goes underneath 1100 East
		Hydrogen Sulfide (H ₂ S)	QRAEII	0.0 ppm ²		
		Carbon Monoxide (CO)	QRAEII	0.0 ppm		
		Lower Explosive Limit (LEL)	QRAEII	0.0%		
	Liberty Park (1015-1030)	Volatile Organic Compounds (VOCs)	Photo Ionization Detector (PID)	0.0 ppm ¹	In between 40°44'37.96"N, 111°52'25.29"W and 40°44'38.41"N, 111°52'21.04"W	Sampling along the north side of the lake. No odor was detected.
		Hydrogen Sulfide (H ₂ S)	QRAEII	0.0 ppm ²		
		Carbon Monoxide (CO)	QRAEII	0.0 ppm		
		Lower Explosive Limit (LEL)	QRAEII	0.0%		

Red Butte Creek Oil Release Air Monitoring Journal

Weather Conditions for:

K7PB Salt Lake City, UT (AS230)

Elev: 4615 ft; Latitude: 40.73067;
Longitude: -111.82667

Time (MDT)	Temp. (f)	Dew Point (f)	Relative Humidity (%)	Wind Direction	Wind Speed (mph)	Altimeter Setting (inches)	Station Pressure (inches)	Precip 24 hour (inches)	Quality Control
6/20/2010 11:09	80	34	19	S	3G14	29.59	24.976	0	OK
6/20/2010 10:59	79	32	18	S	3G21	29.6	24.984	0	OK
6/20/2010 10:49	78	31	18	SSW	9G21	29.6	24.984	0	OK
6/20/2010 10:39	78	30	17	SSE	8G21	29.61	24.993	0	OK
6/20/2010 10:29	78	31	18	S	8G21	29.61	24.993	0	OK
6/20/2010 10:19	78	31	18	S	3G21	29.61	24.993	0	OK
6/20/2010 10:09	77	30	18	S	21G21	29.61	24.993	0	OK
6/20/2010 9:59	77	29	17	S	10G18	29.62	25.002	0	OK
6/20/2010 9:49	76	29	18	SSW	11G15	29.62	25.002	0	OK
6/20/2010 9:39	76	32	20	SSW	9G15	29.62	25.002	0	OK
6/20/2010 9:29	76	31	19	S	8G14	29.62	25.002	0	OK
6/20/2010 9:19	76	31	19	SSE	5G14	29.61	24.993	0	OK
6/20/2010 9:09	75	36	24	SSW	5G14	29.62	25.002	0	OK
6/20/2010 8:59	74	35	24	SSW	2G08	29.6	24.984	0	OK
6/20/2010 8:49	74	35	24	SSE	1G06	29.6	24.984	0	OK
6/20/2010 8:39	73	33	23	SE	2G06	29.6	24.984	0	OK
6/20/2010 8:29	72	37	28	SSE	G06	29.61	24.993	0	OK
6/20/2010 8:19	70	37	30	E	G03	29.61	24.993	0	OK
6/20/2010 8:09	68	37	32	E	G03	29.62	25.002	0	OK
6/20/2010 7:59	66	42	41	N	G03	29.6	24.984	0	OK

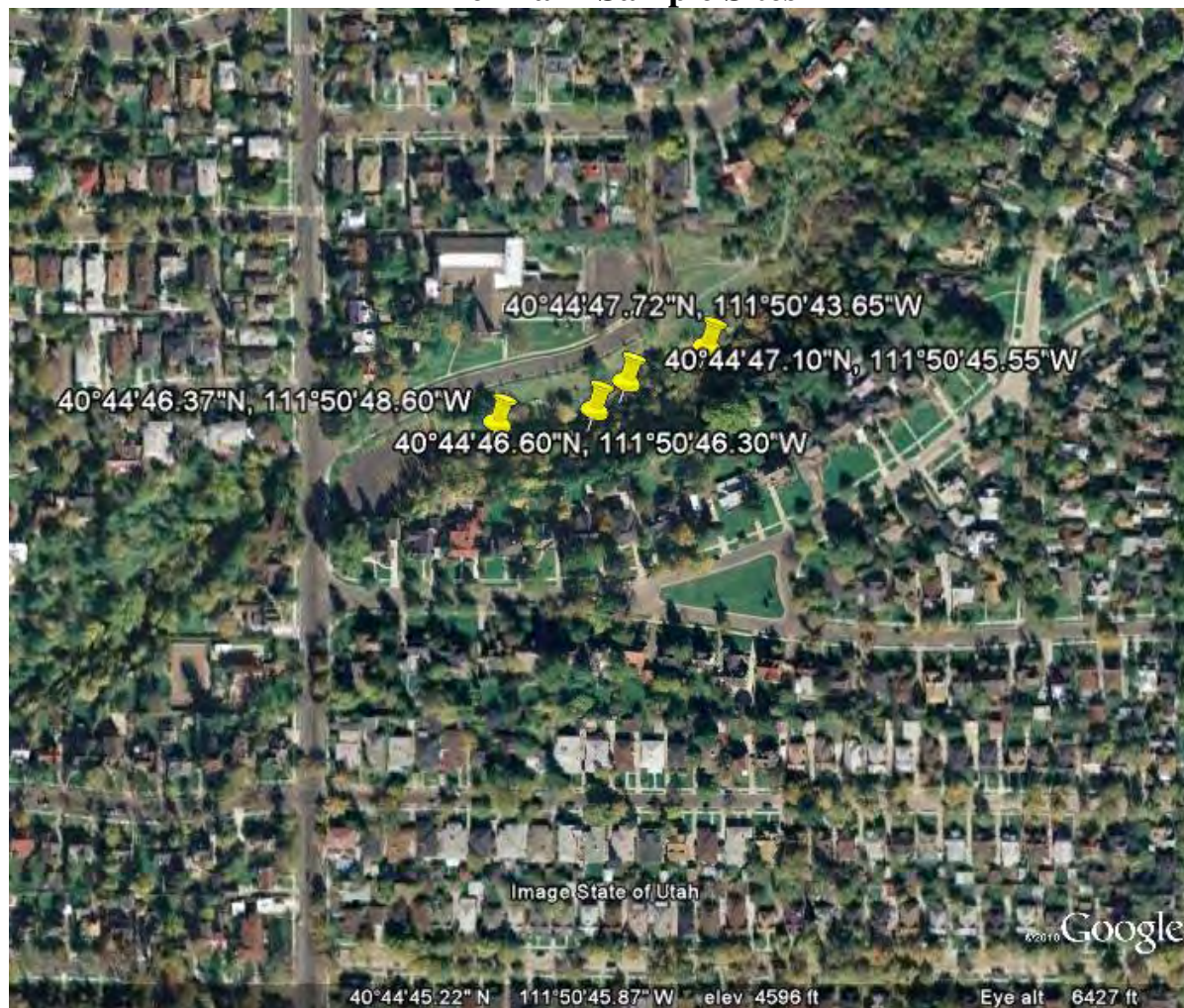
Red Butte Creek Oil Release Air Monitoring Journal

Liberty Park Sample Sites



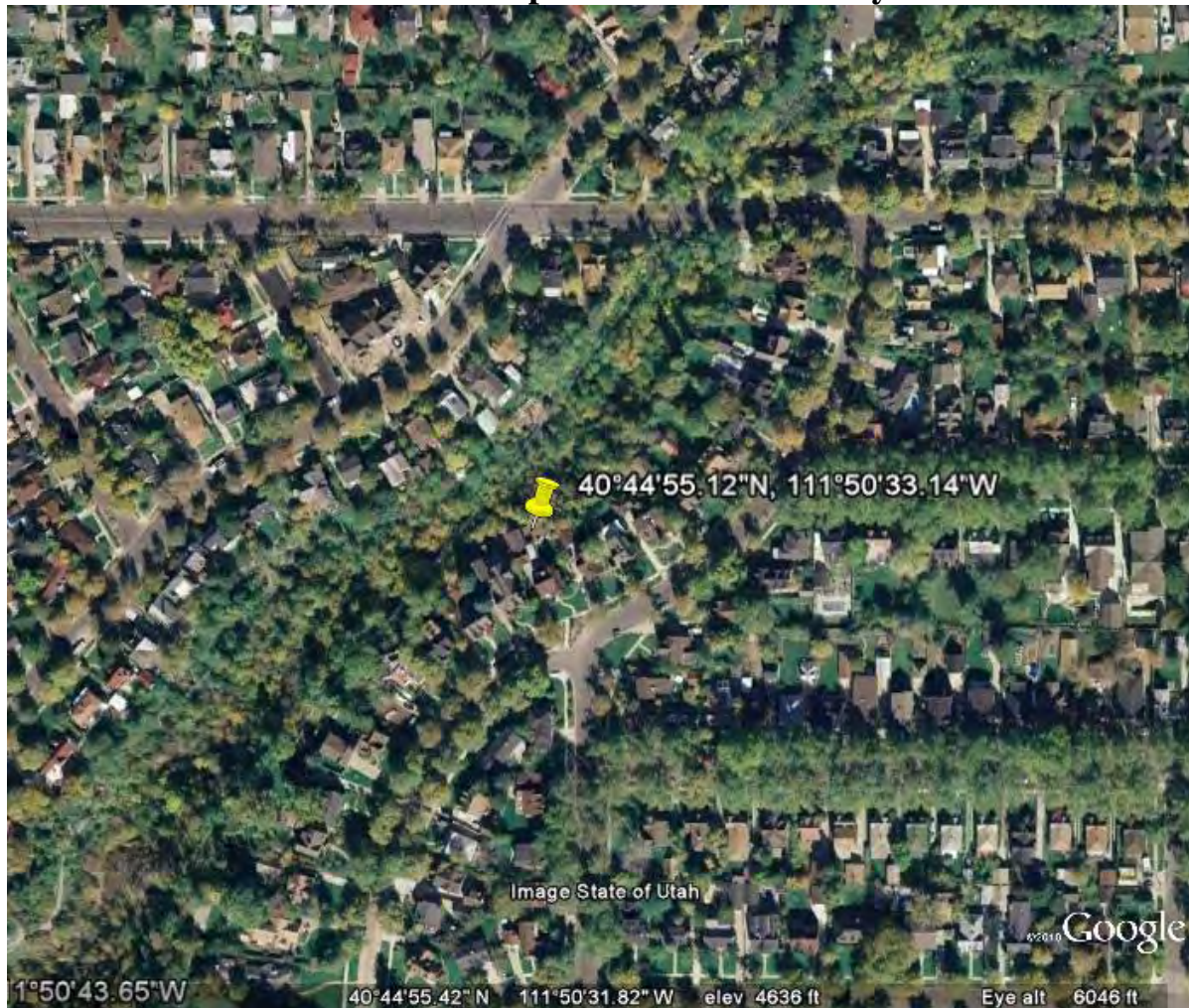
Red Butte Creek Oil Release Air Monitoring Journal

Miller Park Sample Sites



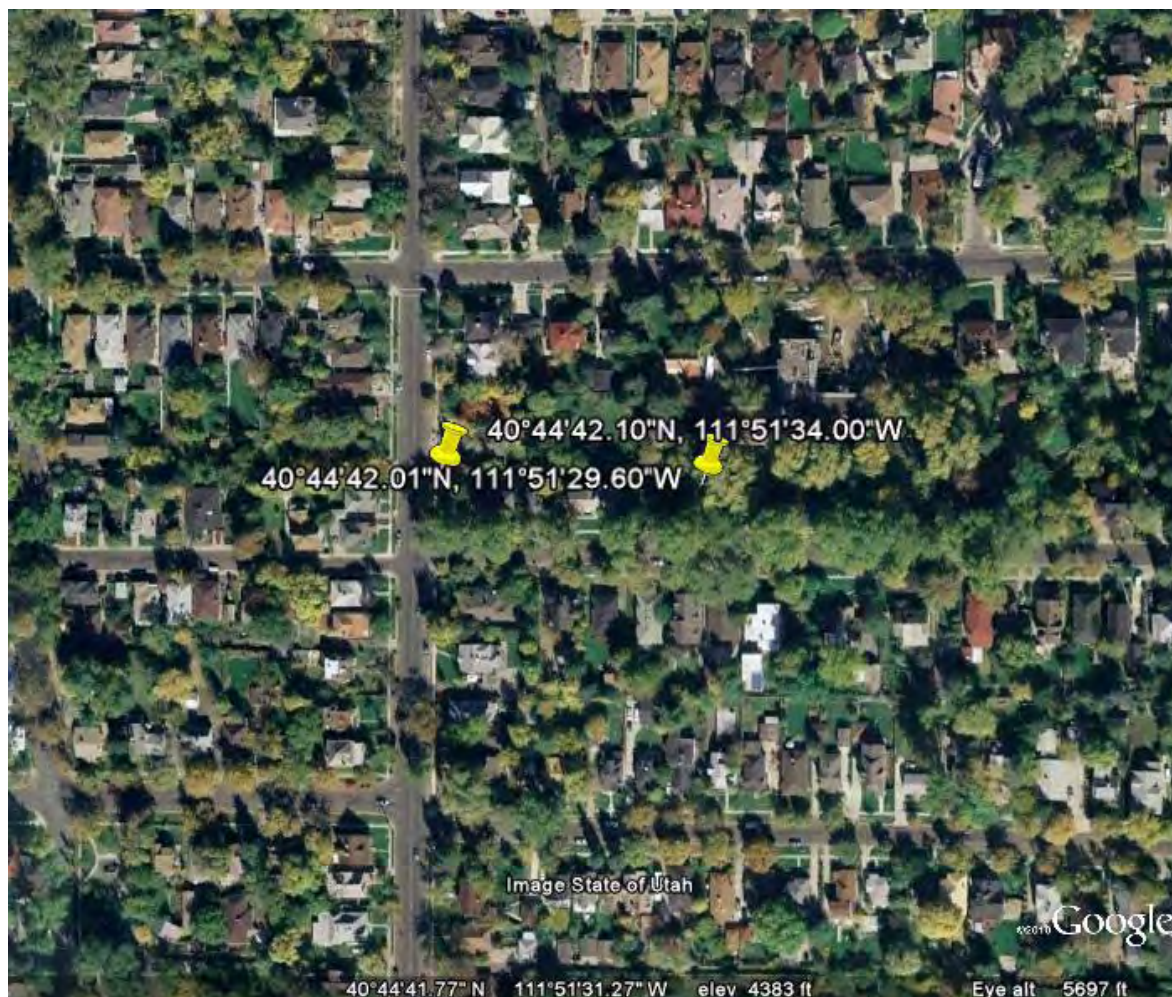
Red Butte Creek Oil Release Air Monitoring Journal

Resident Sample Site at 966 Military



Red Butte Creek Oil Release Air Monitoring Journal

Garden Ward Sample Site at 11th East and Harvard



Red Butte Creek Oil Release Air Monitoring Journal

Sample Site at the Jordan River Confluence

