

Red Butte Creek Oil Release Air Monitoring Journal

Date	Location (Time)	Analyte	Method	Result	GPS Location	Comment	
6/18/10	The residence of 580 East 1300 South (1330-1345)	Volatile Organics	Passive Dosimeter	----	40°44'29.6"N, 111°52'27.6"W	Set up two samples- one on the NW corner of the lot, and one inside of the residence. This is a 24 hour test.	
	Miller Park, along Red Butte Creek (1445-1500)	VOCs	PID	0.0 ppm ¹	40°44'46.37"N, 111°50'48.60"W	~20 yards from outlet from Miller Park, 10 ft above creek	
				0.0 ppm ¹	40°44'46.60"N, 111°50'46.30"W	~50 yards from outlet, on edge of creek	
				0.3-1.4 ppm ¹	40°44'47.10"N, 111°50'45.55"W	~75 yards from outlet, 2 ft above creek	
				2.5-4.0 ppm ¹	40°44'47.72"N, 111°50'43.65"W	At waterfall on bridge, 12 ft above creek	
				4.5-5.6 ppm ¹	40°44'47.72"N, 111°50'43.65"W	At waterfall, next to creek	
		Hydrogen Sulfide (H ₂ S)	QRAEII	0.0 ppm ²	At all locations along Red Butte Creek at Miller Park. Crews were cleaning east of the bridge. Smell became stronger as we walked upstream.		
		Carbon Monoxide (CO)	QRAEII	0.0 ppm			
	Lower Explosive Limit (LEL)	QRAEII	0.0%				
	Confluence of Jordan River and Red Butte Creek (1425-1435)	Volatile Organic Compounds (VOCs)	Photo Ionization Detector (PID)	0.2-0.6ppm ¹	40°44'29.75"N, 111°55'3.68"W	At inlet to Jordan River, 3 ft from water	
		Hydrogen Sulfide (H ₂ S)	QRAEII	0.0 ppm ²			
		Carbon Monoxide (CO)	QRAEII	0.0 ppm			
Lower Explosive Limit (LEL)		QRAEII	0.0%				

¹ PID readings for VOCs are used as a screening method to determine contaminants typically associated with crude oil. If high levels of VOCs are detected, additional sampling is conducted

² 10ppm Hydrogen Sulfide (ceiling)- NIOSH recommended exposure level

Red Butte Creek Oil Release Air Monitoring Journal

Date	Location (Time)	Analyte	Method	Result	GPS Location	Comment
6/18/10	Garden Park Ward 1140 Harvard (1510-1515)	Volatile Organic Compounds (VOCs)	Photo Ionization Detector (PID)	0.0-0.0 ppm ¹	40°44'42.01"N, 111°51'29.60"W	At the creek's edge. There were no workers scrubbing the creek.
		Hydrogen Sulfide (H ₂ S)	QRAEII	0.0 ppm ²		
		Carbon Monoxide (CO)	QRAEII	0.0 ppm		
		Lower Explosive Limit (LEL)	QRAEII	0.0%		
	1100 East Harvard (1520-1530)	Volatile Organic Compounds (VOCs)	Photo Ionization Detector (PID)	0.0-0.0 ppm ¹	40°44'42.1"N, 111°51'34.0"W	North of Harvard where Red Butte Creek goes underneath 1100 East
		Hydrogen Sulfide (H ₂ S)	QRAEII	0.0 ppm ²		
		Carbon Monoxide (CO)	QRAEII	0.0 ppm		
		Lower Explosive Limit (LEL)	QRAEII	0.0%		

Red Butte Creek Oil Release Air Monitoring Journal

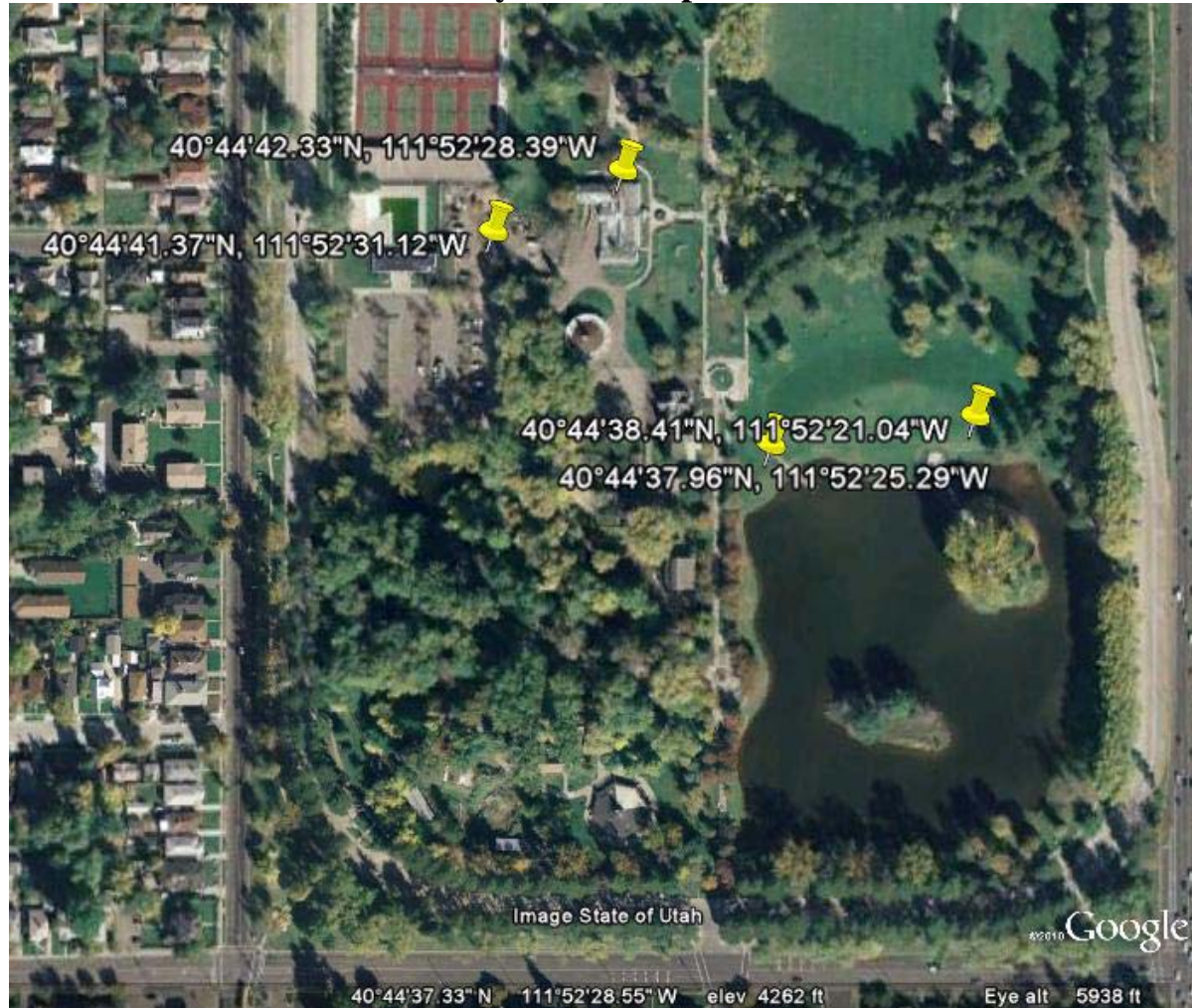
Weather Conditions for: K7PB Salt Lake City, UT
(AS230)

Elev: 4615 ft; Latitude: 40.73067;
Longitude: -111.82667

Time: (MDT)	Temp. (f)	Dew Point (f)	Relative Humidity (%)	Wind Direction	Wind Speed (mph)	Altimeter Setting (inches)	Station Pressure (inches)	Precip 24 hour (inches)	Quality Control
18 Jun 3:38 pm	82	42	24	W	3G09	29.66	25.037	0.00	OK
18 Jun 3:28 pm	82	39	22	NNE	G09	29.66	25.037	0.00	OK
18 Jun 3:18 pm	81	46	29	W	2G06	29.67	25.045	0.00	OK
18 Jun 3:08 pm	81	47	30	W	2G06	29.67	25.045	0.00	OK
18 Jun 2:58 pm	81	46	29	WNW	2G09	29.67	25.045	0.00	OK
18 Jun 2:48 pm	80	38	22	W	G09	29.69	25.063	0.00	OK
18 Jun 2:38 pm	80	42	26	W	5G09	29.70	25.072	0.00	OK
18 Jun 2:28 pm	79	40	25	WNW	G09	29.70	25.072	0.00	OK
18 Jun 2:18 pm	78	39	25	W	4G05	29.71	25.080	0.00	OK
18 Jun 2:08 pm	78	40	26	S	2G05	29.72	25.089	0.00	OK
18 Jun 1:58 pm	77	39	25	WSW	3G06	29.71	25.080	0.00	OK

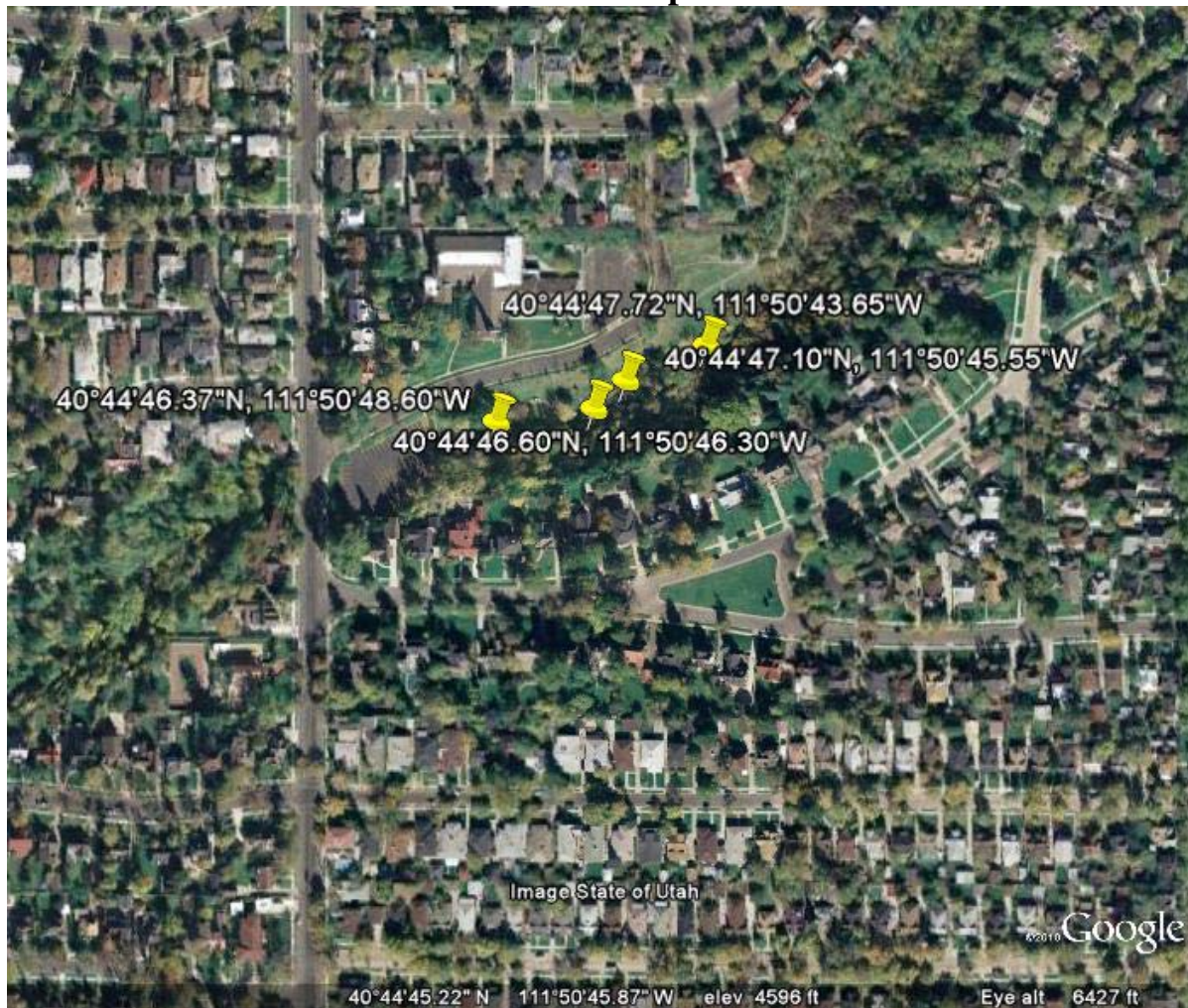
Red Butte Creek Oil Release Air Monitoring Journal

Liberty Park Sample Sites



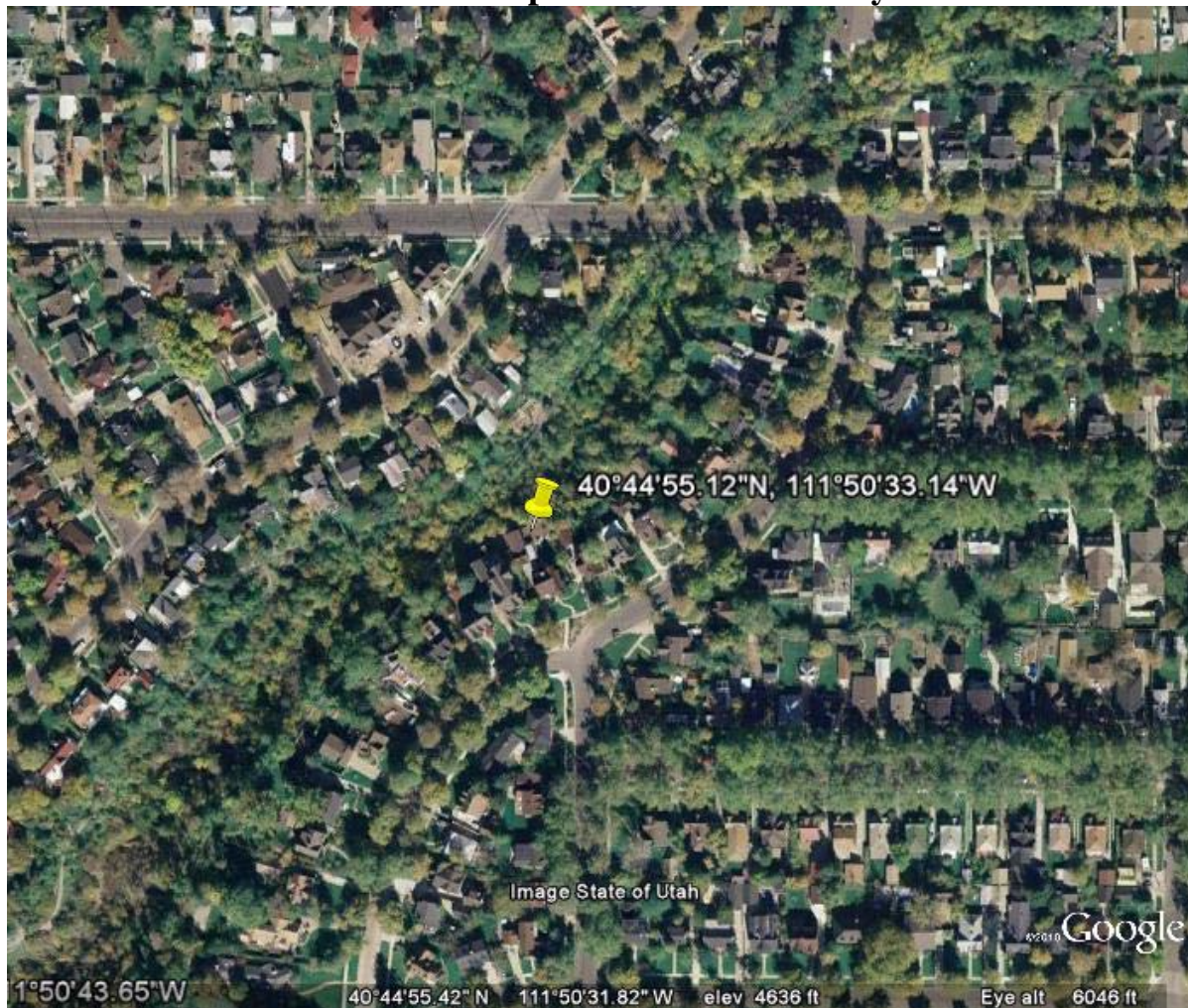
Red Butte Creek Oil Release Air Monitoring Journal

Miller Park Sample Sites



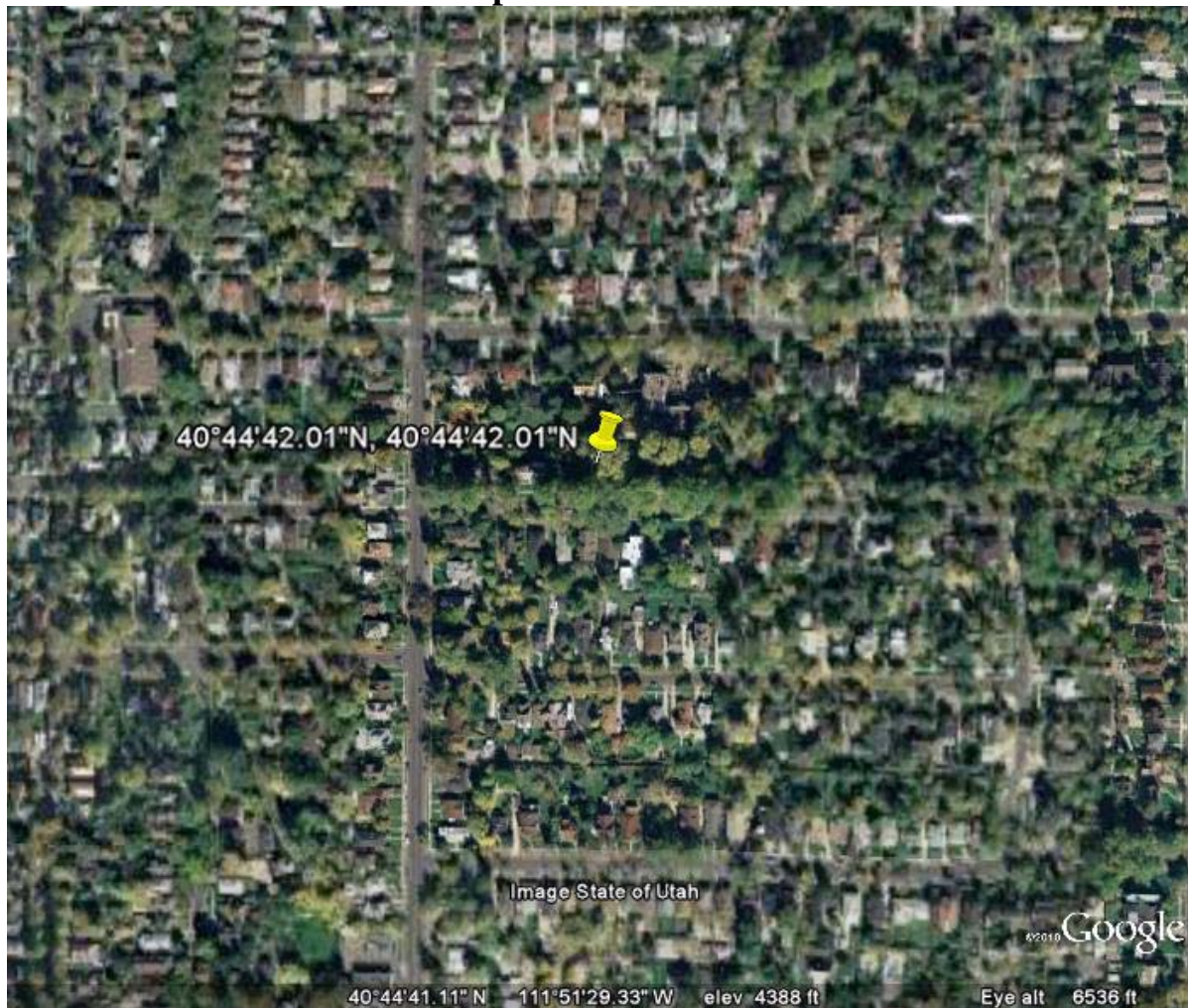
Red Butte Creek Oil Release Air Monitoring Journal

Resident Sample Site at 966 Military



Red Butte Creek Oil Release Air Monitoring Journal

Garden Ward Sample Site at 11th East and Harvard



Red Butte Creek Oil Release Air Monitoring Journal

Sample Site at the Jordan River Confluence

