

Red Butte Creek Oil Release Air Monitoring Journal

Date	Location (Time)	Analyte	Method	Result	GPS Location	Comment		
8/5/10	Miller Park, along Red Butte Creek (1430-1450)	Volatile Organic Compounds (VOCs)	PID	0.0 ppm ¹	40°44'46.37"N, 111°50'48.60"W	~20 yards from outlet from Miller Park, 10 ft above creek		
				0.0 ppm ¹	40°44'46.60"N, 111°50'46.30"W	~50 yards from outlet, on edge of creek		
				0.0 ppm ¹	40°44'47.10"N, 111°50'45.55"W	~75 yards from outlet, 2 ft above creek		
				0.0 ppm ¹	40°44'47.72"N, 111°50'43.65"W	At waterfall on bridge, 12 ft above creek		
		Hydrogen Sulfide (H ₂ S)	QRAEII	0.0 ppm ²	No odor detected. Water levels were moderate. No crews working in this area.			
		Carbon Monoxide (CO)	QRAEII	0.0 ppm				
		Lower Explosive Limit (LEL)	QRAEII	0.0%				
	Confluence of Jordan River and Red Butte Creek (1530-1535)	Volatile Organic Compounds (VOCs)	Photo Ionization Detector (PID)	0.0 ppm ¹	40°44'29.75"N, 111°55'3.68"W	At inlet to Jordan River, 3 ft from water. No odors were detected. Brown film is built up around the barriers. No crews working in this area.		
				Hydrogen Sulfide (H ₂ S)			QRAEII	0.0 ppm ²
				Carbon Monoxide (CO)			QRAEII	0.0 ppm
				Lower Explosive Limit (LEL)			QRAEII	0.0%
	Garden Park Ward, 1140 East Harvard (1445-1450)	Volatile Organic Compounds (VOCs)	Photo Ionization Detector (PID)	0.0 ppm ¹	40°44'42.01"N, 111°51'29.60"W	At the creek's edge. No crews were working in this area. No odor detected by technician. Water level was moderate.		
				Hydrogen Sulfide (H ₂ S)			QRAEII	0.0 ppm ²
Carbon Monoxide (CO)				QRAEII			0.0 ppm	
Lower Explosive Limit (LEL)				QRAEII			0.0%	

¹ PID readings for VOCs are used as a screening method to determine contaminants typically associated with crude oil. If high levels of VOCs are detected, additional sampling is conducted

² 10ppm Hydrogen Sulfide (ceiling) - NIOSH recommended exposure level

Red Butte Creek Oil Release Air Monitoring Journal

Date	Location (Time)	Analyte	Method	Result	GPS Location	Comment
8/5/10	1100 East Harvard (1450-1455)	Volatile Organic Compounds (VOCs)	Photo Ionization Detector (PID)	0.0 ppm ¹	40°44'42.1"N, 111°51'34.0"W	Sample taken at culvert opening.
		Volatile Organic Compounds (VOCs)	Photo Ionization Detector (PID)	0.0 ppm ¹		North of Harvard where Red Butte Creek goes underneath 1100 East. No odors detected by technician. Water level was Moderate. No crews were working in area.
		Hydrogen Sulfide (H ₂ S)	QRAEII	0.0 ppm ²		
		Carbon Monoxide (CO)	QRAEII	0.0 ppm		
		Lower Explosive Limit (LEL)	QRAEII	0.0%		
	Liberty Park (1505-1510)	Volatile Organic Compounds (VOCs)	Photo Ionization Detector (PID)	0.0 ppm ¹	In between 40°44'37.96"N, 111°52'25.29"W and 40°44'38.41"N, 111°52'21.04"W	Sampling along the north side of the lake. No odor was detected by technician. Crews were working in and around lake.
		Hydrogen Sulfide (H ₂ S)	QRAEII	0.0 ppm ²		
		Carbon Monoxide (CO)	QRAEII	0.0 ppm		
		Lower Explosive Limit (LEL)	QRAEII	0.0%		
	Residence of 580 East 1300 South (1510-1515)	Volatile Organic Compounds (VOCs)	Photo Ionization Detector (PID)	0.0 ppm ¹	40°44'29.6"N, 111°51'27.6"W	Sampling in the front yard of this residence NW side of lot. No odor was detected by technician
		Hydrogen Sulfide (H ₂ S)	QRAEII	0.0 ppm ²		
		Carbon Monoxide (CO)	QRAEII	0.0 ppm		
Lower Explosive Limit (LEL)		QRAEII	0.0%			

Red Butte Creek Oil Release Air Monitoring Journal

Weather Conditions for:		K7PB Salt Lake City, UT (AS230)			Elev: 4615 ft; Latitude: 40.73067; Longitude: -111.82667				
Time: (MDT)	Temp. (f)	Dew	Relative	Wind	Wind	Altimeter	Station	Precip	Quality
		Point (f)	Humidity (%)	Direction	Speed (mph)	Setting (inches)	Pressure (inches)	24 hour (inches)	Control
05 Aug 3:31 pm	90	53	28	SW	1G14	29.59	24.976	0.03	OK
05 Aug 3:21 pm	91	50	25	WSW	6G11	29.59	24.976	0.03	OK
05 Aug 3:11 pm	90	53	28	SSW	4G11	29.60	24.984	0.03	OK
05 Aug 3:01 pm	91	53	28	S	6G15	29.59	24.976	0.03	OK
05 Aug 2:51 pm	91	54	29	SW	10G15	29.59	24.976	0.03	OK
05 Aug 2:41 pm	90	52	27	WSW	4G10	29.60	24.984	0.03	OK
05 Aug 2:31 pm	89	55	31	SW	1G08	29.61	24.993	0.03	OK
05 Aug 2:21 pm	89	53	29	ESE	5G06	29.61	24.993	0.03	OK
05 Aug 2:11 pm	88	53	30	S	G06	29.62	25.002	0.03	OK
05 Aug 2:01 pm	88	55	32	SW	2G10	29.62	25.002	0.03	OK

Red Butte Creek Oil Release Air Monitoring Journal

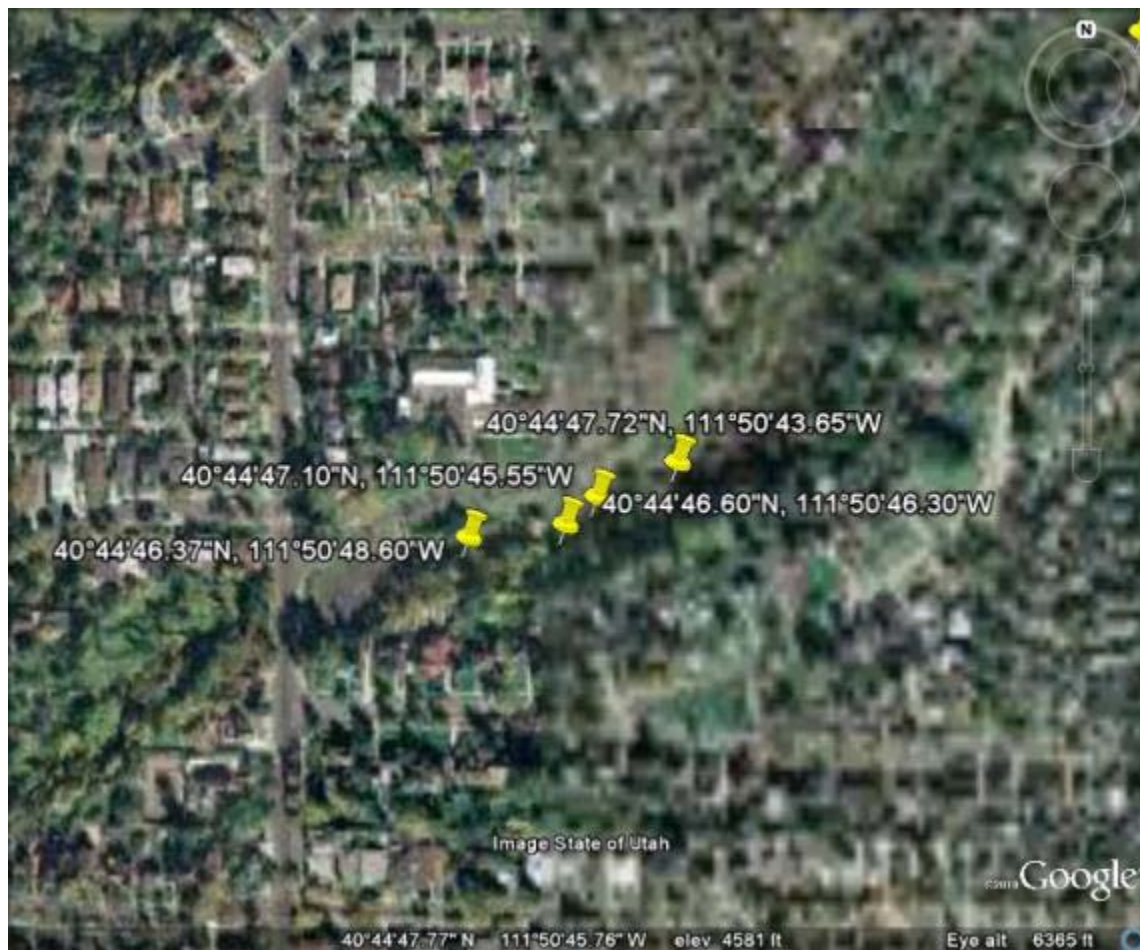
Liberty Park Sample Sites

Red Butte Creek Oil Release Air Monitoring Journal



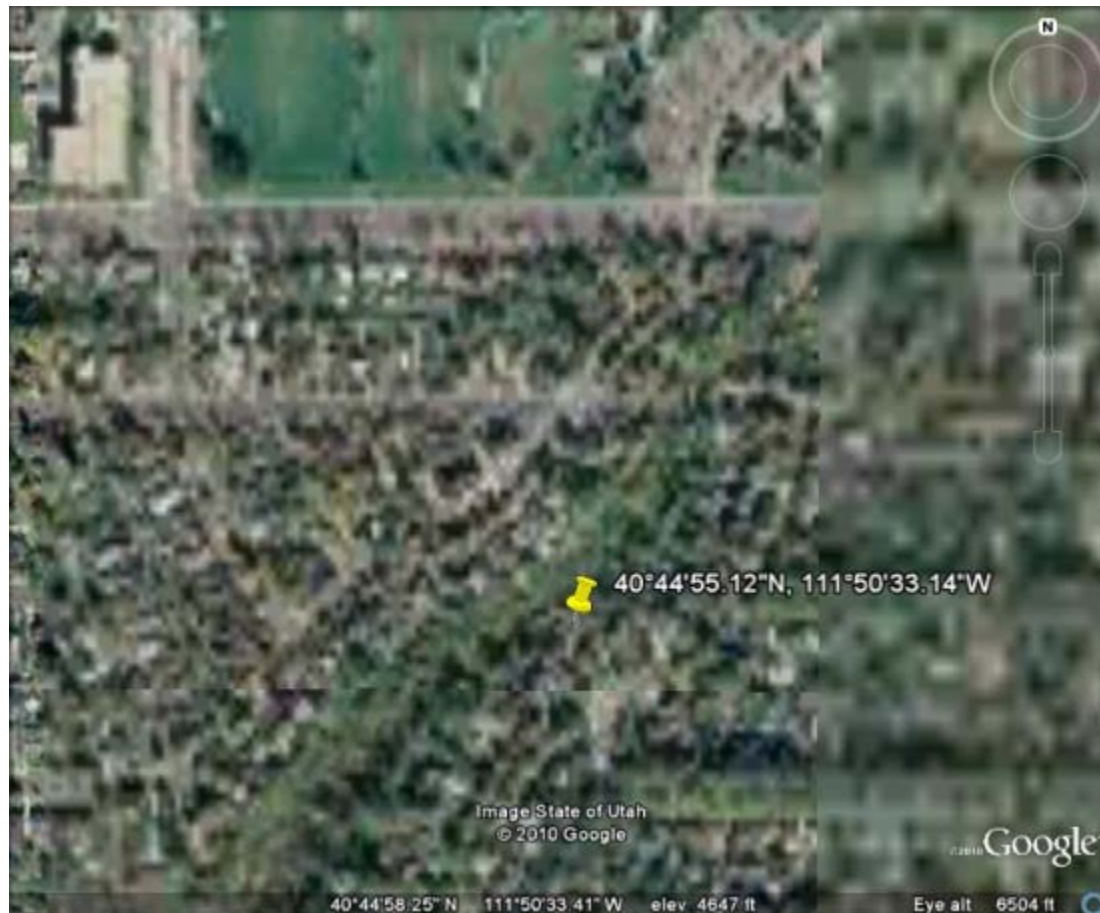
Red Butte Creek Oil Release Air Monitoring Journal

Miller Park Sample Sites



Red Butte Creek Oil Release Air Monitoring Journal

Resident Sample Site at 966 Military



Red Butte Creek Oil Release Air Monitoring Journal

Garden Ward Sample Site at 11th East and Harvard



40°44'42.01"N, 111°51'29.60"W

Image State of Utah

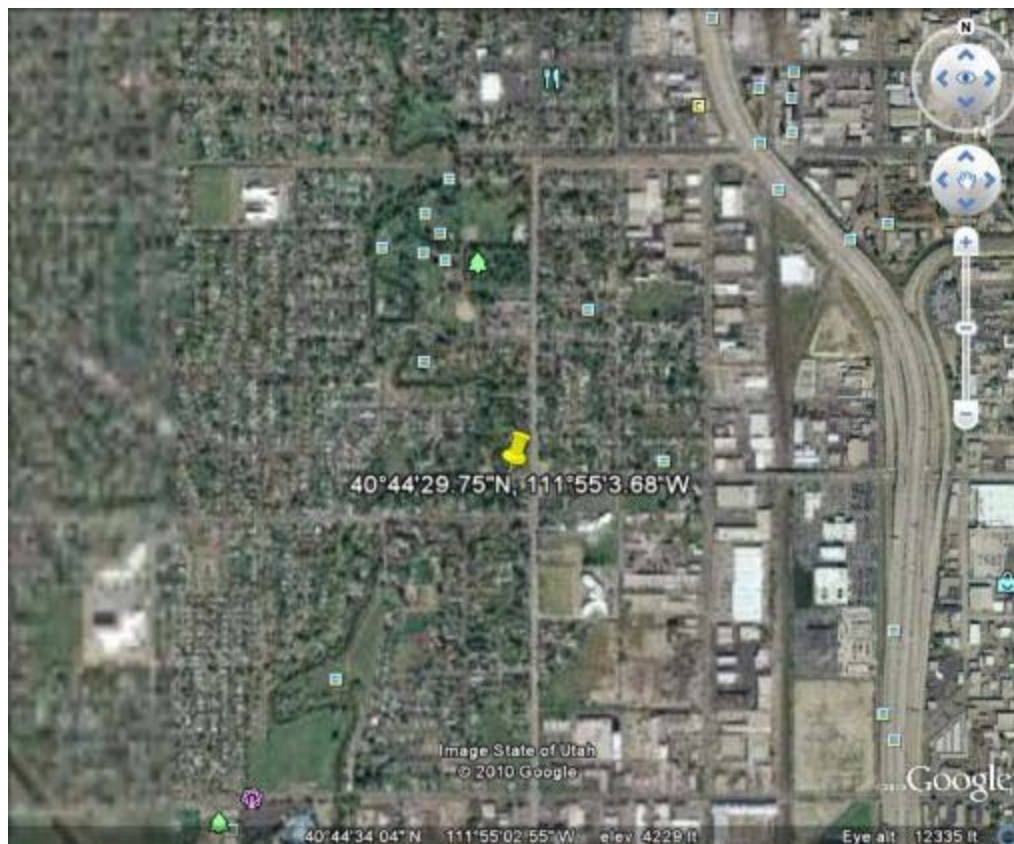
Google

40°44'42.20" N 111°51'30.46" W elev: 4386 ft

Eye alt: 5171 ft

Red Butte Creek Oil Release Air Monitoring Journal

Sample Site at the Jordan River Confluence



Red Butte Creek Oil Release Air Monitoring Journal

Sample Site at Sunnyside Park

