

Chapter 7 ROOF FORMS & PARAPETS

The roof forms of specific styles of historic apartment building, such as the steeper roof pitch associated with for example Tudor, Gothic or perhaps Spanish influences, will be characteristics which are important to the historic integrity of the building, and which will be readily appreciated from the street. Similarly, the location, form and detail of dormer windows should respect the original building design.

Many apartments however have either a flat or low pitched roofline set behind a parapet wall. Here the roofing materials will not be apparent and not an obvious feature of the historic integrity of the building.

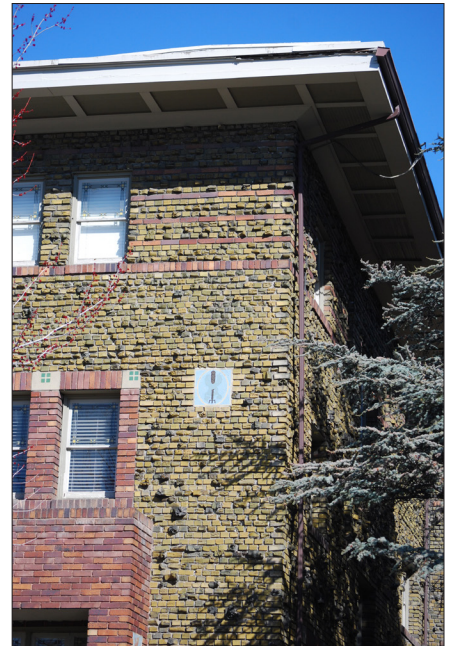
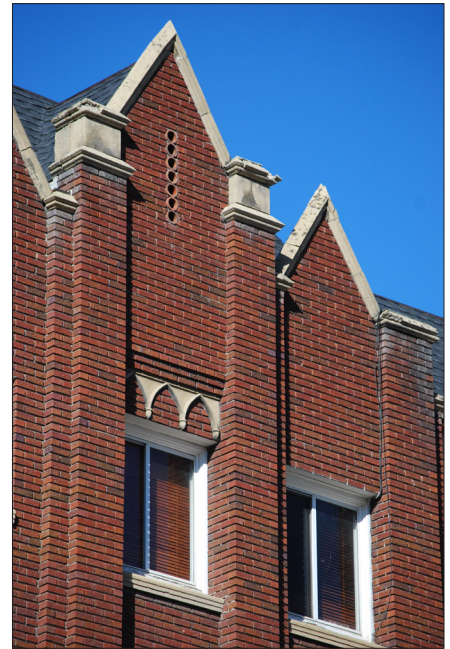
At the same time, the parapet itself is often designed as a decorative, as well as a functional feature, to terminate and frame the design of the primary facade.

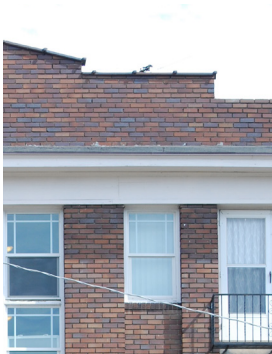
7.1 Repairs to a roof profile and to a parapet should match the original to the greatest extent possible.

7.2 Improvements should be undertaken in the spirit of the original design, retaining or indeed reinstating elements of the original.

A parapet-screened lower roof profile provides an opportunity and situation for the addition of solar power generating hardware, with zero or minimal effect upon the profile of the building. (See Sustainability Design Guidelines, PART IV)

See also: [A Residential Handbook for Historic Residential Properties & Districts in Salt Lake City, Ch.7 Roofs](#)





ROOF FORMS & PARAPETS