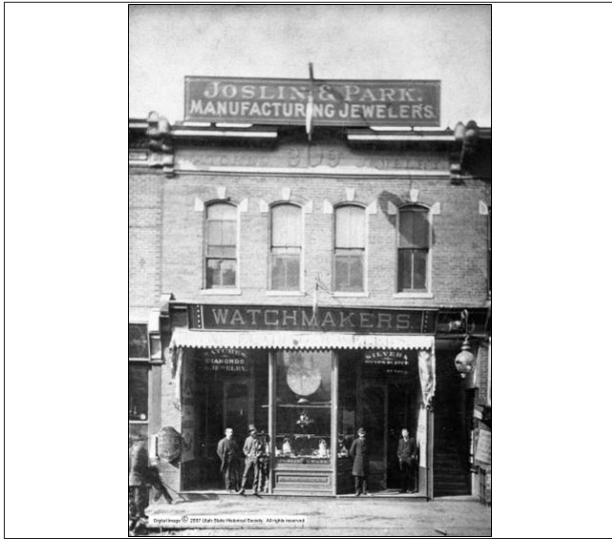


Guidelines for Signs



This jewelry company at 170 S Main Street advertised through a large wall sign mounted at the roofline, a projecting sign, sign above the storefront and window signs. This photograph is from ca. 1880. (Photo courtesy of the Utah Historical Society).

Certificate of Appropriateness applications are available on line at:

<http://www.slcgov.com/CED/planning/pages/applications.htm>



Creativity in sign design can be fun and attractive.

Applicability

These design guidelines apply to the exterior signs within the H-Historic Preservation Overlay District in Salt Lake City (interior signs are not regulated through the historic overlay), including new signs and the rehabilitation of existing signs. The Historic Landmark Commission has the authority to further regulate signs to ensure that new and altered signs are appropriate for the historic setting. Chapter 46 of the Salt Lake City Zoning Ordinance governs signs in the City, including in historic overlay zones. Signs should be designed and installed in accordance with the City's Zoning Ordinance combined with the guidance provided in this document. Whenever there is a conflict between the regulations of the base zoning district and the H-Historic Preservation Overlay district standards, the regulations in the Overlay Zoning District take precedent.

All signs in a historic preservation overlay must meet the provisions of the Salt Lake City Zoning Ordinance as well as receive a Certificate of Appropriateness. Certificate of Appropriateness review will determine whether a sign proposal meets the context of these guidelines and the H-Historic Preservation Overlay Zone requirements while a building permit review will determine whether the sign complies with the Zoning Ordinance and International Building Code. The guidelines establish a range of considerations to ensure compliance with the standards listed in Section 21A.34.020 of the Zoning Ordinance H-Historic Preservation Overlay Zone.