

JUL 16, 2018

Economic Overview Report

SALT LAKE CITY, UT



DEMOGRAPHIC PROFILE	3
EMPLOYMENT TRENDS	5
WAGE TRENDS.....	5
COST OF LIVING INDEX	6
INDUSTRY SNAPSHOT.....	7
OCCUPATION SNAPSHOT	9
INDUSTRY CLUSTERS	11
EDUCATION LEVELS	12
FAQ.....	13

Demographic Profile

The population in the City of Salt Lake City, UT was 191,446 per American Community Survey data for 2012-2016.

The region has a civilian labor force of 109,175 with a participation rate of 70.8%. Of individuals 25 to 64 in the City of Salt Lake City, UT, 45.0% have a bachelor's degree or higher which compares with 31.8% in the nation.

The median household income in the City of Salt Lake City, UT is \$50,353 and the median house value is \$248,700.

Summary¹

	Percent			Value		
	City of Salt Lake City, UT	Utah	USA	City of Salt Lake City, UT	Utah	USA
Demographics						
Population (ACS)	—	—	—	191,446	2,948,427	318,558,162
Male	51.9%	50.3%	49.2%	99,431	1,483,055	156,765,322
Female	48.1%	49.7%	50.8%	92,015	1,465,372	161,792,840
Median Age ²	—	—	—	31.8	30.3	37.7
Under 18 Years	21.2%	30.7%	23.1%	40,552	905,196	73,612,438
18 to 24 Years	13.2%	11.4%	9.8%	25,244	336,128	31,296,577
25 to 34 Years	21.6%	15.0%	13.6%	41,305	441,468	43,397,907
35 to 44 Years	13.3%	13.1%	12.7%	25,418	385,777	40,548,400
45 to 54 Years	10.5%	10.4%	13.6%	20,073	307,996	43,460,466
55 to 64 Years	9.9%	9.4%	12.6%	19,039	276,520	40,061,742
65 to 74 Years	5.9%	5.8%	8.3%	11,334	172,376	26,355,308
75 Years, and Over	4.4%	4.2%	6.2%	8,481	122,966	19,825,324
Race: White	72.8%	87.3%	73.3%	139,436	2,572,595	233,657,078
Race: Black or African American	2.5%	1.1%	12.6%	4,702	32,512	40,241,818
Race: American Indian and Alaska Native	1.1%	1.1%	0.8%	2,086	31,686	2,597,817
Race: Asian	5.6%	2.2%	5.2%	10,728	66,039	16,614,625
Race: Native Hawaiian and Other Pacific Islander	2.2%	0.9%	0.2%	4,143	26,411	560,021
Race: Some Other Race	13.1%	4.8%	4.8%	25,024	141,374	15,133,856
Race: Two or More Races	2.8%	2.6%	3.1%	5,327	77,810	9,752,947
Hispanic or Latino (of any race)	21.6%	13.5%	17.3%	41,258	397,915	55,199,107
Economic						
Labor Force Participation Rate and Size (civilian population 16 years and over)	70.8%	67.9%	63.3%	109,175	1,447,260	159,807,099
Armed Forces Labor Force	0.1%	0.2%	0.4%	78	4,079	1,011,641
Veterans, Age 18-64	3.3%	3.9%	5.1%	4,328	67,141	10,165,671
Median Household Income ²	—	—	—	\$50,353	\$62,518	\$55,322
Per Capita Income	—	—	—	\$31,188	\$25,600	\$29,829
Poverty Level (of all people)	19.1%	11.7%	15.1%	35,812	338,808	46,932,225
Households Receiving Food Stamps	10.1%	8.3%	13.0%	7,621	76,578	15,360,951
Mean Commute Time (minutes)	—	—	—	19.7	21.6	26.1
Commute via Public Transportation	7.2%	2.6%	5.1%	7,297	34,729	7,476,312
Educational Attainment, Age 25-64						
No High School Diploma	12.6%	8.3%	11.6%	13,353	117,826	19,478,050
High School Graduate	16.0%	22.4%	26.1%	16,963	315,559	43,788,541
Some College, No Degree	19.1%	26.9%	21.5%	20,244	380,064	36,025,193
Associate's Degree	7.3%	10.5%	8.9%	7,700	147,735	14,962,488

Summary¹

	Percent			Value		
	City of Salt Lake City, UT	Utah	USA	City of Salt Lake City, UT	Utah	USA
Bachelor's Degree	25.8%	21.7%	20.2%	27,312	306,281	33,845,524
Postgraduate Degree	19.1%	10.2%	11.6%	20,263	144,296	19,368,719
Housing						
Total Housing Units	—	—	—	81,698	1,024,047	134,054,899
Median House Value (of owner-occupied units) ²	—	—	—	\$248,700	\$224,600	\$184,700
Homeowner Vacancy	2.5%	1.5%	1.8%	928	9,571	1,395,797
Rental Vacancy	3.8%	5.6%	6.2%	1,575	16,814	2,855,844
Renter-Occupied Housing Units (% of Occupied Units)	51.8%	30.4%	36.4%	39,069	279,600	42,835,169
Occupied Housing Units with No Vehicle Available (% of Occupied Units)	11.5%	4.3%	9.0%	8,650	39,788	10,562,847
Social						
Enrolled in Grade 12 (% of total population)	1.1%	1.7%	1.4%	2,129	49,565	4,433,703
Disconnected Youth ⁴	1.6%	2.4%	2.8%	138	4,336	485,589
Children in Single Parent Families (% of all children)	31.4%	19.2%	34.7%	12,159	167,881	24,318,038
With a Disability, Age 18-64	8.8%	8.5%	10.3%	11,497	147,589	20,188,257
With a Disability, Age 18-64, Labor Force Participation Rate and Size	52.1%	50.2%	41.0%	5,990	74,092	8,278,834
Foreign Born	17.5%	8.3%	13.2%	33,576	244,784	42,194,354
Speak English Less Than Very Well (population 5 yrs and over)	10.3%	5.0%	8.5%	18,375	133,930	25,440,956
Union Membership						
Total ³	4.6%	4.1%	10.7%	—	—	—
Private Sector ³	2.0%	2.2%	6.4%	—	—	—
Manufacturing ³	2.2%	2.0%	8.7%	—	—	—
Public Sector ³	14.4%	14.2%	35.1%	—	—	—

Source: [JobsEQ®](#)

1. American Community Survey 2012-2016, unless noted otherwise

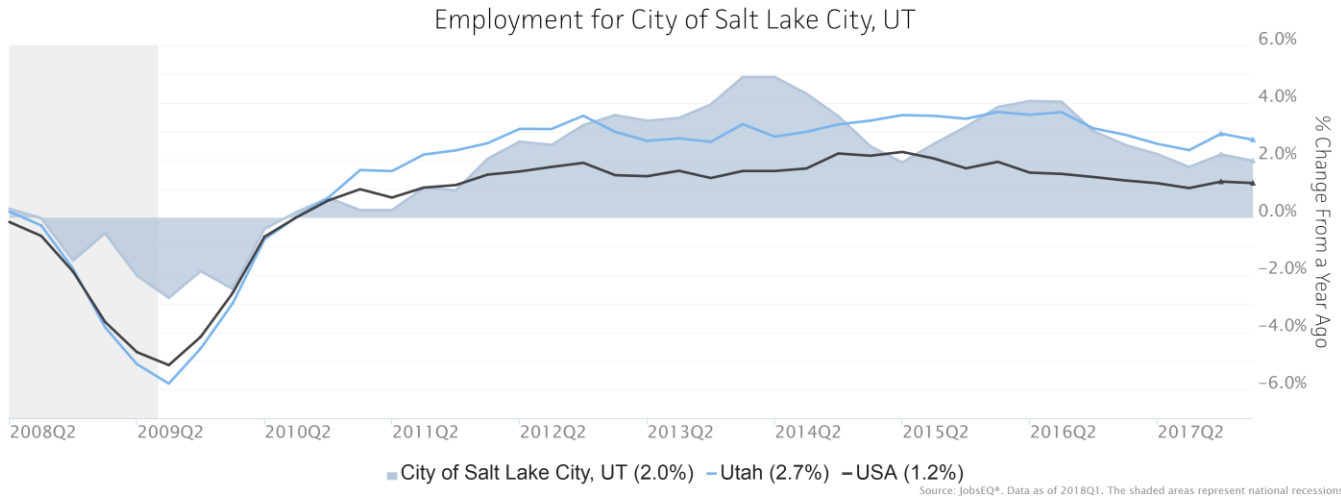
2. Median values for certain aggregate regions (such as MSAs) may be estimated as the weighted averages of the median values from the composing counties.

3. 2017; Current Population Survey, unionstats.com, and Chmura; county- and zip-level data are best estimates based upon industry-, MSA-, and state-level data

4. Disconnected Youth are 16-19 year olds who are (1) not in school, (2) not high school graduates, and (3) either unemployed or not in the labor force.

Employment Trends

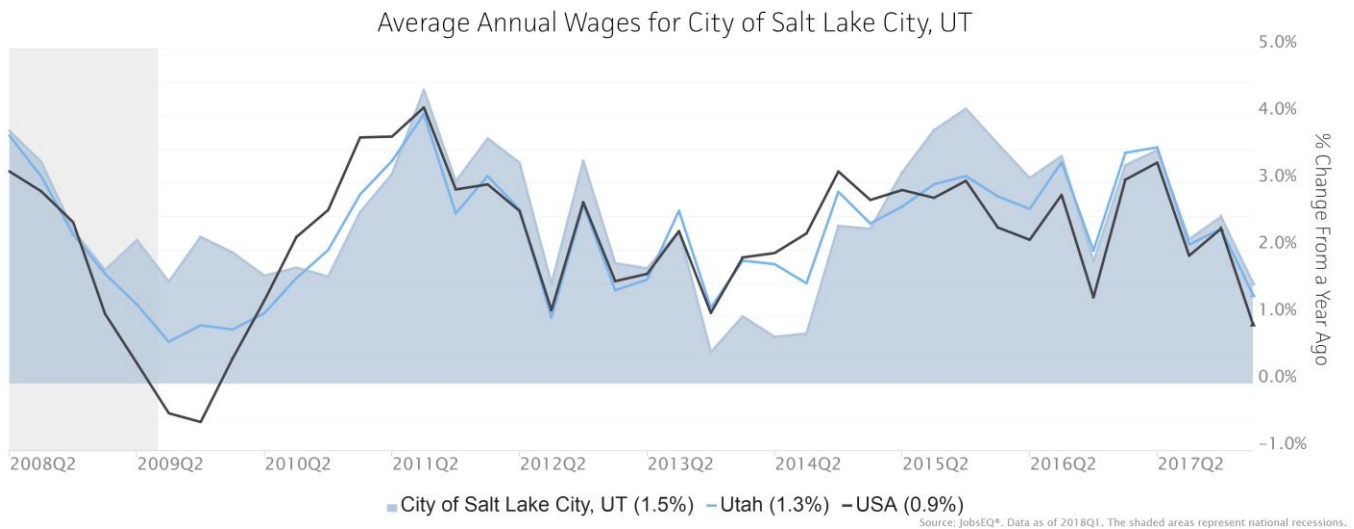
As of 2018Q1, total employment for the City of Salt Lake City, UT was 284,331 (based on a four-quarter moving average). Over the year ending 2018Q1, employment increased 2.0% in the region.



Employment data are derived from the Quarterly Census of Employment and Wages, provided by the Bureau of Labor Statistics and imputed where necessary. Data are updated through 2017Q3 with preliminary estimates updated to 2018Q1.

Wage Trends

The average worker in the City of Salt Lake City, UT earned annual wages of \$52,577 as of 2018Q1. Average annual wages per worker increased 1.5% in the region during the preceding four quarters. For comparison purposes, annual average wages were \$53,893 in the nation as of 2018Q1.



Annual average wages per worker data are derived from the Quarterly Census of Employment and Wages, provided by the Bureau of Labor Statistics and imputed where necessary. Data are updated through 2017Q3 with preliminary estimates updated to 2018Q1.

Cost of Living Index

The Cost of Living Index estimates the relative price levels for consumer goods and services. When applied to wages and salaries, the result is a measure of relative purchasing power. The cost of living is 0.9% lower in City of Salt Lake City, UT than the U.S. average.

Cost of Living Information

	Annual Average Salary	Cost of Living Index	
		(Base US)	US Purchasing Power
City of Salt Lake City, UT	\$52,577	99.1	\$53,057
Utah	\$46,068	99.2	\$46,440
USA	\$53,893	100.0	\$53,893

Source: [JobsEQ®](#)

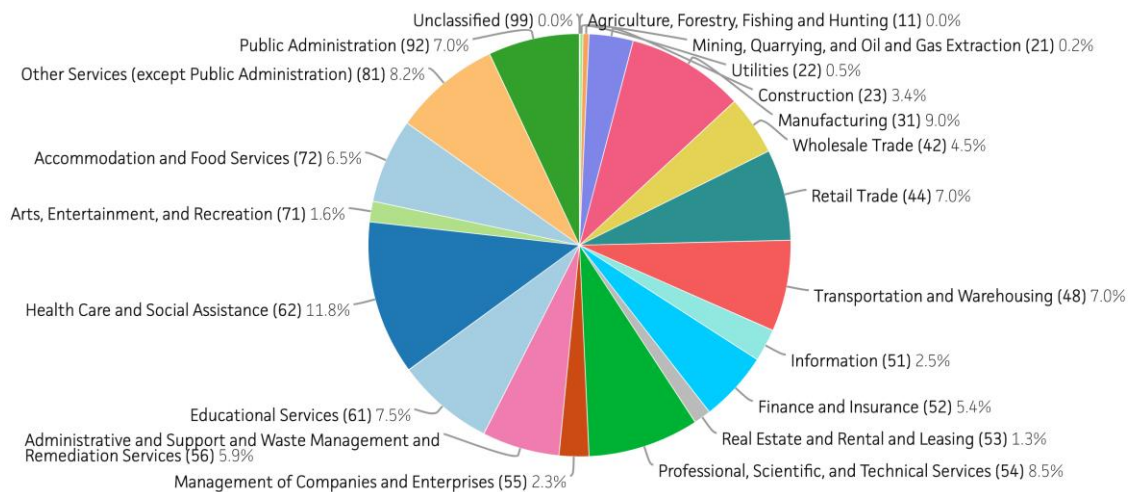
Data as of 2018Q1

Cost of Living per C2ER, data as of 2018q1, imputed by Chmura where necessary.

Industry Snapshot

The largest sector in the City of Salt Lake City, UT is Health Care and Social Assistance, employing 33,542 workers. The next-largest sectors in the region are Manufacturing (25,596 workers) and Professional, Scientific, and Technical Services (24,172). High location quotients (LQs) indicate sectors in which a region has high concentrations of employment compared to the national average. The sectors with the largest LQs in the region are Other Services (except Public Administration) (LQ = 1.86), Transportation and Warehousing (1.65), and Management of Companies and Enterprises (1.54).

Total Workers for City of Salt Lake City, UT by Industry



Source: JobsEQ®, Data as of 2018Q1

Employment data are derived from the Quarterly Census of Employment and Wages, provided by the Bureau of Labor Statistics and imputed where necessary. Data are updated through 2017Q3 with preliminary estimates updated to 2018Q1.

Sectors in the City of Salt Lake City, UT with the highest average wages per worker are Management of Companies and Enterprises (\$98,664), Utilities (\$92,717), and Mining, Quarrying, and Oil and Gas Extraction (\$88,034). Regional sectors with the best job growth (or most moderate job losses) over the last 5 years are Other Services (except Public Administration) (+9,037 jobs), Health Care and Social Assistance (+5,896), and Professional, Scientific, and Technical Services (+4,089).

Over the next 1 year, employment in the City of Salt Lake City, UT is projected to expand by 3,630 jobs. The fastest growing sector in the region is expected to be Health Care and Social Assistance with a +2.2% year-over-year rate of growth. The strongest forecast by number of jobs over this period is expected for Health Care and Social Assistance (+729 jobs), Professional, Scientific, and Technical Services (+414), and Administrative and Support and Waste Management and Remediation Services (+279).

NAICS	Industry	Current			5-Year History		1-Year Forecast				
		Four Quarters Ending with 2018q1			Total Change	Avg Ann % Chg in Empl	Separations (Approximate)			---Growth---	
		Empl	Avg Ann Wages	LQ	Empl	Region	Total New Demand	Exits	Transfers	Empl	Avg Ann Rate
11	Agriculture, Forestry, Fishing and Hunting	114	\$24,179	0.03	15	2.8%	14	5	7	1	1.1%
21	Mining, Quarrying, and Oil and Gas Extraction	648	\$88,034	0.54	-323	-7.8%	78	22	44	12	1.8%
22	Utilities	1,319	\$92,717	0.88	-13	-0.2%	138	43	76	18	1.4%
23	Construction	9,603	\$52,575	0.61	901	2.0%	1,101	341	608	153	1.6%
31	Manufacturing	25,596	\$62,035	1.09	1,209	1.0%	2,696	989	1,685	22	0.1%
42	Wholesale Trade	12,920	\$70,305	1.16	1,030	1.7%	1,485	515	848	122	0.9%
44	Retail Trade	19,853	\$36,198	0.65	2,488	2.7%	2,866	1,175	1,484	207	1.0%
48	Transportation and Warehousing	19,831	\$53,010	1.65	3,652	4.2%	2,332	901	1,208	224	1.1%
51	Information	7,101	\$70,324	1.26	1,346	4.3%	793	253	441	99	1.4%
52	Finance and Insurance	15,213	\$73,154	1.34	1,386	1.9%	1,680	553	891	235	1.5%
53	Real Estate and Rental and Leasing	3,790	\$56,106	0.78	364	2.0%	430	177	210	43	1.1%
54	Professional, Scientific, and Technical Services	24,172	\$75,362	1.29	4,089	3.8%	2,500	783	1,303	414	1.7%
55	Management of Companies and Enterprises	6,457	\$98,664	1.54	91	0.3%	663	219	369	76	1.2%
56	Administrative and Support and Waste Management and Remediation Services	16,816	\$38,767	0.92	2,440	3.2%	2,228	828	1,121	279	1.7%
61	Educational Services	21,325	\$52,867	0.91	3,951	4.2%	2,231	954	1,026	250	1.2%
62	Health Care and Social Assistance	33,542	\$53,763	0.82	5,896	3.9%	3,905	1,560	1,615	729	2.2%
71	Arts, Entertainment, and Recreation	4,466	\$33,312	0.79	711	3.5%	700	283	346	71	1.6%
72	Accommodation and Food Services	18,386	\$19,951	0.72	2,568	3.1%	3,210	1,322	1,664	224	1.2%
81	Other Services (except Public Administration)	23,283	\$39,498	1.86	9,037	10.3%	2,908	1,212	1,442	254	1.1%
92	Public Administration	19,890	\$50,272	1.48	783	0.8%	1,996	779	1,055	162	0.8%
99	Unclassified	6	\$71,100	0.01	-1	-3.9%	1	0	0	0	1.3%
	Total - All Industries	284,331	\$52,577	1.00	41,620	3.2%	34,810	13,366	17,814	3,630	1.3%

Source: [JobsEQ®](#)

Employment data are derived from the Quarterly Census of Employment and Wages, provided by the Bureau of Labor Statistics and imputed where necessary. Data are updated through 2017Q3 with preliminary estimates updated to 2018Q1. Forecast employment growth uses national projections adapted for regional growth patterns.

Occupation Snapshot

The largest major occupation group in the City of Salt Lake City, UT is Office and Administrative Support Occupations, employing 52,591 workers. The next-largest occupation groups in the region are Sales and Related Occupations (23,988 workers) and Transportation and Material Moving Occupations (19,434). High location quotients (LQs) indicate occupation groups in which a region has high concentrations of employment compared to the national average. The major groups with the largest LQs in the region are Community and Social Service Occupations (LQ = 1.65), Legal Occupations (1.59), and Arts, Design, Entertainment, Sports, and Media Occupations (1.45).

Occupation groups in the City of Salt Lake City, UT with the highest average wages per worker are Management Occupations (\$99,800), Legal Occupations (\$86,600), and Computer and Mathematical Occupations (\$82,700). The unemployment rate in the region varied among the major groups from 0.9% among Healthcare Practitioners and Technical Occupations to 7.7% among Farming, Fishing, and Forestry Occupations.

Over the next 1 year, the fastest growing occupation group in the City of Salt Lake City, UT is expected to be Healthcare Support Occupations with a +2.3% year-over-year rate of growth. The strongest forecast by number of jobs over this period is expected for Office and Administrative Support Occupations (+366 jobs) and Healthcare Practitioners and Technical Occupations (+324). Over the same period, the highest separation demand (occupation demand due to retirements and workers moving from one occupation to another) is expected in Office and Administrative Support Occupations (5,983 jobs) and Sales and Related Occupations (3,184).

Occupation Snapshot in City of Salt Lake City, UT, 2018q1

SOC	Occupation	Current					5-Year History			1-Year Forecast			
		Four Quarters Ending with 2018q1			----2018q1----		Total Change	Avg Ann % Chg in Empl	Total New Demand	--Separations--		---Growth---	
		Empl	Avg Ann Wages ¹	LQ	Unempl	Unempl Rate				Empl	Region	Exits	Transfer
11-0000	Management	18,930	\$99,800	1.11	110	1.2%	2,537	2.9%	1,834	482	1,066	286	1.5%
13-0000	Business and Financial Operations	17,845	\$68,000	1.22	153	1.8%	2,398	2.9%	1,947	550	1,108	288	1.6%
15-0000	Computer and Mathematical	11,886	\$82,700	1.43	102	1.9%	2,403	4.6%	1,064	214	612	238	2.0%
17-0000	Architecture and Engineering	6,177	\$78,200	1.28	37	1.5%	268	0.9%	539	161	297	81	1.3%
19-0000	Life, Physical, and Social Science	3,230	\$66,300	1.39	20	1.4%	506	3.5%	352	91	216	45	1.4%
21-0000	Community and Social Service	7,540	\$46,700	1.65	32	1.1%	2,424	8.1%	1,008	344	536	128	1.7%
23-0000	Legal	3,678	\$86,600	1.59	18	1.2%	5	0.0%	297	95	144	59	1.6%
25-0000	Education, Training, and Library	12,935	\$61,700	0.81	111	1.4%	2,920	5.3%	1,339	588	559	193	1.5%
27-0000	Arts, Design, Entertainment, Sports, and Media	7,411	\$51,500	1.45	72	2.3%	1,666	5.2%	826	323	408	95	1.3%
29-0000	Healthcare Practitioners and Technical	16,176	\$76,200	1.00	82	0.9%	2,779	3.8%	1,228	460	444	324	2.0%
31-0000	Healthcare Support	5,421	\$30,400	0.68	72	2.2%	964	4.0%	774	326	324	124	2.3%
33-0000	Protective Service	6,285	\$44,300	1.03	59	2.6%	626	2.1%	755	343	348	64	1.0%
35-0000	Food Preparation and Serving Related	16,803	\$24,300	0.69	514	5.4%	2,427	3.2%	3,230	1,336	1,663	231	1.4%
37-0000	Building and Grounds Cleaning and Maintenance	8,896	\$25,700	0.89	210	4.7%	1,514	3.8%	1,300	588	587	125	1.4%
39-0000	Personal Care and Service	7,944	\$26,100	0.71	125	3.0%	1,523	4.3%	1,436	653	638	146	1.8%
41-0000	Sales and Related	23,988	\$45,100	0.82	429	3.4%	2,136	1.9%	3,445	1,291	1,893	261	1.1%

Occupation Snapshot in City of Salt Lake City, UT, 2018q1

SOC	Occupation	Current					5-Year History		1-Year Forecast				
		Four Quarters Ending with 2018q1			-----2018q1-----		Total Change	Avg Ann % Chg in Empl	Total New Demand	--Separations--		---Growth---	
		Empl	Avg Ann Wages ¹	LQ	Unempl	Unempl Rate				Empl	Region	Exits	Transfer
43-0000	Office and Administrative Support	52,591	\$36,600	1.25	790	3.2%	7,559	3.2%	6,348	2,721	3,262	366	0.7%
45-0000	Farming, Fishing, and Forestry	262	\$31,900	0.14	12	7.7%	35	2.9%	41	10	28	2	0.8%
47-0000	Construction and Extraction	9,039	\$45,000	0.70	295	5.9%	774	1.8%	1,106	333	632	141	1.6%
49-0000	Installation, Maintenance, and Repair	10,564	\$48,700	0.97	100	2.2%	1,350	2.8%	1,154	385	644	125	1.2%
51-0000	Production	17,298	\$37,100	1.00	221	3.3%	1,599	2.0%	1,991	730	1,232	29	0.2%
53-0000	Transportation and Material Moving	19,434	\$39,900	1.01	348	4.3%	3,208	3.7%	2,635	948	1,439	247	1.3%
	Total - All Occupations	284,331	\$51,000	1.00	n/a	n/a	41,620	3.2%	34,680	12,971	18,080	3,629	1.3%

Source: [JobsEQ®](#)

Data as of 2018Q1 unless noted otherwise

Note: Figures may not sum due to rounding.

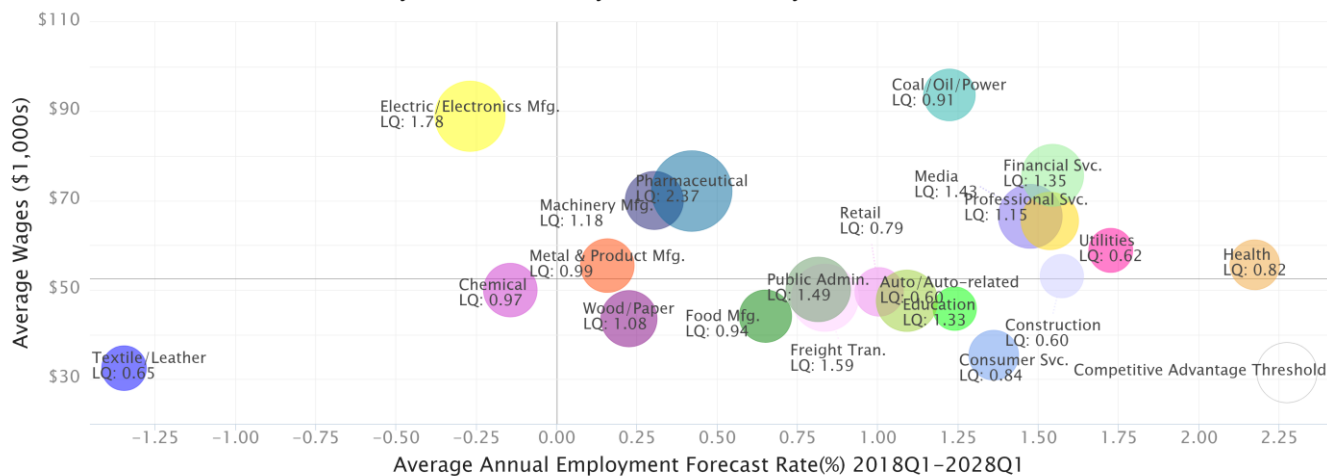
1. Occupation wages are as of 2017 and should be taken as the average for all Covered Employment

Occupation employment data are estimated via industry employment data and the estimated industry/occupation mix. Industry employment data are derived from the Quarterly Census of Employment and Wages, provided by the Bureau of Labor Statistics and currently updated through 2017Q3, imputed where necessary with preliminary estimates updated to 2018Q1. Wages by occupation are as of 2017 provided by the BLS and imputed where necessary. Forecast employment growth uses national projections from the Bureau of Labor Statistics adapted for regional growth patterns.

Industry Clusters

A cluster is a geographic concentration of interrelated industries or occupations. The industry cluster in the City of Salt Lake City, UT with the highest relative concentration is Pharmaceutical with a location quotient of 2.37. This cluster employs 1,280 workers in the region with an average wage of \$72,150. Employment in the Pharmaceutical cluster is projected to expand in the region about 0.4% per year over the next ten years.

Industry Clusters for City of Salt Lake City, UT as of 2018Q1



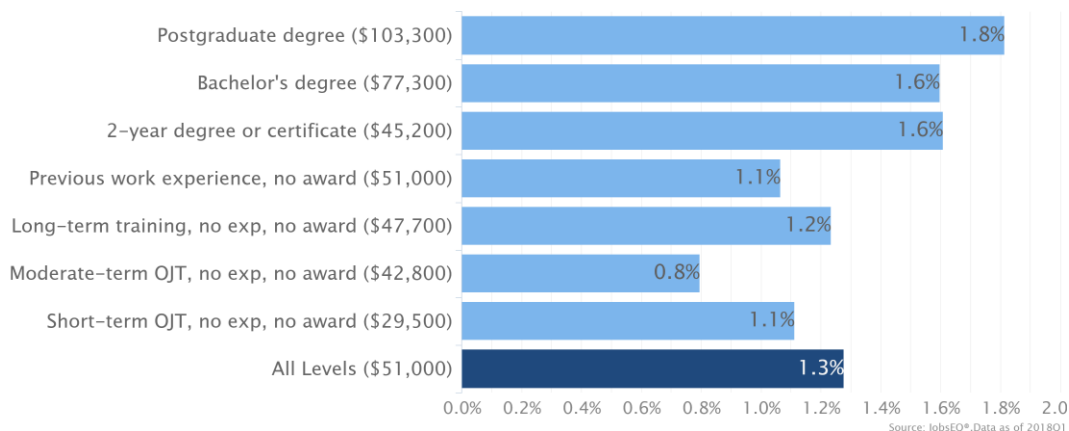
Source: JobsEQ®, Data as of 2018Q1

Location quotient and average wage data are derived from the Quarterly Census of Employment and Wages, provided by the Bureau of Labor Statistics, imputed where necessary, and updated through 2017Q3 with preliminary estimates updated to 2018Q1. Forecast employment growth uses national projections from the Bureau of Labor Statistics adapted for regional growth patterns.

Education Levels

Expected growth rates for occupations vary by the education and training required. While all employment in the City of Salt Lake City, UT is projected to grow 1.3% over the next ten years, occupations typically requiring a postgraduate degree are expected to grow 1.8% per year, those requiring a bachelor's degree are forecast to grow 1.6% per year, and occupations typically needing a 2-year degree or certificate are expected to grow 1.6% per year.

Annual Average Projected Job Growth by Training Required for City of Salt Lake City, UT



Employment by occupation data are estimates as of 2018Q1. Education levels of occupations are based on BLS assignments. Forecast employment growth uses national projections from the Bureau of Labor Statistics adapted for regional growth patterns.

FAQ

What is a location quotient?

A location quotient (LQ) is a measurement of concentration in comparison to the nation. An LQ of 1.00 indicates a region has the same concentration of an industry (or occupation) as the nation. An LQ of 2.00 would mean the region has twice the expected employment compared to the nation and an LQ of 0.50 would mean the region has half the expected employment in comparison to the nation.

What is separation demand?

Separation demand is the number of jobs required due to separations—labor force exits (including retirements) and turnover resulting from workers moving from one occupation into another. Note that separation demand does not include all turnover—it does not include when workers stay in the same occupation but switch employers. The total projected demand for an occupation is the sum of the separation demand and the growth demand (which is the increase or decrease of jobs in an occupation expected due to expansion or contraction of the overall number of jobs in that occupation).

What is a cluster?

A cluster is a geographic concentration of interrelated industries or occupations. If a regional cluster has a location quotient of 1.25 or greater, the region is considered to possess a *competitive advantage* in that cluster.

What is the difference between industry wages and occupation wages?

Industry wages and occupation wages are estimated via separate data sets, often the time periods being reported do not align, and wages are defined slightly differently in the two systems (for example, certain bonuses are included in the industry wages but not the occupation wages). It is therefore common that estimates of the average industry wages and average occupation wages in a region do not match exactly.

What is NAICS?

The North American Industry Classification System (NAICS) is used to classify business establishments according to the type of economic activity. The NAICS Code comprises six levels, from the “all industry” level to the 6-digit level. The first two digits define the top level category, known as the “sector,” which is the level examined in this report.

What is SOC?

The Standard Occupational Classification system (SOC) is used to classify workers into occupational categories. All workers are classified into one of over 820 occupations according to their occupational definition. To facilitate classification, occupations are combined to form 23 major groups, 96 minor groups, and 449 occupation groups. Each occupation group includes detailed occupations requiring similar job duties, skills, education, or experience.

About This Report

This report and all data herein were produced by JobsEQ®, a product of Chmura Economics & Analytics. The information contained herein was obtained from sources we believe to be reliable. However, we cannot guarantee its accuracy and completeness.