

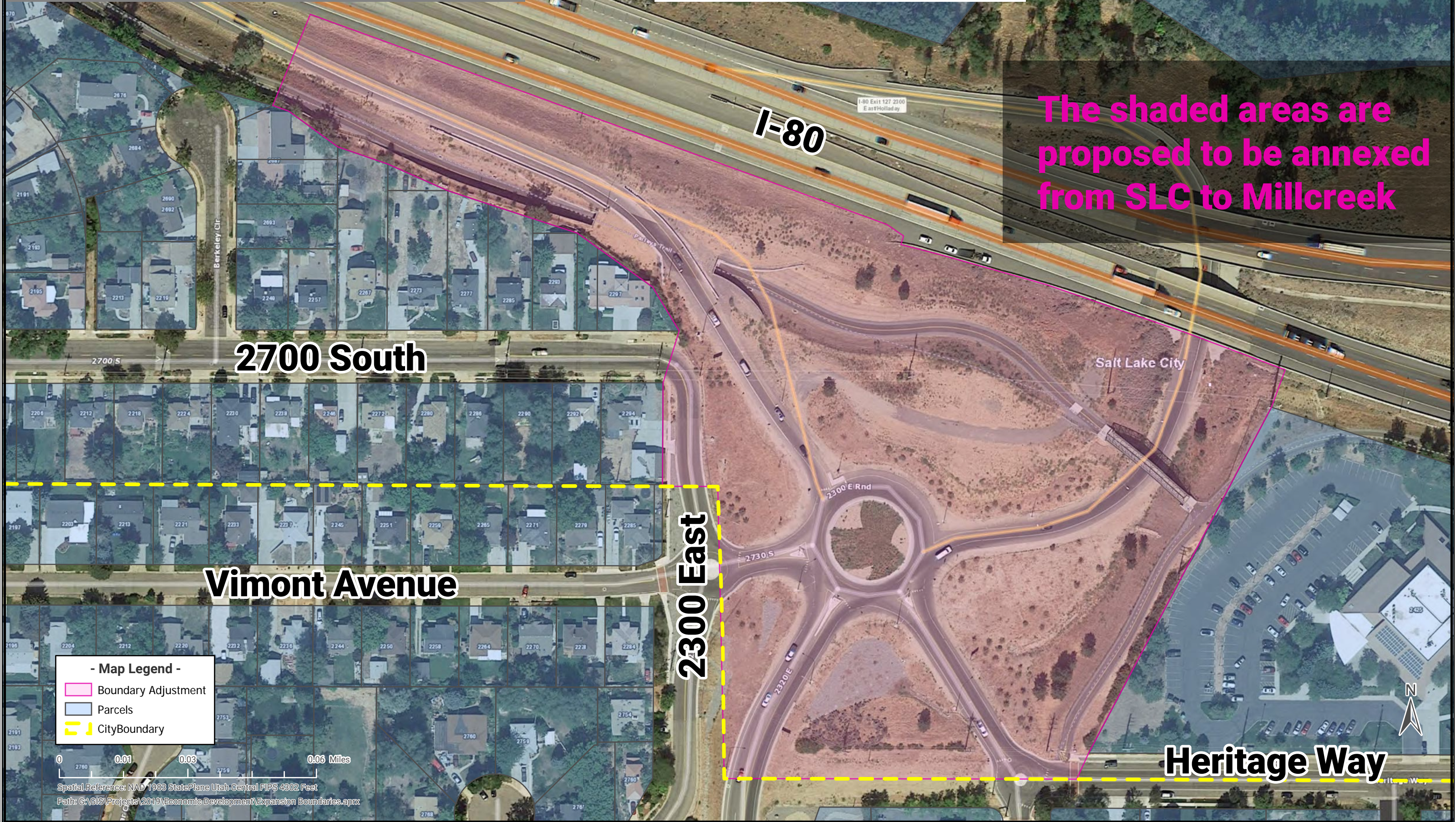
# 2300 E LOOP/HERITAGE WAY BOUNDARY ADJUSTMENT



Published:  
28 August 2019

Sources:  
Utah State AGRC  
Salt Lake County  
Millcreek

Millcreek makes no warranty with respect to the accuracy, completeness or usefulness of this publication, or the consequential damages resulting from the use or misuse of this publication, or any of the information contained herein.



The shaded areas are proposed to be annexed from SLC to Millcreek

- Map Legend -
- Boundary Adjustment
- Parcels
- City Boundary

0 0.01 0.03 0.06 Miles

Spatial Reference: NAD 1983 StatePlane Utah Central FIPS 4302 Feet  
Path: C:\GIS\Projects\2019\Economic Development\Expansion Boundaries.aprx

