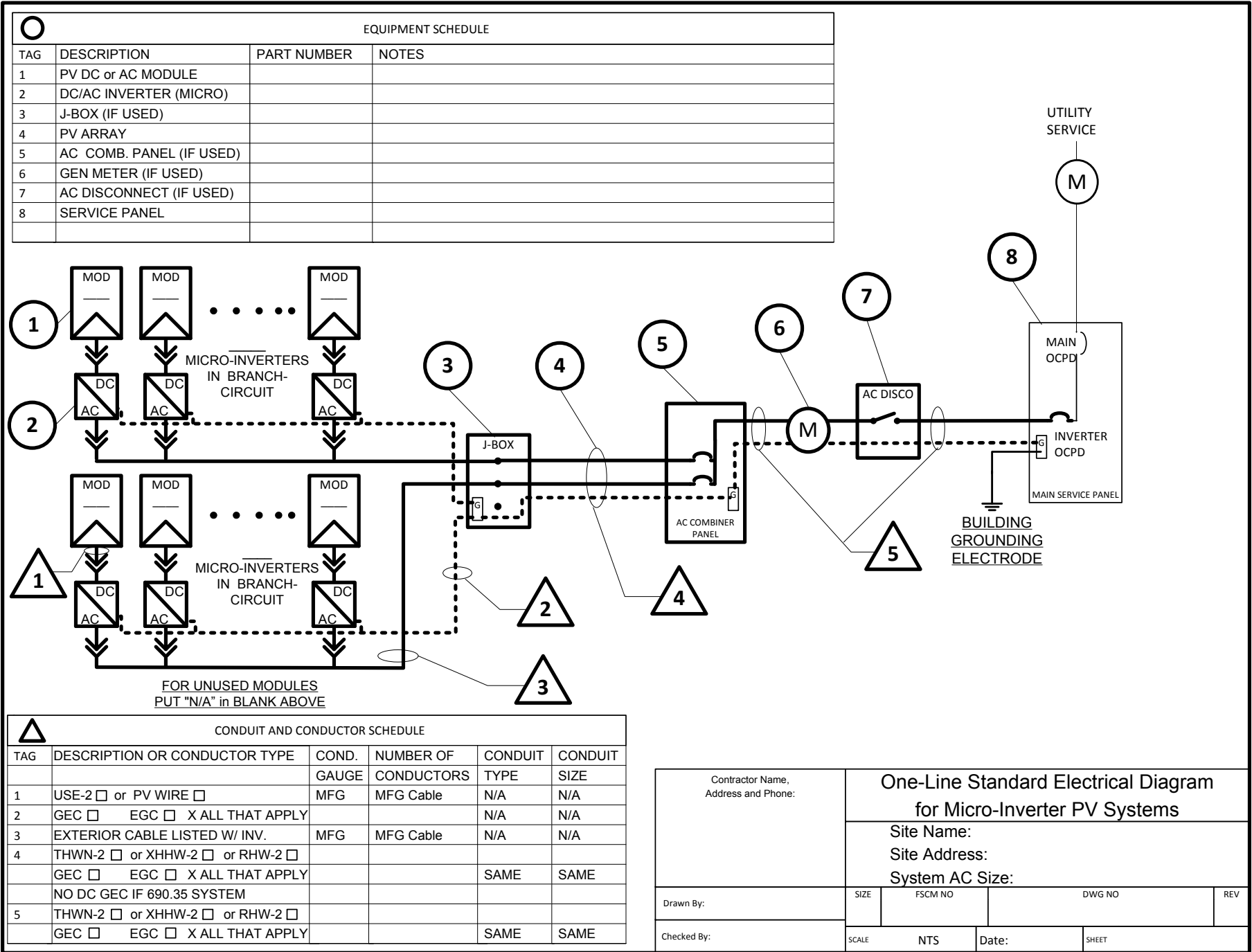


MICRO-INVERTER SITE PLAN

Contractor Name, Address and Phone:	Site Plan for Small-Scale, Single-Phase PV Systems			
	Site Name: Site Address: System AC Size:			
Drawn By:	SIZE	FSCM NO	DWG NO	REV
Checked By:	SCALE	NTS	Date:	SHEET

MICRO-INVERTER ELECTRICAL DIAGRAM



NOTES FOR MICRO-INVERTER ELECTRICAL DIAGRAM

PV MODULE RATINGS @ STC

MODULE MAKE	
MODULE MODEL	
MAX POWER-POINT CURRENT (I_{MP})	
MAX POWER-POINT VOLTAGE (V_{MP})	
OPEN-CIRCUIT VOLTAGE (V_{OC})	
SHORT-CIRCUIT CURRENT (I_{SC})	
MAX SERIES FUSE (OCPD)	
MAXIMUM POWER (P_{MAX})	
MAX VOLTAGE (TYP $600V_{DC}$)	
VOC TEMP COEFF ($mV/^{\circ}C$ <input type="checkbox"/> or $\%/^{\circ}C$ <input type="checkbox"/>)	
IF COEFF SUPPLIED, CIRCLE UNITS	

NOTES FOR ALL DRAWINGS:

OCPD = OVERCURRENT PROTECTION DEVICE
 NATIONAL ELECTRICAL CODE® REFERENCES SHOWN AS (NEC XXX.XX)

INVERTER RATINGS

INVERTER MAKE	
INVERTER MODEL	
MAX DC VOLT RATING	
MAX POWER @ 40°C	
NOMINAL AC VOLTAGE	
MAX AC CURRENT	
MAX OCPD RATING	

SIGNS

SIGN FOR DC DISCONNECT

No sign necessary since 690.51 marking on PV module covers needed information

SIGN FOR INVERTER OCPD AND AC DISCONNECT (IF USED)

SOLAR PV SYSTEM AC POINT OF CONNECTION	
AC OUTPUT CURRENT	
NOMINAL AC VOLTAGE	
THIS PANEL FED BY MULTIPLE SOURCES (UTILITY AND SOLAR)	

NOTES FOR ARRAY CIRCUIT WIRING

- 1.) LOWEST EXPECT AMBIENT TEMPERATURE BASED ON ASHRAE MINIMUM MEAN EXTREME DRY BULB TEMPERATURE FOR ASHRAE LOCATION MOST SIMILAR TO INSTALLATION LOCATION. LOWEST EXPECTED AMBIENT TEMP ____°C
- 2.) HIGHEST CONTINUOUS AMBIENT TEMPERATURE BASED ON ASHRAE HIGHEST MONTH 2% DRY BULB TEMPERATURE FOR ASHRAE LOCATION MOST SIMILAR TO INSTALLATION LOCATION. HIGHEST CONTINUOUS TEMPERATURE ____°C
- 2.) 2009 ASHRAE FUNDAMENTALS 2% DESIGN TEMPERATURES DO NOT EXCEED 47°C IN THE UNITED STATES (PALM SPRINGS, CA IS 44.1°C). FOR LESS THAN 9 CURRENT-CARRYING CONDUCTORS IN ROOF-MOUNTED SUNLIT CONDUIT AT LEAST 0.5" ABOVE ROOF AND USING THE OUTDOOR DESIGN TEMPERATURE OF 47°C OR LESS (ALL OF UNITED STATES),
 - a) 12 AWG, 90°C CONDUCTORS ARE GENERALLY ACCEPTABLE FOR MODULES WITH I_{sc} OF 7.68 AMPS OR LESS WHEN PROTECTED BY A 12-AMP OR SMALLER FUSE.
 - b) 10 AWG, 90°C CONDUCTORS ARE GENERALLY ACCEPTABLE FOR MODULES WITH I_{sc} OF 9.6 AMPS OR LESS WHEN PROTECTED BY A 15-AMP OR SMALLER FUSE.

NOTES FOR INVERTER CIRCUITS

- 1) IF UTILITY REQUIRES A VISIBLE-BREAK SWITCH, DOES THIS SWITCH MEET THE REQUIREMENT? YES NO N/A
- 2) IF GENERATION METER REQUIRED, DOES THIS METER SOCKET MEET THE REQUIREMENT? YES NO N/A
- 3) SIZE PHOTOVOLTAIC POWER SOURCE (DC) CONDUCTORS BASED ON MAX CURRENT ON NEC 690.53 SIGN OR OCPD RATING AT DISCONNECT
- 4) SIZE INVERTER OUTPUT CIRCUIT (AC) CONDUCTORS ACCORDING TO INVERTER OCPD AMPERE RATING. (See Guide Section 9)
- 5) TOTAL OF ____ INVERTER OUTPUT CIRCUIT OCPD(S), ONE FOR EACH MICRO-INVERTER CIRCUIT. DOES TOTAL SUPPLY BREAKERS COMPLY WITH 120% BUSBAR EXCEPTION IN 690.64(B)(2)(a)? YES NO

Contractor Name, Address and Phone:	Notes for One-Line Standard Electrical Diagram for Single-Phase PV Systems			
	Site Name:			
Site Address:				
System AC Size:				
Drawn By:	SIZE	FSCM NO	DWG NO	REV
Checked By:	SCALE	NTS	Date:	SHEET