



VENDING CARTS AND MOBILE FOOD BUSINESS



Vending Cart
mobile device or pushcart

Food, beverages, balloons, flowers or news publications



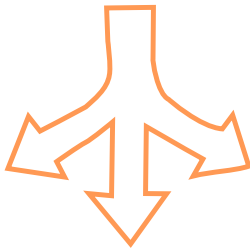
Food Truck
enclosed self-contained motorized vehicle



Food Trailer
nonmotorized vehicle pulled by motorized vehicle

Food sales only

Private Property



City Sidewalk

City Park or Plaza

In properties 2 acres or larger

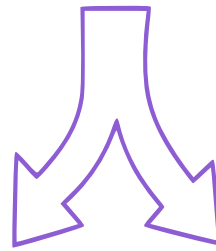
In zoning districts: CSHBD, M-1, M-2, D-1, D-2, D-3, D-4, G-MU, RP, BP, TSA, FB-UN2, FB-SC, FB-SE

In zoning districts: G-MU, OS, TSA

Within the Expanded Central Business District, Secondary Business District, Sugar House Business District, or City Parks

See the back

City Street



Private Property

In zoning districts: M-1, M-2, D-1, D-2, D-3, D-4, G-MU

In zoning districts: R-MU-35, R-MU-45, R-MU, CN, CB, CS, CC, CG, CSHBD, TC-75, M-1, M-2, D-1, D-2, D-3, D-4, G-MU, MH, RP, BP, UI, TSA

Quantity, location and design standards apply.

Verify zoning | <http://maps.slcgov.com/mws/zoning.htm> | Zoning (801)535-7700 | 451 S State St, Room 215

Business license required | Business Licensing (801)535-6644 | 451 S State St Room 225 . Room 225



VENDING CARTS ON CITY SIDEWALKS

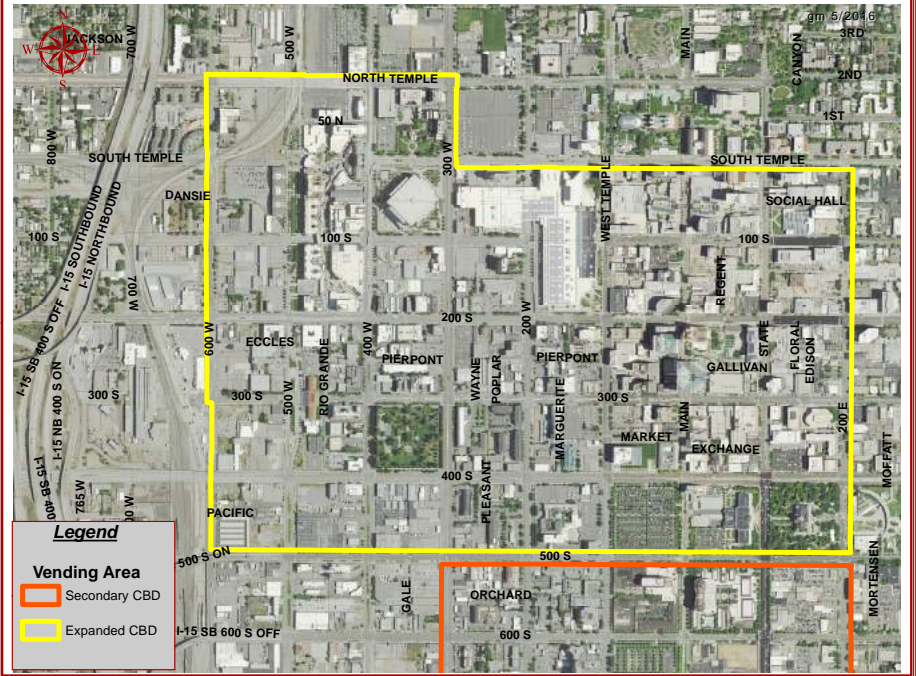
Limited to:

- 1 vending cart per each block face or 1 for each 660'
- 1 for each 330' on Main St. between South Temple and 400 South

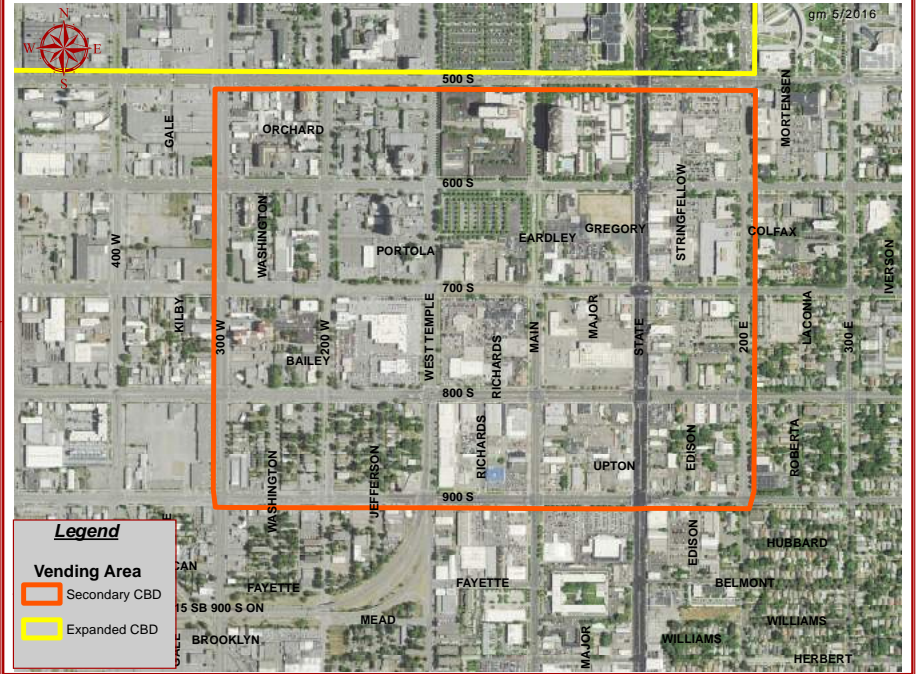
Revocable Permit required
Real Estate Services (801)
535-7133 451 S State St, Room 425

Verify standards:
www.slcdocs.com/cam/vendingpacket.pdf

Expanded CBD for Vending Cart Locations



Secondary CBD for Vending Cart Locations



SHBD for Vending Cart Locations

