

## TABLE OF CONTENTS

*Click story below to go directly to it.*[Living Traditions Festival](#)[Finch Lane Gallery: 35 x 35](#)[Finch Lane Gallery: Spring Exhibit](#)[Guest Writers Series](#)[Public Art News](#)[City Arts Grants Deadlines](#)[Call for Entries Deadline](#)[New Staff Announcements](#)[Calendar](#)

## Artists of Utah Presents the 35 x 35 Exhibition at the Finch Lane Gallery

The Artists of Utah 35 x 35 exhibit opens with an artists' reception on Friday, March 8 from 6:00 to 8:00 p.m. The exhibit closes on April 26. The 35 x 35 exhibit is a showcase of art by Utah's younger generation. From an open call to all Utah artists 35 or younger, the Artists of Utah Board of Directors selected 35 artists for the exhibition. In 2009, the exhibit opened to packed audiences at Finch Lane Gallery, and a number of the artists featured in that show have gone on to become major figures in the local art scene. Styles exhibited range from the traditional to the cutting edge, as Artists of Utah strives to present Utah with a snapshot of the best art being made by the state's younger artists.

*... continued on page 2*

## 2013 Living Traditions Festival

### A Celebration of Salt Lake's Folk and Ethnic Arts



The Salt Lake City Arts Council presents the twenty-eighth annual Living Traditions Festival on May 17, 18, and 19 at the Salt Lake City & County Building. A community celebration of Salt Lake's rich cultural diversity, the Living Traditions Festival focuses on the traditional music, dance, crafts, and food at the heart of all ethnic communities that call Salt Lake their home. The festival will open to the public on Friday, May 17, from 5:00 to 10:00 p.m. The festival continues Saturday, May 18, from noon to 10:00 p.m. and Sunday, May 19, from noon to 7:00 p.m.



The Living Traditions Festival brings people together to honor the diversity and cultural traditions of our community. Local ethnic artists – craftspeople, dancers, musicians, and chefs – provide the framework for the festival. They teach us about techniques, styles, tools, and materials used in their respective art forms, many of which are centuries old. There are many ways to experience the festival from performances to food.

At the festival's two main stages, more than 50 performances by local choirs, dance groups, and individuals of all ages and backgrounds present the traditional songs and dances of their respective communities.

*... continued on page 2*

... continued from page 1

In conjunction with the show, Artists of Utah will present a number of cash awards, including Juror's Awards, a Board of Directors' award and a People's Choice Award. Artists of Utah's online magazine, 15 Bytes, will produce a full-length documentary on the artists in the exhibit. The awards and the documentary will be presented at the Awards Reception on Friday, April 19, 6:00 to 9:00 p.m.

Founded in September of 2001, Artists of Utah is a 501(c)(3) nonprofit organization headquartered in Salt Lake City. The organization was created to serve as a communication nexus for Utah's visual arts community. The organization is made up of artists, art professionals, and art lovers and exists to bring the same together in an attempt to foster interaction, education, and imagination.

In addition to providing an online resource, including an artist directory, venue listings, and a community message board, Artists of Utah publishes 15 Bytes, Utah's Art Magazine. Published the first Wednesday of the month, the online magazine provides in-depth coverage of all aspects of Utah's art community.

In addition to regular gallery hours (M-F 9 a.m. To 5 p.m.) 35 x 35 will be open during the Salt Lake Gallery Stroll Friday, March 15 and Friday, April 19 from 6:00 to 9:00 p.m. ■



The main stages embody the diversity of cultures in Utah and bring the community together for a contemporary experience based on the heritage of past generations.

The Living Traditions food market is a delight for the senses as the twenty food booths prepare and sell traditional and delicious ethnic foods. The booths are operated by local nonprofit community groups and churches and all of the proceeds generated

by the sale of food at the festival goes back to those organizations to support their own community arts programming.

At the craft demonstration and display area, local artisans share the techniques and materials used to create their handmade crafts with the audience. These master craftspeople have acquired the skills and techniques that are passed down through generations or learned through apprenticeships.

The Living Traditions kids area provides the opportunity for youth to explore other cultures through hands-on activities. Local traditional artists teach youth the story behind the craft and show them how to create their own.

For more information on the 2013 Living Traditions Festival, contact the Salt Lake City Arts Council at 801.596.5000 or visit [www.livingtraditionsfestival.com](http://www.livingtraditionsfestival.com). ■



## VOLUNTEERS NEEDED FOR THE LIVING TRADITIONS FESTIVAL

The Living Traditions Festival operates with the help of hundreds of volunteers, assisting with various aspects of festival production. If you would like to make some new friends and get involved with a great community celebration, please sign up to volunteer for the 2013 Living Traditions Festival. Volunteers are scheduled for three-hour shifts and are needed to help with greeting the public, traffic control, grounds maintenance, soft drink sales, and setting up and taking down the festival. Interested volunteers can contact the Salt Lake City Arts Council at 801.596.5000. ■

## Guest Writers Series

The *Guest Writers Series*, co-sponsored by the Salt Lake City Arts Council and the University of Utah English Department / Creative Writing Program, continues in the spring with two readings. Readings begin at 7:00 p.m. and are free and open to the public. A lunchtime conversation is scheduled the next day at the Art Barn from noon to 1:00 p.m.

### THURSDAY, MARCH 21

Poet Brigit Pegeen Kelly &  
Prose Writer Susan Steinberg  
Finch Lane Gallery | Art Barn



**Brigit Pegeen Kelly** has published three books of poetry, *To the Place of Trumpets* (1988), selected by James Merrill for the Yale Series of Younger Poets Prize,

*Song* (1995), winner of the Lamont Poetry Prize from the Academy of American Poets, and *The Orchard* (2004), a finalist for the National Book Critics Circle Award, the *Los Angeles Times* Book Award and the Pulitzer Prize. Additional awards and honors include a "Discovery"/*The Nation* award, the Witter Bynner Prize from the American Academy and Institute of Arts and Letters, the Cecil Hemley Award from the Poetry Society of America, and numerous fellowships. In 2008, Kelly was awarded the 2008 Academy Fellowship from the Academy of American Poets. Her work has appeared in many anthologies and literary magazines, including *The Nation*, *The Yale Review*, *New England Review*, *Poetry*, among others, five Pushcart Prize volumes and six volumes of *The Best American Poetry*. Kelly, who has taught for many years primarily at the University of Illinois, has also taught at the University of California at Irvine, Purdue University, Warren Wilson College and numerous writers' conferences.

... continued on page 4

## Artists Andrea Jensen, Carol Koleman, and Chauncey Secrist Exhibit Their Work at Finch Lane Gallery

Exhibitions of mixed media paintings by Andrea Jensen, a photography installation by Carol Koleman, and mixed media paintings by Chauncey Secrist will open May 3, 2013. An artists' reception will be on Friday, May 3, from 6:00 to 8:00 p.m. and the exhibits will continue during regular gallery hours Monday through Friday, 9:00 a.m. to 5:00 p.m. as well as during monthly Gallery Stroll, May 17 from 6:00 to 9:00 p.m.



Andrea Jensen, *Expedition Build Clouds*, mixed media on canvas, 2012

Andrea Jensen's work is intricately tied to the landscape; its use, misuse and particularly the individual's sense of place within it. Her work calls attention to the way habituated human consumption and heedless lifestyles are directly implicated in environmental degradation. Her work is an invitation to observe and reconnect with our surroundings, offering a new understanding of the place in which we live. Jensen uses different materials to process, visualize, and interpret the landscape. Through the process of painting and assembling of different so-called "waste" materials, she addresses the nature of our desires and perceptions, and the resulting environmental crisis. She uses materials such as recycled billboards and plastic bags as metaphors for our consumption. The initial collection of her materials warrants an environmental intervention, resurrecting materials that would otherwise have been lost in the dead end cycle of consumption.

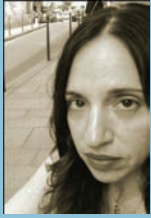
Jensen says of her work, "It is important for me as an artist to respond locally. Documentation, outreach, and public exhibition are important aspects in the development of the work and my contribution to the local community in which I live. Tending to a relationship with the environment, ultimately becomes a tending to others and can inspire potential change. This relationship with our environment is what I would like to confront through my work."

Jensen received the 1885 Society Graduate Fellowship in Fine Arts and Humanities in 2009. She has exhibited her work in New York, Colorado, California, and Utah. Jensen has been an art teacher for elementary students at Lorna Linda Elementary School in Longmont, Colorado and an instructor in drawing, painting, and design at the University of Arizona.

**Carol Koleman** describes the inspiration behind her installation. "In the year leading up to my daughters' departure for school in Rome, I began noticing that whenever I looked at a clock, it displayed repeated numbers, with 11:11 and 4:44 most often occurring. This happened so frequently that I was compelled to research a possible meaning and found that most references explained this phenomenon as a message to 'pay attention,' so I decided to do that. As to what I needed to pay attention to was not obvious, at first."

... continued on page 4

... continued from page 3



**Susan Steinberg** is the author of the story collections *Spectacle*, *Hydroplane* and *The End of Free Love*. She was the 2010 United States Artists Ziporyn Fellow in Literature.

Her stories have appeared in *McSweeney's*, *Conjunctions*, *The Gettysburg Review*, *American Short Fiction*, *Boulevard*, *Quarterly West*, *The Massachusetts Review* and other journals and magazines. She has been the recipient of a Pushcart Prize and a National Magazine Award. She has held residencies at The MacDowell Colony, the Vermont Studio Center, the Wurlitzer Foundation, the Blue Mountain Center, Ledig House, Yaddo and NYU. She earned a BFA in Painting from the Maryland Institute College of Art and an MFA in English from The University of Massachusetts, Amherst. She is Professor of English at the University of San Francisco.

## THURSDAY, APRIL 4

Poet *Harryette Mullen* &

Prose Writer *Natanya Ann Pulley*

Finch Lane Gallery | Art Barn



**Harryette Mullen** is the author of several poetry collections, including *Recyclopeda: Trimmings*, *S\*PeRM\*\*K\*T*, and *Muse & Drudge*,

winner of a PEN Beyond Margins Award. Her book *Sleeping with the Dictionary* was a finalist for a National Book Award, National Book Critics Circle Award, and *Los Angeles Times* Book Prize. Her poems have been translated into Spanish, Portuguese, French, Italian, Polish, German, Swedish, Danish, Turkish, and Bulgarian. She teaches American poetry, African American literature, and creative writing at UCLA.

... continued on page 5

... continued from page 3

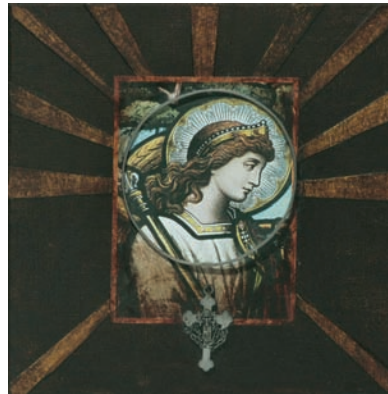
So, Koleman started taking photographs with her camera phone each time she noticed repeating numbers on the clock and then she edited them through photo applications. Slowly, over the course of a few weeks it became clear that she needed to pay attention to a poignant time with her daughters, who at 11 and 14 years old, were embarking on a journey that would never, really bring them back to her. Time became increasingly precious and the images of everyday occurrences (ear piercings, walks through the cemetery) resulted in beautiful testimonies to the passage of time.



Carol Koleman, *Isabel, Lily Lily, Rose*, digital photography

Koleman had a solo exhibit in the Finch Lane Gallery in 2005. She is the recipient of a Utah Arts Council Traveling Exhibit award and was a Ruttenberg Award finalist.

**Chauncey Secrist's** exhibit, *Reliquary*, looks at religious beliefs from the perspective on one who has never been a part of religion. Secrist says of his work, "It started as an observation of what I see as the misuse of religion for negative purposes, but grew into an attempt to understand my own beliefs and reconcile those with the dominant culture in which I live. The materials used to create these works were found in various places and various states of decay representing the diverse sources of religious ideals and their deterioration as the negative uses of religion obscure religions' positive influences. Among all factors on the religion spectrum, this causes widespread misunderstanding and increasing intolerance of alternate ideas."



Chauncey Secrist, *A Light Focused Inward Shines Brightest*, mixed media, 2012

Secrist uses mixed media construction as an expression of metamorphosis as the broken and discarded objects are reclaimed and given new meaning. Though his imagery is often dark, Secrist notes that his view of religion remains quite positive.

Secrist is a self taught artist and has exhibited at Guthrie Studios, at Art Access's 300 Plates Exhibit, and at the Springville Museum 87th Annual Spring Salon. In 2010, he received an Award of Merit from the Springville Museum 25th Annual Spiritual and Religious Art of Utah. ■

## Lifelong Learning at the Art Barn

### Portrait Drawing

Work with a live model and demystify the process of depicting a realistic likeness. Through careful observation, we'll focus on the fundamental mechanics of blocking in the head & face, using a variety of essential techniques and concepts. We'll work primarily in charcoal, as well as in pastel and pan pastel, launching on an adventure that for many is a lifetime pursuit.

May 4 - 25, Saturdays, 9:30 a.m. - 12:30 p.m.

\$125 + \$25 special fee

Instructor: Una Pett

... continued from page 4

A collection of her essays and interviews, *The Cracks Between*, is due from University of Alabama Press in 2012. Her *Tanka Diary* is forthcoming in 2013.



**Natanya Ann Pulley** is half-Navajo born to Kiyaa'aanii (Towering House Clan). Her maternal grandfather is Tachiinii (Red Running Into Water Clan). Pulley is

currently working on her PhD in Fiction Writing at the University of Utah and is co-editor of the forthcoming anthology *Good Medicine: A Collection of Native American Humor* (2013). She is the winner of the 2009 Utah Writers' Competition for her story "With Teeth," which judge Kate Bernheimer calls "a sort of reading sub-lime: as unsettling as it is shiny." Primarily a writer of fiction and non-fiction with outbreaks in poetry, Pulley has published in *Western Humanities Review*, *The Florida Review*, *Moon Milk Review*, *Drunken Boat*, *The Collagist*, *Anderbo* and *Yellow Medicine Review* among others. Her poetry will be included in the anthology *Women Write Resistance* (2013) and her story "The Last Supper" will appear in the *Last Night On Earth* anthology (2012). She shares a home in Salt Lake City, Utah, with her husband, some fish, and three rowdy dogs. ■

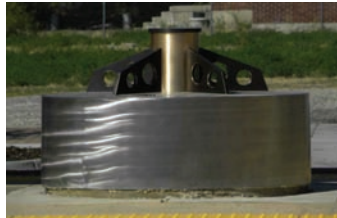
## Public Art Program

### Art in Transit – North Temple Airport Light Rail Line

Artwork at four of the six TRAX stations along the North Temple Light Rail line have been completed and installed. Set to open to the public on April 14, 2013, light rail will provide its riders with a grand entrance into downtown Salt Lake City. Each station's artwork embodies the characteristics of the neighborhoods, its residents, and businesses.

The Transfer Station and 850 West Station will be completed by the end of March. ■

Nancy Gutkin O'Neil's, *Fairpark Convergence*, brings together several different elements: the Jordan River, the Utah State Fairpark, North Temple, and a diverse community that includes people from all over the world.



Darl Thomas's *Power Station* offers seating on benches made of stainless steel, bronze, and copper. Windscreens are etched with historical photos from the archives of Rocky Mountain Power in addition to simple line drawings of transmission towers.



Shawn Porter's *Spatial Perception*, at 1950 West references the Jordan River, Riparian Zones, wetlands and wildlife existing throughout the Salt Lake Valley.



Gordon Huether's sculpture, *The Canyon*, at the Airport is passively kinetic as the vertical steel plates and their spacing combine to create a mountain range that visually opens and closes dependent on the angle of viewing.

## New Assistant Director & Warm Welcome to the Arts Council's New Staff Member



The board and the staff of the SLC Arts Council and the Department of Community and Economic Development are delighted

to announce that Kelsey Moon has been promoted to the position of Assistant Director, replacing Kimball Duffin who passed away in November, 2012.

Kelsey has served as the Arts Administrator at the Council for the past two years managing arts education grants and programs, promotions and outreach. Kelsey earned a Masters degree in Public Administration and Bachelors degree in Art History from the University of Utah and has rich experiences in working with youth arts education, administration and development. Kelsey brings passion and energy for deepening the Council's relationship with the City's arts community through the grants program and dedication to refining the organization's administrative processes and fiscal accountability.



The Council also welcomes Michelle Madsen to the staff. Michelle began work in February as the new Office Facilitator,

replacing Amanda Maestas who resigned. Michelle has worked as an Office Technician within Salt Lake City for the past four years and has great experience in bookkeeping, budget tracking, customer service and office management. ■

## Stay Informed and Get Involved through Americans for the Arts Public Art Network

Americans for the Arts Public Art Network (PAN) is the only professional network in the US dedicated to advancing public art programs and projects through advocacy, policy, and information resources to further art and design in our built environment. [www.publicartnetwork.org](http://www.publicartnetwork.org)

There are many public art opportunities throughout the country for which Utah artists can apply. The **Public Art Network Listserv** (available only to Americans for the Arts members) encourages dialogue and discussion of critical public art issues and acts as a networking tool and research engine for the field. In addition to postings by members, the listserv is the home of the PAN Weekly e-newsletter which is filled with artist opportunities, employment opportunities, project announcements, recent articles, and more. Annual memberships begin at \$50

[membership@artsusa.org](mailto:membership@artsusa.org).

To receive future public art opportunities in Salt Lake City please email [roni.thomas@slcgov.com](mailto:roni.thomas@slcgov.com). For more information on the Public Art Program call 801-596-5000 or visit the website

[http://www.slcdocs.com/arts/SLC\\_publicart/default.htm](http://www.slcdocs.com/arts/SLC_publicart/default.htm) ■

## City Arts Grants

The Salt Lake City Arts Council's City Arts Grants program supports artists, arts organizations, and other nonprofits that provide arts programming which takes place in Salt Lake City.

The guidelines for the Arts Learning, General Support, and Project Support grant categories are now available. Deadlines for submitting completed

applications are listed to the right.

Additional information about all grant categories is available by calling 801.596.5000 or online at [www.slcgov.com/arts/grants](http://www.slcgov.com/arts/grants). The

City Arts Grants program is support through an annual appropriation from Salt Lake City Corporation. ■

### DEADLINES:

#### Arts Learning:

Friday, April 12, 5:00 p.m.

#### General Support:

Friday, June 14, 5:00 p.m.

#### Project Support:

Friday, June 14, 5:00 p.m.

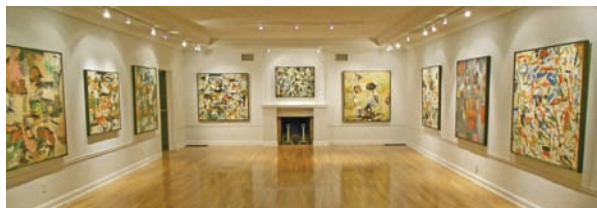
## Finch Lane Gallery Call for Entries

The Finch Lane Gallery is a contemporary gallery managed by the Salt Lake City Arts Council. Utah artists interested in presenting their newest work are encouraged to apply for an exhibition. There is no entry fee.

**Application deadline is 5:00 p.m., Monday, March 18, 2013.**

To view the full *Call for Entries* click here

[www.slcdocs.com/arts/CallForEntries2014.pdf](http://www.slcdocs.com/arts/CallForEntries2014.pdf). ■



While care has been taken to assemble accurate information on scheduled arts events, it is recommended that you contact the organizations or host locations listed to confirm dates, times and ticket prices. Compiled by Marc Vogel.

## MUSIC

### GINA BACHAUER PIANO FOUNDATION

801.297.4250  
ROSE WAGNER PERFORMING ARTS CENTER  
Douglas Humpherys .....Mar 23

### CATHEDRAL OF THE MADELEINE

801.328.8914  
Germany, the Czech  
Republic & Austria.....Feb 22 thru Mar 4  
Founders' Day Johann Sebastian Bach..Mar 10  
Good Friday CHORAL MEDITATION.....Mar 29  
Shoes for the Santo Nino.....Apr 28, 29  
Madeleine Festival Concert.....May 13

### CHAMBER MUSIC SOCIETY

801.561.3999  
LIBBY GARDNER HALL  
Elias Quartet.....Mar 21  
Bennewitz Quartet.....Apr 17  
Pastiche.....May 6  
DUMKE RECITAL HALL  
Annual Meeting.....May 14

### KINGSBURY HALL

801.581.7100 or [www.kingtix.com](http://www.kingtix.com)  
Here to Stay;  
The Gershwin Concert Experience.....Mar 2  
Lyric Opera Ensemble w/Utah Philharmonic  
Verdi's *Falstaff*.....Apr 19, 20  
*Diary of a Worm, a Spider and a Fly*..Apr 25, 27

### MUSIC ON TEMPLE SQUARE

801.240.3323 for ticketed events call 801.570.0080  
TABERNACLE  
Temple Square Choral Festival.....Mar 1, 2  
2013 Interfaith Music Tribute.....Mar 10  
The Mormon Tabernacle Choir mini-concert for  
the Family History Department.....Mar 21

### ASSEMBLY HALL

Choral Arts Society of Utah.....Mar 8  
Serenata Strings.....Mar 9  
Sounds of Music from Around the World..Mar 15  
Timpanogos Chamber Orchestra.....Mar 16  
Logan Canyon Winds.....Mar 29

### CONFERENCE CENTER THEATRE

Thirty-minute organ recitals are given in the  
Tabernacle weekdays and Saturdays at 2:00 p.m.

### NOVA CHAMBER MUSIC SERIES

801.463.5223  
LIBBY GARDNER HALL  
*Echoes of Utah*.....Mar 17  
*Resounding Impressionism*.....Apr 21

### SALT LAKE CHORAL ARTISTS

801.953.1793  
LIBBY GARDNER HALL

*Praise God and Dance*.....Mar 2  
*Bondage, Plagues, and Exodus*.....Mar 23  
*Pie Jesu*  
(Andrew Lloyd Webber's Requiem).....May 11

### SALT LAKE SYMPHONY

801.531.7501 or [www.saltlakesymphony.org](http://www.saltlakesymphony.org)  
LIBBY GARDNER HALL  
An Italian Odyssey.....Mar 16  
*Bartók!*.....Apr 20  
Verdi: A Bicentennial Celebration.....May 18

### UNIVERSITY OF UTAH

DUMKE RECITAL HALL  
Graduate String Quartet.....Apr 4  
Honors String Quartet.....Apr 9  
Flute Choir.....Apr 17  
Classical Guitar Ensemble.....Apr 18  
New Music Ensemble.....Apr 22

### LIBBY GARDNER HALL

Sundays @ 7 Spotlight:  
Daniel Neer, tenor & Paul Dorgan, piano..Mar 3  
Wind Ensemble & Symphonic Band.....Mar 5  
Women's Chorus Festival.....Mar 6  
Utah Philharmonic High School  
Invitation Concert.....Mar 7  
Jazz Combos.....Mar 28  
Percussion Ensemble.....Apr 2  
University Campus Symphony.....Apr 3  
A Cappella Choir.....Apr 8  
Jazz Big Bands.....Apr 10  
Wind Ensemble & Symphonic Band.....Apr 11  
University of Utah Women's Chorus.....Apr 13  
Electro - Acoustic Music: Crosstalk.....Apr 15  
Jazz Guitar Ensemble.....Apr 16  
University of Utah Singers.....Apr 23  
University of Utah Chamber Choir.....Apr 23  
Utah Chamber Artists: Spring Concert....May 6

### THOMPSON CHAMBER MUSIC HALL

Early Music Ensemble.....Apr 20

### UTAH CHAMBER ARTISTS

801.572.2010  
LIBBY GARDNER HALL  
Pianist Richard Marshall, Spring Concert..May 2

### UTAH SYMPHONY | UTAH OPERA

801.533.NOTE or [www.usuo.org](http://www.usuo.org)  
OPERA, CAPITOL THEATRE  
*The Magic Flute*.....Mar 16, 18, 20, 22, 24  
*The Barber of Seville*.....May 11, 13, 15, 17  
USUO invites community organizations to join next  
season's festival **Silk & Spice**, Jan 31- May 2014. USUO  
will help publicize all partners' events that are thematically-  
related to their season. Contact Paula Fowler for additional  
information: 801.869.9090 or [pfowler@usuo.org](mailto:pfowler@usuo.org)

### SYMPHONY, ABRAVANEL HALL

*Do You Hear the Peopl Sing*  
From Les Mis to Miss Saigon.....Feb 28-Mar 2  
*An American in Paris*.....Mar 8, 9  
El Salon Mexico.....Mar 30, Apr 1  
Tchaikovsky's Fifth & "Pathatique"....Apr 12, 13  
*Lamb of God*.....Mar 15, 16  
*The Magical Firebird*.....Apr 15  
Tchaikovsky's 3 Piano Concerti.....Apr 19, 20  
Mozart & Berlioz.....Apr 25, 26  
The Music of John Williams.....May 2, 3, 4

### UTOPIA EARLY MUSIC

[www.utopiaearlymusic.org](http://www.utopiaearlymusic.org)  
Harp of EIRE, Siz Centuries of  
Irish Music.....Mar 8-10  
*The Morning Trumpet*,  
American Medieval.....May 10-12

## DANCE

### BALLET WEST

801.323.6900 or [www.balletwest.org](http://www.balletwest.org)  
CAPITOL THEATRE  
*Jewels*.....Apr 5, 6, 10-13  
*Innovations 2013*.....May 17, 18, 22-25

### KINGSBURY HALL

801.581.7100 or [www.kingtix.com](http://www.kingtix.com)  
*Shut Up and Dance: Dance Fever*.....Mar 5, 6  
*Shut Up and Dance: Romeo + Juliet*....Mar 7, 8

### LoveDANCEmore

801.842.5525 or [lovedancemore.org](http://lovedancemore.org)  
SALT LAKE MASONIC TEMPLE  
*Mudson*.....Mar 18, Apr 15

### REPERTORY DANCE THEATRE

801.534.1000 or [www.rdtutah.org](http://www.rdtutah.org)  
ROSE WAGNER PERFORMING ARTS CENTER  
*Women of Valor*:  
*In the Spirit of Service*.....Apr 11-13

### RIRIE-WOODBURY DANCE COMPANY

801.297.4213 or [www.ririewoodbury.com](http://www.ririewoodbury.com)  
ROSE WAGNER PERFORMING ARTS CENTER  
*One*.....April 25, 26, 27

### UNIVERSITY OF UTAH

801.581.7100  
MARRIOTT CENTER FOR DANCE  
Performing Dance Company:  
Spring Season.....Feb 29-Mar 9  
Utah Ballet.....Mar 22, 23, 28, 29, 30  
Senior Concert I.....Apr 11-13  
Senior Concert II.....Apr 18, 19, 20  
STUDIO 115  
*Reasons to be Pretty*.....Mar 21-24

**FESTIVALS & SPECIAL EVENTS**

**SALT LAKE CITY ARTS COUNCIL**

SALT LAKE CITY & COUNTY BUILDING

Living Traditions Festival.....May 17, 18, 19

**DISCOVERY GATEWAY**

4th Annual Bumble Bee Bash Apr 12

**KRISHNA TEMPLE**

Festival of COLORS.....Apr 20

**LITERARY ARTS**

**SALT LAKE CITY ARTS COUNCIL**

ART BARN / FINCH LANE GALLERY

Guest Writers Series (Cosponsored by the U of U English Department and Creative Writing Program

Brigit Pegeen Kelly & Susan Steinberg...Mar 21

Harryette Mullen & Natanya Pulley.....Apr 4

Working Dog Reading Series

Reading.....Mar 28

Reading.....Apr 11

**ANNE NEWMAN SUTTON WEEKS POETRY SERIES**

801.832.2376

WESTMINSTER COLLEGE

Mart ín Espada.....Mar 14

Ellipsis Debut featuring Barbara Strasko...Apr 19

**THEATRE & FILM**

**ANOTHER LANGUAGE PERFORMING ARTS**

801.531.9419 or [www.anotherlanguage.org](http://www.anotherlanguage.org)

U OF U VISLAB BLACK BOX THEATRE

XYZ.....Feb 22-23, 24

**BABCOCK PERFORMING READERS**

U OF U OLPIN UNION BLDG LITTLE THEATRE

Cowboy Poetry.....Mar 21

Spring Awakening.....Apr 12-28

Life Begins on Opening Day.....Apr 18

Poetry & Prose Potluck.....May 16

**BROADWAY ACROSS AMERICA**

801.355.ARTS

CAPITOL THEATRE

Shrek the Musical.....Feb 26-Mar 3

Lord of the Dance.....Apr 2

West Side Story.....Apr 16-21

Hal Holbrook in Mark Twain Tonight.....Apr 26

Jersey Boys.....Jun 4-16

**CHILDREN'S THEATRE**

801.532.6000 or [www.tctheatre.org](http://www.tctheatre.org)

Robin Hood.....Mar 1, 2, 8, 9, 15, 16, 22, 23

The Pirates of Penzance.....Apr 19, 20, 26, 27

**GRAND THEATRE**

801.957.3322 or [www.the-grand.org](http://www.the-grand.org)

Death of a Salesman.....Mar 7-23

Evil Dead (the musical).....Mar 29, 30

Not the Messiah (Monty Python).....Apr 5, 6

**KINGSBURY HALL**

801.581.7100 or [www.kingtix.com](http://www.kingtix.com)

Joan Rivers.....Mar 9

Stuffed and Unstrung.....Apr 4

**OFF BROAD WAY THEATRE**

Doctor U.....Feb 18-Mar 16

Peter Pan and the Pirates.....Apr 5-May 11

**PIONEER THEATRE COMPANY**

[www.pioneertheatre.org](http://www.pioneertheatre.org)

Clybourne Park.....Feb 15-Mar 2

The Odd Couple.....Mar 22-Apr 6

Les Miserables.....May 3-June 1

**PLAN-B THEATRE COMPANY**

[www.planbtheatre.org](http://www.planbtheatre.org)

ROSE WAGNER PERFORMING ARTS CENTER

ERIC(A).....Feb 28-Mar 10

SUFFRAGE.....Apr 4-14

Tenth Annual SLAM.....May 4

**PYGMALION THEATRE COMPANY**

801.355.ARTS

ROSE WAGNER PERFORMING ARTS CENTER

Cheat.....Feb 21-Mar 10

A Night with the Family.....Apr 25-May 12

**SALT LAKE ACTING COMPANY**

801.363.SLAC or [www.sallakeactingcompany.org](http://www.sallakeactingcompany.org)

MARMALADE HILL CENTER

How to Make a Rope Swing.....Feb 6-Mar 3

The Exit Interview.....Apr 10-May 5

**UTAH FILM CENTER**

801.746-7000 or [www.utahfilmcenter.org](http://www.utahfilmcenter.org)

Call or check website for screenings

**SALT LAKE FILM SOCIETY**

801.321.0310 or [www.saltlakefilmsociety.org](http://www.saltlakefilmsociety.org)

Call or check website for screenings

**VISUAL ARTS**

Spring Salt Lake Gallery Strolls will take

place on Friday evenings March 15, April

19, and May 17 from 6 to 9:00 p.m.

[www.gallerystroll.org](http://www.gallerystroll.org)

**ART ACCESS**

801.328.0703 or [www.accessart.org](http://www.accessart.org)

Clay Arts of Utah, "Biomimicry"...Mar 15-Apr 12

Abstract paintings by Cal Johnson. Apr 19-May 7

**FINCH LANE GALLERY**

801.596.5000 or [www.slcgov.com/arts](http://www.slcgov.com/arts)

ART BARN

Artists of Utah / 15 Bytes 35 x 35. Mar 8-Apr 26

Andrea Jensen, Carol Koleman, and

Chauncey Secrist.....May 3-June 14

**LOGE GALLERY**

801.581.7222

PIONEER THEATRE

David Estes & Greg White.....Mar 22-Apr 6

Travis Tanner, Laura Sharp Wilson, and

Blue Critchfield.....May 3-June 1

**CHURCH HISTORY MUSEUM**

Arise & Shine Forth: International Art. Nov 16-June 17

**SALT LAKE CITY LIBRARY**

MAIN LIBRARY 801.524.8200

Bird Walk by Andy Chase.....Feb 26-Apr 5

Fine Feline Art by Shu Yamamoto...Feb 11-Apr 5

"Closing In" by Lenka Konopasek. Jan 26-Mar 8

Resurfacing by Claire Wilson.....Mar 16-Apr 26

Frackscape by Zach Pontious.....Mar 16-Apr 26

SPRAGUE BRANCH 801.594.8640

Botanical Prints & Encaustics by

Michael Peterson.....Feb 18-Apr 12

SWEET LIBRARY 801.594.8651

Ready, Aim, Shoot by Kelly O'Neill. Feb 19-Apr 1

**UTAH ARTS FESTIVAL**

801.599.2040 or [www.uaf.org](http://www.uaf.org)

Signs and Scenes with Kent Budge,

Liza Julien, and Stephanie Swift...Mar 15-Apr 12

Contemporary Artists / Traditional Techniques

with Jeff Beck, Kathleen Carricaburu,

Robert Hall and Elise LaJeunesse....Apr 19-May 10

Visual Perception / Light and Space with

Verl Adams, Donald Greco, and

Gerald Nichols.....May 17-June 7

**UTAH MUSEUM OF CONTEMPORARY ART**

801.328.4201 or [www.utahmoca.org](http://www.utahmoca.org)

Ignacio Uriarte.....Mar 1-Jun 15

**UTAH MUSEUM OF FINE ARTS**

801.581.7328 or [www.umfa.utah.edu](http://www.umfa.utah.edu)

Mike Disfarmer:

Cleburne County Portraits.....Jan 24-July 14

5 Blocks.....Sep 21-Apr 21

Dale Nichols:

Transcending Regionalism.....Sep 28-Mar 18 ■

**SALT LAKE CITY ARTS COUNCIL**



The Salt Lake City Arts Council is a division in the Salt Lake City Department of Community & Economic Development.

ART BARN | FINCH LANE GALLERY  
54 FINCH LANE, SLC, UT 84102  
Phone: 801.596.5000  
[www.slcgov.com/arts](http://www.slcgov.com/arts)

Lynn Hoffman-Brouse.....Chair  
Karen Krieger.....Executive Director  
Kelsey Moon.....Assistant Director  
Casey Jarman.....Program Director  
Roni Thomas.....Public Art Program Manager  
Michelle Madsen.....Office Facilitator

OFFICE HOURS  
Monday - Friday: 8:30 a.m. - 5:00 p.m.

GALLERY HOURS  
Monday - Friday: 9:00 a.m. - 5:00 p.m.

GALLERY STROLL HOURS  
Third Friday monthly: 6:00 - 9:00 p.m.

The Salt Lake City Arts Council affords all persons with equal access to program without regard to race, religion, sex, national origin, disability, age, or sexual orientation. Funding is provided by Salt Lake City Corporation with additional support from contributions; earned income, and grants from the Utah Division of Arts & Museums, the Zoo, Arts, and Parks Program of Salt Lake County, and the National Endowment for the Arts.