

Maplewood Addition Street Closure



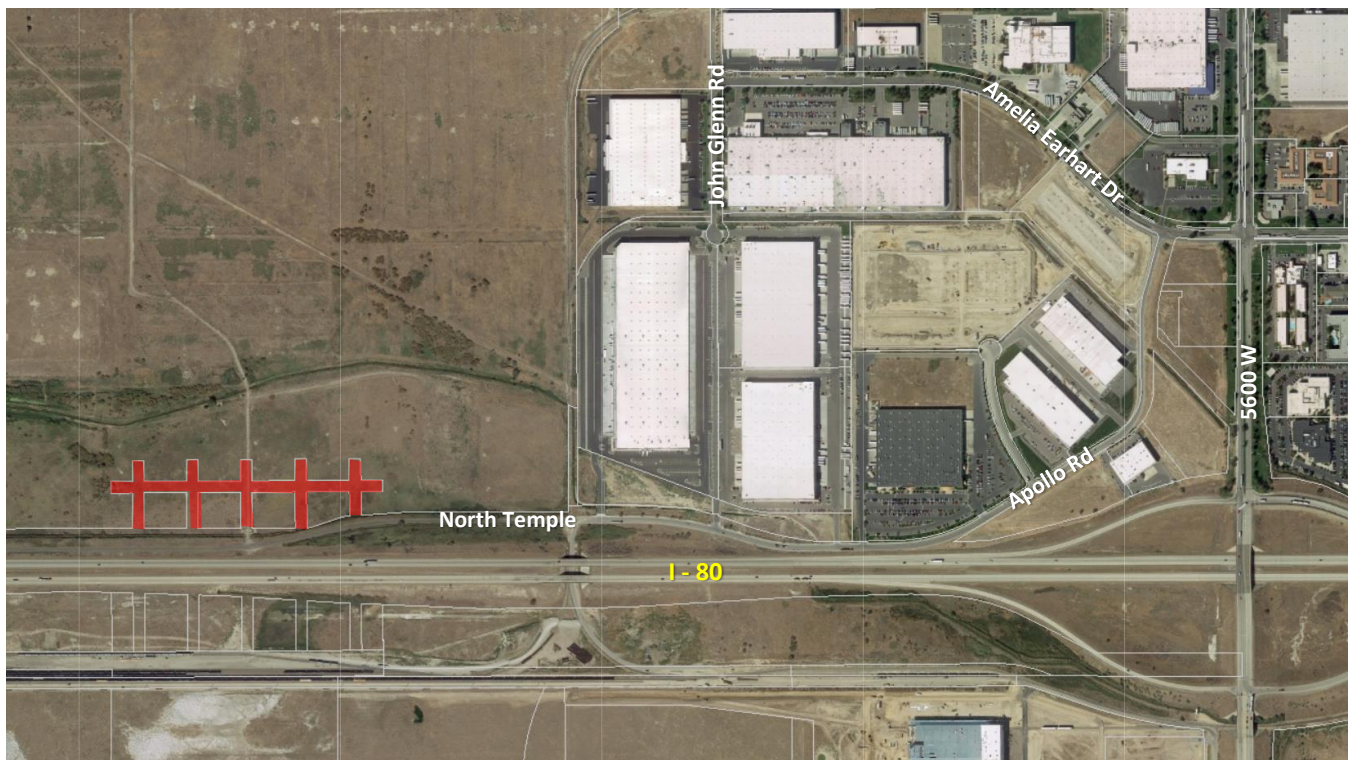
Frequently Asked Questions

What is the request?

Corbin Bennion, representing the adjacent property owner, is requesting to vacate the streets within the Maplewood Addition subdivision. The subdivision located at approximately 6780 W North Temple was platted in 1911 but never developed as intended. The applicant would like to vacate the streets to incorporate into the adjacent parcel.

Where are the platted streets located?

The streets are located at approximately 6780 W North Temple. The area is zoned M-1, Light Manufacturing.



Streets proposed to be vacated

Why is the request going through a planning process?

Although the streets were never developed, the city must review the request and hold public hearings to assess whether the disposition of the streets is in the city's best interest.

What are the next steps?

- Notices have been sent to the Jordan Meadows and Poplar Grove Community Council Chairs, and property owners and residents within 300 feet of the project to obtain public input and comments on the proposal.
- During and following this comment period, the Planning Division will evaluate the proposal against the applicable standards, taking into consideration public comments as

they relate to the standards, and develop a recommendation for the Planning Commission.

- The Planning Commission will then hold a public hearing for additional public comments and make a recommendation to City Council.
- City Council will hold another public hearing for additional public comments and make the final decision on the matter.

Where can I get more information?

The applicant has provided a packet with the plans as well as a project description. The application packet is a public record and available for download. To access this information:

1. Go to the [SLC Citizen Access Portal](#)
2. Click “Planning Check or Research Petitions”
3. Type the petition numbers PLNPCM2019-00567
4. Click on “Record Info”
5. Select “Attachments” from the drop down menu to see the submitted plans.

If you have any questions or comments regarding this proposal please contact:

Mayara Lima, Principal Planner
mayara.lima@slcgov.com
(801) 535-7118