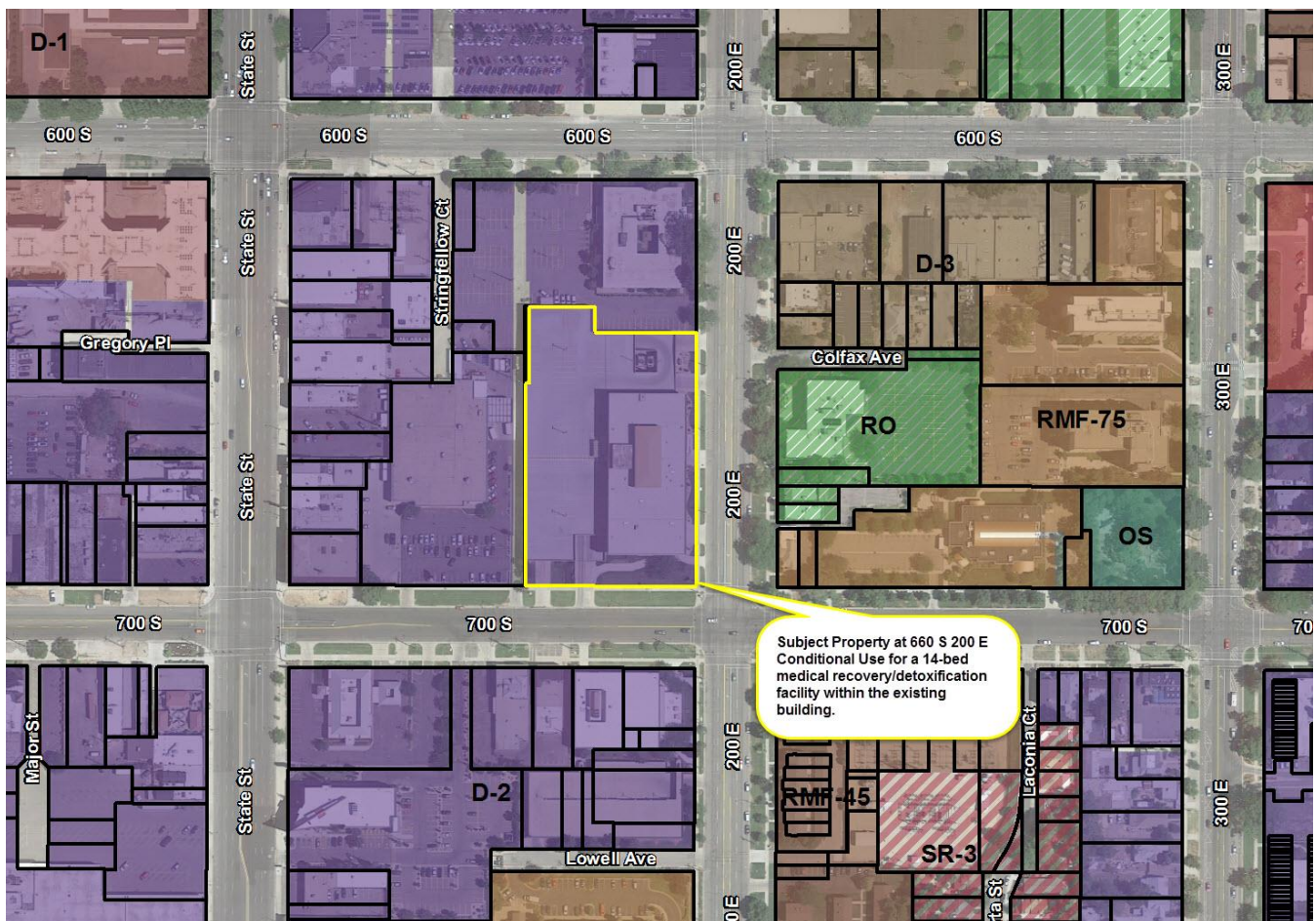


**Salt Lake City Planning Division - Public Information Sheet**  
**Conditional Use for a Medical Detoxification/Recovery Facility**  
**Sacred Circle Healthcare – 660 South 200 East**  
**PLNPCM2019-01012**



**Request Type:** Conditional Use Application  
**Location:** 660 South 200 East  
**Zone:** D-2 – Downtown Support District

**Application:** Salt Lake City has received an application from Sacred Circle Healthcare requesting Conditional Use approval for a new medical detoxification/recovery facility to be located on the first floor in the existing building at 660 South 200 East. The proposed use will consist of a 14 bed in-patient facility with 24-hour security as well as supervision, counseling and medical services provided by a multi-disciplinary team. The facility is classified as a Dwelling - Large Group Home and is allowed as a Conditional Use in the D-2 zoning district.



For additional information and questions, the Salt Lake City Planning Division staff contact is:  
David J. Gellner, Principal Planner at 801-535-6107 or [david.gellner@slcgov.com](mailto:david.gellner@slcgov.com)